

Spring Limited Editions

Handmade in the U.S.A.

Early Spring 2000

Limited Editions

51

Mary Gregory

Fenton introduces four new Cranberry pieces to the already popular Mary Gregory collection. Distinctive shading of white enamel paint is used to bring these beautiful pieces to life. The pillar vase, featuring a little girl picking apples in her grandmother's backyard, is a brand new mould for the year 2000. Our collection also features an 18" lamp, a handled basket and a "Swan Lake" bell. Talented Fenton artists created the new "First Rain" pattern that graces the delicate basket.



3281 RQ
Basket, 9 1/2"
Limit: 2350



6533 R9
Vase, Pillar, 9"
Limit: 2350

3271 RK
Bell, 6 1/2"
Limit: 2350



1509 DW
Lamp, 18"
Limit: 1250

Miniatures

Close to the hearts of many people, the Fenton miniatures continue to be one of the most sought-after collections. Our miniature collection for the new century includes a five-piece Punchbowl set and a two-piece Epergne in Empress Rose ring with Milk Glass and iridized.



6804 CF
5 Pc. Miniature Punch Bowl Set, 4"



4807 CF
2 Pc. Miniature
Epergne, 4 1/2"

Miniatures
Limited to
Sales
Through
3/31/00



6205 S9
5 Pc. Miniature Water Set, 2 3/4"

Jon Saffell designed this new tumbler mould to go with the historic McKee pitcher mould that dates back to the early 1900's. A handpainted solitary wild rose with scrolling beautifies this five-piece Pitcher and Tumbler set of iridized Milk Glass.



F E N T O N

Handcrafted Glass Artistry Since 1905

Lavender Lady & Violet

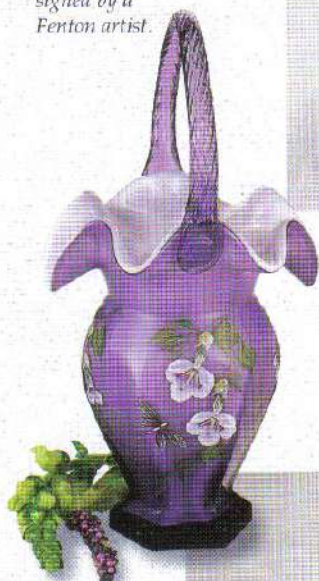
Lavender Lady on Violet Overlay

Fresh Milk Glass encased in a thin layer of Violet for a soft renewed look to our popular Violet. The creative works of Jon Saffell are demonstrated with his latest designs . . . the hand-blown student lamp shade and panel rib vase flow beautifully to grasp the newly bloomed Lavender Lady. The basket is inscribed with the signatures of Tom and Scott Fenton. Designed by Martha Reynolds, each piece is handpainted and signed by a Fenton artist.



Violet

The crisp and clear shades of Violet make for one of the most popular decorating colors for the new millennium. Created to coordinate with many of Fenton's decorative assortments, Violet comes to life when displayed in natural or warm synthetic light - and when combined with florals and prints. The square Thistle basket is from a mould acquired from The L.G. Wright Glass Company in 1999, and is new to the Fenton line in 2000.



**Family
Signature
Series Piece**
Inscribed with the
signatures of
Tom Fenton and
Scott Fenton



Lavender Petals

53



2791 ON
Lamp, 18"



3054 ON
Vase, 11"

5169 ON
Duckling, 3 1/2"



3131 ON
Basket, 8 1/2"

5162 ON
Bunny, 3"



8200 OP
Heart Trinket
Box, 7 1/2"

Violet Iridized Trinket Box

Limited to sales through
March 31st.

A large heart trinket box in a Violet iridized finish, this exquisite yet functional piece is suitable to hold heirlooms that are dear to one's heart. The hand-painted cover is designed by Kim Plauche and features an array of freshly bloomed wildflowers.

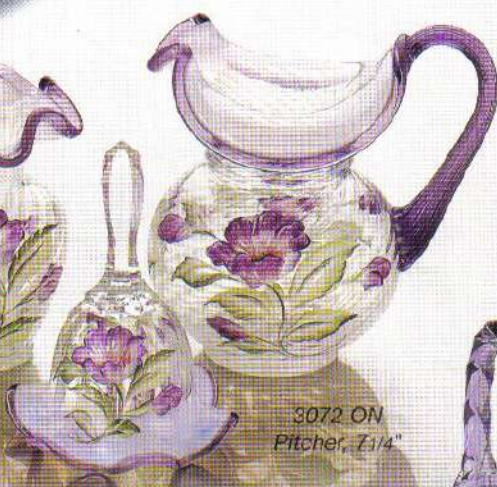
Save 3%
0815 AS

21 Pc. Lavender Lady on Violet
Overlay/ Violet/ Lavender
Petals Assortment



3050 ON
Vase, 5"

5151 ON
Bear, 3 1/2"



3072 ON
Pitcher, 7 1/4"

4694 ON
Bell, 6"



Lavender Petals

Gifted Martha Reynolds has developed an enchanting design of simple spring petals in deep lavender accented with a shimmering pink shade. The French Opalescent color features a spiral optic with a Violet ring that further enhances this beautifully handpainted design. Display it with Violet and Lavender Lady on Violet Overlay to create a layer of springtime air.



Trinket Treasures

Elegant as well as practical, these little trinket boxes come in a variety of shapes and colors.

Save 3%
0817 AS
14 Pc. Trinket
Box Assortment

6808 4K
 Flower Trinket, 4"
 (Opal)



6845 CV
 Thistle
 Trinket
 4 1/2"
 (Empress
 Rose)



6808 A9
 (Cobalt)

5786 PY
 Hummingbird
 Trinket, 4"
 (Champagne)

6845 AA
 (Aquamarine)



9486 LC
 Templebells Trinket, 5"
 (Ice Blue)



5786 3G
 (Opal)



9486 OE
 (Violet)



Queen & Princess Slippers

Charming and magical... all in one small package! Fenton slippers continue to bring great happiness to those who receive them.

0818 AS
20 Pc. Slipper Assortment

1995 LC
 (Ice Blue)



*Elle felt in
 new Simple
 miniature*

1995 CP
 (Empress Rose)

1995 KN
 (Cobalt)

1995 V1
 (Violet
 Decorated)

1995 AA
 Queen Slipper, 6"
 (Aquamarine)



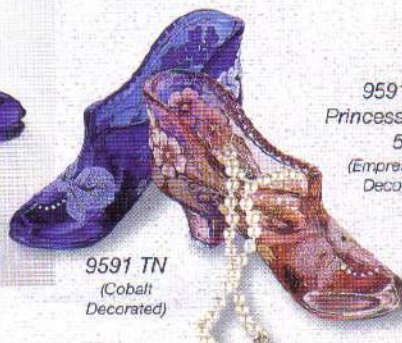
9591 QM
 (Violet)

9591 YJ
 (Aquamarine)

9591 CT
 Princess Slipper,
 5"
 (Empress Rose
 Decorated)

9591 VU
 (Ice Blue)

9591 TN
 (Cobalt
 Decorated)



All pieces on page S4 will be shipped Early Spring.

Reasures

to start your Fenton collection.
our best-selling shapes and brand-new pieces.
rent and new Fenton collectors.



5127 AA
Swan, 4"
(Aquamarine)



5127 L9
(Ice Blue)



5127 TQ
(Violet Decorated)



5127 KN
(Cobalt)

5127 PQ
(Champagne Salin)

0831 AS 12 Pc. Swan Assortment

Swan Song

A part of the Fenton family since the 1920's, these fine-feathered friends are suitable for soaps, bath beads or potpourri.

5065 AA
(Aquamarine)

5165 L9
(Ice Blue)

5065 KN
Cat, 5"
(Cobalt)

0829 AS 16 Pc. Cat Assortment

5365 KN
(Cobalt)

5365 CP
(Empress Rose)

5365 OE
(Violet)



5365 LC
Kitten, 3"
(Ice Blue)



5165 5L
Cat, 3 3/4"
(Rose Decorated)

Cat Company

Figures designed to reflect the individual personality that is associated with each cat. A "kitten" is new to this collection of expressive felines.

5151 LH
Sitting Bear, 3 1/2"
(Ice Blue Decorated)

5251 OE
Baby Bear, 3"
(Violet)



5251 AA
Baby Bear, 3"
(Aquamarine)

5151 CP
(Empress Rose)

5239 AA
Daydreaming Bear, 4"
(Aquamarine)

Bear Company

Cute, cuddly, and oh so sweet, our Bears remain a fundamental piece for any figurine collection. "Baby" Bear is the latest addition to our family of bear figurines.

0819 AS 16 Pc. Bear Assortment

5233 OE
Reclining Bear, 4"
(Violet)

5251 LC
(Ice Blue)

5251 KN
(Cobalt)



All pieces on page S5 will be shipped Late Spring.

Springtime Baskets

As fresh as the clean spring air, this assortment includes a large variety of shapes and sizes to please young and old. Traditional classic colors are used to capture the true spirit of the Easter holiday and spring season.

Save 3%
0833 AS
11 Pc. Spring Basket
Assortment

Each Fenton basket bears the personal stamp of the handler who skillfully attached the handle.



6834 LC
Basket, Wildflower,
11 1/2"
(Ice Blue)



6630 GR
Basket,
Ribbed, 8 1/2"
(Green
Opalescent)



2833 LC
Basket, Wildflower,
7" (Ice Blue)



Dave Vincent



Ron Bayles



Bob Patterson



Butch Wright



Brian Green



Terry Deuley



Bob Buchanan



Ron Farley



Tom Ingram



Apprentice Man



6832 GR
(Green Opalescent)

6832 PY
Basket, Hobnail,
4 1/4" (Champagne)

6832 OQ
(Violet)



2833 CV
Basket,
Wildflower,
7"
(Empress Rose)

6630 OQ
Basket,
Ribbed, 8 1/2"
(Violet)



F E N T O N

Handcrafted Glass Artistry Since 1905

Spring Figurines

To symbolize birth and renewal for spring, roosters, hens and bunnies in Violet, Green Pastel and Champagne Pink. Each provides the perfect balance to an Easter setting.



5292 GR
(Green)

5292 PQ
(Champagne Satin)

5275 GR
(Green)

5265 PY
(Champagne)

5275 OE
(Violet)

5265 OE
(Violet)



5292 OE
Rooster, 5 1/2"
(Violet)

5275 PY
Bunny, 2 3/4"
(Champagne)

5265 GR
Rooster, 2 3/4"
(Green)

0834 AS
21 Pc. Spring Animals
Assortment

Save 3%
0832 AS
8 Pc. Folk Art Animals
Assortment

Accent pieces that will liven any kitchen or dining area, the popular Folk Art Animals continue to strut their stuff into the next millennium. New for Spring 2000 are the small rooster box and rabbit egg cup . . . both created from moulds purchased from The L.G. Wright Company. Robin Spindler developed the unique plaid pattern that is a departure from our animals of prior years.



4683 H1
Bunny Box,
7"



5257 J1
Rooster,
8 1/2"

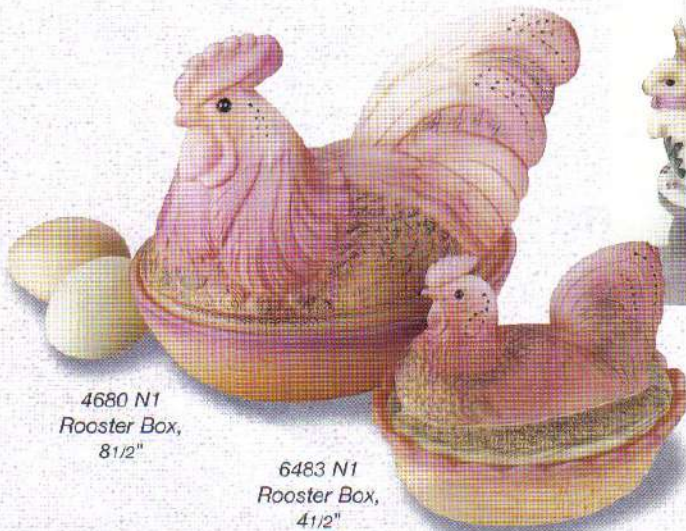
5292 J1
Rooster,
5 1/2"



6883 Q1
Rabbit Egg
Holder, 3 1/2"



5265 J1
Rooster, 2 3/4"



4680 N1
Rooster Box,
8 1/2"

6483 N1
Rooster Box,
4 1/2"

Folk Art Animals

Limited Editions

Folk Art Animals Limited to Sales Through 3/31/00

Hibiscus on Blue Burmese

Limited Editions

Back by popular demand . . . the Blue Burmese offering created quite a stir among Fenton collectors in 1999. Designer Kim Plauche captures the essence of the Blue Bird Hibiscus for this highly collectible line.

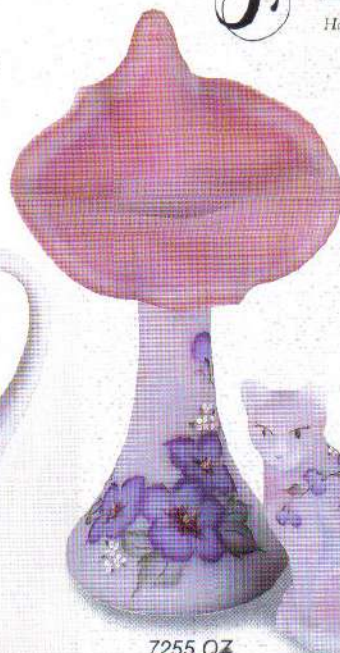
7276 QZ
Pitcher,
7 1/4"
Limit:
2750



2906 QZ
Perfume, 5 1/2"
Limit: 2750



7255 QZ
Vase, Tulip, 11"
Limit: 2750



Save 3%
0839 AS
5 Pc. Blue
Burmese
Assortment

5065 QZ
Cat, 5"
Limit: 4750



Collectible Eggs Sculpted Base Edition Limited Editions



5146 Y6
(Violet)



5146 Y3
(Gold)



5146 Y8
(Cobalt)

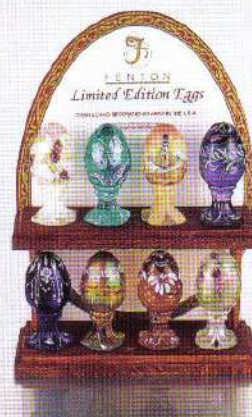


5146 Y4
(Empress
Rose)



5146 Y5
(Ivory)

5146 Y2
(French
Opalescent)



Unique and like no other, Fenton's 2000 Collectible Eggs grouping offers something for everyone. These picturesque designs provide a wide variety of handpainted illustrations . . . from a very stylized butterfly to a formation of elephants. Limited to 3000, each egg is signed by the individual artist.

9922 - Display Fixture

Each Limited to
3000 Pieces

Save 3%
0835 AS

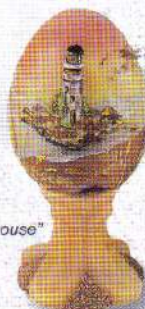
17 Pc. Collectible Egg Assortment
with Display Fixture

Save 3%
0838 AS

16 Pc. Collectible Egg
Assortment
(2 each of 8 eggs)

5146 Y7
Egg, 3 3/4"

"Portland Head Lighthouse"
(Burmese)



5146 Y1
Egg, 3 3/4"
(Aquamarine)

Photography by: Jim Osborn
Photographic Illustration
Williamstown, WV 26187

Lithography by: Richardson Printing
Maretta, OH 45750

Model: Ellie Ash
Daughter of Danny Ash and Shelley Fenton Ash
Granddaughter of Bill and Elinor Fenton

The Fenton Art Glass Company

700 Elizabeth Street, Williamstown, WV 26187

(304) 375-6122, FAX (304) 375-6459, <http://www.fentonartglass.com>