



F E N T O N

*Handcrafted American Glass Artistry*

2006





## \$284.86...and the rest of the story

Company founders Frank L. Fenton and his brother John W. Fenton pooled their money (Frank's \$280 and John's \$4.86) to start Fenton Art Glass in early May 1905 in Martins Ferry, Ohio. Even at that time, however, these funds were not really sufficient to launch the glass decorating business they envisioned. They required space and equipment, they had to hire a few employees, and they needed glass to decorate.

They had a lawyer draw up the papers for a corporate charter, and this enabled them to sell shares of stock in their new business venture. An early ledger book in our archives lists the initial stockholders. Not surprisingly, several investors—such as foundry proprietor William Mann, store owner John Seidwitz, and some other local businessmen—were familiar with various glass enterprises in the local area.

Other investors came to learn about Fenton Art Glass through the following turn of events. Young Frank L. Fenton, then 25, thought it would be prudent to have a life insurance policy, so he visited insurance agents in Bridgeport, Ohio, and nearby Wheeling, West Virginia. The policy required a medical exam, so he made an appointment with a physician in Bridgeport. The doctor found Frank to be fit, but he did recommend a prescription medication of some kind. The prescription was filled at a drug store in Bridgeport. The insurance agents (George Crook and John McFedris), the doctor (J. O. Howells) and the druggist (J. C. Dent) all bought stock in the Fenton Art Glass Company! Mr. Dent was named President of the company for a short time, and he and Dr. Howells were members of the firm's Board of Directors for many years.

Yet another local investor in the Fenton firm was Rev. F. A. Domer, who was pastor of the First Methodist Episcopal Church in Bridgeport. Frank L. Fenton sang in the choir at this church, so he must have chatted with the pastor one day and ... but that's another story!

**F E N T O N**  
Handcrafted American Glass Artistry

[www.fentonartglass.com](http://www.fentonartglass.com)

## A Century of Decorating Excellence



Frank L. Fenton

On May 4, 1905, Frank L. Fenton and his brother John combined their funds (Frank's \$280 and John's \$4.86) and deposited this sum in the Dollar Bank in Wheeling, West Virginia. The Fenton Art Glass Company was born!

Joined by brother Charles, who was also an experienced glass decorator, Frank and John rented space in the Haskins Glass Company's factory in Martins Ferry, Ohio.



John W. Fenton



Gold band tumbler, ca. 1905

They purchased glass from nearby manufacturers, and designed decorative motifs to be handpainted on the glass. Four young women—Carrie Howell, Lizzie Moore, Bertie Rhumbach, and Carrie Wood—were hired as decorators. Each of these women had done glass decorating at nearby plants, and their handpainting experience was surely an asset for the start of our company.

The initial Fenton products ranged from simple gold bands on tumblers to elaborate floral or geometric motifs on lemonade sets (tall pitchers and sets of tumblers).



The company letterhead described Fenton Art Glass as "decorators, enamellers, designers, (and) guilders of tableware, bar bottles, lemonade sets and novelties." Ledgers from 1905-06 record the firm's products, revealing that tumblers with gold bands were sold in quantity. The decorated lemonade sets had interesting names: *Harvard*, *Jewel*, *Marguerite*, *Tennyson*, *Whistler*, and *Yale*.





In early 1907, the Fenton decorating department was headed by Charles Fenton (not in picture) and by foreman Gaspar Collins (at left, wearing hat and vest). Collins was responsible for supervising the decorators and laborers in his department. Others shown in this picture are Susan Barnett, Adda Burt, Lydia Burt, Edna Collins, John Collins, and Edith Patterson. The man just visible at the extreme right is company founder John W. Fenton.

# Dear Fenton Customer:

More than a century ago, my grandfather, Frank L. Fenton, and my great uncle John Fenton were in their first year of business as glass decorators. They were creating handpainted motifs ranging from florals to geometric designs to appeal to their small but growing list of customers. Their efforts were the beginnings of the traditions of excellence in design and artistry that are now so firmly associated with Fenton glass.

As we developed our new products for 2006—the first year of our second century in business—all of us at Fenton Art Glass were especially mindful of the efforts of those who launched this enterprise in 1905. Today, as then, each article of Fenton glass reflects our pride in the craftsmanship of the designers and skilled artisans who make these products possible.

We regard the onset of our second century as both a continuation of the past and the start of the future. Our past is one of warm personal relationships and great appreciation for the value and beauty of our products. We are confident that our future will be the same.

*George W. Fenton*

George W. Fenton  
President

As the Fenton brothers were building a glass factory in Williamstown during the fall of 1906, they were certainly planning for decorating to be an integral part of their expanded business. Frank and John surely contributed design ideas, but their attentions were also focused on other segments of the business and a much larger staff of employees.

In 1906-07, our decorated glassware, such as lemonade sets, often featured elaborate floral motifs, and some of these were surely designed by Frank L. Fenton. When we began to manufacture "iridescent ware" in late 1907 and subsequently, our decorators added to the allure of this product with interesting decorations.



Banded Drape  
Pitcher, ca. 1910



Front row: Shelley Fenton Ash, Christine Fenton, Nancy Fenton, and Lynn Fenton Erb; Back row: Randy Fenton, Mike Fenton, George Fenton, Tom Fenton and Scott Fenton.



## Frank M. Fenton 1915-2005

The death of Frank M. Fenton on August 9, 2005, brought his long association with Fenton Art Glass and the city of Williamstown to a close. Born in Williamstown on December 1, 1915, he graduated from high school across the Ohio River in Marietta, Ohio, in 1932. At 6-foot 7-inches tall, Frank was a distinctive figure, although he jokingly told people he was "only five foot nineteen."

At Marietta College, Frank was a key member of the crew team which won the inaugural Dad Vail Cup in 1934. As a basketball player, he was first-string center on the Marietta team which won the Ohio Conference championship in 1936.

He came to Fenton Art Glass in June, 1936, and, after working in maintenance and the payroll office, he became Assistant General Manager in the early 1940s. Upon the death of their father in 1948, Frank and his brother Bill became company President and Vice-President, respectively. Together, they led our organization through its time of greatest growth, establishing Fenton as America's premier producer of handmade colored art glass.

Frank was an avid student of art and design, and his knowledge of glass chemistry and technology helped our company overcome many production hurdles. Away from work, he enjoyed classical music and read widely. He was active in church work and in civic affairs, particularly regarding issues in education and the arts.

He retired to the position of Historian in 1986 and greatly enjoyed working in the Fenton Museum and helping all manner of glass collectors better understand their favorite pieces. He took great pleasure in recalling the history of those Fenton items he helped develop.

We will think of him often, and his memory will be in our hearts forever.



Frank M. Fenton



Louise Piper

Public tastes for decorated glassware began to change in the 1920s, and Fenton's decorating department, then under the direction of foreman Otto Goertler, was phased out during the difficult financial times of the 1930s.

Decorated glassware began to return to fashion in the 1950s, and Frank M. Fenton and his brother Bill, who had taken control of the company after their father's death in 1948, wanted to add decorating to Fenton's product mix. After quite a search for just the right person, Frank and Bill hired Louise Piper, a decorator from Westmoreland County, PA, who had many years of experience in this field. Within a few months, Louise had hired and trained a staff of decorators and had created several new handpainted designs, including Violets in the Snow and Apple Blossom.



Debbie Lorentz Kyle, ca. 1980

During the 1980s, several Fenton decorators (most of whom had been trained by Louise) became involved in decorating design. Linda Everson created a number of handpainted decorations for the Fenton line or series pieces as well as special items for the Connoisseur Collection. Diane Johnson and Michael Dickinson also developed noteworthy designs, as did Dianna Barbour, Susan Bryan, Beverly Cumberledge, Kay Cunningham, Richard Delaney, Carol Evans, Gloria Finn, Sue Jackson, Susan Johnson, and Robin Spindler. Linda Everson, Dianna Barbour, Susan Bryan, and Diane Johnson are with our company today, and their talents and experience contribute to our tradition of decorating excellence.



Martha Reynolds

Martha Reynolds was a decoration designer at Fenton Art Glass for more than a decade until her retirement in 2001. She loved to experiment with new materials and styles, and her creations ranged from the simple and contemporary to the ornate look of Victorian glass. Martha was often honored with design awards, including the prestigious Vandenoever Award from the Society of Glass and Ceramic Decorators, and she was recognized several times by *Collector Editions* magazine.

At Fenton today, four decoration designers continue to create works of art with glass as their canvas. We value each of them: Kim Barley, Frances Burton, Robin Spindler and Stacy Williams. The challenges of handpainting on glass are many, as one must adapt to both colors and contours while striving toward a result of aesthetic appeal and artistic merit.



F E N T O N

Handcrafted American Glass Artistry

[www.fentonartglass.com](http://www.fentonartglass.com)





Frances Burton

Frances Burton loved sketching and painting with watercolors long before she began working as a Fenton decorator in 1973. She enjoys her job as a designer because it gives her the freedom to create. Frances particularly enjoys painting scenery, and she describes her style as characterized by "big floral designs ... with just one type of flower." Much of her inspiration comes from her garden. "I love to grow flowers, and I get many ideas from them," she says. "It lets me see what they look like in nature and how they change as they grow." Frances has won many awards for her creations on Fenton glass, including several Awards of Excellence from *Collector Editions* magazine.



Kim Barley

Kim Barley has flourished as an artist since joining Fenton's decorating department in 1979. Her designs have become more intricate and elaborate as she's gained experience. Kim says much of her inspiration comes from her love of water. Since becoming a designer in 1993, she has created many designs with aquatic themes. She also believes her art is heavily influenced by fashions. "Growing up, I loved to sketch. I wanted



J. K. "Robin" Spindler

to be a fashion designer and was always drawing clothes," she grins. Kim often sketches designs on glass before beginning to paint because the marker can be erased if changes are needed. Kim's work has been recognized with awards from the Society of Glass and Ceramic Decorators as well as the National Association of Limited Edition Dealers (NALED).

Robin Spindler, who is known as "J. K. Spindler" to those who collect Fenton glass, says she is the "serious one" among the four-person Fenton decoration design group. She came to Fenton in 1979 after her family encouraged her to pursue a love for art and painting. Robin's unique designs are always of the highest caliber, and she says much of her inspiration comes from nature. Robin often studies the different shapes and colors in her garden. She is amazed at the different lines and textures there. Her talent has been recognized with many awards, including a Discovery Award for Technical Excellence and, most recently, the Vandenoever Award and the Judges' Award from the Society of Glass and Ceramic Decorators. She also has Awards of Excellence from *Collector Editions* magazine and special recognition by the National Association of Limited Edition Dealers (NALED).

Stacy Williams started at Fenton as a decorator in 1993 after attending the Columbus College of Art and Design to pursue her love of painting. She became a decorating designer in 2000. Stacy likes "fun patterns" and loves to design landscapes and seascapes. Her brush deftly sweeps on broad strokes of paint but turns gentle when she creates the minute details. "Sometimes I look at a piece of glass and I just know what I want to paint," she says. "It just hits me." However, she admits she is sometimes challenged with trying to find the perfect design, and she will scour art history books for inspiration. Stacy's work has been recognized with an award from the Society of Glass and Ceramic Decorators.



Stacy Williams



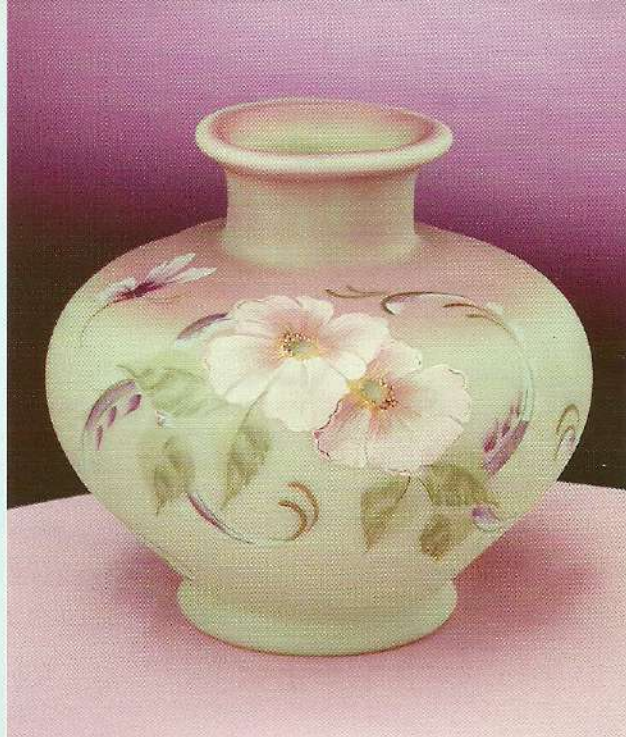
Brenda Pezzoni applies paint to a Ruby Stretch vase. Most of the paint at Fenton contains finely ground glass called frit. After the piece is fired it becomes a permanent part of the glass.



# Connoisseur Collection 2006

## Presenting the Artistry of Fenton Art Glass

From its inception in 1983, the Connoisseur Collection fulfills our commitment to creating rare and unusual glass treatments. Enjoy the first installment of our selections for 2006. More pieces will be available during the second half of the year.



## Hibiscus Garden

The soft green and warm pink of our Lotus Mist Burmese glass is the perfect complement to Robin Spindler's depiction of lush hibiscus blossoms and a stylized butterfly. Accents in 22k gold blend beautifully with Robin's sheer purples and the metallic green leaves. The mould for this vase was designed by renowned glass artist Dan Dailey.

6470 GT  
Vase, 7"  
(limit: 1950)



## Nautilus Vase In Loving Memory of Frank M. Fenton

Our classic Burmese glass captures the beauty of a magnificent seashell in this tribute to Frank M. Fenton. Stacy Williams has re-interpreted the seashell motif that Frank inspired for his much-loved Burmese selections in 1985 and 1986.

This vase will be inscribed with a Frank M. Fenton Memorial backstamp.

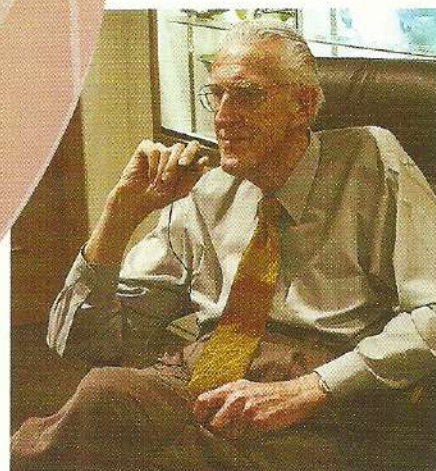


Photo courtesy of Neil Unger/FAGCA

5062 BT  
Nautilus Vase, 7½"  
(limit: 1950)

Frank M. Fenton Memorial Backstamp



F E N T O N

Handcrafted American Glass Artistry

[www.fentonartglass.com](http://www.fentonartglass.com)

Frank M. Fenton  
1915 - 2005



## Caribbean Day

Glass artisan Dave Fetty developed a special process to create this spectacular vase, capturing the essence of the sea and sky of the Caribbean. Multiple layers of crystal and powdered glass in white, blue and green are carefully combined by Dave to produce this dramatic result when the piece is blown in a paste mould to eliminate seams. No two will be exactly alike ... but all will be beautiful!



4861 DB  
Vase, 7 1/2"  
(limit: 1500)

## Mother's Love

Frances Burton has created a touching tableau of a mother giraffe overseeing her playful child. This delightful companion to the "Elephant Walk" design for 2005 adds yet another dimension to sandcarved artistry. Shimmering metallic paints complement the red gold brilliance of Marigold iridescence, bringing the African landscape to life.



7374 EU  
Pitcher, 11"  
Inscribed with the  
signatures of nine  
Fenton family members  
(limit: 1500)



8199 B6  
Vase, 7 1/2"  
(limit: 750)

## Moonstruck Bluebells

The soft touch of Aubergine Velvet frames Kim Barley's dramatic rendition of drowsy Bluebells. The rich depth and shading of the design is created by multiple layers of paint and is complemented by the elegantly arched French curl handle.

## Seasons Vase Summer & Winter

In response to many requests to complete the Seasons set in Favrene, we are offering the Summer & Winter vase. The two Seasons moulds were acquired in the 1960s. They were first made by the Verlys of America Company to replicate the appeal of fine French glass with deeply embossed designs. The Spring and Autumn vase in Favrene was offered by Fenton in 1998.



Back of  
9258 E2



Front of  
9258 E2  
Vase, 9"  
(limit: 1000)



# Carnival Glass

Fenton Art Glass launched America's first Carnival glass treatments in 1907, and they have remained a Fenton hallmark. Collectors worldwide search for our finest examples of this "iridescent ware" that first put Fenton on the map.

Once again we bring you the most popular of our signature iridescent treatments in a medley of collectible colors—Red Carnival, Amethyst Carnival and the difficult Marigold Carnival. As always, we present pieces not made previously in these Carnival colors or shapes.



6605 NA  
Lamp, Ruffled Shade, 17"

0586 AS  
12 Pc. Carnival Glass  
Assortment

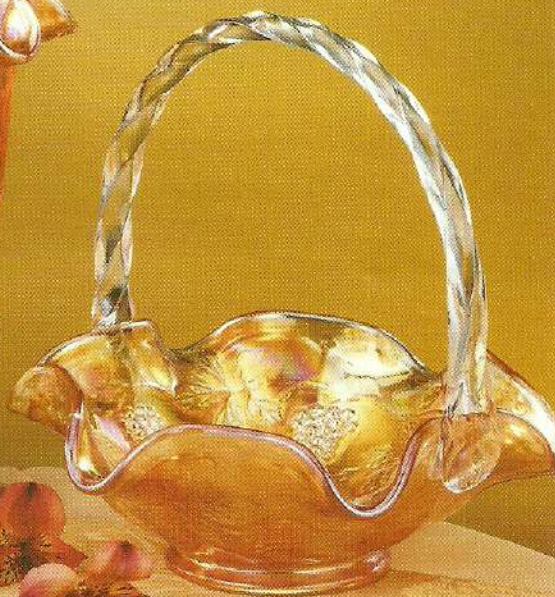
## Marigold Carnival



6817 5J  
Nappy, Grape, 6" dia.



5751 5J  
Vase,  
Paneled Grape, 8 1/2"



9832 5J  
Basket, 6"

## Amethyst Carnival

5945 NE  
Covered Box  
Daffodil, 6"



5044 NA  
Kitten, 3"



5389 NE  
Boat, 5" l.



Kitten is  
Inscribed with  
signature of Shelley Fenton



F E N T O N

Handcrafted American Glass Artistry

[www.fentonartglass.com](http://www.fentonartglass.com)





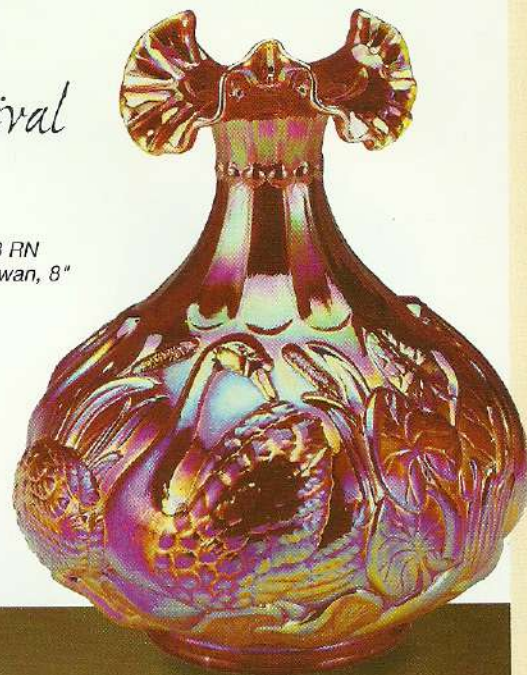
5186 RN  
Hen on nest, 5"

5266 RN  
Turtle, 4"



## Red Carnival

9458 RN  
Vase, Swan, 8"



4269 NA  
Pitcher, Medallion, 3½"



5021 NA  
Pig, 4"

## Cranberry Blossom on Amethyst Carnival

Robin Spindler's Cranberry Blossom was inspired by our medley of rich Carnival colors. Striking cranberries and field blossoms reflect the red, gold and amethyst hues highlighted in the iridescent finish.

The Decanter Set is sold with two wine goblets. Additional wine goblets are available for purchase in pairs.

4340 NE  
Decanter Set,  
Moon & Star, 12¼"  
(Includes decanter  
and two wine goblets)



4263 NE  
Wine Goblet, 4½"  
(Two Goblets included  
with Decanter Set)



# Designer Purses

What better place for life's little treasures than a stylish handbag? Our new Designer Purses are perfect for whatever memories you need to tuck away!

Each purse complements the Designer Hats offered in 2005.

**0583 AS**  
5 Pc. Designer Purse  
Assortment



6477 8U  
Purse, 3"  
"Bye-Bye Butterfly"  
Cobalt Blue  
Stacy Williams

Each Designer Purse is offered in a strictly limited edition of 2500 pieces, bears a "designed by" logo with the signature of the designer and the signature of the artist who completes it.



6477 8J  
Purse, 3"  
"Posy Parade"  
Fern Green  
CC Hardman

6477 9H  
Purse, 3"  
"Pretty in Pink"  
Rosemilk  
Kim Barley

6477 8K  
Purse, 3"  
"Wildflowers"  
Violet  
Robin Spindler



Each purse opens for use as a treasure box.



Sculptor Suzi Whitaker designed the moulds used to make these splendid additions to the Fenton line, and our quintet of "designing women" (Kim Barley, Frances Burton, CC Hardman, Robin Spindler and Stacy Williams) have created handpainted motifs to grace each selection.

6477 9A  
Purse, 3"  
"Poppy Passion"  
Autumn Gold  
Frances Burton



**F E N T O N**

Handcrafted American Glass Artistry

[www.fentonartglass.com](http://www.fentonartglass.com)



# Four Seasons Bells

Fenton celebrates nature's rhythms and the changes brought by the seasons with four delightful bells. Our design team of Kim Barley, Frances Burton, Robin Spindler and Stacy Williams chose to continue with some of their favorite "children" in this wonderful group. The vivid glass colors ... so distinctively Fenton ... are the perfect complements to our team's Mary Gregory-style decorations ... sure to please one and all!



*Spring*  
7463 FI  
Bell, 6 1/2"  
"Kitty Ride"  
Emerald Green  
(Kim Barley)



*Summer*  
7668 FX  
Bell, 6 1/2"  
"Batter Up!"  
Violet  
(Robin Spindler)



*Fall*  
7463 F3  
Bell, 6 1/2"  
"Trick or Treat"  
Ruby  
(Frances Burton)



0584 AS  
4 Pc. Four Seasons Bells  
Assortment



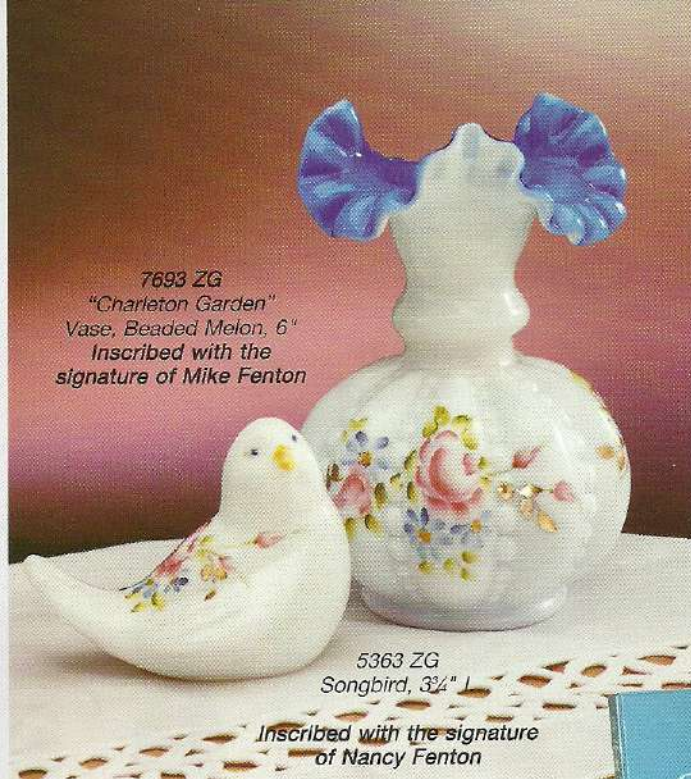
*Winter*  
7668 FR  
Bell, 6 1/2"  
"Bubba's Walk"  
Cobalt Blue  
(Stacy Williams)



# Glass Messenger

## 2006 Subscriber Exclusives

Those who enjoy the Fenton quarterly Glass Messenger will fall in love with this year's Subscriber Exclusives! Designer Frances Burton's new Charleton Garden motif on a Beaded Melon Vase and companion Songbird recalls a popular decorating style from the 1940s, replete with 22k gold accents and lavish florals. The mould for the Beaded Melon vase dates to the 1940s, and the Songbird is one of sculptor Suzi Whitaker's newest creations. Each Glass Messenger Subscriber Exclusive is individually numbered and inscribed with the signature of a Fenton family member and the artist who completes it.

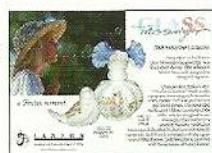


7693 ZG  
"Charleton Garden"  
Vase, Beaded Melon, 6"  
Inscribed with the  
signature of Mike Fenton

5363 ZG  
Songbird, 3 1/4" L

Inscribed with the signature  
of Nancy Fenton

FG119  
Glass Messenger Postcard  
(pack of 100)



FG208  
Subscription  
Rack Card  
(pack of 20)

FG086  
Annual Subscription  
(4 issues includes FREE  
binder with initial order)



FG170  
Glass Messenger Display  
(includes 1 current issue, 15 copies  
of a recent issue and 20 rack cards)

7374 EU  
Pitcher, 11"  
Inscribed with the  
signature of nine  
Fenton Family  
members  
(limit: 1500)



7480 QH  
Candy Box, 4 1/2"  
Inscribed with the signature  
of Lynn Fenton  
(limit: 1500)



5044 NA  
Kitten, 3"  
Inscribed with the  
signature of Shelley Fenton

4230 DT  
Basket, 9 1/2"  
Inscribed with  
the signature of  
Tom Fenton

## Family Signature Series

Since its inception in 1993, the Family Signature Series has been a favorite with Fenton collectors. As always, these pieces showcase many of the remarkable skills of our glassworkers and decorators. The color treatments and handpainted decorations surely underscore the "art" in Fenton Art Glass! Each piece is individually numbered and **limited to sales through June 15, 2006 or the stated limit for the piece.**

5980 JN  
Fairy Light, Ruffled  
5 1/2"  
Inscribed with  
the signature of  
George Fenton



F E N T O N

Handcrafted American Glass Artistry

[www.fentonartglass.com](http://www.fentonartglass.com)



*artful living*



F E N T O N

*Handcrafted American Glass Artistry*

[www.fentonartglass.com](http://www.fentonartglass.com)



# Aubergine

New for 2006, deep rich Aubergine strikes an elegant note. This warm color was inspired by fashion and then quickly embraced by home decorators. Like its complementary Marigold, it features streamlined shapes.



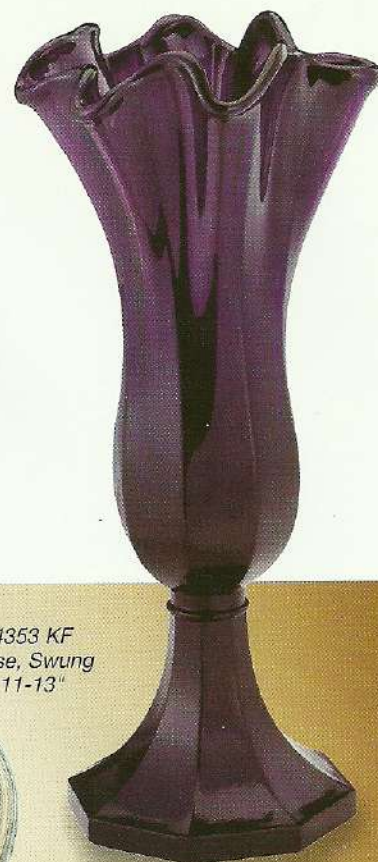
4244 JN  
Lamp, Petal  
19"



5430 JN  
Basket, Ribbed, 8"



9596 KF  
Votive, Two-way, 4 1/2"



4353 KF  
Vase, Swung  
11-13"



6667 JN  
Pitcher  
Adam's Rib, 7 1/4"



5980 JN  
Fairy Light, 5 1/2"  
Inscribed with  
the signature of  
George Fenton



5469 JN  
Vase, 7 1/2"



5074 JN  
Cat, Grooming, 4"



5987 KF  
Bowl, Ribbed  
12" dia.

## Vision on Aubergine

Stacy Williams was inspired to create a design that appears simple but captures attention with complex shading. Layer upon layer of sheer color flows fluidly through breeze-touched leaves accented by a pink Kousa pod.



F E N T O N

Handcrafted American Glass Artistry

www.fentonartglass.com



# Marigold

It just gets better and better. Our skilled craftsmen have slipped back in time to revive the mysteries of this famous iridescent treatment. The result works perfectly with the warm spice palette in today's home décor. Our Marigold grouping complements Aubergine for a dramatic display.

5163 5J  
Bird, 4" l.



4349 5J  
Vase, 6 1/2"

2753 5J  
Vase,  
Handkerchief  
10"



0586 AS  
10 Pc. Marigold and  
Golden Orchids  
Assortment



## Showcase Dealer Exclusive

A special delight for bell collectors—rare Marigold with delicate orchids. Each piece is individually numbered and limited to sales to Showcase Dealers through May 15, 2006. Part of the Family Signature Series, each bell is inscribed with the signature of Christine Fenton.

2955 JN  
Vase, 9"

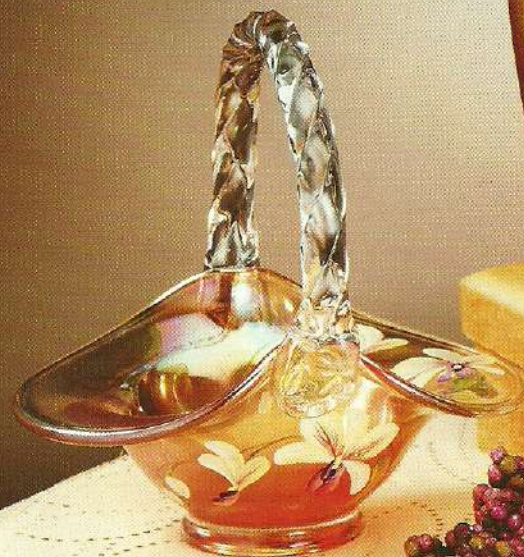


7671 NF  
Bell, 6 1/4"  
Inscribed with the  
signature of  
Christine Fenton

## Golden Orchids on Marigold

The "liquid gold" color of the glass inspired Frances Burton to design stately orchids that seem to float over the surface. The shapely selections feature clean lines to complement the simple elegance of the orchids.

8155 NF  
Vase, Square, 7 1/2"



7537 NF  
Basket, 8"



5163 NF  
Bird, 4" l.



4388 5J  
Nappy, Panel & Ball, 6" dia.



*a Fenton moment*



F E N T O N

*Handcrafted American Glass Artistry*

[www.fentonartglass.com](http://www.fentonartglass.com)

Front of  
4262 HK Vase



5063 IG  
Hippo, 3"



7150 IG  
Covered Box, 4 1/4"



5158 IG  
Elephant, 3 1/2"

## Paradise Collection



8155 IG  
Vase, Square, 7 1/2"

0592 AS  
11 Pc. Paradise  
Assortment

Back of  
4262 HK  
Vase, 8 1/2"



5439 HK  
Basket, Ribbed, 8"



5276 HK  
Goldfish, 5"



7241 HK  
Rose Bowl, 4"

Robin Spindler's love of travel inspired this scenic collection. Each element is painstakingly handpainted with delicate shading so lifelike... they beg to be touched! The lush tropical flower and foliage carry us into Robin's world of exotic beauty.



*a Fenton moment*



F E N T O N

Handcrafted American Glass Artistry

[www.fentonartglass.com](http://www.fentonartglass.com)



8133 AO  
Basket, Adam's Rib  
8½"

6656 AO  
Vase, Adam's Rib, 9"

Introducing Silken Sand, a new neutral hue destined for home décor—part of the pale gold and robin's egg blue story so popular today. Each piece in our Silken Sand group is offered both decorated and unadorned.

8103 AO  
Perfume, 6¼"

6142 AO  
Pitcher, 7"

3214 AO  
Vase, 5"

3289 AO  
Vase, 8½"

### 2006 ALS Exclusive Vase

ALS (Lou Gehrig's disease) has impacted the lives of loved ones in the extended Fenton family. Amyotrophic lateral sclerosis (ALS) is a progressive neuro-degenerative disease that attacks nerve cells and pathways in the brain and spinal cord. The ALS Association funds research into the causes of and treatments for ALS; a portion of the proceeds from the sale of each Daisy Blue on Silken Sand Vase will be donated to the ALSA. Each Vase bears the signatures of nine family members and the ALSA logo.

### Daisy Blue on Silken Sand

Frances Burton's delicate "Daisy Blue" design with melon berry accents trails across a field of pale gold Silken Sand glass, adding a simple touch of beauty to this entrancing new color.

0448 AS  
12 Pc. Silken Sand  
and Daisy Blue  
Assortment

3289 VX  
Vase, 8½"

6656 VX  
Vase, Adam's Rib, 9"  
Inscribed with the  
signatures of nine Fenton  
family members



8133 VX  
Basket, Adam's Rib, 8½"

8103 VX  
Perfume, 6¼"

3214 VX  
Vase, 5"

6142 VX  
Pitcher, 7"



# Sand Petals on Aquamarine Opalescent Stretch

Kim Barley's Sand Petals design on luxurious stretch glass plays delicate florals against the velvety opalescence of Aquamarine Opalescent glass. The effect is simply breathtaking, and these pieces will coordinate beautifully with our Silken Sand collection.

**0447 AS**

16 Pc. Aquamarine and  
Sand Petals Assortment



4244 7T  
Lamp, Petal  
19"



2077 4U  
Votive, Drapery  
Two-way, 4½"

8362 4V  
Bell, 6½"

7653 4V  
Vase, Daffodil  
7½"

5066 4S  
Hummingbird, 4½"



4332 9N  
Bowl, Paneled, 10½" dia.



**F E N T O N**

Handcrafted American Glass Artistry

[www.fentonartglass.com](http://www.fentonartglass.com)



8919 7T  
Candleplate, 7" dia.

5290 4S  
Slipper, Cat, 6" l.



8155 7T  
Vase, Square  
7 1/2"



3214 AO  
Vase, 5"

5983 7T  
Vase, Trumpet, 7"



5733 7T  
Basket, 9 1/2"



2753 9N  
Vase,  
Handkerchief, 10"



8997 4U  
Ringholder, 2 1/2"

7150 7T  
Candy Box, 4 1/2"



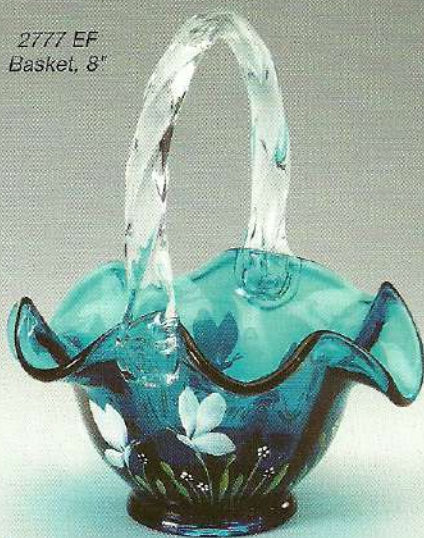
5074 7T  
Grooming Cat, 4"





# Butterfly Minuet on Turquoise

2777 EF  
Basket, 8"



0593 AS  
11 Pc.  
Turquoise and  
Butterfly Minuet  
Assortment

8155 EF  
Vase, Square, 7 1/2"



7380 EF  
Candy Box, 9 1/2"



5980 EF  
Fairy Light, 5 1/4"



5136 EF  
Elephant, 3 1/4"



5296 EF  
Butterfly, 3"



6503 EF  
Lamp, Student  
20"



Frances Burton's fluid style is displayed perfectly in the delicate Butterfly Minuet motif, where beauty and whimsy combine in a fresh design. Rich white enamel is used to create stylized butterflies in an elaborate dance on a sky of Turquoise. Nature's fragility is captured forever.

5290 QA  
Slipper, Cat  
6" l.



4694 EF  
Bell, 6"



F E N T O N

Handcrafted American Glass Artistry

[www.fentonartglass.com](http://www.fentonartglass.com)



*a Fenton moment*



F E N T O N

Handcrafted American Glass Artistry

[www.fentonartglass.com](http://www.fentonartglass.com)



# Violet

Vivid Violet, a home decorating staple, is enhanced with five new selections. The Paneled Bowl captures sparkling lights as it waits to be filled with fruit or flowers as a charming centerpiece. Our elegant Swung Vase, cheery Rooster and new Ringholder from sculptor Suzi Whitaker join our favorite jewel tone.

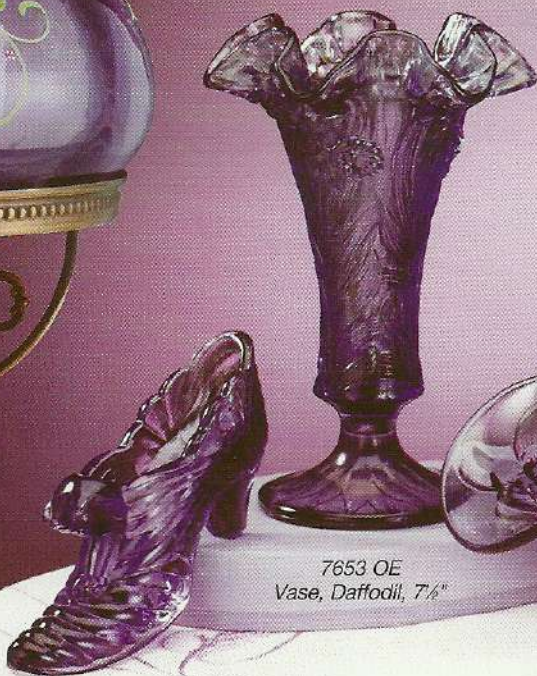
**0590 AS**  
14 Pc. Violet Assortment



4280 OE  
Candy Box, Swirl, 6½"



4390 EM  
Lamp, Student, 19"



7653 OE  
Vase, Daffodil, 7½"



5290 OE  
Slipper, Cat, 6" l.



6532 OE  
Basket, Daffodil, 8½"



8997 OE  
Ringholder, 2½"



4332 OE  
Bowl, Paneled, 10½" dia.



5084 OE  
Rooster, 3½" l.

2077 OE  
Votive, Drapery  
Two-way, 4½"



**F E N T O N**

Handcrafted American Glass Artistry  
[www.fentonartglass.com](http://www.fentonartglass.com)



5066 QQ  
Hummingbird, 4½"



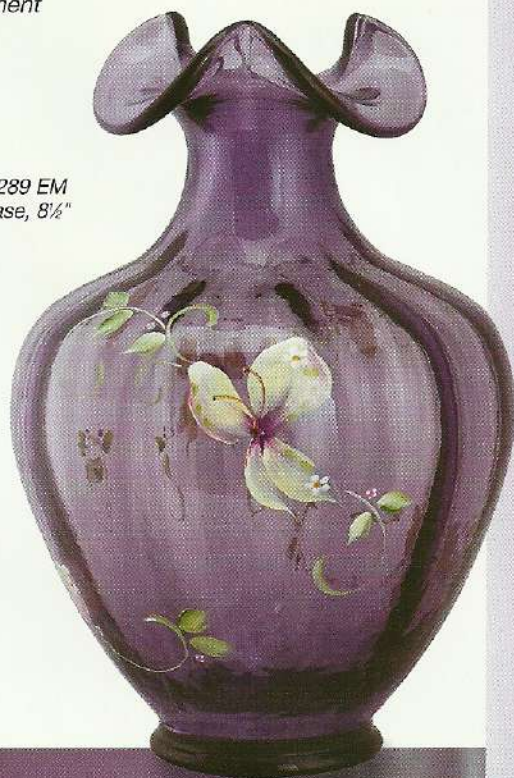
4694 EM  
Bell, 6"



7150 EM  
Candy Box, 4½"

0591 AS  
10 Pc. Butterfly Kiss  
Assortment

3289 EM  
Vase, 8½"



## Butterfly Kiss

Stacy Williams' refreshing Butterfly Kiss design enhances Violet with a breath of simplicity. Delightful when paired with Rosemilk or our new Silken Sand.



4353 OE  
Vase, Swung, 11-13"

6656 EM  
Vase, Adam's Rib  
9"



2777 EM  
Basket, 8"

5064 EM  
Sleeping Kitten, 3½" l.



5983 EM  
Vase, Trumpet  
7"





# Rosemilk



4200 BS  
Lamp, Petal, 21"



7739 BS  
Bowl, Aurora, 3 1/2"

5983 BS  
Vase, Trumpet, 7"

4633 NZ  
Basket, Paneled Grape, 6"

0595 AS  
9 Pc. Tulip Delight  
Assortment



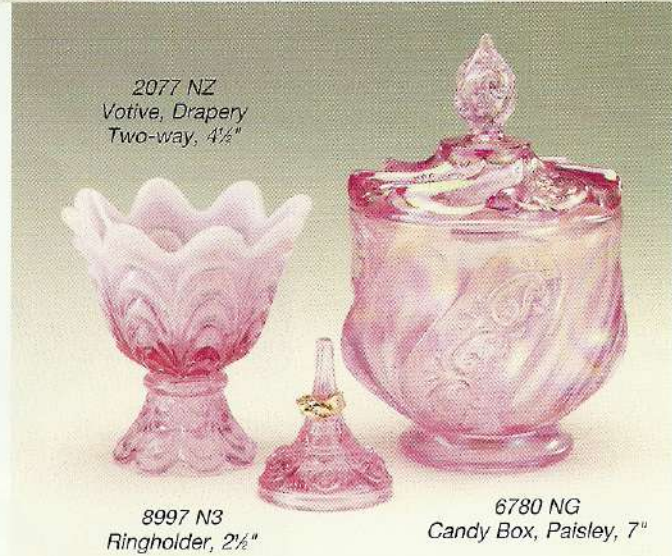
2753 BS  
Vase  
Handkerchief, 10"

1995 N3  
Slipper, 6" L.

5063 BS  
Hippo, 3"

7150 BS  
Candy Box, 4 1/4"

Dreamy Rosemilk has captured the hearts of Fenton lovers everywhere. This best selling hue is extended with five new selections that coordinate beautifully with Violet, Greens and Aubergine.



2077 NZ  
Votive, Drapery  
Two-way, 4 1/4"

8997 N3  
Ringholder, 2 1/4"

6780 NG  
Candy Box, Paisley, 7"



# Tulip Delight on Rosemilk Opalescent Stretch

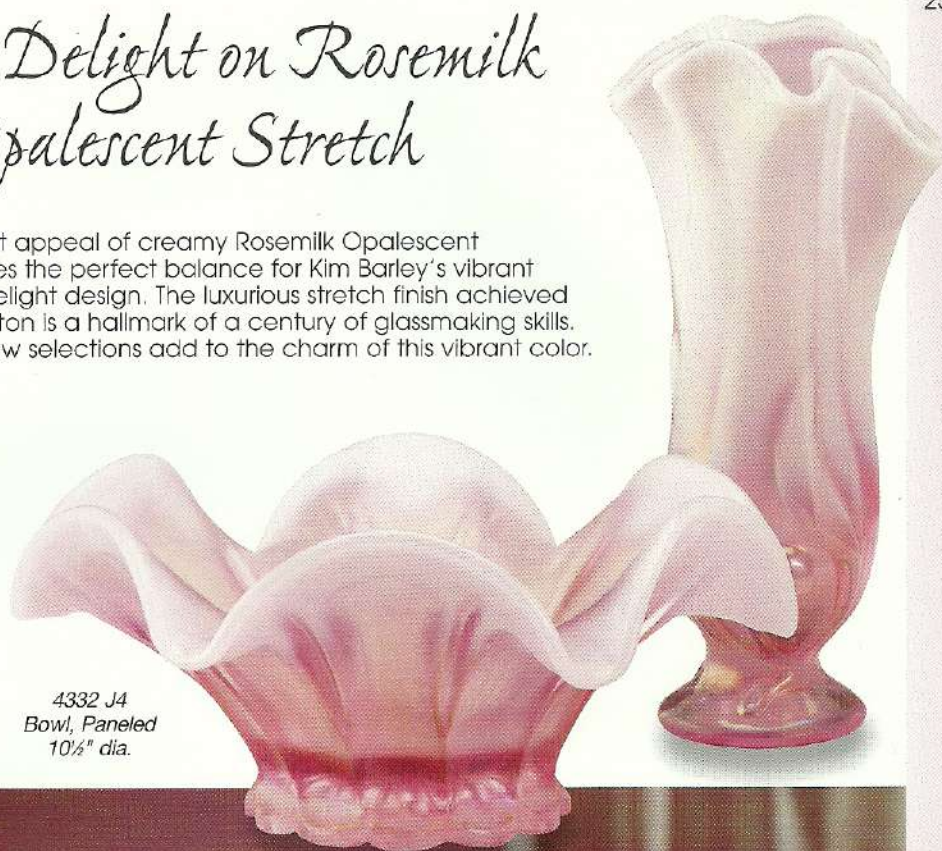
The soft appeal of creamy Rosemilk Opalescent provides the perfect balance for Kim Barley's vibrant Tulip Delight design. The luxurious stretch finish achieved by Fenton is a hallmark of a century of glassmaking skills. Five new selections add to the charm of this vibrant color.



8907 BS  
Lamp  
Petite Double-Ball  
18"

0594 AS  
11 Pc. Rosemilk  
Assortment

4332 J4  
Bowl, Paneled  
10½" dia.



2753 J4  
Vase  
Handkerchief, 10"

7689 NJ  
Vase, Cut Tulip, 8"



4694 BS  
Bell, 6"



5363 NG  
Songbird, 3¼" l.



5733 BS  
Basket, 9"



0589 AS  
12 Pc. Splendor  
in Glass  
and Daybreak on  
Fern Green  
Assortment



4262 NS  
Vase, 8½"



## Splendor in Glass

The sheer beauty of Opaline Green inspired Kim Barley's equally dreamy floral. This artistic combination of the glassblower's skill and artistic design creates a magical Splendor in Glass.

5944 NS  
Pitcher, 5½"

Kim Barley's refreshing Daybreak decoration brings a youthful breath of naivete to the trendy Fern Green. Delightful when paired with Rosemilk or Violet.



4353 ZL  
Vase, Swung  
11"-13"



2777 QW  
Basket, 8"



7087 QW  
Candy Box, 5½"



5074 QW  
Cat, Grooming, 4"



7619 QW  
Rose Bowl  
3½"

## Daybreak on Fern Green

2077 ZL  
Votive, Drapery, 4½"



7653 ZL  
Vase, Daffodil  
7½"



8997 ZL  
Ringholder, 2½"



F E N T O N

Handcrafted American Glass Artistry

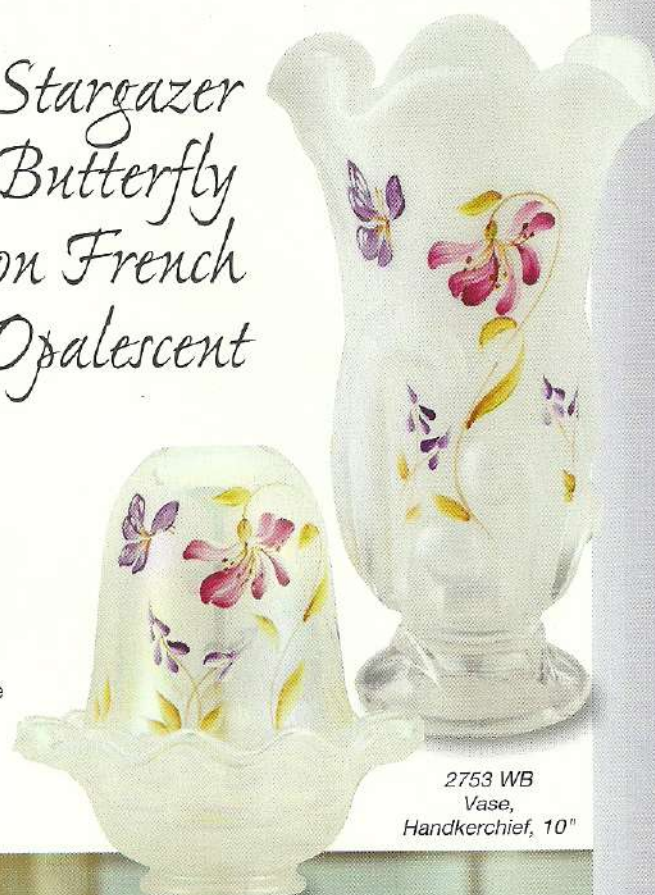
www.fentonartglass.com





## Stargazer Butterfly on French Opalescent

Five brand new selections will delight collectors of Robin Spindler's Stargazer Butterfly. Our most popular vase shape and functional candy box highlight the new grouping. The soft opalescence accented with stylized lilies coordinates perfectly with Violet and Rosemilk.



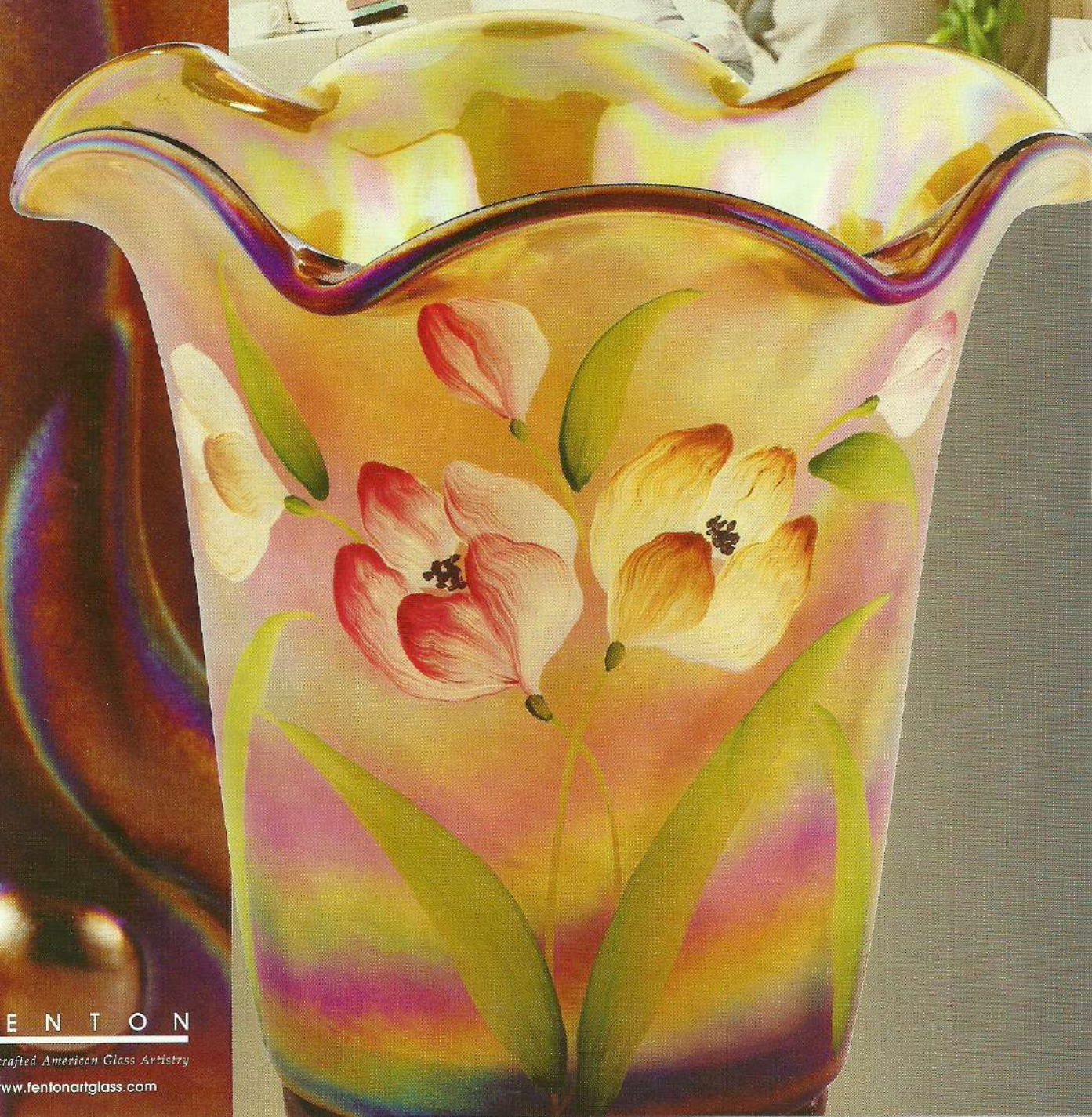
0588 AS  
13 Pc. Stargazer Butterfly  
on French Opalescent  
Assortment

5980 WB  
Fairy Light  
Ruffled, 5 1/2"





*a Fenton moment*



F E N T O N

Handcrafted American Glass Artistry

[www.fentonartglass.com](http://www.fentonartglass.com)





7107 A9  
Perfume, 7"

4775 A9  
Basket, 7"

7665 A9  
Bell, 4½"

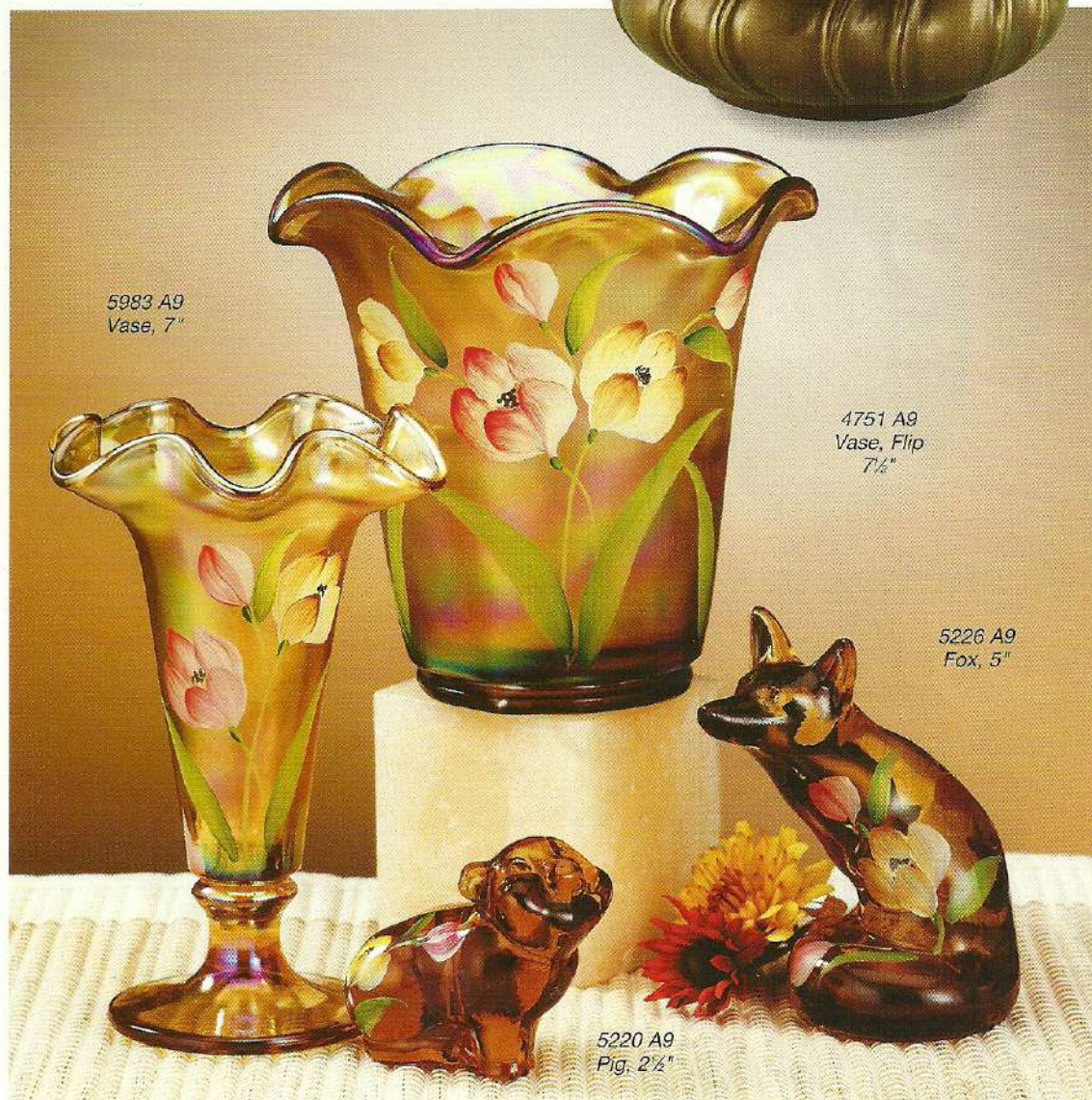


4302 A9  
Lamp, 15"

## Golden Tulips on Autumn Gold

Kim Barley captures the rich beauty of blooming tulips on a field of Autumn Gold glass in this versatile design that transcends seasons. New selections include a stylized Fox, chubby Pig and stylish 7" Flip Vase.

0596 AS  
15 Pc. Golden Tulips  
on Autumn Gold  
Assortment



5983 A9  
Vase, 7"

4751 A9  
Vase, Flip  
7½"

5226 A9  
Fox, 5"

5220 A9  
Pig, 2½"

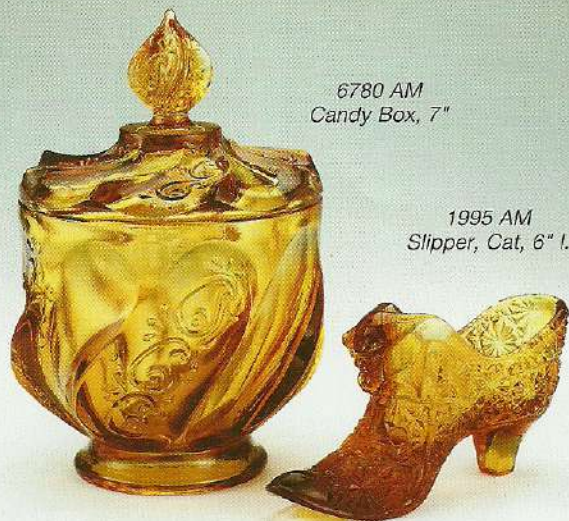


# Autumn Gold

The fiery fury of Fenton's furnaces creates a "liquid gold" that when cooled is captured forever in the honeyed shades of Autumn Gold.

6780 AM  
Candy Box, 7"

1995 AM  
Slipper, Cat, 6" l.



4353 A1  
Vase, Swung  
11"-13"



RETIRED

4552 AM  
Cakeplate, 12" dia.

5066 AM  
Hummingbird, 4½"



5987 RL  
Bowl, Ribbed, 12" dia.



F E N T O N

Handcrafted American Glass Artistry

[www.fentonartglass.com](http://www.fentonartglass.com)





7087 UR  
Box, Prism  
5½"



5088 UR  
Apple, 2½"

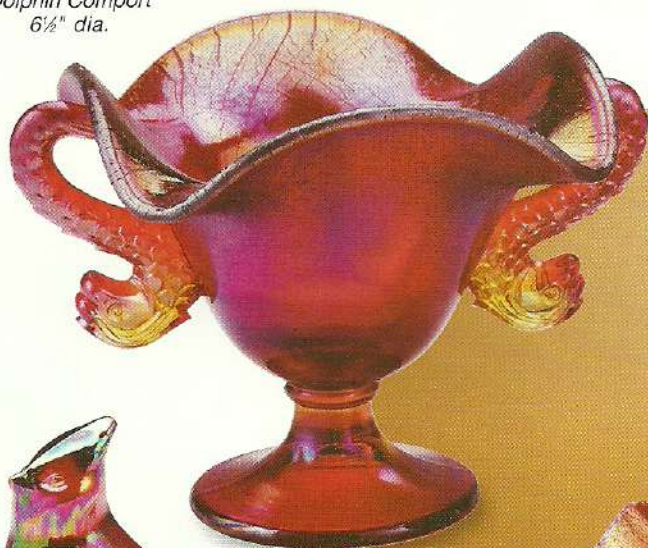


5066 UR  
Hummingbird, 4½"

## Ruby Amberina Stretch

The intense glow of Fenton's furnaces is captured forever in the shimmering iridescence and luster inherent in the magic of Ruby Amberina Stretch. First produced in the early 1920s, this glamorous art deco style continues to captivate, and red remains the statement color in home decor. Seven new items add to the drama.

4357 RL  
Dolphin Comport  
6½" dia.



5041 UR  
Cardinal, 4" l.

0597 AS  
15 Pc. Ruby Amberina Stretch  
Assortment

9596 UR  
Votive, Two-way  
4½"



2753 RL  
Vase, Handkerchief, 10"

6539 RL  
Basket, 10"

7773 RL  
Vase, Swung, Empress  
6"-7"



5074 UR  
Cat, Grooming, 4"





# Ivory Roses on Cranberry



8103 N7  
Lamp, Pillar  
19 1/2"



F E N T O N

Handcrafted American Glass Artistry

[www.fentonartglass.com](http://www.fentonartglass.com)



6307 N7  
Fairy Light, 5"

A Frances Burton classic. This timeless design of simple white roses and blue forget-me-nots remains a Fenton favorite. We have added five rich Cranberry shapes to this popular motif; a basket and vase in the Adam's Rib pattern are joined by a pitcher, a Victorian melon vase, and a petite pillar lamp.



7617 N7  
Vase, 6"

0598 AS  
8 Pc. Ivory Roses on Cranberry  
Assortment

6656 N7  
Vase,  
Adam's Rib, 9"



8133 N7  
Basket, Adam's Rib, 8 1/2"



4566 N7  
Pitcher, 6"



5355 N7  
Vase  
Beaded Melon, 8"

6546 N7  
Vase, 4 1/2"



7105 N7  
Perfume,  
Beaded Melon  
6 1/4"



# Cranberry Lamps

Classic Cranberry is made with pure gold in the formula, providing a rich depth and color that radiate warmth and beauty. Each handcrafted Fenton Cranberry lamp is individually mouth blown and requires a team or "shop" of up to 25 skilled craftsmen to complete. A Gold Ruby bud is encased in a layer of crystal which is then blown into a mould to impart a specific shape or pattern.



3304 CR  
Lamp, Hobnail  
Gone with the  
Wind, 25"



9219 CC  
Lamp, Rose  
Gone with the Wind, 23"



1808 CR  
Lamp, Daisy and Fern  
Handkerchief, 21"

5999 CR  
Lamp, Student  
20"



Fenton Cranberry  
is a traditional example of  
American craftsmanship,  
destined to be treasured  
for generations.



9218 CC  
Lamp, Rose Embossed  
Student, 20"





Cranberry glass begins with pellets of pure gold which are dissolved in a mixture of two strong acids. This liquid is thoroughly mixed with dry ingredients (sand, soda ash and lime) as the first step in making Cranberry glass.



Glassblower Mike Sine, Jr. who learned his trade at The Beaumont Company (Morgantown, West Virginia), has been employed at Fenton for 13 years. "My dad and I often worked side-by-side as members of the same shop," he recalls. "He was a good teacher, and I learned a lot from him." His father retired from Fenton Art Glass in 2003, and he sometimes helps with us with special projects and training.

## Celebrating the Glassblower

Few occupations can match the romance and beauty of the glassblower's art. Seemingly without effort, the glassblower shapes the gob of orange-red molten glass on his blowpipe before expanding it with a puff of his own breath.

At Fenton Art Glass, almost all of our blown glassware is made with cast iron moulds. However, our skilled glassblowers must shape and manipulate the molten glass on their blowpipes before using the proper mould. These operations require both patience and skill, and such qualities come only after many years of experience.

The blower must have the proper amount of glass for the piece to be made, and he must anticipate the final shape of the piece. This anticipation means distributing the molten glass on the blowpipe, creating a long shape for a tall vase or a short, slightly rounded shape for a rose bowl.



The vivid red of Fenton Cranberry is created by a thin layer of gold ruby glass encased in pure crystal (shown at right).

The "progressives" shown at left depict some of the steps in making our Cranberry glass.

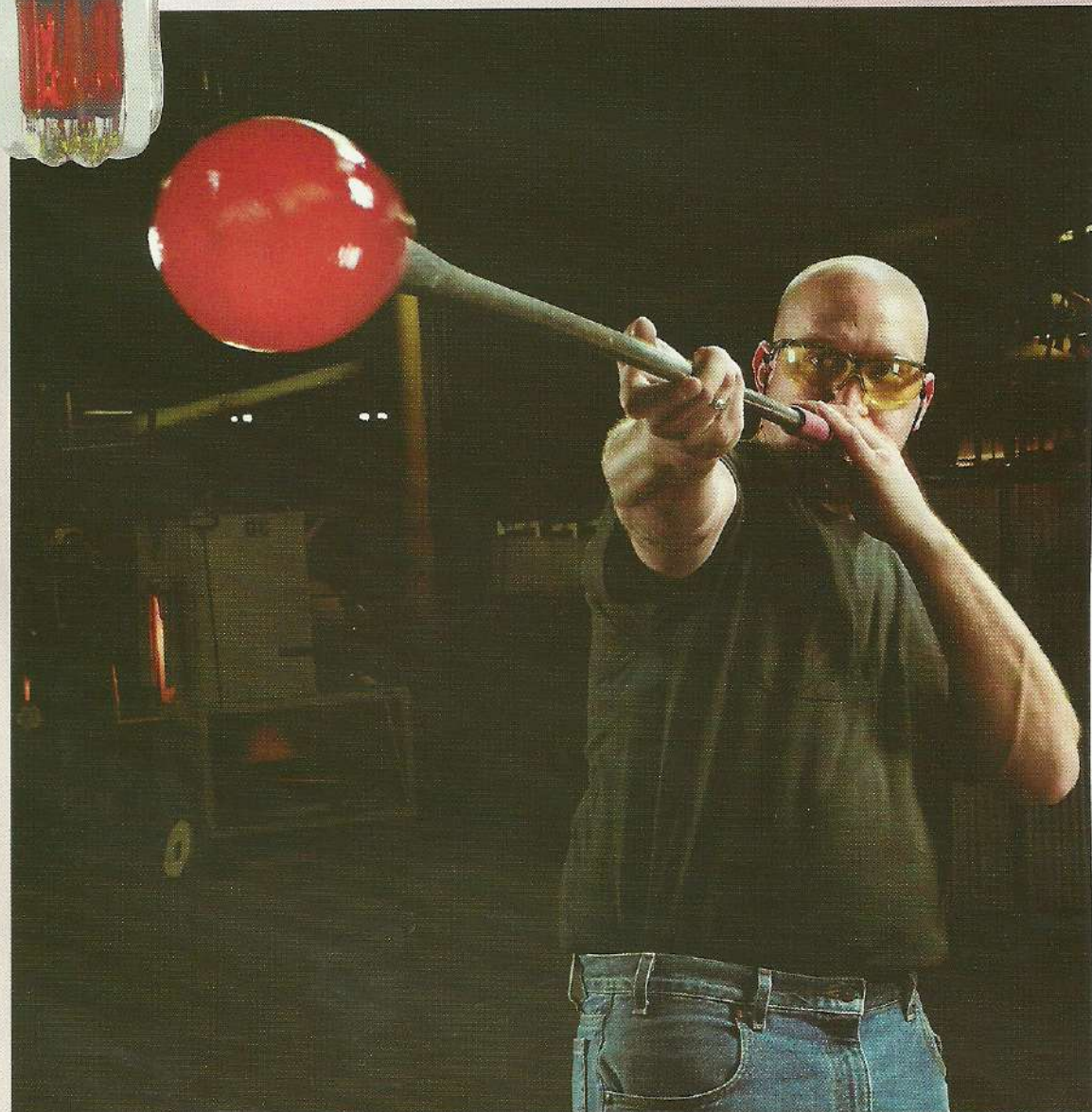
1 - A bud of gold ruby is gathered on a hollow blow pipe.

2 - It is then encased in a layer of crystal glass.

3 - It is then placed into an optic mould and blown to achieve a rib optic pattern.



As many as 24 workers can be involved in this process.



F E N T O N

Handcrafted American Glass Artistry

[www.fentonartglass.com](http://www.fentonartglass.com)



0458 AS  
15 Pc. Nature  
Company Assortment

5063 OE  
Hippo, 3"

5151 CK  
Bear, 3½"



5087 4S  
Dolphin, 4"

5363 ZL  
Songbird, 3½" l.

5136 AM  
Elephant, 3½"

## Nature Company

A delightful assortment of figurines representing land, air and sea. This colorful collection of nature's most loved animals is an ideal way to introduce a young collector to Fenton glass.



5385 XJ  
Hat, 4½"  
Kim Barley  
(Black)

5385 XF  
Hat, 4½"  
Kim Barley  
(Aquamarine)

## Hats

The designing women of Fenton show their style with fabulous new chapeaus, perfect for every season. Stacy Williams' Rose Blossom design complements the first-ever Burmese creation while Kim Barley expressed her multi-faceted personality with the sultry Tropical Tango hat and the refreshing She Sells Sea Shells Aquamarine Hat. Each handpainted hat is signed with pride by the artist who completes it and is accompanied by a custom display stand.

0446 AS  
6 Pc. Hat Assortment

5385 XZ  
Hat, 4½"  
Stacy Williams  
(Burmese)

5066 DC  
Hummingbird  
4½"

5165 DC  
Cat, 3½"

5151 DC  
Bear, 3½"

5021 DC  
Pig, 4"

5058 DC  
Elephant, Baby, 3½"

5363 DC  
Songbird, 3¾" l.

## Dewdrops

This huggable collection features a new Songbird, Pig, and a Hummingbird to add to the fun. Each figurine is handpainted with a Robin Spindler motif of a solitary daisy graced with a precious Swarovski crystal dewdrop on the leaf.

0449 AS  
12 Pc. Dewdrops  
Assortment



## Treasure Boxes

Store an assortment of life's special treasures—precious mementos and cherished memories—in a handcrafted functional Treasure Box. The handpainted Opal heart Treasure Box features the entry to a darling cottage, opening to reveal the words, "Home is where the heart is" with floral accents. A wonderful housewarming gift.



5033 HU  
Elephant Ringholder  
Box, 4"

0457 AS  
12 Pc. Treasure Box  
Assortment



8997 4U  
(Aquamarine)

8997 OE  
(Violet)

8997 ZL  
(Fern Green)

8997 N3  
Ringholder, 2½"  
(Rosemilk)

## Ringholders

A charming new design from sculptor Suzi Whitaker. Available in a rainbow of colors to complement any décor. A precious little gift.

0603 AS  
12 Pc. Ringholder  
Assortment



6877 OE  
Art Nouveau  
4"

4189 NG  
Shellflower, 4½" l.

5361 DA  
Cat Ringholder  
Box, 4½"

6606 D8  
Heart, Ribbed, 4"  
w/message:  
"Home is where the heart is"

4189 4S  
Shellflower, 4½" l.

## Baby Bunch

Perfect for the young or the young at heart, each baby animal figurine has a handpainted all-over floral motif inspired by children's pajamas. Enjoy a jaunty new Rooster as well as a new boasting Songbird designed by sculptor Suzi Whitaker.

0452 AS  
15 Pc. Baby Bunch  
Assortment



5363 6M  
Songbird, 3¾" l.



5063 U6  
Hippo, 3"



5084 U1  
Rooster, 3½" l.



5058 T1  
Elephant, Baby, 3¾"



5021 9S  
Pig, 4"



F E N T O N

Handcrafted American Glass Artistry

www.fentonartglass.com



## Bells

Appealing to the eye, pleasing to the ear, delightful to decorate with and enjoy—that's the beauty of bells. Handcrafted and handpainted with care by the artisans of Fenton.



8362 4V  
Bell, 6½"  
(Aquamarine)

7665 A9  
Bell, 4½"  
(Golden Tulips)

4694 BS  
Bell, 6"  
(Tulip Delight)

4694 EM  
Bell, Legacy, 6"  
(Butterfly Kiss)

9667 WB  
Bell, 7"  
(Stargazer  
Butterfly)

4694 EF  
Bell, 6"  
(Butterfly Minuet)

0599 AS  
12 Pc. Bells Assortment

## Slippers

Prince Charming awaits with the royal slipper! An enchanting collectible and a charming gift. Treat yourself—you deserve it!

0601 AS  
12 Pc. Slipper  
Assortment

5290 4S  
(Aquamarine)

1995 AM  
Slipper, Cat, 6" l.  
Daisy & Button  
(Autumn Gold)

9295 WB  
Slipper, Stargazer  
Butterfly, 6" l.  
(French Opalescent)

5290 QA  
(Turquoise)



5290 OE  
Slipper, Cat, 6" l.  
(Violet)

1995 N3  
(Rosemilk)

## Two-way Votives

Create a mood with our versatile two-way votives. Use as a votive, to hold a taper candle, or even as a little flower vase. Each sparkles with color from a dancing flame!

0602 AS  
12 Pc. Votives  
Assortment



2077 NZ  
(Rosemilk)

2077 4U  
Votive, Drapery  
Two-way, 4½"  
(Aquamarine)

2077 OE  
(Violet)

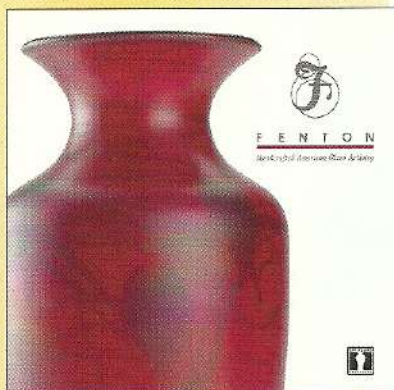
9596 UR  
(Ruby Amberina)

2077 ZL  
(Fern Green)

9596 KF  
Votive, Two-way, 4½"  
(Aubergine)



# Educational Materials and Products



FG973  
11" x 11" Coffee Table Art Book  
(hardcover with dust jacket)

**FENTON: Handcrafted American Glass Artistry**  
Fenton glass as you've never seen it! To celebrate our 100th anniversary, ten members of the Fenton family accepted the challenge to choose the very best pieces made by Fenton in its 100-year history for celebration in a spectacular coffee table book. Breathtaking full-color images of the finest examples of glass craftsmanship, artfully presented with all-new commentary.

## Glass Messenger Fenton's Quarterly Newsletter

FG170  
Glass Messenger  
Point of Purchase Display  
(Includes: 1 current issue,  
1 pack of FG208, and 15 copies  
of a recent issue)

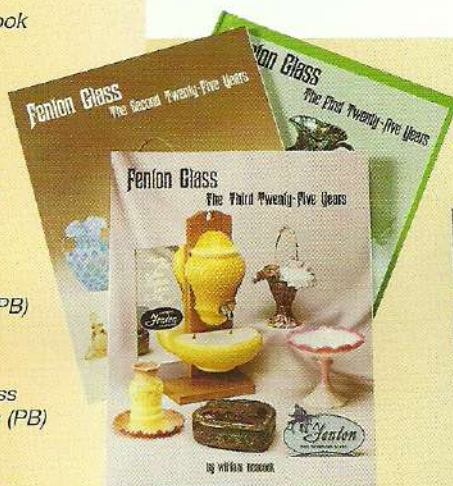


See page 10 for Glass Messenger details

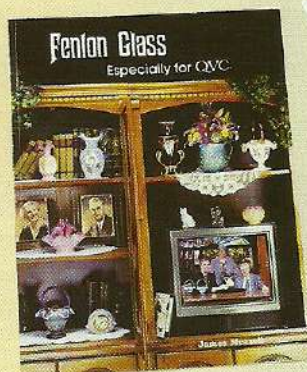
9908  
Fenton Glass  
First 25 Years (PB)

9962  
Fenton Glass  
Second 25 Years (PB)

9956  
Fenton Glass  
Third 25 Years (PB)



## History Books, Videos and DVDs



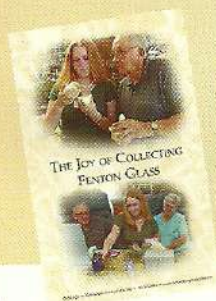
FG947 (PB)  
FG948 (HB)  
Fenton Glass Especially for QVC



FG911  
Fenton Glass  
The 1990s Decade (PB)



Fenton  
Logo T-Shirt  
FG064 - L  
FG065 - XL  
FG062 - XXL

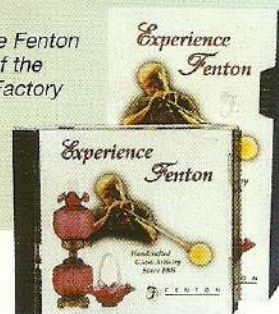


FG209  
The Joy of Collecting  
Fenton Glass VHS  
(15 minutes)



FG085  
General Postcard  
(Pack of 100)

Experience Fenton  
Tour of the  
Fenton Factory



FG141 Consumer, VHS (22 min.)  
FG146 Continuous Loop VHS (2 hr.)  
FG142 Consumer, DVD (22 min.)



FG031  
Fenton Logo Bags  
(package of 30)



9903  
Basket Handler's Sign  
(no charge)



9972  
Made in USA Sign  
(no charge)

## 2006 Fenton Catalog

FG900  
2006 Catalog  
(Retail)

FG902  
2006 Price List  
(Retail)





# Fenton Lamps

Each Fenton lamp is mouth blown by a skilled craftsman in the 100-year old Fenton factory. Decorated shades are handpainted by talented Fenton artists who proudly sign each completed piece.



19 1/2" Pillar Lamp

8103 N7  
Ivory Rose  
on Cranberry  
(pg. 32)



15" Lamp

4302 A9  
Golden Tulips  
(pg. 29)



9219 CC  
Rose  
Embossed  
(pg. 33)

23"-25"  
Gone with  
the Wind  
Lamps



3304 CR  
Hobnail, Cranberry  
Opalescent  
(pg. 33)

21"  
Handkerchief  
Lamp



1808 CR  
Daisy Fern Optic  
(pg. 34)



18" Petite  
Double-Ball Lamp

6605 NA  
Cranberry  
Blossom on  
Amethyst  
Carnival  
(pg. 6)



9218 CC  
Rose Embossed  
(pg. 33)

8907 BS  
Tulip Delight  
on Rosemilk  
(pg. 25)



4200 BS  
Tulips on  
Rosemilk  
(pg. 24)

18"-20" Student Lamps



5999 CR  
Rib Optic, Student  
(pg. 33)



6503 EF  
Butterfly Minuet  
on Turquoise  
(pg. 20)



4390 EM  
Butterfly Kiss  
on Violet  
(pg. 22)



6308 WB  
Stargazer Butterfly  
(pg. 27)

4244 7T  
Sand Petals  
on Aquamarine  
(pg. 18)



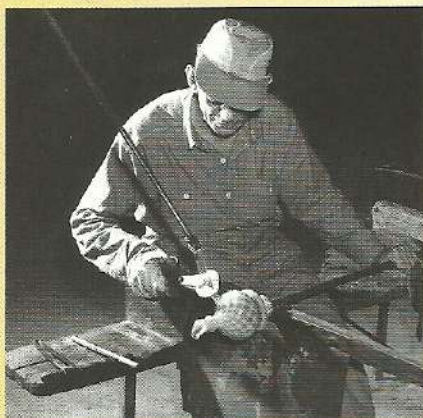
4244 JN  
Vision on  
Aubergine  
(pg. 12)



## Frank O. Myers

About 1900, glassworker Frank O. Myers got his start at a glass factory in Indiana, Pennsylvania, the very same plant where our company's founder, Frank L. Fenton, had begun as a glass decorator in 1897.

A loyal member of American Flint Glass Workers Local Union No. 71, Myers became an apprentice, first learning to gather glass and, before long, mastering pressing and blowing operations.



Frank O. Myers, ca. 1953

By about 1910, Myers was a skilled finisher, able to reshape pieces, such as flaring and crimping the tops of vases in many different ways.

He was also adept at attaching handles to cruets or pitchers, including the large water pitchers then called "jugs." From time to time, his employer marketed glass baskets, and Myers was the fellow who put the handles on the baskets.

The glass plant at Indiana, Pa., was destroyed by fire in mid-1931, leaving many without jobs. Myers came to work at Fenton on February 1, 1932, transferring his union card to Local Union No. 22 of the AFGWU, which enrolled Fenton's skilled glassworkers.

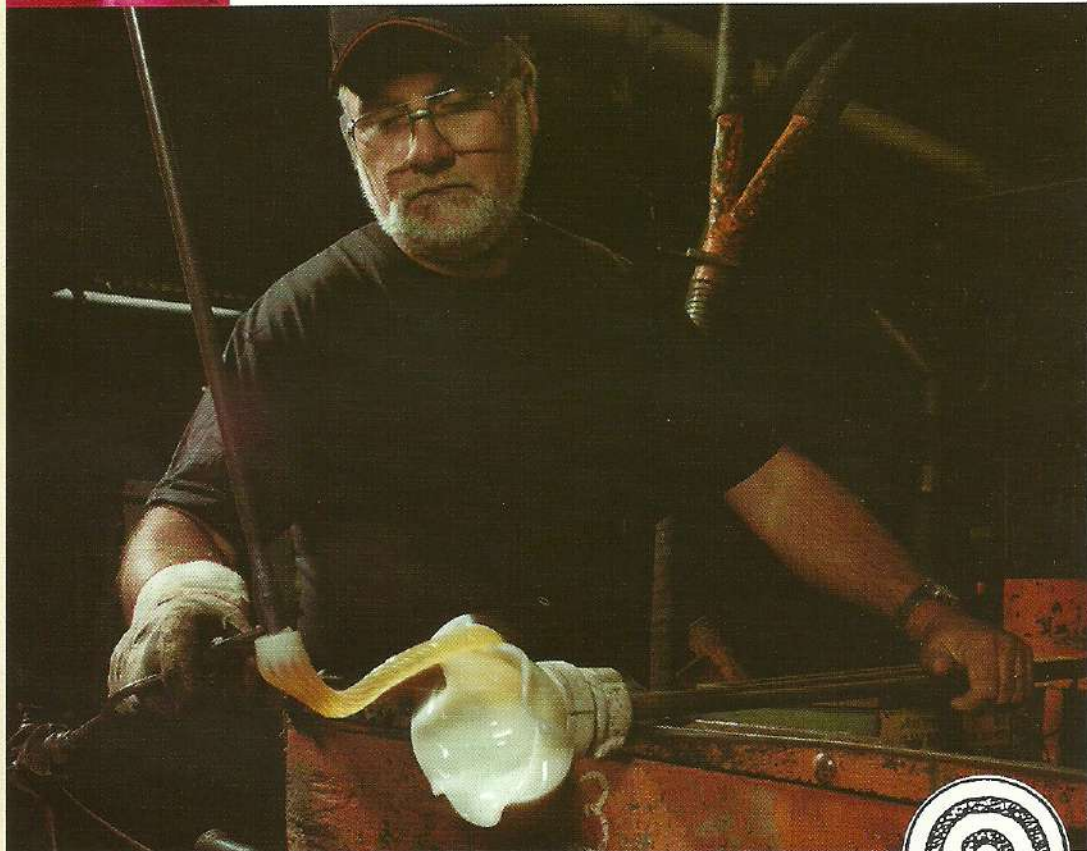
When Fenton decided to create baskets about 1939, Myers became our first basket handler. "He was very good at that job," Frank M. Fenton recalled. "And, he was very helpful in training other skilled glassworkers to become handlers. That was important to us in the early 1940s when several different baskets were in our line."

## Celebrating the Handler



The skilled basket handler has a scant twenty-five seconds within which he must accomplish his tasks: attach a glowing ribbon of molten glass to one side of the basket; deftly twist the rapidly cooling glass; stick it to the other side; impress the base of each side of the handle with his handler's mark; and, finally, fashion the handle into a graceful arch.

In the 1950s, company President Frank M. Fenton and his brother Bill Fenton, who was Vice-President, decided that each Fenton basket handler ought to have a distinctive mark so that collectors could identify the artisan who had created their basket.



These marks, impressed at the base of each side of the handle, also help ensure a good bond between the handle and the basket. Each handler's mark is essentially circular in shape, but the designs within that circle are quite varied. Butch Wright's mark looks like a target with bullseye.

Handler Butch Wright just marked his 31-year anniversary as a Fenton employee. His sharp eyes, steady hands and experience with many different baskets make him a valuable member of our workforce. Perhaps you have one of his baskets!



Working closely with each basket handler during production at Fenton is a glassworker called a "handle gatherer." This worker uses a four- or five-foot long steel rod called a punty to gather just the right amount of glass for a handle. Naturally, he needs to know whether the basket is a large one ... or one of our mini-baskets ... or just in between!

"I do a lot of looking over my shoulder as I reheat the glass," one handle gatherer remarked. "That way I have the handle ready just as soon as my basket handler is ready for it."

The handling operation takes less than half a minute, but it never fails to amaze the many visitors to Fenton who enjoy the "up close and personal" tours which take them in small groups to the Hot Metal area of our plant. There's nothing quite like seeing the team (called a shop) of more than two dozen glassworkers working together to make a fancy Cranberry basket!



**F E N T O N**

Handcrafted American Glass Artistry

[www.fentonartglass.com](http://www.fentonartglass.com)



# *Fenton Sales Representatives and Showrooms \**

## **EAST**

### **drummers/Ivystone Group**

Office:  
301 Commerce Dr.  
Exton, PA 19341  
610-524-6400  
800-327-9036  
Fax: 610-524-6429  
customerservice@digsales.com  
and

\*Rockwood Green Plaza  
10134 Hull Street Rd., Suite C  
Midlothian, VA 23112  
804-745-0104

### **C. F. Archer Associates**

2976 Persse Rd.  
Lafayette, NY 13084  
Phone/Fax: 315-677-3263  
cfaa22@earthlink.com

### **\*BrassSmith House**

Northeast Market Center  
1000 Technology Park Dr., Rm. 408  
Billerica, MA 01821  
978-528-5741  
800-777-5743  
Fax: 978-528-5747  
kabjork@rcn.com

### **J. F. Hukill, Inc.**

P.O. Box 23127  
Lexington, KY 40523  
859-576-2743  
Fax: 859-263-5359

### **The Weikels**

P.O. Box 4125  
Greensboro, NC 27404-4125  
336-292-0170  
Fax: 336-299-7498  
weikels@att.net  
and

\*Atlanta Gift Mart  
230 Spring Street NW, Suite 1215  
Atlanta, GA 30303  
404-525-1184  
Fax: 404-525-7214

## **MIDWEST**

### **Coyne's & Co.**

**Gift Connection, U.S.A.**  
7400 Boone Ave., North  
Brooklyn Park, MN 55428  
763-425-8666  
800-336-8666  
Fax: 763-425-1653  
salesdpt@coynes.com  
and

\*Coyne's & Co.  
U.M.A.G.A. Trade Center  
Orange Suite 339  
10301 Bren Road West  
Minneapolis, MN 55343  
(Use Phone Number Shown Above)

### **\*Childers & Associates**

Kansas City Merchandise Mart  
6800 West 115 St., Suite 110-115  
Overland Park, KS 66211  
913-345-8844  
800-341-6692  
Fax: 913-345-8496  
Office Phone/Fax: 913-338-2200

### **\*Simpson Marketing, Inc.**

1524 Merchandise Mart  
Chicago, IL 60654  
312-467-6277  
800-621-5943  
Fax: 312-467-0727  
simpson-m@msn.com

## **NORTHWEST**

### **\*Dick Gibson & Associates**

6100 4th Ave. South, Suite 553  
Seattle, WA 98108  
206-762-1404  
800-828-4608  
Fax: 888-711-5005  
dga@dickgibson.com

## **SOUTHWEST**

### **\*SMI Associates**

2100 Stemmons Freeway  
Suite 1610, Dallas Trade Mart  
Dallas, TX 75207  
214-741-7424  
800-541-7429  
Fax: 214-741-7434  
nfishsmi@aol.com

## **WEST**

### **Peddlers Too**

1478 35th Ave.  
San Francisco, CA 94122  
415-564-4352  
Fax: 415-682-7530  
jimpeidl@sbcglobal.net

### **The Newcombs, Inc.**

P.O. Box 765  
Pacific Palisades, CA 90272  
800-245-5522  
Fax: 310-454-4418  
www.thenewcombs.com  
and  
\*505 LA Mart  
1933 S. Broadway  
Los Angeles, CA 90007  
Phone: 213-746-4545  
Fax: 213-746-0098

### **Hiskey & Co.**

Denver Merchandise Mart  
451 East 58th Ave., Suite 2376  
Denver, CO 80216  
800-448-8551  
Fax: 877-651-1879  
hiskeyco@mfgreps.com

\*\*For Ohio, West Virginia, and  
Western Pennsylvania, please  
contact the Fenton Company



**F E N T O N**

*Handcrafted American Glass Artistry*

700 Elizabeth Street, Williamstown, WV 26187  
304-375-6122 Fax: 304-375-6459 www.fentonartglass.com





F E N T O N

*Handcrafted American Glass Artistry*

*The Fenton Art Glass Company, 700 Elizabeth Street, Williamstown, WV 26187*  
304-375-6122 [www.fentonartglass.com](http://www.fentonartglass.com)