



Catalog Exclusives

Offered exclusively through this catalog, these collectible pieces are handpainted with a beautiful berry pattern designed by Fenton designer Stacy Williams. Notice the artistic shading of color Stacy has created on the leaves to add dimension to the pattern.



The vase is made of exotic Lotus Mist Burmese which contains pure gold in the formula creating the delicate pink accents on the top of the vase. The companion piece is a little elephant in rich violet. A Family Signature grandfather & granddaughter set, the vase is inscribed with the signature of Frank M. Fenton and the elephant bears the signature of Lynn Fenton Erb.

Purchase vase or figurine and register with Fenton for opportunity to win one of three matching \$450 lamps.

9869 V2
Vase, 5" - \$70.00
(Frank M. Fenton)

5158 L2
Elephant, 3 1/2"
\$29.50
(Lynn Fenton Erb)



F E N T O N

Handcrafted Glass Artistry Since 1905



4810 TK
Vase, 6", w/ base
\$105.00



5405 TK
Fairy Light, 5"
\$52.50



8484 TS
Candy Box, 9"
w/cover
\$48.50



5932 TS
Basket, 7"
\$45.00



5290 TS
Slipper, 6" - \$17.50



7707 1L
Temple Jar, 2 pc.
\$85.00

Midnight Safari

Handpainted tropical plants provide a camouflage for these masters of the animal kingdom as they prey beneath the midnight sky. Only the golden eyes of the black panther can be seen as he peers from within the depths of the jungle.

Designed by Martha Reynolds.



5065 IU
Tiger, 5"
\$45.00



5065 IC
Leopard, 5"
\$45.00



5065 IA
Black Panther, 5"
\$35.00

Topaz Opalescent Satin

A revival of the popular "Vaseline glass" from the 1920's, this historical color has uranium in the formula which glows when placed under black light! A straight rib optic is added to some pieces and a delicate lily and dragonfly pattern add interest to these handmade creations.



The Ringer deftly applies a ring of black glass to a Topaz vase to create the Flip Vase in this collection.



5148 TK
Mouse, 2 3/4"
\$29.50

3208 TK
Cruet, 8"
\$115.00

Jungle Cats

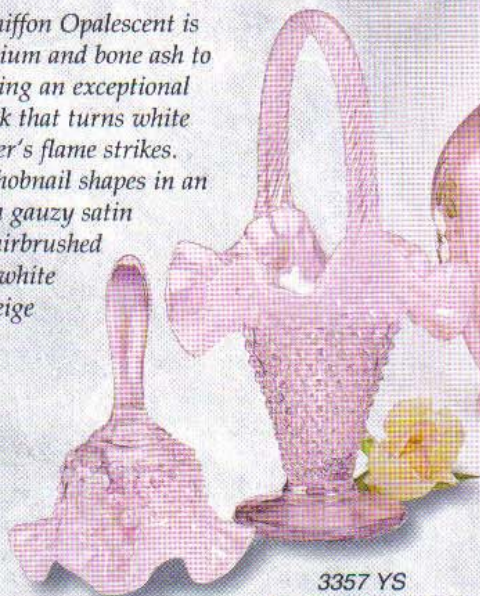
Three handsome lords of the jungle are completely handpainted by the artists at Fenton. Designed by Kim Plauché, the leopard, tiger and panther add strength to the decor of any office or den.

Pink Chiffon Opalescent

New for 2001, Pink Chiffon Opalescent is achieved by adding erbium and bone ash to the glass formula creating an exceptional opalescent shade of pink that turns white wherever the glassmaker's flame strikes. Available in nostalgic hobnail shapes in an iridescent finish or in a gauzy satin finish which has been airbrushed and handpainted with white spring flowers and a beige checkerboard pattern.

D3

3368 YS
Bell, 5 1/2"
\$21.50



3357 YS
Basket, 9" - \$49.50

7386 X9
Vase, 9"
\$89.50

5165 X9
Cat, 3 3/4"
\$29.50

4768 UC
Pitcher, 5 1/2" - \$89.50

Daisy Lane

Handpainted dancing daisy petals on a French Opalescent trellis optic. A Pink Chiffon ring creates a soft touch to this versatile collection.



1145 UC
Bell, 6 1/2" - \$45.00

5151 UC
Bear, 3 1/2"
\$28.50



3992 YS
Boot, 4 1/4"
\$13.50

4752 UC
Vase, 9"
\$95.00

5136 X9
Elephant, 3 1/2"
\$29.50



The handler attaches a handle to the side of a vase to form a pitcher. He pulls the molten strip of glass out and cuts it off then swiftly rounds it into shape before it chills.



5365 ND
Kitten, 3" - \$25.00
"Butterfly Kisses"

5251 N5
Baby Bear, 3" - \$25.00
"Friends Forever"

Hugs for You

Decorative bears and kittens bring smiles to your face. Each is handpainted with whimsical floral patterns ornamented with bees, dragonflies and butterflies. "Happy phrases" on the back complete the delightful handmade "Hugs".

Whispering Winds on Willow Green

Designed by Robin Spindler, this fresh new handpainted design features touches of deep violet and mauve on breezy petals and a flitting dragonfly.



A handler shapes and rounds a basket handle quickly before the handle becomes too cool to move. He has only about 30 seconds to attach and shape the handle.

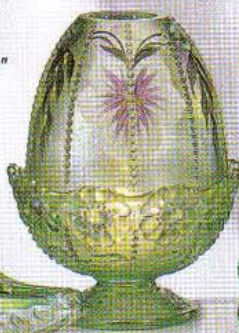


4694 UV
Bell, 6 1/2"
\$39.50

3131 UV
Basket, 8 1/2"
\$85.00



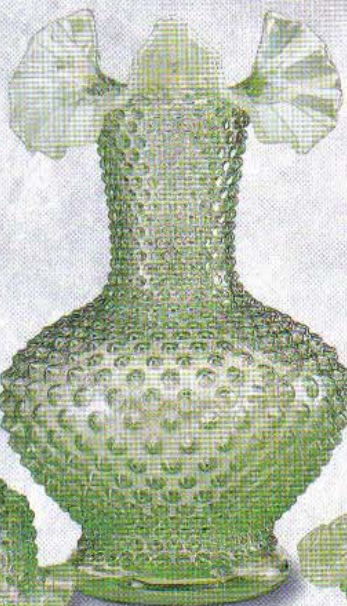
8595 EX
Slipper, 6 1/2"
\$32.50



8405 WQ
Fairy Light, 6"
\$52.50



5165 UV
Cat, 3 3/4"
\$28.50



3752 GY
Vase, 11"
\$68.50



6832 GY
Basket, 4 1/2"
\$27.50



3368 GY
Bell, 5 1/2"
\$21.50

Willow Green Opalescent

Fresh shades of a botanic garden can be envisioned in our Willow Green Opalescent color. A hint of yellow is reflected in this soft green shade when exposed to variations of light. The origin of this timeless color dates back to the Florentine Green stretch glass introduced during the 1920's.

5151 UV
Bear, 3 1/2"
\$28.50

5193 GY
Fish
Paperweight, 5"
\$23.50



5167 TI
Sunfish, 2 1/2"
\$16.00



5167 XT
Sunfish, 2 1/2"
\$16.00

Fish

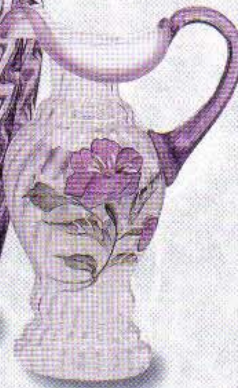
Lively, colorful sunfish and "dolphins" are perfect for today's nautical theme. The sunfish was first made in 1930 while our art nouveau style dolphin arrived about 1971.

Handpainted Lavender Petals

Deep lavender blooms with shimmering pink centers nod happily in the sun. Each handpainted piece is created with an oil based paint which contains finely ground glass called frit. Once the piece is completed it is fired, which causes the frit to melt into the glass and the pattern to become a permanent part of the glass. The spiral optic and Violet ring further enhance this beautifully handpainted design.



3258 OE
Vase, 11"
\$58.50



3081 ON
Pitcher, 6 1/2"
\$95.00



5163 ON
Bird, 4"
\$28.50

1167 OQ
Fairy
Light, 9"
\$85.00



5165 ON
Cat, 3 3/4" \$28.50



5204 AY
Fairy Light
\$52.50

A Fenton artist begins
painting the Lavender
Petals pattern.



5371 OE
Rose Bowl, 6"
w/ Base
\$52.50



5233 OE
Bear, 4"
\$18.50

9265 OE
Bell, 7"
\$20.00

Fenton designer, Jon
Saffell, sculpting the
new Atlantis fairy light
shown above.



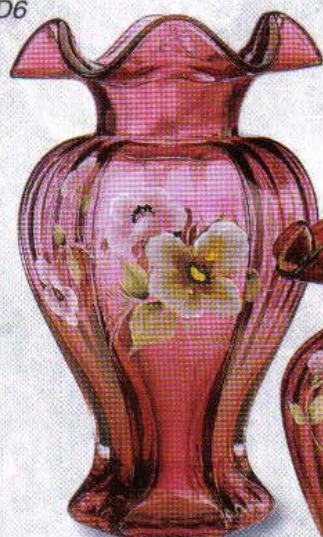
Violet

Crisp clear violet - one of
today's most popular decorating
colors. A wonderful coordinate
with pieces from the Lavender
Petals collection.



2791 ON
Lamp, 18"
\$279.00

D6



1554 C6
Vase, 9"
\$129.50



3249 C6
Vase, 5"
\$59.50

White Poppies on Cranberry

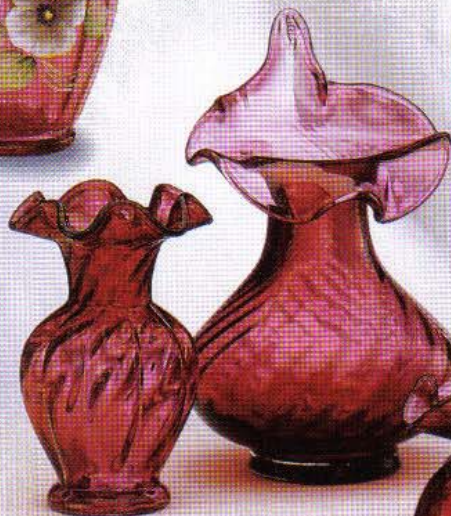
Rich Cranberry glass is further beautified with Kim Plauché's design of traditional white poppies. Blends of deep purple and pink surround the center of the main flower - accented in 22k gold.

A ribbon of dried leaves and stems peek around the flowers to give this beautiful design a stylized appearance.



A Blocker blows the first air bubble into the molten glass on the end of a hollow blowpipe. This will then be blown into the final forming mould.

Teamwork is crucial in the creation of cranberry glass... some pieces will be handled by at least 20 skilled craftsmen.



1214 CC
Vase, 6"
\$37.50

3070 CC
Vase, 8 1/2"
\$69.50



7139 CC
Basket, 7 1/2"
\$75.00



3649 CR
Vase, 4 1/2"
\$52.50

3346 CR
Basket, 7"
\$79.50



3366 CR
Pitcher, 5 1/2"
\$79.50



Cranberry Opalescent Hobnail

Our love affair with Cranberry glass continues into the 21st century. To create these superb pieces, a batch of gold ruby is covered with French Opalescent as it's placed into the mould. Once cooled, the piece is then reheated as the coolest portions turn white. The ageless Hobnail mould design adds further collectibility to these exceptional works of art.

Cranberry contains pure gold in the formula that has been melted into a liquid state.



Frosty Friends

Dressed in decorative sweaters and scarves of soft blues and handpainted stars, Mr. and Mrs. Snowman and their friends get ready for a romp in the snow. Display with glass Christmas trees for fun.



5268 DB
Snowman, 4"
\$32.50



5269 DB
Snowlady, 4"
\$32.50



5535 C9
Christmas
Tree,
Crystal
6 1/2"
\$27.50



5109 DB
Polar Bear, 4 1/2"
\$32.50



5267 DB
Penguin, 4 1/2"
\$32.50

Limited Edition Santa

Our "Morning Star" Santa reflects the crystal blue skies of the North Pole. Stacy Williams added brilliant pearl stars to his pastel blue robe in addition to glitter throughout the fluffy white trim of his coat. Numbered and limited to sales through 11/15/01.



5299 XL
Santa, 8"
\$89.50

Nature's Spirit Angels

Angel collectors will be enchanted with Stacy Williams' design of beautiful magnolia blossoms and berries draping the blushed skirts of each angel. A 22k gold plated lovebird adds a further sense of peace to these remarkable guardians. Numbered and limited to sales through 11/15/01.



5042 BQ
Angel, 6 3/4"
\$65.00



5144 BQ Angel,
5 3/4" \$49.50



2977 MJ
Vase, 7"
\$79.50



5109 MJ
Polar Bear, 4 1/2"
\$32.50



6833 FE
Basket, 8"
\$89.50



4694 FE - Bell, 6"
\$49.50

Vermont Sky and Woodland Frost

Two beautiful handpainted patterns from the artists at Fenton.

The luminous moon overlooking the "Vermont Sky" is the perfect setting for hot chocolate gatherings in front of a roaring fire.

"Woodland Frost" features blustery pines overlooking a frosty background of sparkling snow accented with edges of Emerald Green.

D8



FG118
Star Backdrop,
11 3/4"
\$39.50



5070 NV
Holy Family
\$125.00
Joseph - 7 1/2"
Mary - 6 1/2"
Baby Jesus - 3 1/2" l.

Christmas Star Nativity

Fenton sculptor Jon Saffell has skillfully captured the beauty of Mary and Joseph as they pause to give thanks for the miracle that has been bestowed upon them. This beautifully stylized Nativity set is handcrafted in serene Crystal. Kim Plauché developed a simple, yet elegant, design of iced stars - made from crushed glass - and gold glitter for extra sparkle. Shades of winter sky blue have been air brushed along the outer edges of the gown for added appeal. The brilliance of Crystal shines brightly when displayed under a spotlight. A luminous star backdrop is also included to set the tone for this tender family moment.



F E N T O N

Handcrafted Glass Artistry Since 1905

Free Gift with \$45 Purchase

Limited Availability

Submit this catalog to Your
Fenton Dealer with a \$45
Purchase and Receive a
FREE Owl Ring Tree.

This embossed rose owl ring tree is available in two pretty Fenton colors through your dealer as a gift with a \$45 Fenton purchase. A \$13.50 value, it is perfect for a dresser, sink or window sill. Visit and get yours today! (Limit one per customer)



9299 WI
\$13.50

9299 OE
\$13.50