



2004 Catalog

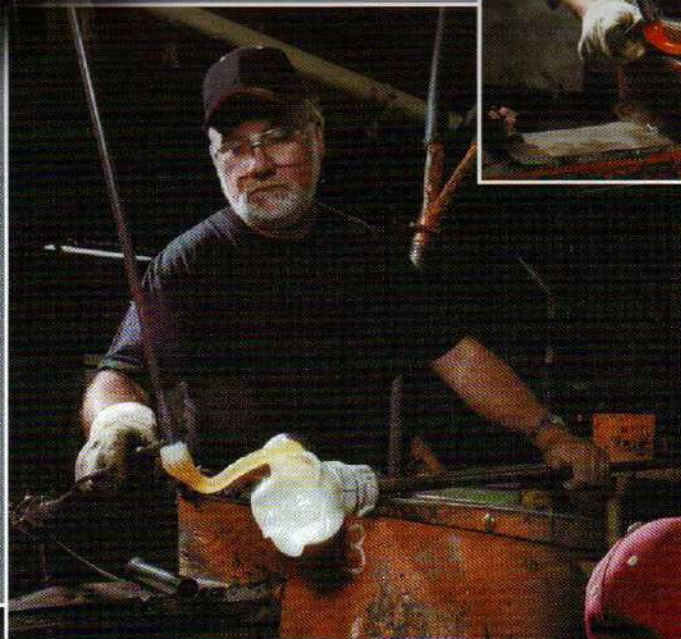
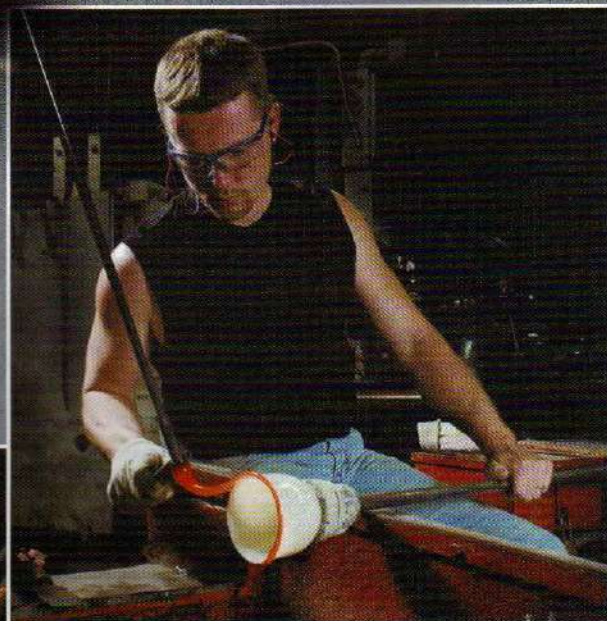


F E N T O N

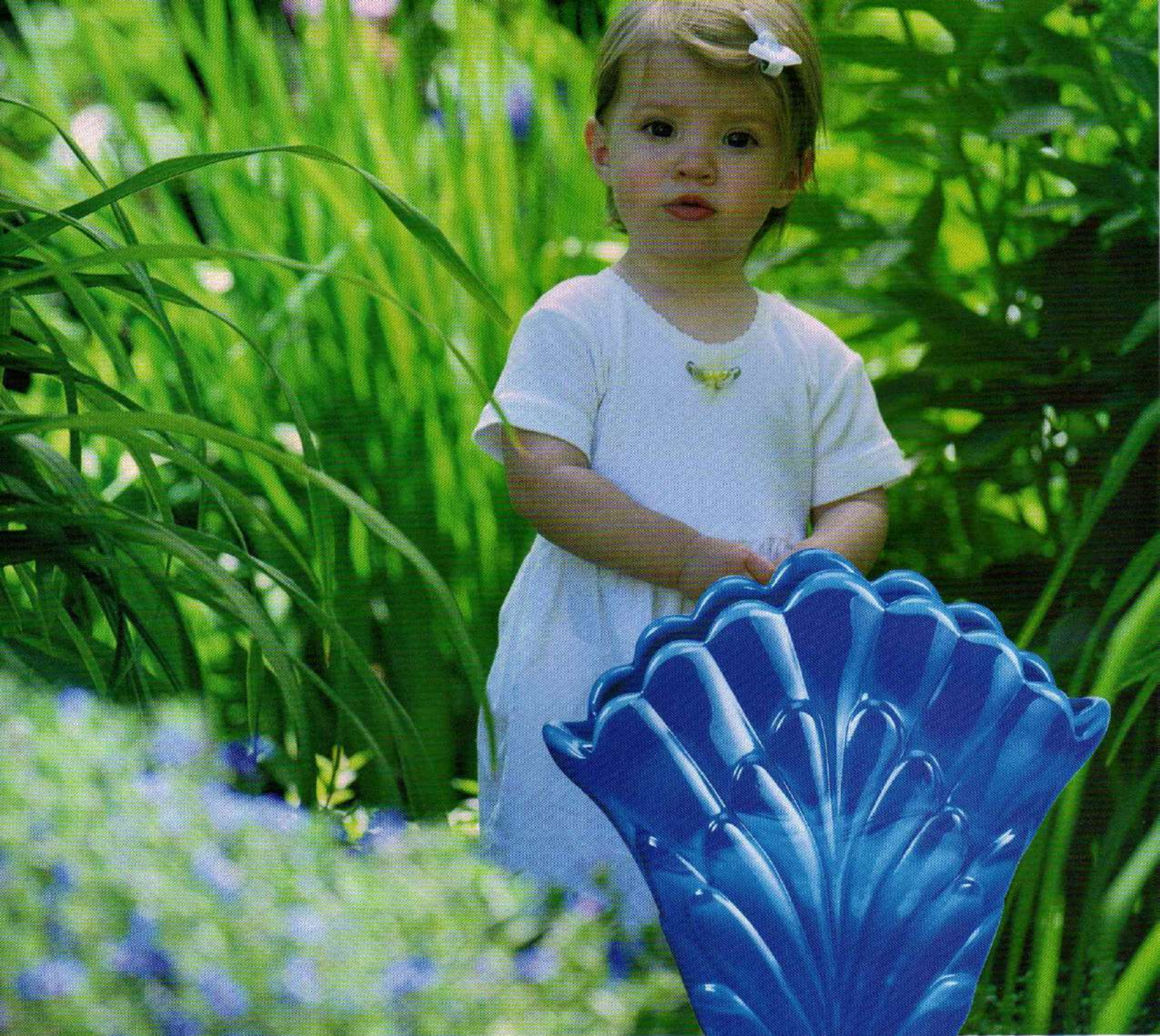
Handcrafted American Glass Artistry

www.fentonartglass.com

The Artistry of Fenton



Original Photography by: Jim Osborn
Osborn Photographic Illustration
Williamstown, West Virginia 26187
Lithography by: Richardson Printing Corporation
Marietta, Ohio 45750



a Fenton moment



F E N T O N

Handcrafted American Glass Artistry

Periwinkle Blue

A vivid opaque blue that works well in American Country or French Country décor, this striking blue medley is an original Fenton color developed by Paul Rosenthal during the 1930s. The heat-sensitive glass ranges from light to dark blue to create beautiful gradations of color—a true art glass treatment. The elegant Chanticleer (French for "rooster") originated at the Fostoria Glass Company, while the Alley Cat and Tobacco Jar are proven winners in the Fenton line.

5077 P2
Chanticleer
10"

9071 P2
Candlestick, 8½"
(sold individually)

9560 P2
Bell, Templebells
6½"

FENTON
Handcrafted American Glass Artistry
www.fentonartglass.com

Fenton Notes

The Art of Periwinkle Blue

We first made Periwinkle Blue in the mid-1930s. This aptly-named opaque color joined a host of other distinctive Fenton hues—Chinese Yellow, Ebony, Jade Green, Lilac, Mandarin Red, Mongolian Green, and Moonstone. The nature of the glass creates a range of shades within each item, so no two pieces will be exactly alike!

5937 P2
Basket, Paneled
10"

5158 P2
Elephant, 4"

4802 P2
Epergne, Diamond Lace
10"

Fenton Notes

The Art of the Gatherer

Every glassmaking operation begins with a skilled worker called a gatherer. Using a blowpipe or a punty, the gatherer faces the fire of a 2500-degree melting furnace as he obtains the proper amount of molten glass needed for the item to be made. The gatherer must work quickly, and he must be consistent each time he gathers glass from the furnace.

Historic Collection

Limited to one year
of production, 2004.

0036 AS

13 Pc. Periwinkle Blue
Assortment

5177 P2

Cat, Alley, 11"

1995 P2

Slipper, 6" l.



9499 P2

Logo, Oval, 3 1/2" w.



5956 P2

Vase, Plume, 8"
Inscribed with the signature
of Shelley Fenton
(limited to sales through
May 15, 2004)



9188 P2

Tobacco Jar, 7 1/4"



5243 P2

Cat, Curious
3 1/2"



7513 P2

Comport, Dolphin, 5 1/4"

Honor Collection

Our Honor Collection for 2004 is a tribute to Fenton chemist Paul Rosenthal. Following in the footsteps of his father, Jacob Rosenthal (Fenton's first factory manager and chemist), Paul developed many distinctive transparent and opaque Fenton glass colors in a career that ended with his retirement in 1949.

Topaz Opalescent combines two rare glassmaking elements—depleted uranium and bone ash—to create a vivid yellow with soft vanilla accents. Frances Burton's floral motif "Autumn Beauty" complements the brilliance of this remarkable and popular glass color.

7708 TC
Temple Jar
10 1/2"
(limit: 1950)

7175 TS
Epergne, Swirl, 9"
(limit: 1950)

5937 TC
Basket, 10"
(limit: 1950)

1595 TC
Fairy Light, 7"
(limit: 1950)

1582 TC
Vase, 5"
(limit: 1950)

7160 TC
Candy Box, 6 1/2" w.
Inscribed with the signature
of Frank M. Fenton
(limited to sales through May 15, 2004)

0037 AS
8 Pc. Honor Collection
Assortment

3292 TC
Vase, 8 1/2"
Inscribed with
the signature
of Scott Fenton
(limit: 2500)

Showcase Dealer Exclusive

From our Honor Collection, this graceful vase bearing Frances Burton's "Autumn Beauty" design is the Showcase Dealer Exclusive for Spring 2004. Only authorized Fenton Showcase Dealers may offer this exclusive piece, which is individually numbered and limited to sales to Showcase Dealers through May 15, 2004. Inscribed with the signature of Scott Fenton. (Limit: 2500)

FG115F
Showcase Dealer Exclusive Postcard
(Pack of 100)



See your local representative to discuss how you can acquire one of these beautiful Fenton showcases to enhance your store's presentation of Fenton.

Amethyst Carnival

5

Carnival glass has been a Fenton trademark since 1907. The deep shade of amethyst glass, which played a vital role in our revival of Carnival during the 1970s, is sprayed with metallic salts while the glass is still hot. As the spray is applied, a rainbow of rich color emerges. Frances Burton used metallic paints to create her "Golden Daisy" motif, adding luster and depth. Six unique moulds (some from Fostoria and others from Imperial or Indiana) complete this new Fenton grouping.



6555 C4
5 Pc. Apple Tree
Water Set, 8"
(pitcher and 4 tumblers)

6576 C4
Tumbler, 4"

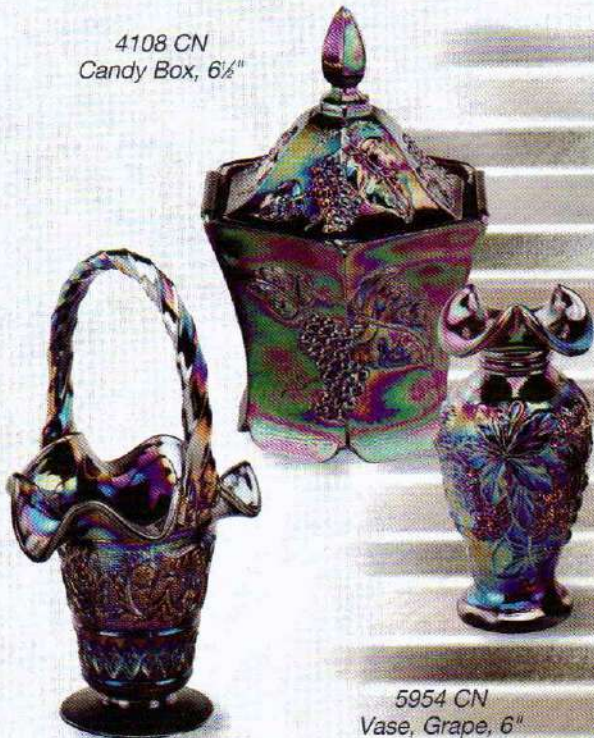
8395 CN
Vase, Cornucopia,
Feather, 7"

0038 AS
11 Pc. Amethyst
Carnival Assortment

5066 CN
Hummingbird
4 1/2"

4108 CN
Candy Box, 6 1/2"

4204 CN
Pie Wagon, 5 1/2"
(limit: 990)



4534 CN
Basket, 9"

5954 CN
Vase, Grape, 6"

2856 C4
Vase, Tulip, 8 1/2"



6063 UN
Pitcher
7 1/2"

4634 UN
Basket, Peacock
8"

5085 UN
Puppy, 4"

4764 UN
Bell, Threaded
5 1/2"

 **FENTON**
Handcrafted American Glass Artistry

www.fentonartglass.com

Designer Fairy Lights

5980 HB
Fairy Light, 5½"
"Lily Pond"
Green Apple on Cobalt
Kim Barley



Our annual collection of luminous designs echoes the distinctive personalities of our talented Decorating Designers: Kim Barley, Frances Burton, Robin Spindler and Stacy Williams. Fairy Lights, one of the most collectible forms of glass, have been popular since the Victorian era and are featured in numerous books. These functional works of art reflect the individuality of the designer, bear a handpainted decoration, and are signed by the artist who handpainted them. Each is offered in a strictly limited edition of 1950 pieces.

0039 AS
4 Pc. Designer Fairy Light
Assortment

7300 UQ
Fairy Light, 5"
"Sweet Nectar"
Violet on Milk Glass
Frances Burton



7300 TA
Fairy Light, 5"
"Royal Garden"
French Opalescent on Celeste Blue
Robin Spindler



Fenton Notes

The Art of Fairy Lights

There is something magical and romantic about a fairy light, as the soft glow of candlelight is further diffused by the colored glass. An English candlemaker, Samuel Clarke, is credited with inventing and popularizing the fairy light in his native land during the 1880s. Fenton first made fairy lights in the early 1950s, and collectors eagerly await our new ones!



5980 YC
Fairy Light, 5½"
"Rambling Roses"
Sunset Iridized
Stacy Williams

Four Seasons Baskets

Mary Gregory for every season! Our most popular decorating style is featured on four different shapes in seasonal colors—each depicting a small child.

Emerald (Spring), Violet (Summer),
Ruby (Fall), Cobalt (Winter)

Special Note:

A portion of the proceeds from the sale of the Summer basket shown here will be donated to the Amyotrophic Lateral Sclerosis Association. Over the years, ALS (Lou Gehrig's disease) has impacted the lives of loved ones in the extended Fenton family.

Each basket will be inscribed with the signatures of ten Fenton family members and the charity logo will appear on the bottom.



0040 AS

4 Pc. Four Seasons Baskets
Assortment



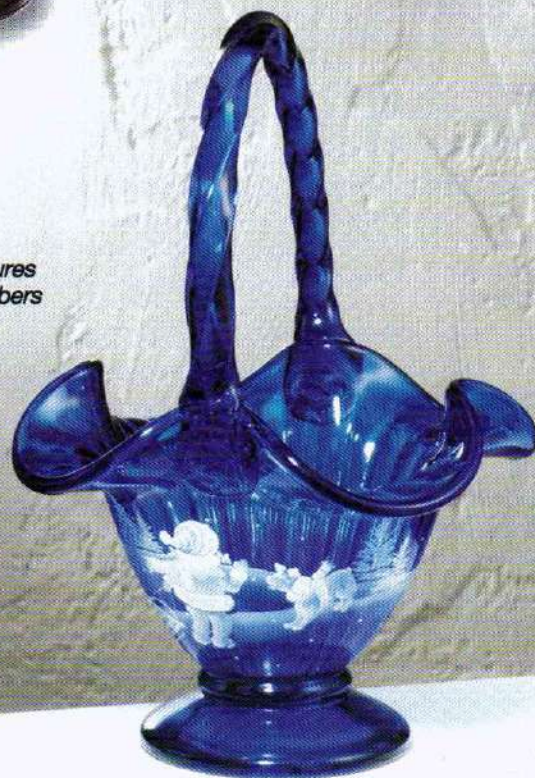
Spring
7134 SH
Basket, 10"
"Bouquet for kitty"
Emerald Green
(Kim Barley)



Summer
5931 ST
Basket, 9"
"Wish upon a star"
Violet
(Robin Spindler)
Inscribed with the signatures
of ten Fenton family members



Fall
6335 WS
Basket, 10"
"Happy Halloween"
Ruby
(Frances Burton)



Winter
5977 TT
Basket, 9½"
"Catch!"
Cobalt
(Stacy Williams)



F E N T O N
Handcrafted American Glass Artistry

www.fentonartglass.com

Glass Messenger

2004 Subscriber Exclusives

5064 VH
Sleeping Kitten, 3½" L
Inscribed with the
signature of
Lynn Fenton



5958 VH
Vase, Paneled, 6"
Inscribed with the signature
of Tom Fenton

Subscribers to the Fenton Glass Messenger will be delighted with the opportunity to select from two exclusive pieces for 2004—a classic Cranberry Opalescent vase, a Fenton signature color, along with a coordinating French Opalescent Sleeping Kitten. Both pieces are handpainted with a graceful "Indiana Pansies" design by Kim Barley and each will be numbered, dated, and inscribed with a Fenton family member's signature. Fenton sculptor Jon Saffell created the precious Sleeping Kitten while the paneled Cranberry Opalescent vase is made with an Indiana Glass Company mould as a "first-ever" Fenton production.

Exclusives limited to sales through November 30, 2004.



FG119
Glass Messenger Postcard
(pack of 100)



FG208
Subscription Rack Card
(pack of 20)

FG086
Annual
Subscription
(4 issues)

(Includes FREE binder with initial order)

6854 IU
Vase, Aurora, 7½"
Inscribed with the signature
of Mike Fenton



Family Signature Series

As we approach our 100th year, the Fenton heirloom tradition continues with this special collection reflecting the history of the family-owned Fenton Art Glass Company. From our start as a decorating company in 1905, through nine decades and into the 21st century, Fenton is the home of the most respected handcrafted glass artistry in America.

The Fenton heritage is showcased in the Family Signature Series. Each piece is handpicked by a Fenton family member as an example of the glass artisan's and glass decorator's finest work. Frank L. Fenton's pride and enthusiasm for handcrafted glassware carries through the generations of Fenton family members who remain involved in the development and continuation of glass artistry in America.

Each piece is individually numbered, dated, and inscribed with the signature of a Fenton family member, and signed by the decorator who handpainted it.

Limited to sales through
May 15, 2004

6501 RL
Epergne, 9"
Inscribed with the
signature of
Nancy Fenton



7160 TC
Candy Box, 6½" w.
Inscribed with the signature
of Frank M. Fenton



5956 P2
Vase, Plume, 8"
Inscribed with the signature
of Shelley Fenton



5732 MJ
Basket, 9"
Inscribed with the
signature of George Fenton





Fenton lives here



F E N T O N

Handcrafted American Glass Artistry

Celeste Blue Stretch

Crisp white daisies float on a sky of Celeste Blue in Stacy Williams' "Dancing Daisies" design. Accents of bright spring green allow these pieces to harmonize perfectly with our Green Apple color statement.

0042 AS
14 Pc. Celeste Blue Stretch
Assortment



1168 KP
Vase, Footed
6"

5951 KP
Vase, Cloverleaf, 8 1/2"

6530 KP
Basket, 7"

Fenton Notes

The Art of Celeste Blue Glass

First made in the 1920s, this color takes its name from the Italian celeste (pronounced "chay-less-tay"), which means "celestial, divine or heavenly." We couldn't agree more! The splendid matte iridescence is a real tribute to the artisans who labored at Fenton some eighty years ago when this glass was first produced.



5430 KP
Basket, 8"

5960 KP
Candy Box, 6"

9144 KJ
Ringholder, 3"

5065 KP
Cat, 5"

Fenton Notes

The Art of Stretch Glass

During the manufacturing process, these items are sprayed with a mixture of metallic salts before being reheated and brought to their final shape by a skilled glassworker called a Finisher. This finishing procedure often creates a myriad of striations and even a somewhat rough texture in the iridescent surface, particularly at the edges of the piece.

5951 KA
Vase, Cloverleaf
8½"

5066 KJ
Hummingbird
4½"

9596 K4
Votive, Two-way
4½"

5290 K4
Slipper, Cat, 6" l.

6536 KA
Bell, Drapery
6"

4585 KJ
Basket, Paneled Grape
4½"

7108 JQ
Box, Paneled, 6"

5058 K4
Elephant, Baby
3½"

 **F E N T O N**
Handcrafted American Glass Artists
www.fentonartglass.com

1168 KA
Vase, Footed
6"

2759 K4
Rose Bowl, 3½"

5290 JH
Slipper, Cat, 6" l.

5430 KA
Basket, 8"



a Fenton moment



F E N T O N

Handcrafted American Glass Artistry

0043 AS
15 Pc. Green
Apple
Stretch
Assortment

Green Apple Stretch

Inspired by Florentine Green from the 1920s, this fresh new color blends perfectly with the lively colors now popular in home décor. A delicate "Pansy Morning" design by Stacy Williams enhances the sparkling Green Apple color—simply delightful when paired with Celeste Blue Stretch or pair with Rosemilk for a trendy retro look.

2753 JP
Vase, Handkerchief
10"

5937 JP
Basket,
Paneled
10"

5066 JD
Hummingbird, 4½"

2077 JH
Votive, Drapery,
Two-way, 4½"

2835 JP
Basket, Wildflower
7"

9144 JD
Ringholder, 3"

5166 JH
Cat, 3¼"

2759 JH
Rose Bowl, 3½"

5966 JP
Bell, Priscilla
4½"

7327 JQ
Rose Bowl, 5½"

5937 JQ
Basket, Paneled
10"

5220 JQ
Pig, 3"

5405 JQ
Fairy Light, 5"

7108 JQ
Box, Paneled
6"

5290 JH
Slipper, Cat, 6" l.



Blue Hydrangeas on Black

The contrast of pale blue blossoms against a midnight sky has a timeless elegance. Kim Barley's dramatic garden of blue hydrangeas graces this stylish assortment, which features a new whimsical Mouse and covered candy box.



F E N T O N

Handcrafted American Glass Artistry
www.fentonartglass.com

0044 AS

8 Pc. Blue Hydrangeas
on Black Assortment

9550 QB
Vase, Fan
8"



7688 QB
Vase, 5½"



7160 QB
Candy Box
6½" w.



5148 QB
Mouse, 3"

Fenton Notes

The Art of Black Glass

This lustrous glass color has been called either Ebony or Black at various times in Fenton history. Manganese creates dark amethyst glass, and, in combination with other ingredients, results in an opaque black color. Fenton decorators must often handpaint an underlying layer of white enamel so that the final vivid colors will contrast with our black glass.

Black Pendant

The art of the jeweler meets the skill of the craftsman in this elegant 2¼" black glass drop pendant enhanced with a stylized floral sterling silver motif and an 18" sterling silver chain.



3097 QB
Basket, 10½"



5951 KA
Vase,
Cloverleaf
8½"

5065 QB
Cat, 5"

9399 BK
Pendant, 2¼"



Functional pieces in translucent French Opalescent for an array of entertaining needs. A new Lily of the Valley cakeplate and Daisy & Button cream and sugar set provide endless wedding gift ideas. Wonderful heirlooms to pass on to your family's next generation of Fenton collectors.



5371 FM
Rose Bowl w/stand, 8"

2077 FS
Votive, Drapery
Two-way
4 1/2"



0045 AS
12 Pc. Entertaining with Fenton
Assortment

1928 FM
Bowl, Daisy & Button, 11" dia.



FG229
Entertaining with Fenton
brochure, 50 pack
(no charge)

Share the fun of collecting American-made glass and begin an heirloom tradition. Brochure with color photos of decorating and entertaining ideas, an introduction to decorating and entertaining with Fenton.

1902 FS
Cream & Sugar,
Daisy & Button, 3 1/2"



8416 FZ
Cakeplate,
Lily of the Valley
13 1/2" dia.



5116 FS
Leaf Plate, 8 1/2" dia.

1906 FS
Salt & Pepper,
Daisy & Button, 3 1/2"

1910 FS
Covered Butter
Daisy & Button, 8" l.

Grape Arbor on Violet and French Opalescent

Kim Barley's lush grape motif was inspired by our successful "Wine Country" design, and the wine theme remains a popular décor influence. The finishing touch of a handcrafted violet ring adds a formal note to handpainted selections on French Opalescent. Absolutely stunning when displayed with Rosemilk or gleaming Violet pieces.

6335 VQ
Basket, 9½"

5365 OE
Kitten, 3"

5074 VV
Cat, Grooming
4"

7619 VV
Rose Bowl, 3½"

9144 OE
Ringholder, 3"

5371 OE
Rose Bowl w/stand, 8"

Fenton Notes

The Art of the Ringer

Extraordinary skill is required to apply a thin ring of molten glass on the edge of a Fenton item during the manufacturing process. The glass must be just the right temperature, and the Ringer must work quickly to spin just the right amount of glass. The Ringing process has been a Fenton hallmark since the late 1930s.

2077 OE
Votive, Drapery
Two-way, 4½"

5163 VQ
Bird, 4"

5066 OQ
Hummingbird
4½"

3093 VV
Vase, 8½"

6503 VQ
Lamp, Student
20"

0046 AS
20 Pc. Violet Assortment

FENTON
Handcrafted American Glass Artistry
www.fentonartglass.com



9219 OE
Lamp, Gone with the Wind
23"



5995 OE
Basket, Panel Dot
10"



7653 OE
Vase, Daffodil, 7 1/2"



6780 OE
Candy Box, Paisley, 7"



1554 OE
Vase, Hexagonal
9"



3240 VQ
Vase, 10"



5980 VQ
Fairy Light, 5 1/2"



5085 VV
Puppy, 4"



7612 VV
Basket, 9 1/2"





a Fenton moment



F E N T O N

Handcrafted American Glass Artistry

Tulip Delight on Rosemilk Opalescent Stretch

The soft appeal of creamy Rosemilk Opalescent provides the perfect balance for this vibrant Kim Barley design, "Tulip Delight," created with a special combination of high gloss paints to complement the luster of the rich stretch treatment.



F E N T O N

Handcrafted American Glass Artistry

www.fentonartglass.com

0047 AS

13 Pc. Rosemilk Opalescent
Stretch and Tulip Delight
on Rosemilk Opalescent
Stretch Assortment

7709 BS
Rose Bowl
w/stand, 8"

5762 BS
Bell, 5 1/2"

7300 BS
Fairy Light, 5"

5365 N3
Kitten, 3"

4200 BS
Lamp, Petal
21"



Rosemilk Opalescent

Our best selling items in luscious Rosemilk Opalescent return with a new cat to extend the "Tulip Delight" grouping. Simply beautiful when paired with Green Apple Stretch glass. Pink and green has emerged as a strong design statement in home décor.



F E N T O N
Handcrafted American Glass Artistry
www.fentonartglass.com

2988 BS
Vase, 6½"



5074 BS
Cat, Grooming, 4"

5733 BS
Basket, 9"

9144 NZ
Ringholder, 3"

1995 N3
Slipper, 6" l.

8484 NZ
Candy Box, 9½"

Fenton Notes

The Art of Kim Barley

Decorating Designer Kim Barley has been employed at Fenton for more than 20 years. Her inspiration for designs often comes from a love of fashion as well as her interests in flowers and aquatic life. Kim's work has been recognized with awards from the Society of Glass and Ceramic Decorators and the National Association of Limited Editions Dealers.

7653 NZ
Vase, Daffodil
7½"



2077 NZ
Votive, Drapery Two-way, 4½"

6838 NZ
Basket, Thistle
7"



5066 NG
Hummingbird
4½"

2753 BS
Vase, Handkerchief,
10"

Lilacs and Roses

The delicate beauty of the rose is the focal point of Stacy Williams' fresh design on sanded opal glass. Blushed pink provides the perfect balance of color for this delicate design of dainty lilac clusters and rosebuds surrounding a rose in full bloom. A candy box and two figurines are new to this popular collection that is a perfect companion for our Rosemilk or Violet.

7160 WP
Candy Box, 6½" w.

7300 WP
Fairy Light,
5"



9295 WP
Slipper, Rose
6" l.

5064 WP
Sleeping Kitten
3½" l.

0048 AS
10 Pc. Lilacs and Roses
Assortment

2777 WP
Basket, 8"



6508 WP
Lamp, Student
20"



9667 WP
Bell, 6"

6853 WP
Vase, 8½"

5065 WP
Cat, 5"



5163 WP
Bird, 4"

5158 WP
Elephant, 4"



a Fenton moment



F E N T O N

Handcrafted American Glass Artistry

Ruby Amberina Stretch

Seven new shapes are showcased in this popular grouping. Select pieces are offered either plain or handpainted with Kim Barley's lovely "Trailing Wisteria" design. Fenton produced Stretch glass from 1917 through the 1920s in the glamorous and elegant art deco style, and these pieces are treasured today as timeless classics. The intense glow of Fenton's furnaces is captured forever in the iridescence and luster all inherent in the magic of Ruby Amberina Stretch glass.

0049 AS
13 Pc. Ruby
Amberina Stretch
Assortment



6501 RL
Epergne, Swirl, 9"
Inscribed with the signature
of Nancy Fenton
(limited to sales
through May 15, 2004)

7536 RL
Basket, Melon, 8"



7704 TR
Rose Bowl,
w/black base
5"



5064 TR
Sleeping Kitten
3 1/2" l.



6949 RL
Basket, Teardrop
4 1/2"

7143 TR
Plate, 11" dia.
(stand not included)



5960 TR
Candy Box, 6"



1168 TR
Vase, Footed, 6"



Ruby Amberina Stretch

FENTON
Handcrafted American Glass Artistry
www.fentonartglass.com

5956 RL
Vase, Plume
8"

1168 RL
Vase, Footed
6"

7704 UR
Rose Bowl
w/black base, 5"

9596 UR
Votive, Two-way
4½"

2753 RL
Vase,
Handkerchief
10"

5085 UR
Puppy, 4"

5987 RL
Bowl, Ribbed
12" dia.

Fenton Notes

The Art of Ruby Glass

In the first half of the twentieth century, glassmakers strived to make a uniform ruby color suitable for railroad signals, lantern globes, and auto taillights. Today, Fenton's Ruby glass is made with selenium and cadmium. This glass batch is sensitive to heat, and interesting color variations often occur. Collectors take great delight in the red-orange effect called "amberina."



5960 UR
Candy Box, 6"



7143 RL
Plate, 11" dia.
(stand not included)



5083 UR
Tray, Fish, 9½" l.



a Fenton moment



F E N T O N

Handcrafted American Glass Artistry

5960 KN
Candy Box, 6"

Americana

Stacy Williams' "Country Pennsylvania" stencil design on crisp Milk Glass complements today's popular country decor. Deep Cobalt edges on the basket and vase are a hallmark of Fenton craftsmanship, and the handpainted motif showcases the skill of our American artisans, who continue an age-old tradition.

F E N T O N
Handcrafted American Glass Artistry
www.fentonartglass.com

0050 AS
15 Pc. Americana
Assortment

6854 IU
Vase, Aurora, 7½"
Inscribed with the signature
of Mike Fenton
(limited to sales
through May 15, 2004)

5220 IU
Pig, 3"

1516 KN
Vase, 8½"

Fenton Notes

The Art of Stacy Williams

Hours of perusing art history books often provide inspiration to decorating designer Stacy Williams, but some of her creations, she says, "just come to me when I look at the piece of glass." Stacy attended the Columbus College of Art and Design before joining Fenton as a decorator in 1993. Her work is a delight to Fenton collectors everywhere.

5163 IU
Bird, 4"

5439 IU
Basket, 9"

9144 KN
Ringholder, 3"

0036 AS
6 Pc. Patriotic Paperweights
Assortment

Patriotic Paperweights

8747 AT
U.S.A., 4½" w.

8752 AT
Star, 4½"

8751 AT
Heart, 4"

Fenton Notes

The Art of Blue Glass

Fenton has more than sixty different recipes for various transparent and opaque blue glass colors! Cobalt creates a dark blue, and copper imparts a light blue. In combination with each other or with additional coloring agents, cobalt and copper are used for almost all of our blue colors. Other ingredients (and the exact amounts used) are carefully guarded secrets.



5999 CR
Lamp, Student
20"

(Refer to page 30
for the entire offering of
Cranberry Opalescent)

7653 KN
Vase, Daffodil
7½"



1995 KN
Slipper, Daisy & Button
6" l.



2077 KN
Votive, Drapery
Two-way, 4½"

9972
Made in USA
Counter Sign

Cobalt

Cobalt returns by popular demand! This staple decorating color is perfect for French Country, Americana, or the basic blue and white decor found in today's homes. Select pieces are offered either plain or handpainted with Frances Burton's "Yankee Scroll" design.

0062 AS
11 Pc. Cobalt
Assortment

5904 IC
Tumble-up
8"

5960 IC
Candy Box
6"



6838 KN
Basket, Thistle, 7"



1516 IC
Vase, 8½"



5265 KN
Rooster, Mini, 2½"

Ivory Rose on Cranberry

Ivory rose petals traced with delicate forget-me-nots on a field of rich Cranberry glass comprise Frances Burton's romantic "Ivory Rose" design. Roses remain the most romantic flower, and the romance continues with two new pieces, a perfume bottle and a 4 1/2" vase, in the collection.

0051 AS

11 Pc. Ivory Rose on
Cranberry & Cranberry
Assortment

3292 N7
Vase, 8 1/2"

1515 N7
Candy Box, 5 1/2"

7105 N7
Perfume, Beaded Melon
6 1/2"

6546 N7
Vase, 4 1/2"

1509 N7
Lamp, Student
18"

FENTON
Handcrafted American Glass Artistry

www.fentonartglass.com

Fenton Notes

The Art of Frances Burton

Elegant floral motifs and intricate details are the hallmarks of Frances Burton's many award-winning creations on handpainted Fenton glass. An avid gardener and photographer, Frances started at Fenton in 1973. She enjoys painting elaborate scenic designs as well as the multi-colored florals which have pleased so many collectors of Fenton glass over the years.

5858 CC
Vase, Wheat
8"

6341 CC
Pitcher, Drapery
6 1/2"

3242 N7
Basket, 10"

The leading color statement of non-limited glass offered by Fenton continues to be classic Cranberry. This collectible color is created from a batch containing pure gold, which is then wrapped in a layer of crystal glass. Each piece is blown by a skilled craftsman using one or more moulds to create the particular shapes and patterns.

3292 CC
Vase, 8½"



9464 CC
Basket, 8½"



1515 CC
Candy Box, 5½"



7105 CC
Perfume, Beaded Melon, 6½"

2047 CC
Vase,
Drapery Optic
10"



9219 CC
Lamp, Gone with the Wind
23"



3245 CC
Basket, Drapery
10½"



7685 CC
Ewer, Beaded Melon
4½"



4763 CC
Pitcher, 4½"



3293 CC
Vase, 5½"



Cranberry Opalescent

The exceptional excellence of Cranberry is taken a step further. These brilliant pieces are created when Gold Ruby is covered with French Opalescent and placed into the mould. After a brief cooling process is complete, the pieces are reheated, and the coolest portions turn white. The timeless Fenton Hobnail pattern is a treasured example of American craftsmanship.

1808 CR
Lamp, Handkerchief,
Daisy and Fern
21"

3322 CR
Bowl, 10" dia.

3346 CR
Basket, Hobnail, 7"

3367 CR
Pitcher, Hobnail, 8"

Fenton Notes

The Art of Cranberry Glass

A Fenton staple since the late 1930s, Fenton cranberry glass is made with pure gold. This precious metal, in pelletized form, must be dissolved in a mixture of two strong acids before it can be mixed into the glass batch. Pure gold reacts with intense heat to create the beautiful cranberry color.

3326 CR
Vase, Hobnail, 5"

3856 CR
Vase, Hobnail, 6"

3752 CR
Vase, Hobnail
11"

3304 CR
Lamp, Gone with the Wind
25"

9218 CC
Lamp, Rose, 20"



a Fenton moment



F E N T O N

Handcrafted American Glass Artistry

Princess Roses on Sunset

Creamy milk glass is encased in a thin layer of Sunset to create this versatile color that blends with green, black, violet, brown or cream. Kim Barley used deep coral enamel colors in her "Princess Roses" design to showcase the pure beauty of this romantic decorating color.

2955 SB
Vase, 9"

5937 SB
Basket, Paneled
10"

FENTON
Handcrafted American Glass Artistry
www.fentonoriginalglass.com

4694 SB
Bell, Legacy
6"

7780 SB
Box, Bee
5½"

9295 SX
Slipper, Rose, 6" w.

0053 AS
18 Pc. Sunset Stretch
Assortment

6891 SB
Lamp, Student
18"

Fenton Notes

The Art of Overlay Glass

For more than half a century, overlay colors have been produced by Fenton. Typically, a core of milk glass is gathered and shaped by a skilled glassworker called a Blocker. Then, a layer of colored glass is gathered over the milk glass. Our glass technologists assure that the two layers of glass will match perfectly, expanding and contracting at the same rate.

5371 SX
Rose Bowl w/stand
8"

6819 SB
Pitcher, 6½"



Fenton Notes

The Art of Sunset Glass

This recently-developed Fenton color is a refinement of the many pink colors we have made since the 1920s. The primary colorant is selenium, and this ingredient is extraordinarily sensitive to heat. The glass batch must be carefully melted and worked quickly to maintain the proper range of color. Sunset shades from a luscious peach to a warm sienna.

1928 SD
Bowl, 11" dia.



5116 SD
Plate, Leaf
8½" dia.



5066 SD
Hummingbird
4½"



7104 SX
Candle Jar, 7½"
(candle not included)

6532 SW
Basket, Daffodil
8½"



7653 SW
Vase, Daffodil
7½"



2077 SD
Votive, Drapery, Two-way
4½"



5296 SD
Butterfly, 3"



FG196
Inspirations Counter Sign
(no charge)

Inspirations

The words "Star light, star bright . . . all are precious in His sight" float on a midnight sky of Cobalt glass punctuated with ice crystal stars and sparkling 22k gold. Reflecting the wonder of the star-filled sky, our newest Inspirations continue to spread the good word with an uplifting message designed to inspire the giver and the recipient.

0534 AS
10 Pc. Inspirations
Assortment



a Fenton moment

- Handcrafted with 22k gold and lights
- Lead-free glass in USA
- The words "Star light, star bright, all are precious in His sight" appear on Cobalt blue glass
- Perfect to give or to own

5014 S3
Angel, 6½"

5163 S3
Bird, 4"

4694 S3
Bell, 6"

7241 S3
Rose Bowl, 3½"

5064 S3
Sleeping Kitten, 3½" l.

Inspirations on French Opalescent

**"Those who love the Lord
shine as the sun!"**

These words float through a sunny sky as a lone bumblebee makes its way among a field of smiling daisies. Stacy Williams' popular design continues to spread a message of faith and caring to one and all.

F FENTON
Handcrafted American Glass Artistry
www.fentonartglass.com

9474 Q4
Bell, 6½"

7241 Q4
Rose Bowl/ Vase
3"

5162 Q4
Bunny, 3"

5136 Q4
Elephant, 3½"

5233 Q4
Bear, 3¼"

5163 Q4
Bird, 4"

0063 AS

12 Pc. Inspirations on
French Opalescent
Assortment

Angels

This inspiring group of winged cherubs comes in an array of colors, each handpainted with pride. A thoughtful keepsake to give or to own.

0364 AS
6 Pc. Angel
Assortment

5014 MD
Angel, 6½"
(Crystal)

5014 KD
(Rosemilk)

5014 BS
(Celeste Blue)



Dewdrops

This huggable collection of charming figurines sparkles with Swarovski crystal accents. Crystal dewdrops glisten on a leaf within Robin Spindler's design of a solitary daisy centered with a rose-colored gem. Our new Puppy, Baby Elephant, and Sleeping Kitten join this best-selling collection.



5085 DC
"Puppy Luv"
4"

5293 DC
"Luv Bunny"
3 1/2"

a Fenton moment

Enjoy Dewdrops

- Swarovski crystal accents
- Handcrafted in USA
- Handpainted and signed by the artist
- Perfect to give or to own



5074 DC
"Glamour Queen"
4"



5064 DC
"Catnap"
3 1/2" l.



5058 DC
"Pretty in Pink"
3 1/2"

0528 AS
15 Pc. Dewdrops
Assortment

FG195
Dewdrops Counter Sign
8 1/2" x 11" (no charge)



Bell Medley

The beauty of bells—appealing to the eye and pleasing to the ear, delightful to decorate with and enjoy. Each year, our gifted artists create a new array of handpainted designs to add to your bell collection.

0054 AS
18 Pc. Bell Medley
Assortment

0055 AS
6 Pc. Large Bell Assortment
(6"-6½")

0056 AS
6 Pc. Petite Bell Assortment
(3½"-4½")

FENTON
Handcrafted American Glass Artistry
www.fentonartglass.com

9268 K1
(Celeste Blue)

9764 LV
(Green Apple)

2768 K2
(Violet)

9266 K1
(Celeste Blue)

1774 H4
(Rose)

7665 I4
(Black)

2768 H5
(Opal)

7668 I4
(Black)

2967 H5
(Opal)

9763 LV
(Green Apple)

9684 K2
(Violet)

1777 H4
(Rose)



Ringholders

0064 AS
10 Pc. Ringholder
Assortment



9144 NZ
3"
(Rosemilk)



9144 JD
(Green Apple)



9144 KN
(Cobalt)

9144 OE
(Violet)

0059 AS
12 Pc. Hummingbird
Assortment

5066 SD
(Sunset)



5066 KJ
(Celeste Blue)

5066 CN
Hummingbird, 4 1/2"
(Amethyst)



5066 NG
(Rosemilk)



5066 JD
(Green Apple)



5066 OQ
(Violet)

9295 SX
(Sunset)



5290 JH
(Green Apple)



5290 K4
(Celeste Blue)



9295 WP
(Lilacs 'n' Roses)



1995 N3
Slipper, 6" l.
(Rosemilk)



Slippers

Prince Charming awaits with the royal slipper! The lure of the slipper transforms every girl into a princess, and each sparkling piece is truly one of a kind. An enchanting collectible and a charming gift. Be a princess—you deserve it!

0057 AS
12 Pc. Slipper
Assortment

Protect and store your valuable treasures with a colorful Fenton ringholder. Available in a rainbow of colors designed to complement any décor from the kitchen to the bath. A thoughtful gift for any age.

Hummingbirds

This colorful collection of adorable iridized birds seems to have all their wings in motion as they hover over your garden or back porch feeder.

Rose Bowls

Decorate and entertain with Fenton and enjoy the beauty and versatility of Fenton glass. Our functional rose bowls can be used as centerpieces with flowers. Add a votive candle to create an accent light, fill with potpourri to enhance a mood, surround with a floral wreath and set a pillar candle in the bowl—the possibilities are endless. Each rose bowl includes a votive candle.

7709 BS
Rose Bowl
w/stand, 8"
(Tulips on Rosemilk)

0065 AS
5 Pc. Rose Bowl
Assortment

 **F E N T O N**
Handcrafted American Glass Artistry
www.fentonartglass.com

5371 OE
Rose Bowl w/stand, 8"
(Violet)

7327 JQ
Rose Bowl, 5½" w.
(without stand)
(Pansy Morning on Green Apple)

Fenton Notes

The Art of the Glass Batch

The raw materials of glass, called "batch," consist of silica sand (71%), soda ash (15%) and lime (9%). The remaining 5% of the batch will be those ingredients which impart the desired color to the glass. The batch is mixed well before being melted in a furnace which reaches a temperature of 2500-2600 degrees Fahrenheit.

5371 SX
Rose Bowl w/stand, 8"
(Sunset)

5371 FM
Rose Bowl w/stand, 8"
(French Opalescent)

Sentiments Rose Bowls

Sentimental rose bowls capture a thought to treasure forever—the perfect pick-me-up gift for that special someone. Handcrafted and handpainted by the artisans of Fenton, each rose bowl bears a floral motif and special sentiment. Use as a votive (candle included) or a vase with flowers or potpourri.

0527 AS
8 Pc. Sentiments Rose Bowl Assortment



2759 JV
"Cherish yesterday...
dream tomorrow...
live today"
(Green Apple)



2759 PU
Rose Bowl, 3 1/4"
"Butterfly Kisses"
(French Opalescent)



deserving of a Fenton

- Handcrafted in USA
- Handpainted floral decoration
- Each rose bowl bears a special sentiment

Butterfly Kisses
In the garden of friendship, you are a rose.
Cherish yesterday... dream tomorrow... live today.
You are my sunshine!

FENTON
Handcrafted American Glass Artistry
www.fentonartglass.com

FG198
Rose Bowl
Counter Sign
(5" x 7", no charge)



2759 YZ
"In the garden
of friendship
you are a rose"
(Rosemilk)



2759 RK
"You are my sunshine!"
(Celeste Blue)

2077 FS
(French Opalescent)

2077 SD
(Sunset)

Two-way Votives

Create a mood with votives and rose bowls for any occasion or "just because." Each sparkles with color from a dancing flame.



2077 OE
(Violet)



2077 KN
(Cobalt)



2077 JH
Two-way Drapery Votive
4 1/2"
(Green Apple)



9596 K4
Two-way Votive, 4 1/2"
(Celeste Blue)

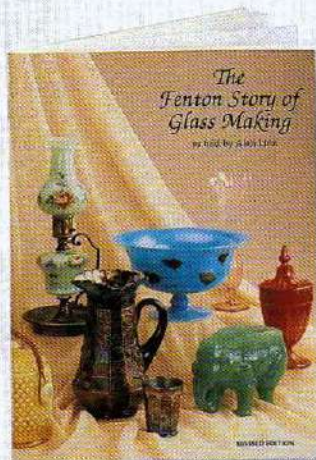


2077 NZ
(Rosemilk)

0061 AS
14 Pc.
Two-way Votive
Assortment
(tea light included)

Educational Materials

Build your Fenton business by educating your customers.
The more they know about Fenton, the more loyal they become.

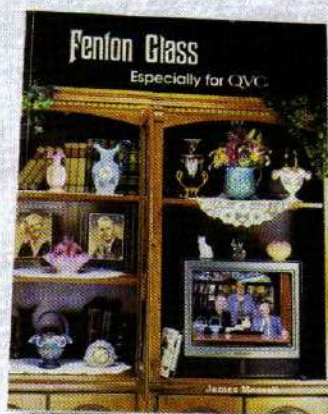


The Fenton Story of Glass Making

The Fenton history and glassmaking process along with color photography representing each decade.

FG078
The Fenton Story of Glass Making

FG947 (PB)
FG948 (HB)
Fenton Glass
Especially for QVC



0064 PK
13 Pc. Educational Materials
Prepack

FG209
The Joy of Collecting
Fenton Glass
VHS - 15 minutes



Video & DVD

Experience Fenton
Tour of the Fenton Factory

FG141
Consumer, VHS
22 minutes

FG146
Continuous Loop
VHS - 2 Hour

FG142
Consumer, DVD
22 minutes



Glass Messenger

Fenton's Quarterly Newsletter

Subscribe to the Glass Messenger and receive four colorful issues, a storage binder and the opportunity to purchase the 2004 Subscriber Exclusives. See page 8 for details!



FG086
Annual Subscription
(includes FREE binder with initial order)



FG119
Glass Messenger Postcard
(pack of 100)

FG208
Subscription Rack Card
(pack of 20)

FG170
Glass Messenger
Point of Purchase Display
(Includes: 1 current issue, 1 pack of FG208,
and 15 copies of a recent issue)



9908
Fenton Glass
First 25 Years (PB)

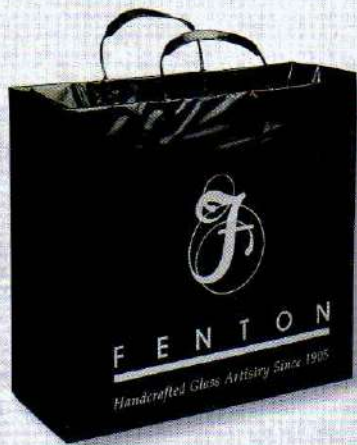
9982
Fenton Glass
Second 25 Years (PB)

9956
Fenton Glass
Third 25 Years (PB)

FG100
Fenton Glass
The 1980s Decade (PB)

FG911
Fenton Glass
The 1990s Decade (PB)

Point of Purchase Products



FG031
Fenton Logo Bags
(package of 30)



FG037
Logo Sign
Acrylic



8599 E3
Glass Fenton
Logo, Round, 3 1/2"



FG207
Fenton Logo Pen



FG147
Fenton Logo
Pocket Calculator



Fenton Logo T-Shirt
(black with silver logo)
FG064 - L
FG065 - XL
FG062 - XXL

Brochures



FG229
Entertaining with Fenton brochure
(50 pack, no charge)



9953
Artistry Brochure
(30 pack, no charge)

Catalog, Counter Signs & Postcards



FG960
2004 Catalog
(Retail)

FG961
2004 Price List
(Retail)



FG085
General Postcard
(Pack of 100)



9903
Basket Handler's
Sign
(no charge)



9972
Made in
USA Sign
(no charge)

FG193

Fenton Collector Essentials
(Includes one each of the following items:
9908, 9982, 9956, FG100, FG911, FG960,
Canvas Tote Bag, Fenton Family Tree Sheet,
FG141, Fenton Logo Pen and Notepad,
Historic River Cities Travel Guide, and a
one-year subscription to Glass Messenger)



Garden Club

Iridescent jewel-like glass figurines sparkle like dew upon blossoms... delightful creatures nestled among the flowers, gathered as if for a meeting... it's the Garden Club. Nature's beauty is captured forever in handcrafted glass by the artisans of Fenton.

0524 AS
15. Pc. Garden Club
Assortment

5066 OQ
Hummingbird, 4 1/2"
(Violet)

5296 KJ
Butterfly, 3"
(Celeste Blue)

5274 JD
Frog, 2 1/2"
(Green Apple)

5115 NC
Bird, 4"
(Rosemilk)

5215 SD
Squirrel, 2 1/4"
(Sunset)

5148 JW
Mouse, 3"
(Green Apple)

Baby Bunch

Sweet as sugar and twice as nice—these cheerful figurines are carefully handpainted in a floral chintz pattern created by Frances Burton. The "Bunch" is comprised of delightful baby animals just perfect for the young, or the young at heart.

0526 AS
12 pc. Baby Bunch Assortment

5058 NB
Elephant, Baby,
3 1/2"
(Rosemilk)

5293 QZ
Lop-eared Bunny, 3 1/2"
(Celeste Blue)

5064 ZQ
Sleeping Kitten, 3 1/2" l.
(Sunset)



Fenton Lamps

23"-25" Gone with the Wind Lamps

21" Petal Lamp



4200 BS
Tulips on
Rosemilk
(pg. 19)



9219 CC
Rose Embossed,
Cranberry
(pg. 29)

9219 OE
Rose
Embossed,
Violet
(pg. 17)



3304 CR
Hobnail, Cranberry
Opalescent
(pg. 30)

21" Handkerchief Lamp

1808 CR
Daisy and Fern
Optic,
Cranberry
Opalescent
(pg. 30)



18"-20" Student Lamps



1509 N7
Ivory Rose on
Cranberry
(pg. 28)



9218 CC
Rose Embossed,
Cranberry
(pg. 30)



6891 SB
Princess Roses on Sunset Overlay
(pg. 32)



6503 VQ
Grape Arbor
(pg. 16)



6508 WP
Lilacs and
Roses
(pg. 21)

5999 CR
Rib Optic, Cranberry Opalescent
(pg. 27)

Fenton Sales Representatives and Showrooms *

U.S. Representatives

EAST

drummers/Ivystone Group

Office and Showroom:

*301 Commerce Dr.

Exton, PA 19341

610-524-6400

800-327-9036

Fax: 610-524-6429

customerservice@digsales.com

and

*Rockwood Green Plaza

10134 Hull Street Rd., Suite C

Midlothian, VA 23112

804-745-0104

C. F. Archer Associates

2976 Persse Rd.

Lafayette, NY 13084

Phone/Fax: 315-677-3263

cfaa22@hotmail.com

*BrassSmith House

The Center

59 Middlesex Tpk., Showroom 108

Bedford, MA 01730

781-275-1815

800-777-5743 (New England Only)

Fax: 508-853-3903

brasssmith@charter.net

J. F. Hukill, Inc.

P.O. Box 23127

Lexington, KY 40523

859-576-2743

Fax: 859-263-5359

The Weikels

P.O. Box 4125

Greensboro, NC 27404-4125

336-292-0170

Fax: 336-299-7498

weikels@att.net

and

*Atlanta Gift Mart

230 Spring Street NW, Suite 1215

Atlanta, GA 30303

404-525-1184

Fax: 404-525-7214

Military Exchanges (World Wide)

Bird Marketing

P.O. Box 8365

Virginia Beach, VA 23450

757-463-8018

Fax: 757-463-8092

Contact: Bud Bird

jbetrock@birdmarketing.com

MIDWEST

Coyne's & Co.

Giff Connection, U.S.A.

7400 Boone Ave., North

Brooklyn Park, MN 55428

763-425-8666

800-336-8666

Fax: 763-425-1653

salesdpt@coynes.com

and

*Coyne's & Co.

U.M.A.G.A. Trade Center

Orange Suite 339

10301 Bren Road West

Minneapolis, MN 55343

(Use Phone Number Shown Above).

*Childers & Associates

Kansas City Merchandise Mart

6800 West 115 St., Suite 110

Overland Park, KS 66211

913-345-8844

800-341-6692

Fax: 913-345-8496

Office Phone/Fax: 913-338-2200

*Simpson Marketing, Inc.

1524 Merchandise Mart

Chicago, IL 60654

312-467-6277

800-621-5943

Fax: 312-467-0727

simpson-m@msn.com

John H. Evans Company

*Columbus Gift Mart

Showroom 238

1999 Westbelt Dr.

Columbus, OH 43228

800-344-9253

Phone/Fax: 614-876-3087

NORTHWEST

*Dick Gibson & Associates

6100 4th Ave. South, Suite 553

Seattle, WA 98108

206-762-1404

800-828-4608

Fax: 888-711-5005

dga@dickgibson.com

SOUTHWEST

Rohr, Inc.

107 Grandview Dr.

Mead, CO 80542

970-535-4866

800-845-2004

Fax: 970-535-4583

ghrohr@attglobal.net

Kingsley Sales & Marketing, Inc.

12069 E. Yucca Street

Scottsdale, AZ 85259

480-551-3434

800-843-7850

Fax: 480-551-3435

kingcon@msn.com

*SMI Associates (TX, AR, OK, LA)

1610 Trade Mart

Dallas, TX 75207

214-741-7424

800-541-7429

Fax: 214-741-7434

nfishsmi@aol.com

WEST

(Northern California)

Peddlers Too

1478 35th Ave.

San Francisco, CA 94122

415-564-4352

Fax: 415-682-7530

jimpedr2@sbcglobal.net

(Southern California)

The Newcombs, Inc.

P.O. Box 765

Pacific Palisades, CA 90272

800-245-5522

Fax: 310-454-4418

www.thenewcombs.com

and

*505 LA Mart

1933 S. Broadway

Los Angeles, CA 90007

Phone: 213-746-4545 Fax: 213-746-0098

Representatives Outside the U.S.A.

R. M. Hall Proprietary Ltd.

131 Keys Road

Moorabbin, Victoria

Australia 3189

Phone: 61-3-9555-2844

Fax: 61-3-9555-0144

info@rmhall.com.au



F E N T O N

Handcrafted American Glass Artistry

700 Elizabeth Street, Williamstown, West Virginia 26187
304-375-6122 FAX: 304-375-6459 www.fentonartglass.com