

2002 JUNE SUPPLEMENT

Centennial
COLLECTION
2000 - 2005

Each piece will be numbered and will bear the Centennial Collection logo and family member signature. Limited to Sales through 11/15/02.

heirloom memories

We continue the countdown to our 100th birthday in 2005 with the third installment of the Centennial Collection. Each year leading up to our centennial celebration, two family members will select a signature piece that reflects their personal collections of Fenton Art Glass. Our 2002 offering features two special selections from Bill Fenton's daughters, Christine and Shelley.

This exquisite Grape and Cable covered jar began its life as a tobacco jar reproduction in 1968. Christine began her collection of tobacco jars in the 70s but prefers to use them to hold biscuits for her six "kids" . . . five cats and one lovable dog. What better choice for her Centennial piece than Favrene, Queen of the Blues.



9188 FN
Tobacco Jar
Favrene, 7 1/2"
Christine Fenton



2743 VB
Vase, Autumn
Leaves on Coral, 7"
Shelley Fenton



F E N T O N

Handcrafted American Glass Artistry

Shelley had her heart set on Coral for her Centennial piece. Coral is seldom seen in glass because its ingredients are expensive and the production process is rather difficult. Pure gold and another rare ingredient cause an unpredictable reaction when heat strikes the piece as it is formed. Stacy Williams designed a beautiful vine of autumn leaves to drape the neck of this elegant piece, inspired by Shelley's love of fall colors.

The Connoisseur Collection

Fenton's commitment to the production of rare and unusual glass treatments



Dave Fetty's Favrene Feathers

Favrene glass is made with pure silver and is sensitive to the amount of heat it will bear before disappearing. It must also be reheated in a special atmosphere or it will lose its lovely silver blue sheen. When making a feathered piece of art glass, the craftsman reheats it 10 times. Each re-heating step is an opportunity for the Favrene color to fade away. Dave and his team carefully coordinate timing and skill to create the final work of art.



9931 KW
Vase, 8 1/2"
(Limit: 1250)

"Anna's Hummingbird" on Burmese

Kim Plauché designed a beautiful vine of pastel fuchsia dangling from the lip of this superb Burmese vase as a colorful "Anna's Hummingbird" enjoys the nectar from these blooming petals. Jan Saffell designed the new mould for this piece that is finished with a textured gold band surrounding the bottom of the vase.



2994 GH
Vase, 8 1/2"
(Limit: 2500)

"Song Sparrow" on Burmese

Pure gold and uranium combine to make historic Burmese glass, and Fenton is proud to be the sole producer of this lovely color blend. Deep melons provide an interesting canvas for Stacy Williams' design of a happy song sparrow resting in the glow of the summer sun as she watches over her nest. This is the largest handpainted lamp ever produced by Fenton.

5505 ZP
Lamp, large
Melon Gaze with
the Wind, 27 1/2"
(Limit: 950)



Coin Dot Ginger Jar

For more than 50 years, glass collectors have loved Fenton Coin Dot. Introduced in 1947, Fenton Coin Dot faithfully recreates a Victorian-style motif initially popularized by the greatest American glass companies of the 1880's. When these firms ceased to operate, the art was lost until Fenton Art Glass made it live once more! Rests on a black glass base and covered with a black glass lid.



6504 CR
Ginger Jar,
3 pc., 11"
(Limit: 1750)

"Swirled Berries" on Royal Purple

The world's very first glassblowers in Northern Italy developed Royal Purple during the first century BC. The deep purple color of royalty has attracted glass collectors since that time. Royal Purple glows with the richness of pure gold ruby and polished cobalt as the colors are fused together by the glassblower. Frances Burton's stylish floral design in shimmering blues and violets floats in a sea of swirled berries.



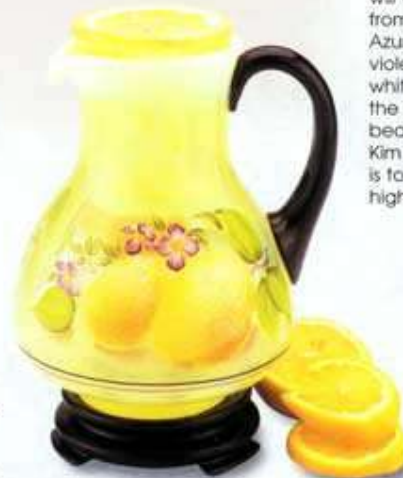
6531 FG
Basket, 10 1/2"
(Limit: 1750)



5549 EM
Vase, 9"
(Limit: 1750)

"Lemonade" on Topaz Opalescent

You can almost taste lemonade when looking at Robin Spindler's juicy lemons on Topaz Opalescent glass. Topaz Opalescent blossoms from a uranium rich formula that has an extra something to make it blush with white. As the blower fills the mould with opalescent glass, he turns the piece to create wispy striations that flow around the pitcher. The black handle and base give the pitcher art deco coloration. Inscribed with the signatures of 12 Fenton family members. Three piece water set includes base, pitcher and water glass.



1508 LJ
3 pc. Guest Set, 8 1/2"
(Limit: 1950)
"12 Fenton Family
Signatures"

"Evening Vine" on Mulberry

The exotic Mulberry glass color was first made in 1942 but discontinued after six months due to production difficulties. It is a challenge for the blower to hold the rich ruby color towards the top of the piece while displaying only blue at the bottom. Each piece will vary in color shading from deep Violet to Azure Blue. The deep violet center of the white petal becomes the focal point of this beautiful design by Kim Plauché, which is touched with 22k highlights.

Baroque Floral on Sunset Overlay and Sunset Stretch

Three new items in popular Sunset. The ever changing hues of sunset . . . from a peach pink blush to the beige-gold of twilight . . . all captured forever. Like a sunset, the shades vary and each handcrafted piece is unique.

Save 3%
0313 AS
14 Pc. Sunset
Assortment



3213 S6
Vase, 8 1/2"



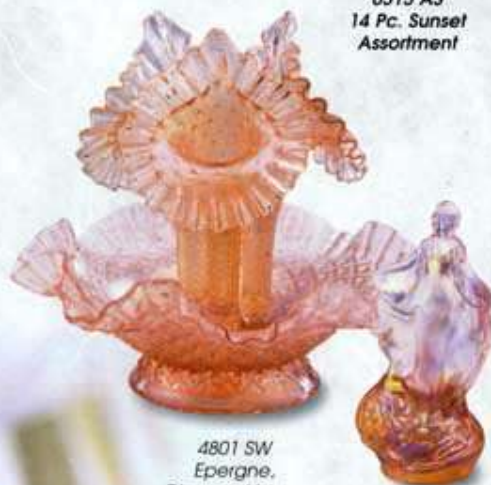
Retired



5934 S6
Basket, 7 1/2"



6080 S6
Wavecrest Box
w/ cover, 8 1/2"



4801 SW
Epergne,
Diamond Lace,
8"



5255 SX
Water Nymph,
6"



7379 S6
Basket, Footed
Diamond Optic, 9"



5158 S6
Elephant, 4"



7680 SX
Candy Box w/
Cover, Paneled
Grape, 8"



6795 S6
Lamp, Student,
18"



5751 SW
Vase, Paneled
Grape, 8 1/2"



2919 SW
Basket, 6"



7278 SW
Petite Bell,
Beauty, 4"

5301 SX
Perfume, Oval
Floral, 6"



9499 SX
Logo, 3 1/2", 5" w.



7705 S6
Cupped Bowl
w/Base, 5"

Point of Purchase Materials

62

9903
Basketry
Sign,
5" x 7"



9972
Made in
USA Flag
Sign
5" x 7"



8752 AT
Star
Paperweight,
4 1/2"

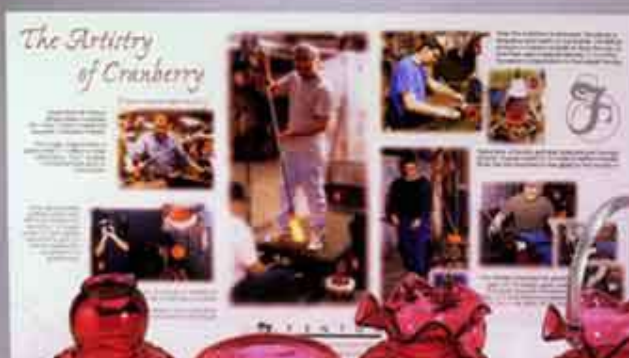
8751 AT
Heart
Paperweight,
4"



FG164
Fenton Sign Pack
includes set of
3 double sided
signs with
3 acrylic holders
(8 1/2" x 12 1/4")



FG167



*PG001 CC
Cranberry
Progressive Set

Includes:
-Poster and two
acrylic holders
-7 pc. glass
progressive set (6
plus basket)
-Cranberry double
sided sign and acrylic
holder (FG167)

* Available for
Rep Events only...
contact local rep or
Sue McCue at company.



FG170
Glass Messenger
Merchandiser
8 1/2" x 11"

-20 subscription brochures
-1 current issue
-1 special issue, along with 15
special issues to distribute
-acrylic display unit



FG092
Subscription
Brochure
(pack of 10)

FG173



FG176



FG177



FG175

FG174

Color
Counter cards
w/easel backs
(8 1/2" x 11")

Opalescent Coin Dot

Leading colors for today - Willow Green, Blue Topaz and Violet Opalescent - are featured in this historic art glass design. The Coin Dot design has remained popular with Fenton collectors for more than half a century.

Save 3%
0314 AS
9 Pc. Opalescent
Coin Dot
Assortment



2435 EJ
Basket, 9"

2460 EJ
Vase, 8 1/2"

2463 EJ
Vase, 5"



2435 JY
Basket, 9"

2460 JY
Vase, 8 1/2"

2463 JY
Vase, 5"



2101 EJ
Lamp,
Student, 18"



2102 GR
Lamp,
Student, 18"



2460 GR
Vase, 8 1/2"

2463 GR
Vase, 5"

2435 GR
Basket, 9"



2101 JY
Lamp,
Student, 18"

Entertain with Fenton!

Functional pieces for year-round entertaining in versatile home decor colors. Use the cake and candle plates to celebrate a special occasion or a pair of candlesticks to set the mood for a romantic evening.

Save 3%
0315 AS
14 Pc. Entertaining
Assortment



4552 OE
Leaf Cakeplate,
12" w.

1906 OE
Salt & Pepper,
Daisy &
Button, 3 1/2"



7788 OE
Candleplate,
6 1/2" w.



1903 OE
Cream &
Sugar set,
Daisy &
Button, 3"



1928 OE
Bowl, Daisy &
Button, 11" w.



1970 OE
Candlesticks, pr.
Daisy & Button, 5"



1970 FS
Candlesticks, pr.
Daisy & Button,
5"



1928 FM
Bowl, Daisy
& Button,
11" w.



7788 FM
Candleplate,
6 1/2" w.



4552 FM
Leaf Cakeplate,
12" w.



1906 FS
Salt & Pepper, Daisy
& Button, 3 1/2"



1903 FS
Cream & Sugar set,
Daisy & Button, 3"

Inspirations

The words "Those who love the Lord shine as the sun" float through the sun drenched sky as a lone bumblebee makes its way through a field of smiling daisies. Stacy Williams' uplifting design is sure to warm the heart and soul.

Save 3%
0316 AS
11 Pc. Inspirations
Assortment

*"Those who love
the Lord
shine as the sun"*

7241 Q4
Rosebowl/
Vase, 3"

5162 Q4
Bunny, 3"

7612 Q4
Basket,
Footed, 10"

5163 Q4
Bird, 4"

9474 Q4
Bell, 6 1/2"

5936 H9
Basket, 9"

Halloween

Fenton brings you four new selections for one of the top selling decorating holidays. A scary black cat, spooky ghost and magical witch go bump in the night in this charming collection of Halloween favorites. The coordinating basket is wonderful when filled with trick or treat candy.

Save 3%
0317 AS
8 Pc. Halloween
Assortment

5278 H1
Gaspar the
Ghost, 5 1/2"

5291 HN
Scaredy Cat,
4 1/2"

5284 H6
Grenelda the
Witch, 6 1/2"



F E N T O N

Handcrafted American Glass Artistry

The Fenton Art Glass Company, 700 Elizabeth Street, Williamstown, WV 26187 304-375-6122 FAX: 304-375-6459 www.fentonartglass.com