

Spring Limited Editions

Early Spring 2001

Legendary Fashions

This elegant new line centers around authentic period fashions influenced by the decorative arts of the 19th and 20th centuries. By utilizing the combined talents of freelance sculptor Linda Higdon and Fenton designer Martha Reynolds, we were able to capture the pure essence of these captivating fashions from distinctive eras. The oversized violet skirt of the 1870 Victorian Walking Dress has a satin finish that is enhanced with a flower brooch attached to a long chain - authentic to that particular period. The 1910 Gibson Girl is outfitted in an emerald green skirt with matching striped, lace-cuffed blouse and jabot. Envision the dance moves of the Charleston when admiring the Flapper from 1925. An uplifting pink chiffon skirt shines in contrast to the sanded top draped with a knotted strand of pearls.



5047 GZ
Gibson Girl, 8"
Limit: 4750

55231
Mirror,
12 1/2"



5046 VA
Victorian Lady,
8 1/2"
Limit: 4750

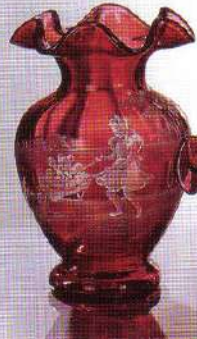
Sculptor
Linda Higdon



Each dress will be numbered and limited to 4750 pieces. A wooden stand, bearing a brass plaque indicating the name of the design along with the year in which it was worn, will accompany each piece. A booklet will also be included that tells the story behind each fashion period.

Save 3%
0401 PK
7 Pc. Legendary Fashions Prepack

Save 3%
0402 AS
4 Pc. Mary Gregory
Assortment



1573 Q8
Vase, 7"
Limit: 2350



2983 DM
Basket, 8 1/2"
Limit: 2350



1616 Q2
Vase, 10"
Limit: 2350



3200 DQ
Tumble Up, 8"
Limit: 2350

Mary Gregory

Cranberry glass, combined with the distinctive Mary Gregory style of design, remains a highly collectible theme. Martha Reynolds developed two new designs that truly capture the joy of spring through the eyes of a child. The delightful "Tea Party" provides a beautiful portrait for the large vase. "Along for the Ride" depicts a bonnet-clad girl pushing her beloved teddy bear in a flower-filled wheelbarrow on the small crimped vase. The 2001 collection also includes the popular "Bird Watching" and "Swinging" designs.



F E N T O N
Handcrafted Glass Artistry Since 1905

**Numbered &
Limited to
Sales Through
3/31/01**



2785 OF
Perfume,
Heart, 5"



6875 EW
Perfume,
Feather w/
Floral Stopper,
6 1/2"



2906 ZY
Perfume, Round w/
Open Stopper, 6"

Perfumes

A collection of three uniquely different designs appealing to a variety of tastes. Iridized Violet, with the addition of iced accents, gives Robin Spindler's pattern of daisy petals an elegant allure. Willow Green Opalescent was used in the reproduction of a Devilbiss bottle produced during the 1940's that is topped with a feather stopper designed by Jon Saffell in 1996. 22k gold enhances Robin's leaf design that encircles this delicate bottle. Martha Reynold's stylized dragonflies floating through an open meadow are perfect for the round perfume in Pink Chiffon Overlay.

Save 3%
0403 AS
**6 Pc. Perfume
Assortment**



Daisy Lane

Dancing daisy petals are the perfect complement to French Opalescent. Kim Plauché's design of cheery daisies and leaves with violet accents peer through a trellis optic as blades of grass sway with the gentle breeze. A Pink Chiffon ring creates a soft touch to this delicate spring collection. A beautiful coordinate to our Pink Chiffon color statement.



5169 UC
Duckling,
3 1/2"

1147 UC
Basket, 8 1/2"



1145 UC
Bell, 6 1/2"

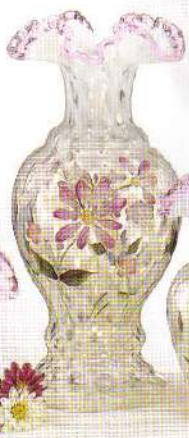


5151 UC
Bear, 3 1/2"

Daisy Lane, Pink Chiffon
and Spring Splendor on
Pink Chiffon display
beautifully together.



4775 UC
Basket, 7"



4752 UC
Vase, 9"



4757 UC
Vase, 5"



5065 UC
Cat, 5"



6850 UC
Lamp,
18"

Pink Chiffon Opalescent

Fenton is proud to introduce a new color statement for our spring collection - Pink Chiffon Opalescent. This unique color is achieved by adding erbium and bone ash to the glass formula to create an exceptional opalescent shade of pink that remains true to color in different shades of lighting. The hobnail shapes are among the most historic and loved of all Fenton designs.

3688 YS
Covered Candy,
Hobnail, 7 1/4"

3752 YS
Vase, Hobnail,
11"

9596 YS
Votive, 2-way, 4 1/2"

3669 YS
Vase, 4 1/2"

Save 3%
0404 AS
28 Pc. Daisy Lane/
Pink Chiffon/ Spring
Splendor Assortment

3357 YS
Basket,
Hobnail,
9"

3366 YS
Pitcher, Hobnail,
5 1/2"



3303 YS
Lamp, 25"

3992 YS
Boot, 4 1/4"

3368 YS
Bell, Hobnail, 5 1/2"

9144 PS
Ringholder, 3"

The blooming of the perennial crocus is the first indication that spring is just around the corner. Martha Reynolds captured the simplicity of this delicate field of white spring flowers accented with a beige checkboard in the background. Iridescent paint, applied with an airbrush, creates a gauze effect that is reminiscent of morning dew. This delightful new treatment has a texture you can feel!

5905 X9
Melon Box, 6 1/2"
Family Signature Series
Inscribed with the
signature of
Shelley Fenton.

Spring
Splendor on
Pink
Chiffon

7568 X9
Bell, Legacy, 6 1/2"

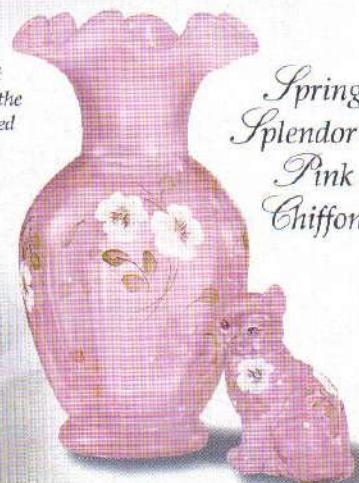
5931 X9
Basket,
Ribbed, 9"

5136 X9
Elephant,
3 1/2"

6808 X9
Flower
Trinket, 4"

7386 X9
Vase, 9"

5165 X9
Cat,
3 3/4"



Trinket Boxes

A diverse assortment of functional shapes and colors to coordinate with today's home decor.

0405 AS 12 Pc. Trinket Box Assortment



9486 PS
Templebells, 5"
(Pink Chiffon)



6808 A9
Flower, 4"
(Cobalt Decorated)



6845 GY
Thistle, 4 1/2"
(Willow Green)



6845 OE
Thistle, 4 1/2"
(Violet)



4106 EG
Double Heart, 5"
(Opal Decorated)



3969 GY
Hobnail, 3 1/2"
(Willow Green)



9589 S4
Ribbed Oval, 5"
(Opal Decorated)



9486 OE
Templebells, 5"
(Violet)

Slippers

The Imperial slipper designed by Jon Saffell joins this fashionable group of enchanting collectibles. Each handpainted piece is uniquely decorated to make it a one of a kind gift. The lure of the magical slipper is alive in the 21st century!

0406 AS 14 Pc. Slipper Assortment



Note the unusual swan design on the side of each Imperial slipper.

8595 EX
Imperial
Slipper, 6 1/2"
(Willow Green)

8595 H7
(Pink Chiffon)

8595 C4
(Violet)

1995 KN
(Cobalt)



1995 V1
Queen Slipper, 6"
(Violet Decorated)

1995 GR
(Willow Green)

1995 PS
(Pink Chiffon)

9591 TN
(Cobalt
Decorated)



9591 CT
(Rose Decorated)

9591 E6
(Willow Green Decorated)

9591 QM
Princess Slipper, 5"
(Violet Decorated)

Late Spring 2001

Hugs for You

Decorative bears and kittens bring a smile to your face. These adorable figurines are handpainted with whimsical floral patterns sporting bees, dragonflies and butterflies. Happy phrases on the back bring warmth and cheer to friends and family. A great way to lift one's spirits!

Each special gift comes in a pretty gift box that features the little animal on a satin pillow for a luxurious presentation.

"Hugs for You are hand-made with care, bringing you a smile to share."

0407 PK
21 Pc.
"Hugs for You"
Prepack

Counter Card
FG135

The back of each kitten and baby bear features a cute message in sparkling gold.



Smiles
for
You!

5251 NJ
Baby Bear,
3" (Violet)

Back of
Violet
Bear



5251 N5
(Pink)

Friends
Forever



5251 NE
(Ice Blue)

You're
Special!



5251 NU
(Willow Green)

Friends
Forever



5365 NT
Kitten, 3"
(Violet)

You're
Special!

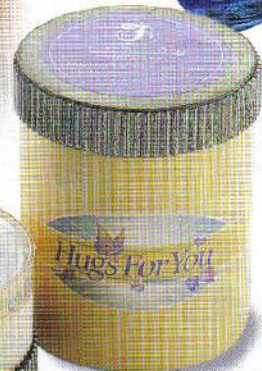


You're
the
BEST!

5365 NQ
Kitten, 3"
(Willow Green)

5365 NB
Kitten, 3"
(Pink)

Smiles
for
You!



5365 ND
Kitten, 3" (Ice Blue)

Butterfly
Kisses



F E N T O N
Handcrafted Glass Artistry Since 1905



8405 WQ
Beaded, 6"
(Willow Green)



5204 AY
Atlantis, 5"
(Violet)



8405 YH
Beaded, 6"
(Pink)



5204 AF
(Willow Green)



1167 OQ
Hobnail, 3 pc. 9"
(Violet w/ Milk Glass)

Fairy Lights

The springtime colors of Willow Green, Violet and Pink Chiffon radiate a warm glow in our assortment of fairy lights. Jon Saffell created a new Atlantis mould that is the perfect companion to the popular Atlantis Vase.

0408 AS
5 Pc. Fairy Light
Assortment

Springtime Baskets

A varied collection of baskets in vibrant spring colors. Use as beautiful centerpieces to display Easter eggs or garden bouquets.



6821 YS
Basket, Rose, 6"
(Pink Chiffon)



9237 OQ
Basket, Rose, 8"
(Violet)



6821 GY
(Willow Green)



3638 YS
Basket, Melon
Hobnail, 8 1/2"
(Pink Chiffon)



9237 GY
Basket, Rose, 8"
(Willow Green)



6821 OQ
Basket, Rose, 6"
(Violet)



6832 OQ
(Violet)



6832 GY
Basket, Hobnail,
4 1/4" (Willow Green)



6832 YS
(Pink Chiffon)

Save 3%
0409 AS
12 Pc. Spring Basket
Assortment

Folk Art Animals

Colorful accent pieces to brighten any dining or kitchen area. Once again, Robin Spindler has developed some exceptional designs for our latest edition of the Folk Art collection. Solid black glass heightens the provincial gold feathers and raspberry comb of the vibrant roosters. New for Spring 2001 is the covered lamb box purchased from The L.G. Wright Company in 1999.

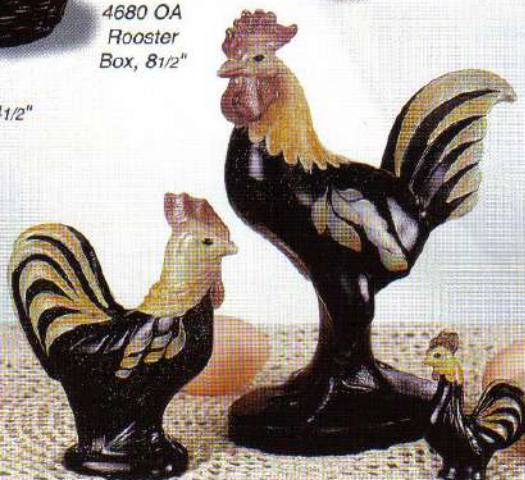


6483 OA
Rooster Box, 4 1/2"

4680 OA
Rooster
Box, 8 1/2"

4683 OH
Bunny Box, 7"
Last day to order:
3/31/01

Save 3%
0410 AS
8 Pc. Folk Art
Assortment



5292 OA
Rooster, 5 1/2"

5257 OA
Rooster, 8 1/2"

5265 OA
Rooster, 2 3/4"



6883 OY
Bunny
Egg Cup,
3 1/2"
Last day to order:
3/31/01



4580 OM
Lamb Box,
4 1/2"
Last day to
order: 3/31/01



5292 OE
Rooster, 5 1/2"
(Violet)

5163 ON
Bird, 4"
(Lavender Petals)



5162 X9
Bunny, 3"
(Spring Splendor)

5169 ZI
Duckling, 3 1/2"
(Willow Green
Decorated)



5265 GR
(Willow Green)



5292 GR
Rooster, 5 1/2"
(Willow Green)

0413 AS
23 Pc. Spring
Figurine
Assortment

Spring Figurines

An assortment of animals in cool spring colors to tickle your fancy and revive the senses. Nice companion pieces for Easter decorating.



5275 PS
(Pink Chiffon)

5265 OE
Rooster, 2 3/4"
(Violet)

5275 GR
Bunny, 2 3/4"
(Willow Green)

5265 PS
(Pink Chiffon)

Daisy Butterfly on Lotus Mist Burmese

Introduced by Fenton in 2000, the soft greens of Lotus Mist Burmese quickly found fans among our collectors. As its popularity continues to soar, we present our second installment of this unique color. Kim Plauché's pastel daisies and uplifting butterfly further beautifies this highly collectible treatment.

Save 3%
0417 AS
6 Pc. Lotus Mist
Assortment



6531 ES
Basket, 10"
Limit: 2750



6548 ES
Vase, 10"
Limit: 2750



5065 ES
Cat, 5"
Limit: 4750



5146 J7
Egg, 3 3/4"
(Violet)



5146 J6
(Pink Chiffon)

Each Limited to
3000 Pieces

5146 J3
(French
Opalescent)



5146 J4
(Willow Green)



5146 J2
(Black)



5146 J5
(Cobalt)



5146 J8
(Lotus Mist)

Collectible Eggs

Original in style while depicting the individual freedom of each design, Fenton's Collectible Eggs for 2001 are like no other. An aquatic theme is captured on three exclusive eggs featuring seahorses, turtles and a school of fish while an array of fruits and florals are delicately illustrated on the other eggs - all with 22k gold highlights. Each handpainted egg is signed by the artist and limited to 3000 pieces.

Save 3%
0418 AS
14 Pc. Collectible Egg
Assortment

The Fenton Art Glass Company
700 Elizabeth Street, Williamstown, WV 26187
(304) 375-6122, FAX (304) 375-6459, www.fentonartglass.com

Models: Brice and Donna Fenton, daughter and wife of Don Fenton, granddaughter and daughter-in-law of Bill Fenton.



F E N T O N

Handcrafted Glass Artistry Since 1905