

# Fenton

## 1981-1982

THERE ARE FENTON DEALERS IN PRACTICALLY EVERY TOWN AND SHOPPING CENTER THROUGHOUT THE COUNTRY. WHEN YOU FIND ITEMS IN THIS CATALOG THAT YOU WANT TO BUY, JUST VISIT ONE OF OUR DEALERS. THEY WILL BE MOST PLEASED TO ACQUIRE YOUR SELECTION FOR YOU IF THEY DON'T HAPPEN TO HAVE IT IN STOCK.

EVEN THOUGH THIS IS AN EXACT DUPLICATE OF OUR REGULAR DEALER CATALOG. IT IS INTENDED AS A CONSUMER BOOKLET ONLY. THIS IS NOT AN OFFER FOR DEALERSHIP.





# The Fenton Art Glass Company



OFFICES AND FACTORY: WILLIAMSTOWN, WEST VIRGINIA 26187

To our valued Fenton customers:

Thank you again for helping us to establish new sales records during 1980. Our partnership with you has grown each year and we're proud to have the very best people in America selling Fenton glass.

Your sales of our products have inspired us to develop 180 new pieces that will help your Fenton business to even greater heights in 1981 and '82.

We often become personally attached to many of the beautiful pieces of glass that we make. Maybe it's because we have helped design them. Maybe the attachment comes as we watch the craftsman's hands bringing into reality a new design. For us each piece has its own personality.

At no time have these feelings been more true than now, as we bring to you the best selection ever of new colors, pieces and patterns for '81. We are both proud and excited about the new Fenton line.

In the past we have invited each of you to come visit us and a great many of you have done so. But we especially would like you to come now and see for yourself just why Fenton continues to grow to be your best buy, and therefore your best sell, in fine handcrafted art glass.

Many thanks for making Fenton the leader. Have a great year. Come visit us if you can. But by all means, if you can't, try to see our complete line at your nearest regional show or showroom.

Sincerely,

*Bill Fenton*

Bill Fenton  
President

*Don Fenton*

Don Fenton  
Sales Manager

*Pat Clark*

Pat Clark  
Special Markets Manager



## CAN YOU BELIEVE?

The 9137 CY 7" Basket shown on the left is the top selling crystal piece in the entire line and we left it out of the catalog! It should have been with the rest of this fast selling crystal grouping on pages 65 through 67. Be sure to include this item with your order for Fenton Crystal. Refer to order blank—page 3, column 2.



# Fenton

Our new catalog will aid you in placing orders in between calls by your Fenton salesman. This will be your catalog for the next two years. Supplements announcing the introduction of new items will be sent to you in June and January during 1981 and 1982. You will notice that the order blank/price list is printed in the same sequence as the different lines appear in the catalog. We hope this will make your ordering easier.



## COLOR CODE

AS—Assortment  
BA—Blue Satin  
BD—Blue Dogwood (Handpainted)  
BK—Ebony  
BL—Blue Roses (Handpainted)  
BO—Blue Opalescent  
BQ—Blue Roses on Custard (Handpainted)  
BR—Burmese  
CD—Daisies on Cameo (Handpainted)  
CN—Carnival  
CO—Cameo Opalescent  
CQ—Chickadees on Cameo (Handpainted)  
CR—Cranberry  
CU—Custard Satin  
CY—Crystal  
DC—Daisies on Custard (Handpainted)  
DR—Chocolate Roses (Handpainted)  
DV—Violets in the Snow (Handpainted)  
FN—Mother's Day 1981—Gentle Fawn  
FO—French Opalescent  
HI—Ivory on Cameo Satin (Handpainted)

HU—Blue on Cameo Satin (Handpainted)  
LC—Log Cabin on Custard (Handpainted)  
MI—Milk Glass  
MV—Mountain Reflections (Handpainted)  
PD—Pink Dogwood on Ebony (Handpainted)  
PE—Silver Poppies on Ebony (Handpainted)  
PY—Pink Blossom (Handpainted)  
RC—Roses on Custard (Handpainted)  
RD—Roses on Ruby (Handpainted)  
RU—Ruby  
SC—Silver Crest  
SF—Strawberries on French Opalescent (Handpainted)  
SS—Sunset (Handpainted)  
TB—Antique Blue (Handpainted)  
TN—Antique Brown (Handpainted)  
VB—Velva Blue  
VE—Crystal Velvet  
VR—Velva Rose  
WS—White Satin  
YB—Butterflies on Cameo (Handpainted)

## TABLE OF CONTENTS

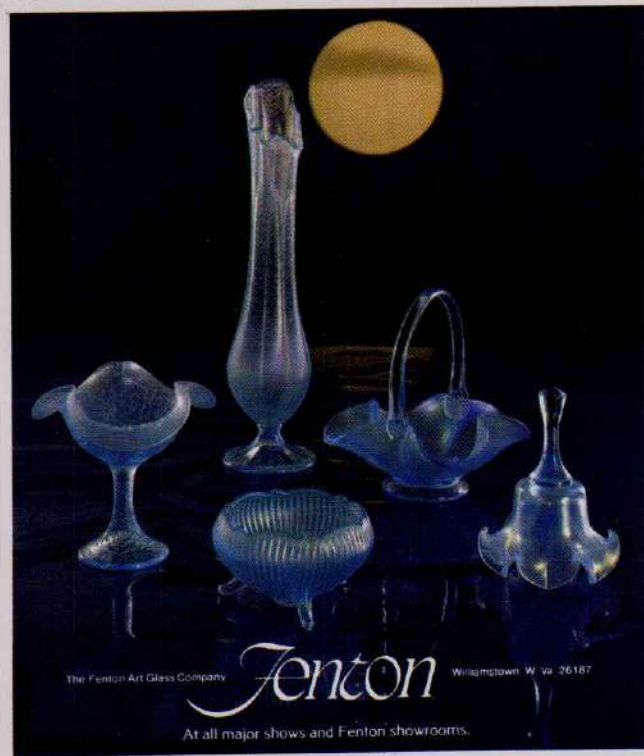
Advertising	1
Milk Hobnail	2-11
Ruby	12-13
Blue Opalescent	14-15
Cameo Opalescent	16-17
French Opalescent	18
Strawberries on	
French Opalescent	19
Crystal Velvet	20-24
Currier and Ives	24-25
Blue Satin	26-27
Custard Satin	28-29
Roses on Custard	30-31
Roses on Ruby	32
Blue Roses	33-35
Chocolate Roses	36-38
Velva Blue	39-41
Velva Rose	42-43
Pink Blossom	44-45
Pink Dogwood on	
Burmese	46-47
Burmese Lamps	48
Oriental Vases	49
Ebony	50
Silver Poppies	
on Ebony	51
Daisies on Custard	52-53
Log Cabin	54-55
Miniature Collection	56-57
Silver Crest	58-60
Violets in the Snow	61
Daisies in Cameo	62-64
Crystal	65-67
Blue Dogwood	68-70
Mothers Day	71
Sunset	72-73
Chickadees on Cameo	
Lamps	74-75
Yellow Butterflies and	
Bamboo on Cameo	
Lamps	76
Special Assortments	77
Mountain Reflections	78-79
Carnival	80

Handmade...in the age-old manner...

### Moonlight...soft music... beautiful memories captured in Velva Blue.

Inspired by the popularity of 1980's special-issue Velva Rose, the Fenton artists have created this new vision of elegance and romance. Velva Blue is an

iridescent stretch glass treatment, available in these and other pieces of fine art glass from Fenton.



The Fenton Art Glass Company

Fenton

Williamstown, W. Va. 26187

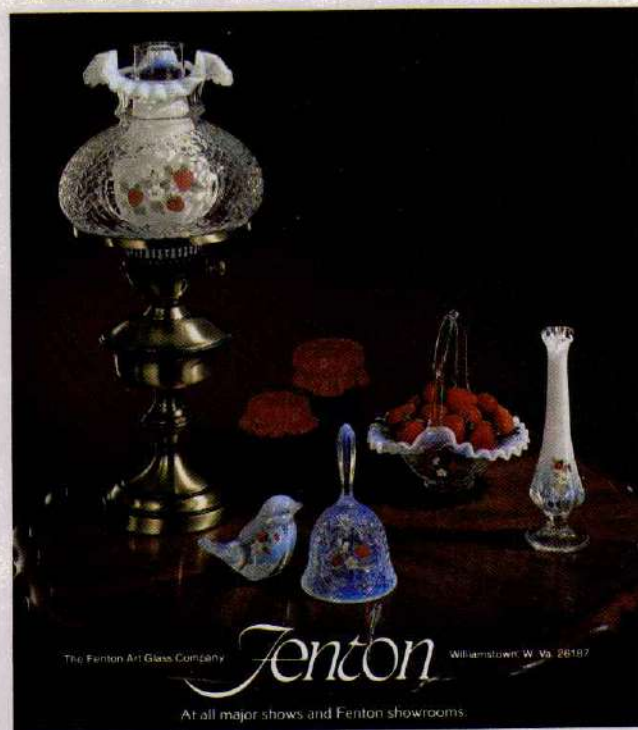
At all major shows and Fenton showrooms.

### Strawberries on French Opalescent. A delicious confection from Fenton.

The creamy richness of French Opalescent... crystal edged with white, created by a special glassmaking process. Decorated with luscious strawberries, painted by hand. Each piece of

this new Fenton line is proudly signed by the artist.

An appealing combination for every taste... from the garden of fine art glass at Fenton.



The Fenton Art Glass Company

Fenton

Williamstown, W. Va. 26187

At all major shows and Fenton showrooms.



FASCINATING

*Fenton*



Basic white is always right. A lovely gift because it answers the question, "But will this color fit?"

No other glass pattern has met with as much acceptance over such a long period of years . . . and its popularity shows no sign of diminishing.

*On order blank—page 1.*



3808 MI  
22" GONE WITH THE WIND LAMP



3667 MI  
BELL



3628 MI  
COMFORT



3736 MI  
6½" BASKET





## Hobnail Accents



3752 MI  
11" VASE



3850 MI  
5" VASE



3954 MI  
7" VASE



3701 MI  
4 PC. EPERGNE SET



3610 MI  
3 PC. ASH TRAY SET



# Vases

Graceful hand swung white floral vases designed to hold flowers as well as to provide contrast emphasis for richly colored backgrounds . . . though similar in shape, the relentless tug of gravity signatures each vase a little differently from all others.

*On order blank—page 1.*



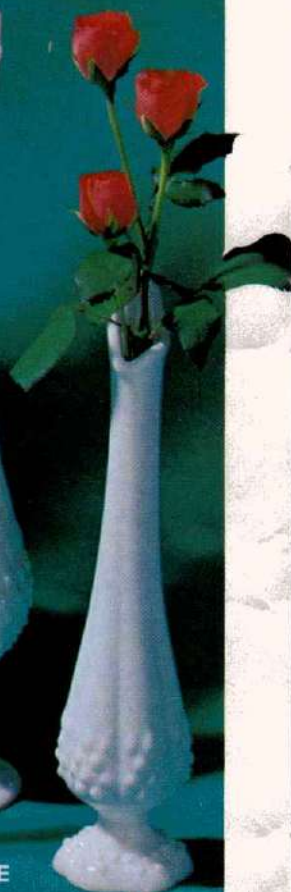
3755 MI  
TALL HANDKERCHIEF  
VASE



3756 MI  
BUD VASE



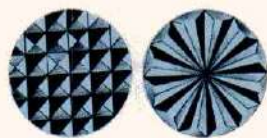
3753 MI  
FOOTED VASE



3950 MI  
BUD VASE

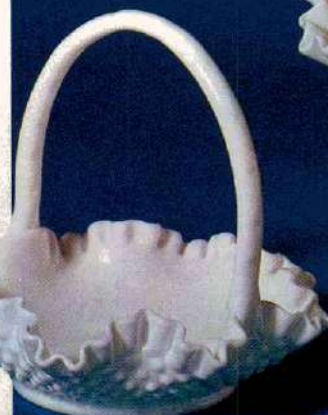


# Baskets



## The traditional Hallmark of Fenton handmade glass.

An interesting selling point is the individual "handler's mark" which each basket bears. The highly skilled handler attaches a glowing gob of molten glass to the piece and deftly works it to a graceful arch. The stamp with which he attaches the handle bears his personal mark. The design of the mark is his alone. Thus each Fenton basket is personally signed by a craftsman, who in doing so says with pride, "This basket is right."



3736 MI  
6 1/2" BASKET



3734 MI  
12" BASKET



# Fenton



3830 MI  
10" BASKET



3837 MI  
7" BASKET



3834 MI  
4 1/2" BASKET

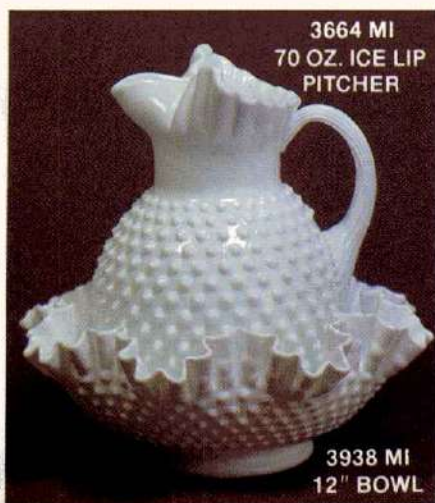


3638 MI  
8 1/2" BASKET



3735 MI  
5 1/2" BASKET





3664 MI  
70 OZ. ICE LIP  
PITCHER

3938 MI  
12" BOWL

# Hobnail

Traditional white for serving accessories . . . Readily merchandised in groupings, such as salt and peppers, sugar and creams etc. The interrelated nature of all these pieces promotes their sale in multiple units.

. . . It's Beauty Is Timeless



3624 MI  
10 1/2" BOWL



3938 MI  
12" BOWL



3635 MI  
3 TOED BOWL



3924 MI  
9" BOWL

3794 MI  
2 TIER TIDBIT



3803 MI  
3 PC. MAYONNAISE SET



3633 MI  
OVAL NUT DISH



3917 MI  
SUGAR & CREAM  
SET



3607 MI  
HANDLED RELISH



3664 MI  
70 OZ. ICE LIP PITCHER

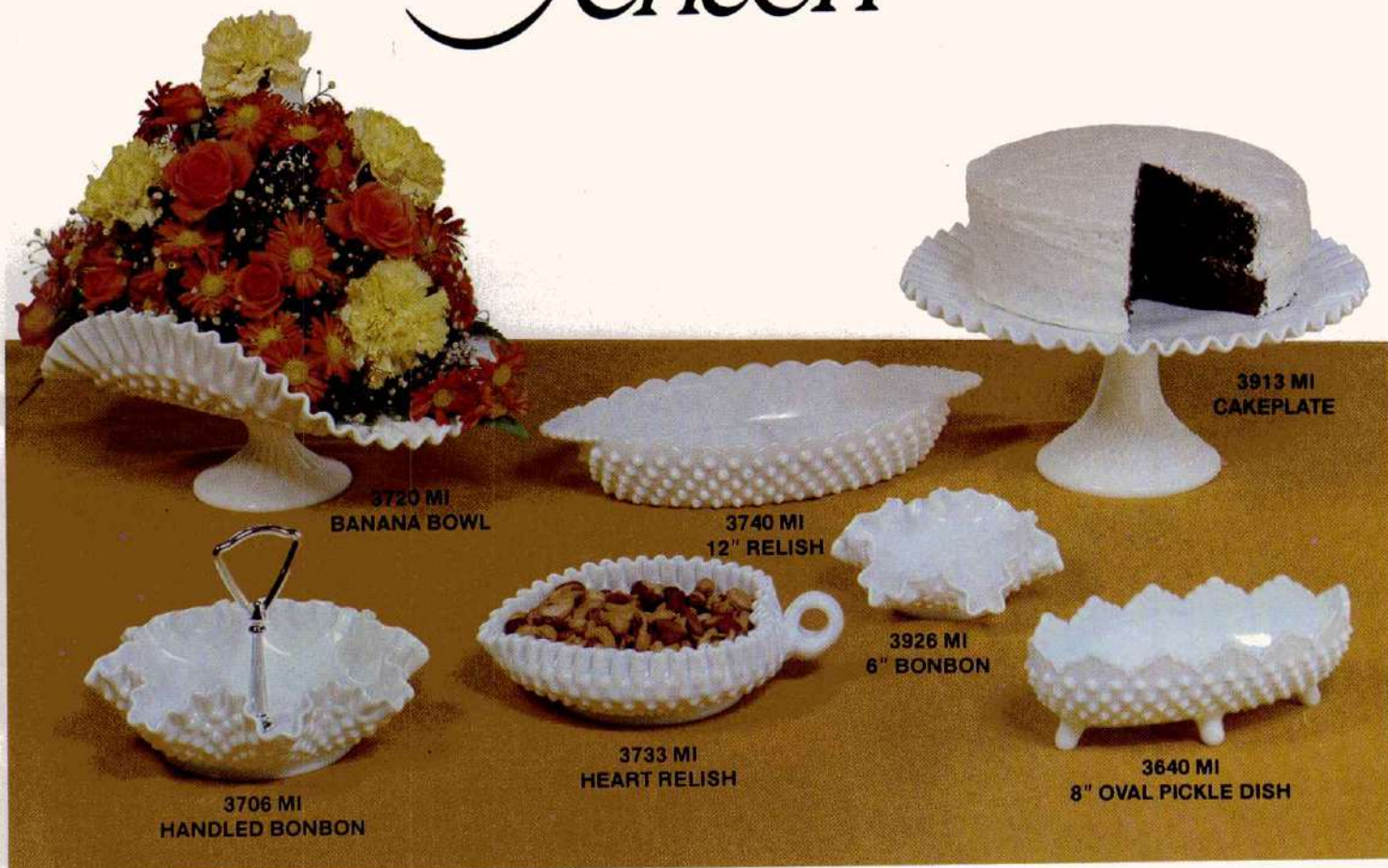


3806 MI  
SALT & PEPPER SET





# Fenton





# Fenton Candy Boxes

Why do we have so many milk glass candy boxes? Simply because they sell exceptionally well. They're pleasing as gifts, they're pleasing as decorative contrasts and they're pleasing as profit providers.



3886 MI



3784 MI



3786 MI



3600 MI



3700 MI



3802 MI



A touch of white  
to make sales bright



3778 MI  
ASH TRAY, CHIP 'N DIP,  
CANDLE BOWL



3608 MI  
FAIRY LIGHT



3804 MI  
3 PC. FAIRY LIGHT



3854 MI  
4 1/2" VASE



3628 MI  
FOOTED COMPORT



3853 MI  
3" VASE



3795 MI  
TOOTHPICK HOLDER



3952 MI  
4" VASE



3667 MI  
BELL



3995 MI  
SLIPPER



# Hobnail Lamps



"When Quality is the Question"

*On order blank - page 1.*



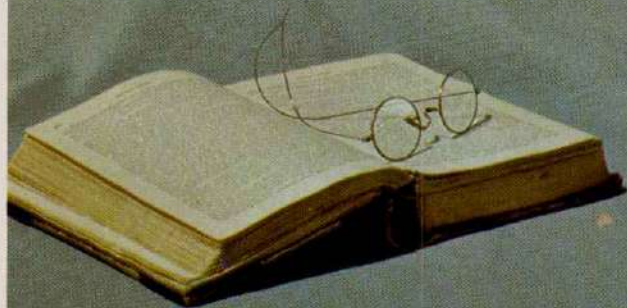
3808 MI  
22" GONE WITH THE WIND LAMP



3807 MI  
19" STUDENT LAMP

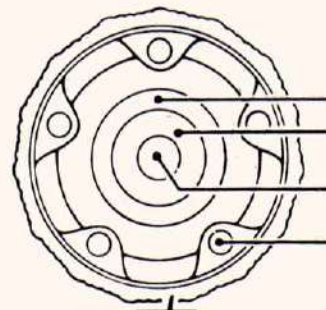


3907 CR  
26" CRANBERRY LAMP





# Candle Holders and Arrangements



3" Candle  
2" Candle  
1" Candle  
Tapers

A boutique corner featuring creative candle displays and candle arrangements can bring valuable plus sales in accessories as well as sound sales of candle holders.

*On order blank—page 1.*



3872 MI  
CANDLE BOWL



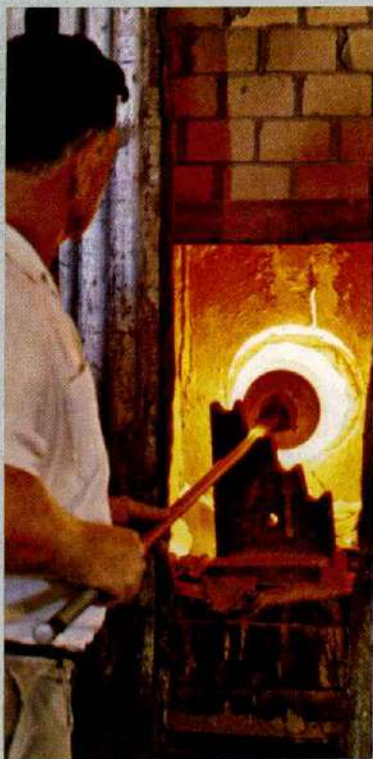
3674 MI

3624 MI  
10 1/2" BOWL

3674 MI  
6" CANDLEHOLDER

3974 MI  
CANDLEHOLDER





# Fenton

The penetrating Fenton ruby hue is attained by "warming in" the finished piece in an inferno like "glory hole". This process is called "striking", so it is quite appropriate to speak of Fenton Ruby as a "striking beauty".

*On order blank—page 1, column 2.*

**3706 RU  
HANDLED BONBON**



**3716 RU  
8" BONBON**



**3756 RU  
BUD VASE**



**3608 RU  
FAIRY LIGHT**



**3854 RU  
4½" VASE**



**9101 RU  
24" GONE WITH  
THE WIND LAMP  
POPPY PATTERN**





# Ruby

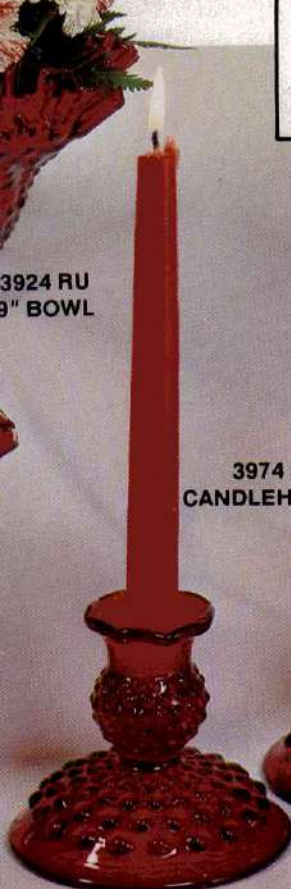
Traditionally the top selling non-opaque color. Unusually effective when displayed with milk glass pieces for Valentine's Day and Christmas sales . . . and don't forget to suggest it for 40th Anniversaries.



3924 RU  
9" BOWL



3628 RU  
FOOTED COMFORT



3974 RU  
CANDLEHOLDER



3837 RU  
7" BASKET



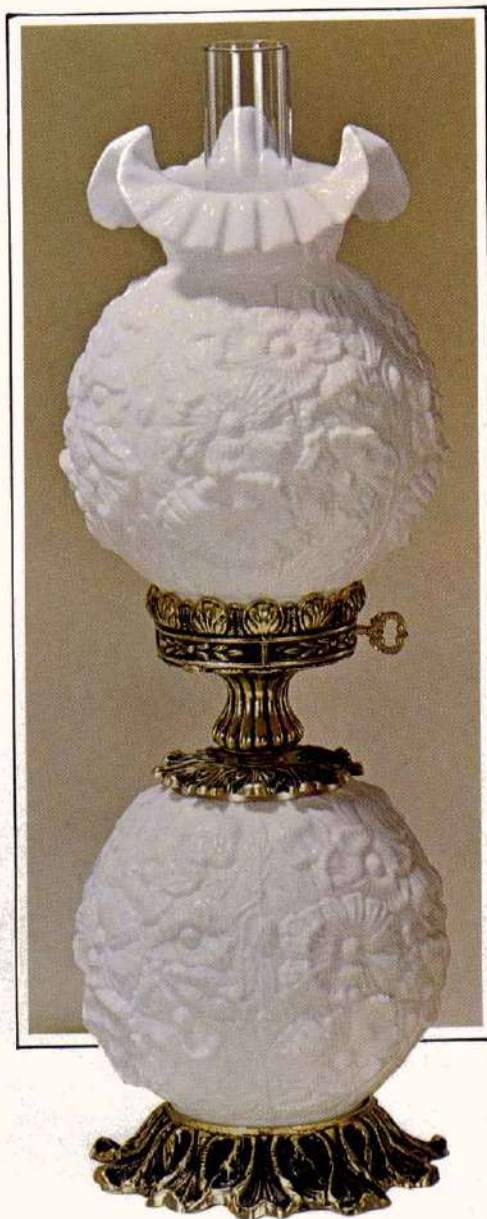
3853 RU  
3" VASE

3667 RU  
BELL



The milk glass lamp sales leader for a number of years.

9101 MI  
24" GONE WITH  
THE WIND LAMP  
POPPY PATTERN





# Lily of the Valley

A winsome collection of demure flower pattern pieces in subtle blue hues and opalescent dress. These are demonstrated sales leaders.

*On order blank — page 1, column 2.*



8458 BO  
BUD VASE



8453 BO  
ROSE BOWL



8265 BO  
BELL



8489 BO  
CANDY BOX



8404 BO  
FAIRY LIGHT

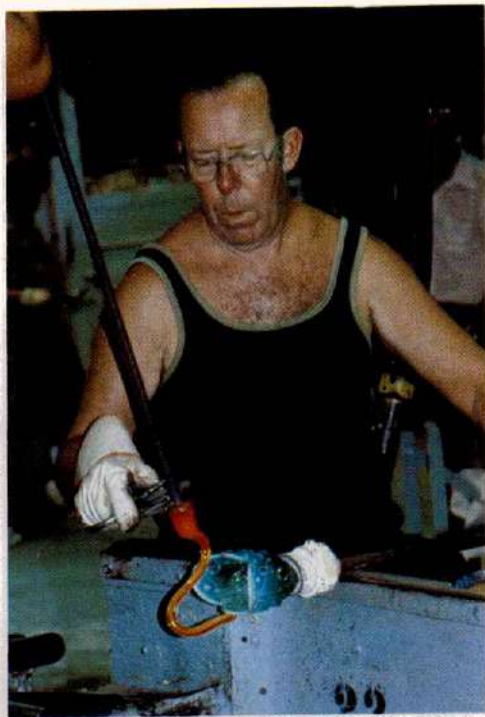


8437 BO  
BASKET



8450  
HANDKERCHIEF VASE





## an art of hand and heart

Fenton Art Glass is unique in an age of mass-production.

Each piece is handcrafted . . . an art unto itself. Its graceful beauty depends solely on the glassblower's pride of craftsmanship, the skill of his hand and eye.

The Fenton craftsman has a respect, almost reverence, for the glassmaker's tools. He handles them much as his forefathers did all the way back to the first glass furnace fired at Jamestown, Virginia, in 1608.

# Blue Opalescent



3950 BO  
BUD VASE

3837 BO  
7" BASKET



8294 BO  
PANELED DAISY  
TOOTHPICK

8248 BO  
SCROLL & EYE  
NUT DISH

3628 BO  
FOOTED COMPORT



8225 BO  
GRAPE NAPPY



# Lily of the Valley

## IN CAMEO OPALESCENT

An unusual blending of shades of brown and tan. A bouquet of pattern and color—delicate Lilies of the Valley, the warm glow of Cameo Opalescent. A unique design from the Fenton artisans.



8489 CO  
CANDY BOX



8437 CO  
BASKET



8458 CO  
BUD VASE



8265 CO  
BELL



8450 CO  
HANDKERCHIEF  
VASE



8294 CO  
PANELED DAISY  
TOOTHPICK  
& VOTIVE



8404 CO  
FAIRY LIGHT



8225 CO  
GRAPE NAPPY



8453 CO  
ROSE BOWL



8248 CO  
SCROLL & EYE  
NUT DISH



# Cameo Opalescent

Authentic Early American patterns and colors. A comfortable earth tone for today's strong "back to nature" decorating trends. A natural kind of beauty with no two pieces exactly alike.

*On order blank—page 1, column 3.*



3907 CO  
26" LAMP



3950 CO  
BUD VASE



3837 CO  
7" BASKET



3854 CO  
4½" VASE



3628 CO  
FOOTED COMFORT



# French Opalescent

A blending of crystal and white . . . so very right in any color scheme . . . the opalescence clings to each small, white, bell-shaped flower and pattern.

On order blank—page 1, column 3.



8404 FO  
LILY OF THE VALLEY  
FAIRY LIGHT



8458 FO  
LILY OF THE VALLEY  
BUD VASE



8437 FO  
LILY OF THE VALLEY  
OVAL BASKET



8489 FO  
LILY OF THE VALLEY  
CANDY BOX



8453 FO  
LILY OF THE VALLEY  
ROSE BOWL



8248 FO  
SCROLL & EYE NUT DISH



8265 FO  
LILY OF THE VALLEY  
BELL



8294 FO  
PANELED DAISY  
TOOTHPICK/VOTIVE



8450 FO  
LILY OF THE VALLEY  
HANDKERCHIEF VASE



8225 FO  
GRAPE NAPPY



5163 FO  
SMALL BIRD



5165 FO  
CAT



5169 FO  
DUCKLING



# Strawberries on French Opalescent



9305 SF  
BASKET WEAVE 20" STUDENT LAMP

The creamy richness of French Opalescent . . . crystal edged with white, created by a special glassmaking process. Decorated with luscious strawberries, painted by hand. Each piece of this new Fenton line is proudly signed by the artist.

An appealing combination for every taste . . . from the garden of fine art glass at Fenton.

*On order blank—page 1, column 3.*



9334 SF  
BASKET WEAVE  
7" BASKET



9056 SF  
BUD VASE



5163 SF  
SMALL BIRD



5169 SF  
DUCKLING



9462 SF  
BASKET WEAVE  
BELL



5165 SF  
CAT



9320 SF  
BASKET WEAVE  
4 1/2" VASE



# Crystal Velvet

Fenton Crystal Velvet—a new bench mark in hand crafted glass. The clarity of pattern, the gentle softness, the unquestioned excellence of form create glass artistry of unusual achievement. Priced in a range to cover nearly any gift buying.

*On order blank—page 2, column 1.*



9405 VE  
21" POPPY STUDENT  
LAMP



8405 VE  
BEADED FAIRY LIGHT



5107 VE  
MADONNA PRAYER LIGHT



9168 VE  
BRIDE & GROOM BELL



8222 VE  
BASKET WEAVE BOWL



8441 VE  
LOTUS NUT DISH



9660 VE  
CRAFTSMAN BELL



8438 VE  
3 TOED GRAPE BASKET



# Water Lily

... continuing the Fenton tradition of authentic Early American pattern glass ... unusually appealing in Crystal Velvet.



8480 VE  
FOOTED CANDY BOX



8433 VE  
FOOTED BASKET



8456 VE  
BUD VASE



8434 VE  
7" BASKET



8430 VE  
FOOTED COMPORT



8473 VE  
CANDLEHOLDER



8429 VE  
ROSE BOWL

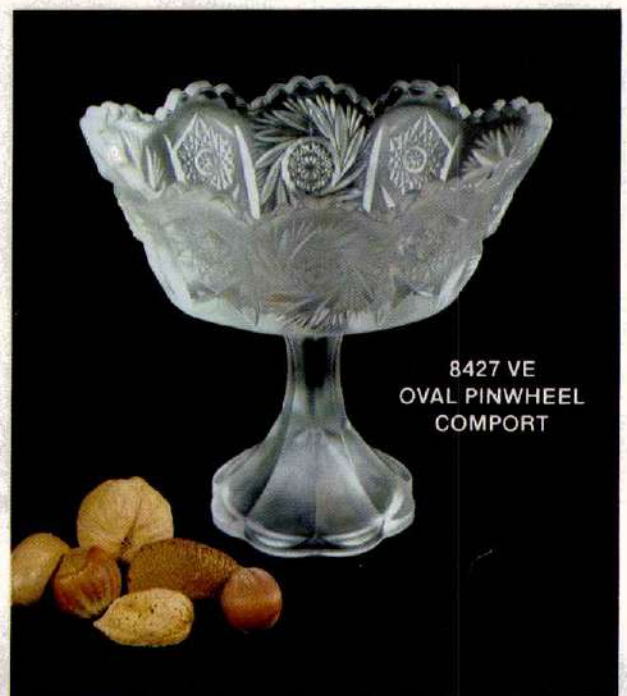


# Strawberries by Fenton



Beautiful little strawberries engraved in the glass—each tiny facet sparkles to reflect the craftsmanship of the master mouldmaker and glass artisan. We're very proud of this lively pattern. It really does sell, too.

On order blank—page 2, column 1.



8427 VE  
OVAL PINWHEEL  
COMPORT



# Crystal Velvet Accents...

and now a wise owl fairy lite, a ducky little duckling, a hen on nest and a pair of kissing kiddies . . .

On order blank - page 2, column 1



5108 VE  
OWL FAIRY LIGHT



5101 VE  
KISSING KIDS



5169 VE  
DUCKLING



5168 VE  
OWL



9299 VE  
OWL RING TREE



5186 VE  
SMALL HEN ON NEST



5100 VE  
PRAYING BOY & GIRL



5163 VE  
SMALL BIRD



5197 VE  
HAPPINESS BIRD



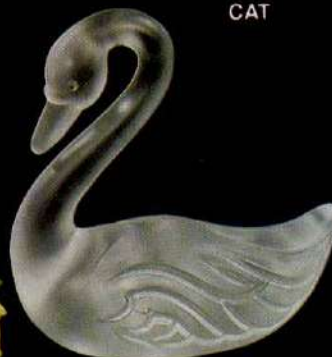
5165 VE  
CAT



5162 VE  
BUNNY



5171 VE  
BUTTERFLY ON STAND



5161 VE  
SWAN



# Fabergé and Rose

Five new pieces . . . two tested patterns . . . and Crystal Velvet . . . sales accents for sure.

*On order blank—page 2, column 1.*



8466 VE  
FABERGÉ BELL



9451 VE  
FABERGÉ MINIATURE BUD VASE



9431 VE  
FABERGÉ  
MINIATURE  
BASKET



9299 VE  
OWL RING TREE



9271 VE  
ROSE ASH TRAY



9216 VE  
ROSE SOAP DISH

9242 VE  
ROSE  
BATHROOM  
TUMBLER



# Currier & Ives

8418 VE  
\*CURRIER & IVES PLATE  
W/STAND  
1st in a series



8461 VE  
CURRIER & IVES BELL



8409 VE  
CURRIER & IVES LIGHT/VASE  
W/CANDLE INSERT





# Currier & Ives

WINTER IN THE COUNTRY —  
"The Old Grist Mill"  
in Antique Blue and Antique Brown.

— this bas-relief design, so artistically sculptured by the mould maker, is accented by the hand blending of color shades and hues.

\*This is Plate No. 1 of a Collection Series to be issued in subsequent annual June supplements. The other designs will be "Harvest," "The Old Homestead in Winter," and "Winter Pastime."

On order blank — page 1, column 3.

Antique  
Blue



Antique Brown





# Blue Satin

Blue Satin is "the compatible color" with nearly all decorator shades. A reproduction of a famous glass treatment that originated about 1880. Each piece is formed by hand and then satinized to give the softness in pattern and subtle colors that blend comfortably with today's homes.

On order blank — page 2, column 1.



9107 BA  
20" POPPY STUDENT LAMP



8456 BA  
WATER LILY BUD VASE



7451 BA  
6" VASE



9101 BA  
24" POPPY GONE  
W/WIND LAMP



1966 BA  
DAISY & BUTTON BELL



8222 BA  
BASKET WEAVE BOWL



8434 BA  
7" WATER LILY BASKET



# Fenton

Four delightful new pieces—owl fairy lite, owl ring tree, duckling and "kissing kids."

*On order blank—page 2, column 1.*

5108 BA  
OWL FAIRY LIGHT



5171 BA  
BUTTERFLY ON STAND

5169 BA  
DUCKLING



5163 BA  
SMALL BIRD



5165 BA  
CAT

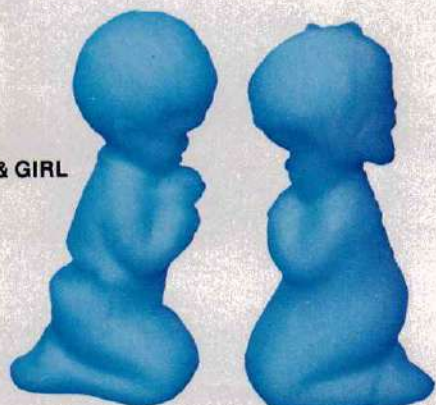


5168 BA  
OWL



9299 BA  
OWL RING TREE

5100 BA  
PRAYING BOY & GIRL



5101 BA  
KISSING KIDS





# Custard Satin

A popular glass of the last century given fresh accent for contemporary living. Blends nicely with other colors. Especially appealing with browns and other earth tones.

... craftsmanship...



9107 CU  
20" POPPY STUDENT LAMP



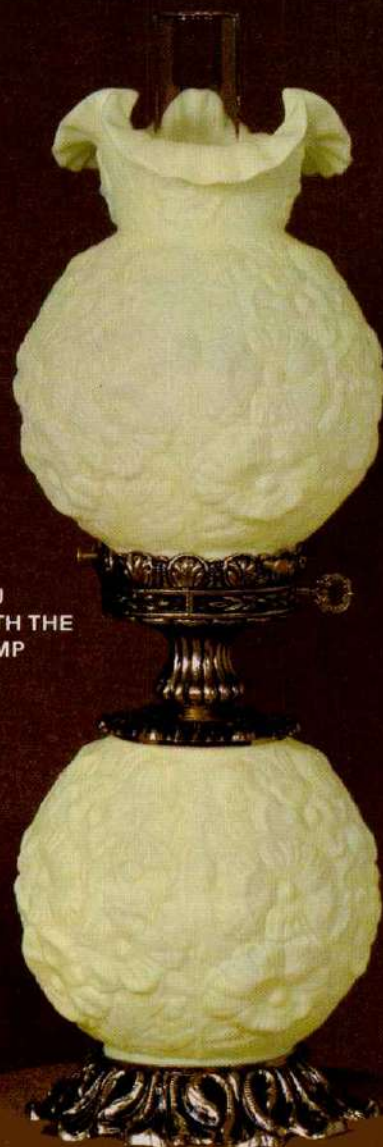
8222 CU  
BASKET WEAVE BOWL



7451 CU  
6" VASE



1966 CU  
DAISY & BUTTON BELL



9101 CU  
24" GONE WITH THE  
WIND LAMP

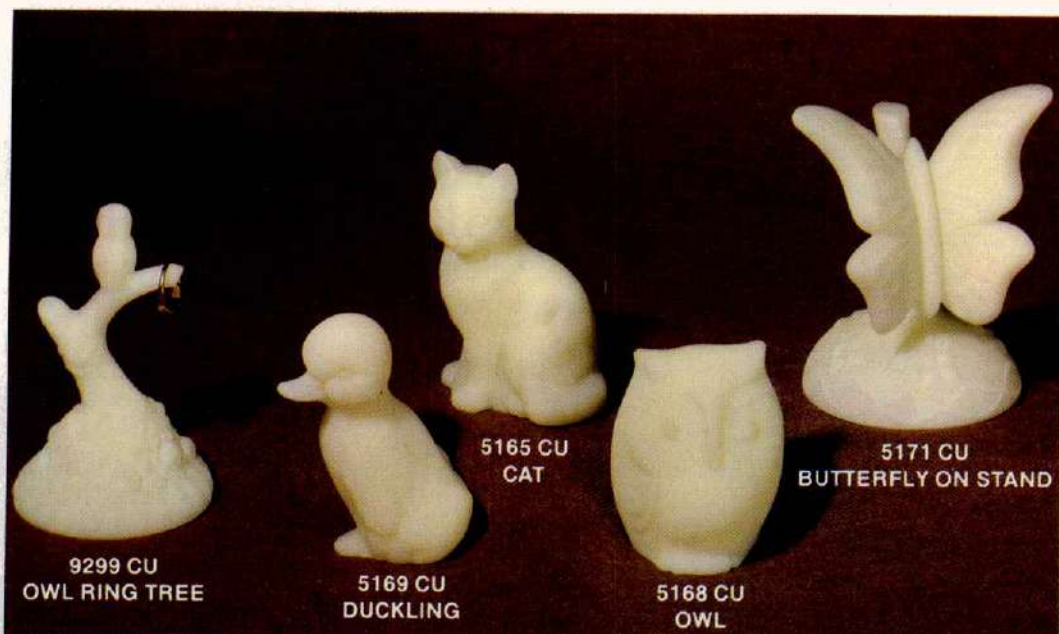


8434 CU  
7" WATER LILY BASKET





On order blank—page 2, column 1.



9299 CU  
OWL RING TREE

5169 CU  
DUCKLING

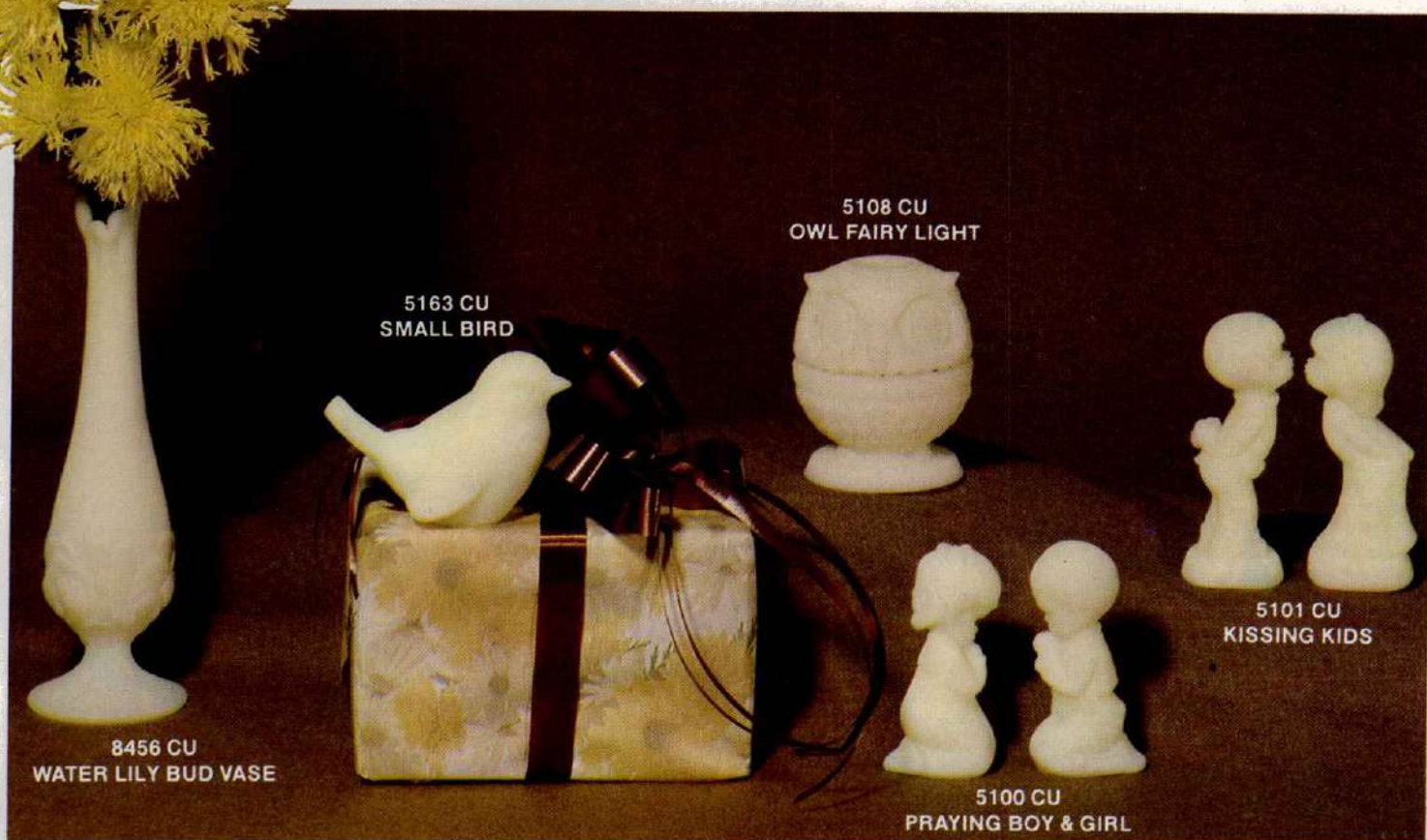
5165 CU  
CAT

5168 CU  
OWL

5171 CU  
BUTTERFLY ON STAND

# Fenton

...sculptured accents...conversation pieces...



8456 CU  
WATER LILY BUD VASE

5163 CU  
SMALL BIRD

5108 CU  
OWL FAIRY LIGHT

5100 CU  
PRAYING BOY & GIRL

5101 CU  
KISSING KIDS



# Roses on Custard

Lovely orangish colored roses, handpainted on custard satin glass and signed by the artist.

A blending of colors to brighten any room. We strongly recommend Roses on Custard to all of our customers.

*On order blank—page 2, column 2.*



9056 RC  
BUD VASE

5163 RC  
SMALL BIRD

7451 RC  
6" VASE

7204 RC  
16" HAMMERED COLONIAL LAMP

5169 RC  
DUCKLING

7484 RC  
CANDY BOX

5140 RC  
EGG ON STAND

7237 RC  
7" BASKET

5161 RC  
SWAN



# Fenton



7507 RC  
25½" FRENCH PROVINCIAL LAMP



9054 RC  
TALL BUD VASE



7429 RC  
FOOTED COMFORT



7300 RC  
2 PC. FAIRY LIGHT



8267 RC  
MEDALLION BELL



5165 RC  
CAT



5162 RC  
BUNNY



5197 RC  
HAPPINESS BIRD



# Roses on Ruby

Lovely white roses handpainted on classic Fenton Ruby. Especially suited for Valentine's Day and for the Ruby (40th) anniversary . . . or for any gift giving occasion.

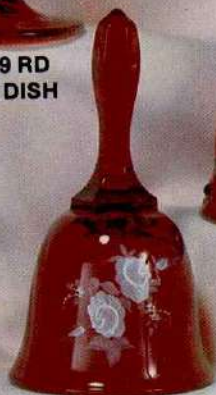
*... and each piece is proudly signed by the artist...*



9054 RD  
TALL BUD VASE



7229 RD  
NUT DISH



7564 RD  
BELL



8267 RD  
MEDALLION BELL



1700 RD  
FAIRY LIGHT



9056 RD  
BUD VASE



7237 RD  
7" BASKET



7254 RD  
4 1/2" VASE



5197 RD  
HAPPINESS BIRD





# Handpainted Blue Roses...



6056 BL  
WAVE CREST VASE



8267 BL  
MEDALLION BELL



7429 BL  
FOOTED COMFORT



9056 BL  
BUD VASE



7300 BL  
2 PC. FAIRY LIGHT



7209 BL  
21" STUDENT LAMP



"Something old, something new, something borrowed, something blue."

On order blank -- page 2, column 2.



# Handpainted Blue Roses...

Dainty blue roses handpainted  
on Fenton "barely blue" glass.  
Each piece signed by the artist.  
A Fenton favorite . . .



9054 BL  
TALL BUD VASE



7254 BL  
4½" VASE



5165 BL  
CAT



5140 BL  
EGG ON STAND



5161 BL  
SWAN



7205 BL  
16" HAMMERED COLONIAL LAMP  
W/PEWTER FINISH



7237 BL  
7" BASKET







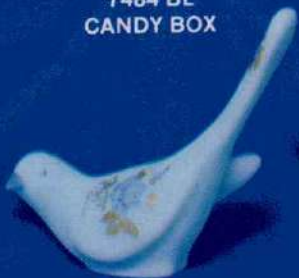
The Fenton trademark. Your assurance of quality and workmanship.



9309 BL  
20" CLASSIC STUDENT LAMP  
W/PEWTER FINISH



7484 BL  
CANDY BOX



5197 BL  
HAPPINESS BIRD



5169 BL  
DUCKLING



7252 BL  
7" VASE



5162 BL  
BUNNY



5163 BL  
SMALL BIRD



# Chocolate Roses on Cameo Satin

Handpainted roses in today's popular earth tones. As handsome as the Fenton Cameo Satin glass they enhance. Each is an original work of art proudly signed by the artist.

*On order blank — page 2, column 2.*



7309 DR  
21½" STUDENT LAMP



7429 DR  
FOOTED COMFORT



9056 DR  
BUD VASE



5197 DR  
HAPPINESS BIRD



5161 DR  
SWAN



5165 DR  
CAT



7484 DR  
CANDY BOX







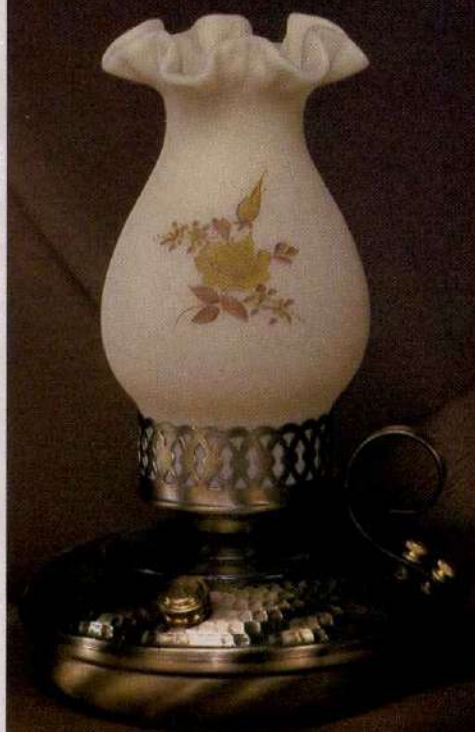
The Fenton trademark. Your assurance of quality and workmanship.



7252 DR  
7" VASE



8267 DR  
MEDALLION BELL



7311 DR  
11" HURRICANE LAMP  
(ELECTRIC)



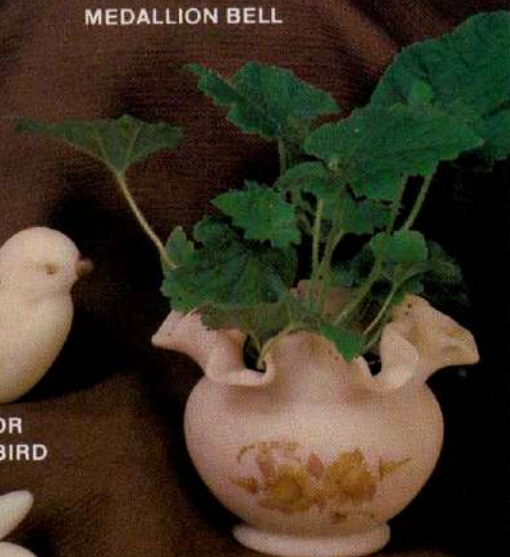
7488 DR  
TEMPLE JAR



5163 DR  
SMALL BIRD



5162 DR  
BUNNY



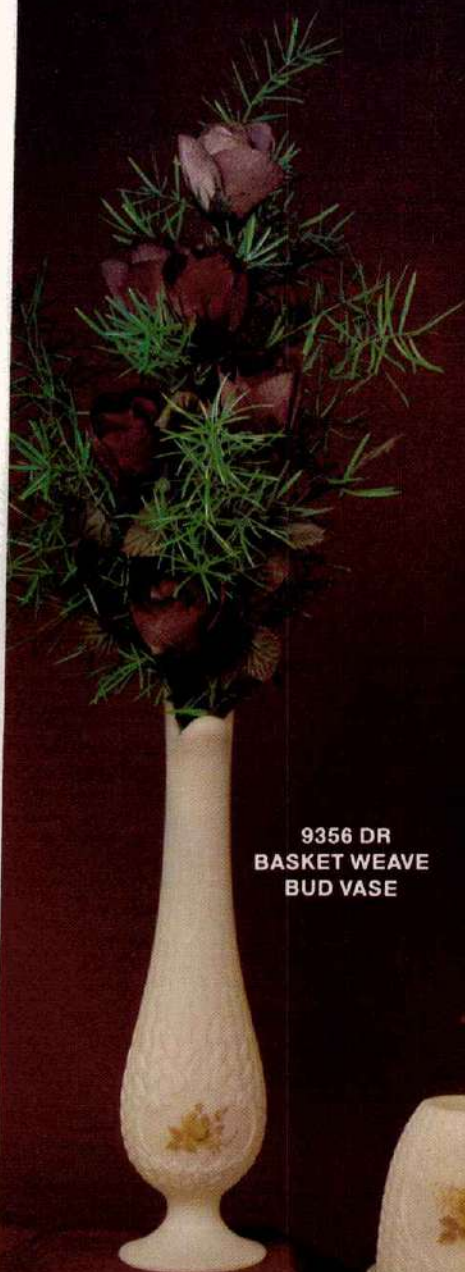
7254 DR  
4½" VASE



# Chocolate Roses on Cameo Satin

SEVEN BRAND NEW ITEMS ON THIS PAGE—  
Check these items at the cash register—  
"How sweet it is!"

*On order blank—page 2, column 2.*



9356 DR  
BASKET WEAVE  
BUD VASE



9305 DR  
BASKET WEAVE  
20" STUDENT LAMP



9304 DR  
BASKET WEAVE FAIRY LIGHT



9462 DR  
BASKET WEAVE  
BELL



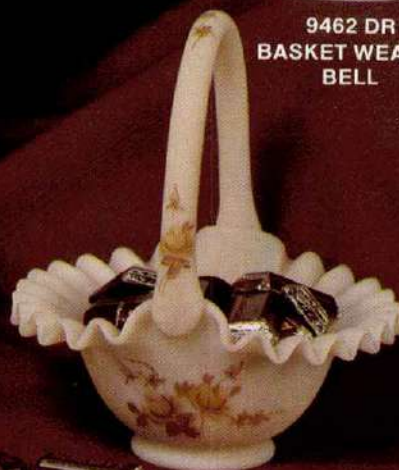
6056 DR  
WAVE CREST VASE



5169 DR  
DUCKLING



5140 DR  
EGG ON STAND



7237 DR  
7" BASKET



# Fenton Stretch Glass

..... and now there are two!

*Velva Rose and Velva Blue*

Inspired by the tremendous success of last year's special issue of Velva Rose.

*On order blank — page 2, column 3.*



9101 VR  
24" GONE WITH THE WIND LAMP



5171 VB  
BUTTERFLY ON STAND



7505 VB  
5 PC. EPERGNE SET



9128 VR  
7 1/2" SHALLOW BONBON



# Velva Blue

## Iridescent Stretch Glass by Fenton

Inspired by the tremendous success of 1980's special issue of Velva Rose. This new color of Velva Blue will feature the top selling items from last fall plus 9 "new" shapes, some really new and some from Fenton's early history.

On order blank — page 2, column 3.



9101 VB  
POPPY 24" GONE WITH  
THE WIND LAMP



9056 VB  
BUD VASE



7536 VB  
8½" BASKET



9422 VB  
PERSIAN MEDALLION COMPORT



7526 VB  
6½" BOWL



5171 VB  
BUTTERFLY ON STAND



9128 VB  
SHEFFIELD  
7½" SHALLOW BONBON



Velva Blue—this base color was originally made by Fenton 50 years ago . . . but adapted today to the unusual technique of stretch glass.



7505 VB  
5 PIECE EPERGNE SET



9488 VB  
PANELED CANDY BOX



9459 VP  
14" PANELED VASE



7562 VB  
BELL (STAR CRIMPED)



8405 VB  
BEADED FAIRY LIGHT



9134 VB  
BUTTERFLY & BERRY  
6 1/2" BASKET



9248 VB  
ROSE 10 1/2" BOWL



9270 VB  
ROSE CANDLEHOLDER



8250 VB  
MINIATURE  
ROSE BOWL





# Velva Rose

First introduced by Fenton in the 20's, this iridescent stretch glass treatment was revived last year with tremendous success. The 1981 edition is all new and ready to spark your sales to even greater heights.

*On order blank - page 2, column 3.*



9101 VR  
POPPY 24" GONE WITH  
THE WIND LAMP



9432 VR  
11" PANELED BASKET



9270 VR  
ROSE CANDLEHOLDER



8250 VR  
MINIATURE ROSE BOWL



9066 VR  
WHITTON BELL



8405 VR  
BEADED FAIRY LIGHT





The Fenton trademark.  
Your assurance of  
quality, workmanship  
and salability.



9488 VR  
PANELED CANDY BOX



9455 VR  
PANELED HANDKERCHIEF VASE



4801 VR  
DIAMOND LACE  
4 PC. EPERGNE SET



9134 VR  
BUTTERFLY & BERRY  
6½" BASKET



8431 VR  
WATER LILY COMPORT



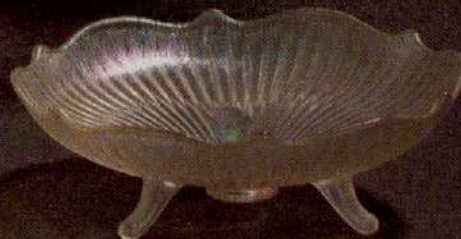
9453 VR  
FABERGÉ BUD VASE



9423 VR  
6" FLORAL BOUQUET VASE



9248 VR  
ROSE 10½" BOWL



9128 VR  
SHEFFIELD  
7½" SHALLOW BONBON



# Pink Blossom

by Fenton

A PERENNIAL BEST SELLER.

On order blank — page 2, column 3.



7252 PY  
7" VASE



9308 PY  
20" CLASSIC STUDENT LAMP



8288 PY  
MEDALLION CANDY BOX



9056 PY  
BUD VASE



7451 PY  
6" VASE



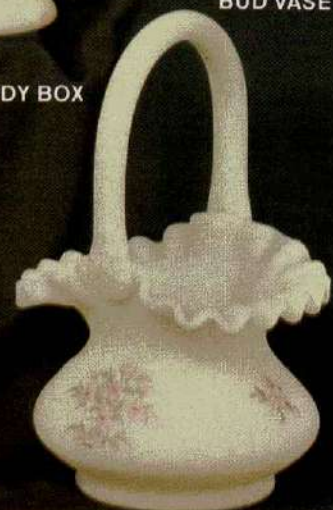
5165 PY  
CAT



7229 PY  
NUT DISH



5197 PY  
HAPPINESS BIRD



7437 PY  
BASKET



... after the artist finishes painting the pink flowers, each petal is given an extra dimension by the hand application of small particles of glass. The piece is then refired to make permanent Fenton's unique petal "icing". Each piece is proudly signed by the artist.



9054 PY  
TALL BUD VASE



7429 PY  
FOOTED COMPORT



7488 PY  
TEMPLE JAR



7254 PY  
4 1/2" VASE



8267 PY  
MEDALLION BELL



5162 PY  
BUNNY



5161 PY  
SWAN



7237 PY  
7" BASKET



5163 PY  
SMALL BIRD



7300 PY  
2 PC. FAIRY LIGHT



5169 PY  
DUCKLING



# Handpainted Pink Dogwood on Historic Burmese

*A Reproduction of One of the  
Rare Glass Treatments of the 19th Century*

Burmese was the name given this lovely glass treatment in 1885 by its creator Frederick Shirley, of the Mt. Washington Glass Company in New Bedford, Massachusetts.

Produced only for a very limited number of years, legend states that the name was provided by Queen Victoria who, upon receipt of a gift of this glass, was said to have exclaimed that the rich tones of blushing pink reminded her of a Burmese sunset.

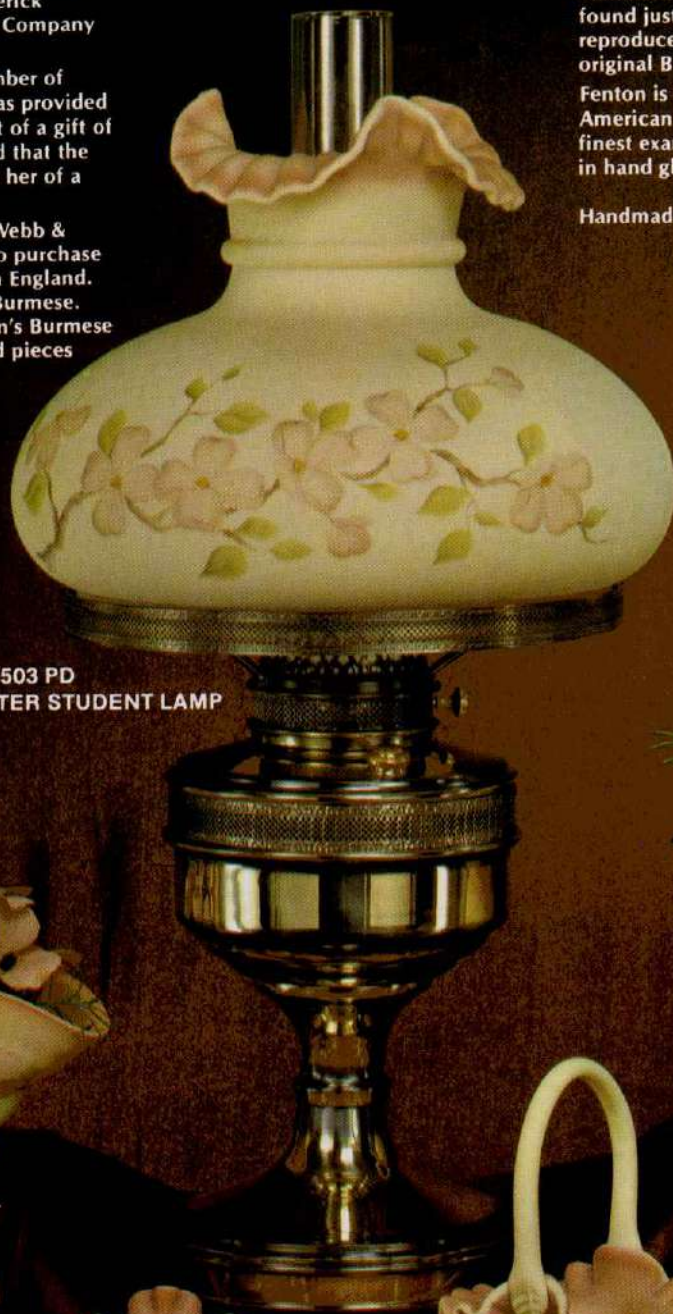
Queen Victoria influenced Thomas Webb & Sons, a famous English glassmaker, to purchase a license to produce the treatment in England. These pieces are known as Queen's Burmese. Both the original Burmese and Queen's Burmese are among the rarest and most prized pieces collected by glass connoisseurs.

Enamored with the soft translucent beauty of Burmese, Fenton Glass chemist Charles W. Goe experimented with innumerable formula variations over a period of many years until he found just the right formula to faithfully reproduce the delicate blushing loveliness of the original Burmese treatment.

Fenton is extraordinarily proud to offer to the American public Burmese Glass; one of the finest examples of America's wonderful heritage in hand glass craftsmanship.

Handmade in the Fine Fenton Tradition

*On order blank—page 2, column 3.*



7503 PD  
23½" ROCHESTER STUDENT LAMP



7535 PD  
7½" BASKET



7547 PD  
5½" VASE



7546 PD  
4½" VASE



7442 PD  
5" VASE



7235 PD  
5" BASKET




7558 PD  
BUD VASE

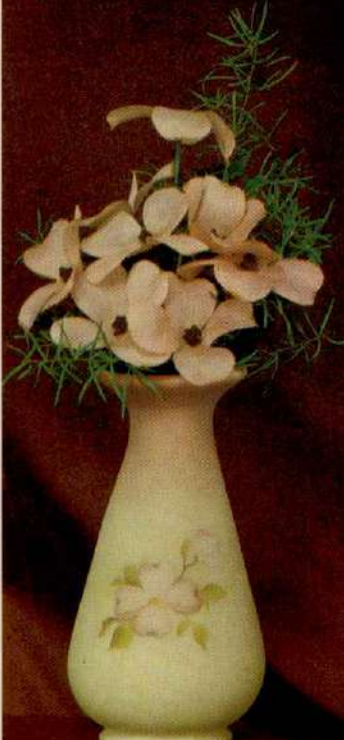


# Fenton Burmese

Pure gold, uranium and another precious metal are used to achieve this exotic glass color. Each hand painted piece is proudly signed by the artist.




7506 PD  
HANGING SWAG LAMP




7559 PD  
7½" VASE




7552 PD  
SMALL TULIP VASE




7501 PD  
3 PC. FAIRY LIGHT



7560 PD  
6½" VASE



9301 PD  
20" COLUMN LAMP



7255 PD  
LARGE TULIP VASE



# Burmese Lamps

Famous Fenton Burmese glass in impressive functional lamps.  
The "high light" in beautiful handcrafted lamps.



9200 BR  
29" ROSE GONE WITH THE WIND LAMP  
Shipping Weight 30 lbs..



The Fenton trademark.  
Your assurance  
of quality and workmanship.

## Pillar Lamp

A statuesque combination of fine metal components and Fenton hand blown shades. 10" Ball Shade, 38" Tall. Shipping Weight 18 lbs.

9201-BR






# Mandarin and Empress Vases

Designed to appeal to collectors and those who require the unique, the beautiful, the outstanding. Deeply offset sculpted oriental figures create an aura of luxurious mystique. This is glass artistry at its finest.

*On order blank — page 2, column 3.*

The continuous scene which encircles each vase is handpainted and then meticulously hand stippled to bring about an extra dimension of color and design.



8251 HI  
9" MANDARIN VASE

8251 HU  
9" MANDARIN VASE



8252 HU  
7½" EMPRESS VASE



8252 HI  
7½" EMPRESS VASE



# Ebony by Fenton

Classic shapes in jet black ebony.  
Perfect for any setting.

*On order blank—page 3, column 1.*



7521 BK  
6" BOWL



7561 BK  
10 1/2" VASE



7550 BK  
6 1/2" VASE



7557 BK  
9 1/2" VASE



7588 BK  
TALL TEMPLE JAR



7488 BK  
SMALL TEMPLE JAR



7558 BK  
BUD VASE



7522 BK  
IVY BALL



# Silver Poppies on Ebony

Beautifully handpainted and burnished silver. So very right for traditional, contemporary or oriental décor. Suggest to your customers that they polish just as they would their fine silver.

The glass with a very special class. By Fenton.

*On order blank—page 3, column 1.*



7550 PE  
6½" VASE



7588 PE  
TALL TEMPLE JAR



7521 PE  
6" BOWL



7557 PE  
9½" VASE



7561 PE  
10½" VASE



7488 PE  
SMALL TEMPLE JAR



7558 PE  
BUD VASE



7522 PE  
IVY BALL



# Daisies on Custard

Beautiful sprays of brown-eyed daisies handpainted on satin finished custard glass. Each petal is given an extra dimension by the hand application of small particles of glass. The piece is then refired to make permanent Fenton's unique petal "icing". Each piece is proudly signed by the artist.

*On order blank - page 3, column 1.*



7410 DC  
21" STUDENT LAMP



7252 DC  
7" VASE



7429 DC  
FOOTED COMFORT



7300 DC  
2 PC. FAIRY LIGHT



7484 DC  
CANDY BOX



7451 DC  
6" VASE







The Fenton trademark. Your assurance of quality and workmanship.

9308 DC  
20" CLASSIC STUDENT LAMP



9056 DC  
BUD VASE



7229 DC  
FOOTED NUT DISH



7237 DC  
7" BASKET



5163 DC  
SMALL BIRD



5169 DC  
DUCKLING



5165 DC  
CAT



8267 DC  
MEDALLION BELL





# Log Cabin on Custard

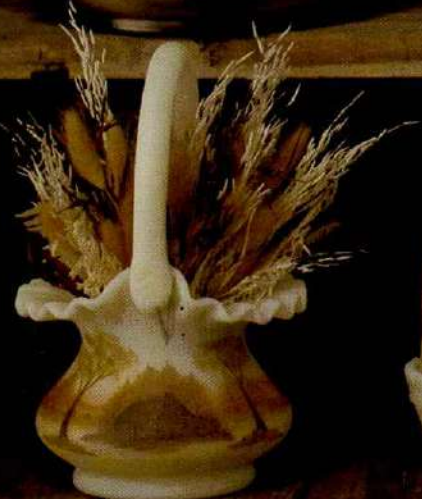
The snug, warm glow of Evening in Early America.  
A hand-built cabin in a woodland setting . . . .

*On order blank - page 3, column 1.*

7204 LC  
16" HAMMERED COLONIAL LAMP



7412 LC  
21" STUDENT LAMP



7437 LC  
BASKET



7300 LC  
FAIRY LIGHT



7252 LC  
7" VASE



An interesting achievement in handpainted Early American glass. Log cabins snug midst a setting of trees and hills, entirely handpainted on historic Custard glass and signed by the artist. The rustic simplicity of pioneer life is warmly expressed in these unusual art pieces . . . a touch of history to gentle the future.



7215 LC  
20½" HAMMERED COLONIAL LAMP



7362 LC  
BELL



7488 LC  
TEMPLE JAR



7506 LC  
HANGING SWAG LAMP



7311 LC  
11" HURRICANE LAMP  
(ELECTRIC)



# Miniatures From Fenton

Collectible miniatures in two patterns. Beautifully hand decorated and individually signed by the artist. All new.

(See 28 piece assortment on price list—page 3, column 1)

9556 PY  
BUD VASE

7554 BQ  
5" BLOWN VASE

9536 BQ  
BASKET

9589 PY  
OVAL JEWEL BOX

9591 PY  
SLIPPER





# Pink Blossoms

... after the artist finishes painting the pink flowers, each petal is given an extra dimension by the hand application of small particles of glass.



9536 PY  
BASKET



9590 PY  
BOOT

9556 PY  
BUD VASE



7554 PY  
5" BLOWN VASE



9591 PY  
SLIPPER



9592 PY  
TOOTHPICK/  
VOTIVE



9589 PY  
OVAL JEWEL BOX

# Blue Roses on Custard



9536 BQ  
BASKET



9556 BQ  
BUD VASE



9592 BQ  
TOOTHPICK/  
VOTIVE



7554 BQ  
5" BLOWN VASE



9591 BQ  
SLIPPER



9590 BQ  
BOOT



9589 BQ  
OVAL JEWEL BOX



# Spanish Lace



3522 SC  
FOOTED COMFORT

3509 SC  
24" G. W/WIND LAMP

3567 SC  
BELL

3538 SC  
8½" BASKET





# Crystal edged Spanish Lace...

The premier expression of Fenton hand glass artistry . . . and exclusively by Fenton.



3510 SC  
11" FOOTED CAKEPLATE

3570 SC  
CANDLE HOLDER

Only Fenton makes glass like this.



3551 SC  
8" VASE



3524 SC  
9" BOWL



A delicate crystal edging is hand applied to pure white milk glass after its basic form is achieved. Guided by deft hand and highly trained eye, Fenton's most skilled craftsmen are needed to create this Fenton exclusive.



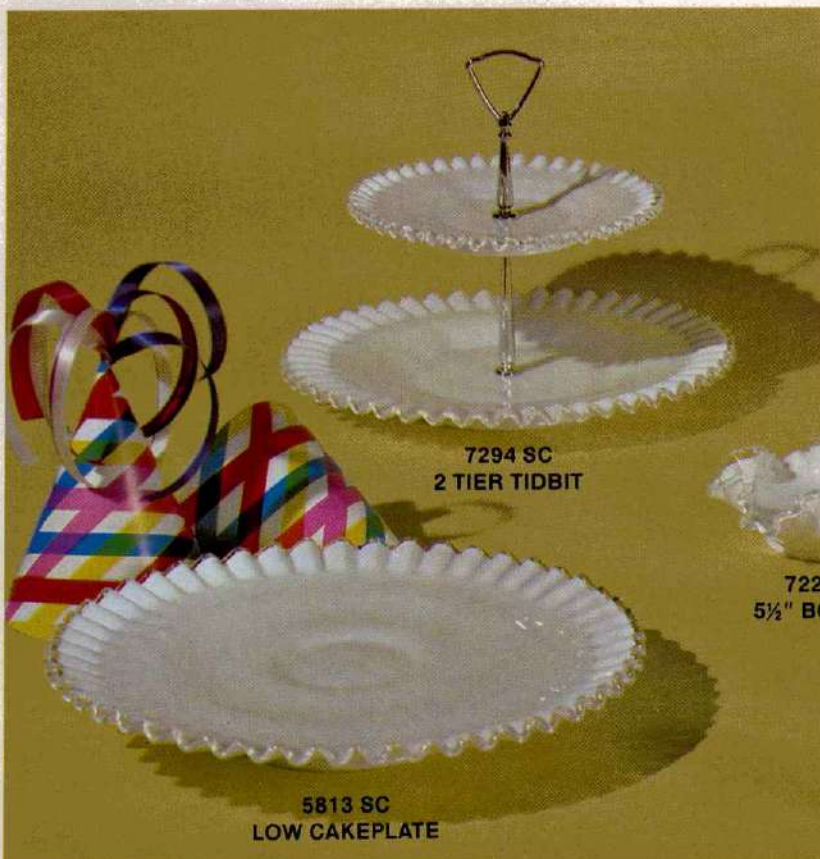
# Fenton

## Silver Crest



Silver Crest, a Fenton exclusive, combines the simplicity of milk glass with the sophistication of crystal. A delicate crystal edging is added to pure white milk glass after its basic form has been blown or shaped.

Applying this edging is the job of Fenton's most skilled craftsmen, guided only by a deft hand and a trained eye. Call attention to your customers that this uniquely beautiful glass is made only by Fenton.





# Violets in the Snow.....

Fenton artists "grow" these lovely violets with loving care. Handmade, hand-painted and proudly signed . . .

*On order blank - page 3, column 2*



3551 DV  
8" VASE



3524 DV  
9" BOWL



3570 DV  
CANDLEHOLDER

5163 DV  
SMALL BIRD



7429 DV  
FOOTED COMPORT



3522 DV  
FOOTED COMPORT



3538 DV  
8½" BASKET



9056 DV  
BUD VASE



5169 DV  
DUCKLING



3567 DV  
BELL



7254 DV  
4½" VASE



7451 DV  
6" VASE



5165 DV  
CAT



H A N D P A I N T E D

# Daisies on Cameo Satin

Happy little orangey—rust daisies handpainted on Fenton Cameo Satin glass. These rich beige art glass pieces are “naturals” for the flourishing market for earth-tone decorative accents . . . and each piece is signed by the artist.

*On order blank—page 3, column 2.*



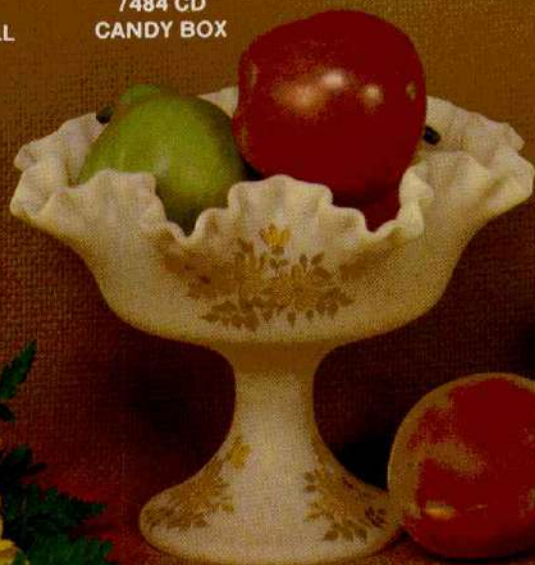
9305 CD  
20" STUDENT LAMP  
BASKET WEAVE PATTERN



8267 CD  
MEDALLION BELL



7484 CD  
CANDY BOX



7429 CD  
FOOTED COMFORT



5165 CD  
CAT



5161 CD  
SWAN







The Fenton trademark. Your assurance of quality and workmanship.



9056 CD  
BUD VASE



7488 CD  
TEMPLE JAR



7252 CD  
7" VASE



5162 CD  
BUNNY



9356 CD  
BASKET WEAVE BUD VASE



9462 CD  
BASKET WEAVE BELL



5197 CD  
HAPPINESS BIRD



7237 CD  
7" BASKET



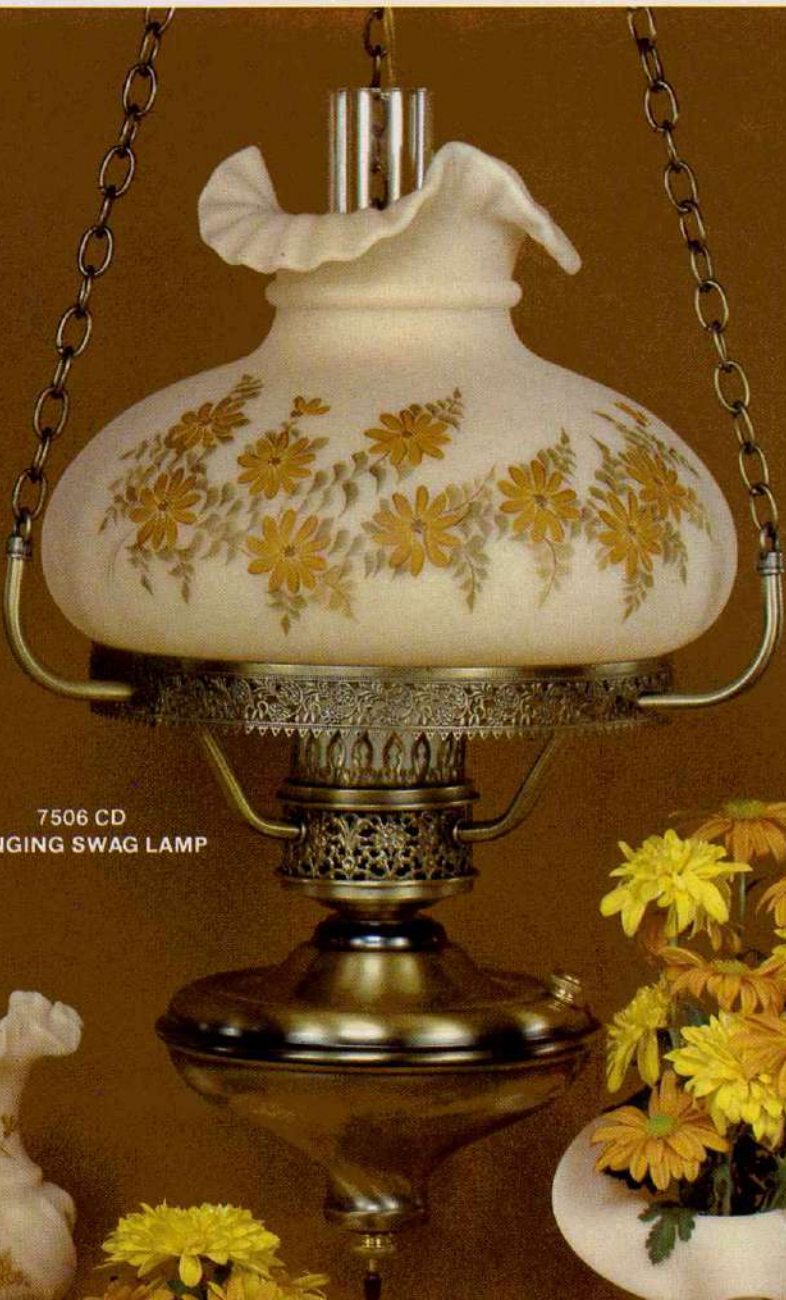


HANDPAINTED


# Daisies on Cameo Satin

Each piece an artistic creation . . .  
each proudly signed by the artist.


*On order blank — page 3, column 2.*



7506 CD  
HANGING SWAG LAMP




6056 CD  
WAVE CREST  
VASE



5163 CD  
SMALL BIRD




7254 CD  
4 1/2" VASE




7255 CD  
TULIP VASE



7204 CD  
16" HAMMERED COLONIAL  
LAMP



9304 CD  
BASKET WEAVE  
FAIRY LIGHT



5169 CD  
DUCKLING



# Fenton Crystal

Handcrafted in "Daisy and Button"  
and "Fine Cut and Block" patterns

On order blank — page 3, column 2.



9159 CY  
"FINE CUT AND BLOCK"  
TALL HANDKERCHIEF VASE



9158 CY  
"FINE CUT AND BLOCK"  
SWUNG VASE



1980 CY  
DAISY AND BUTTON  
COVERED CANDY BOX



1939 CY  
DAISY AND BUTTON  
OVAL BASKET



1921 CY  
DAISY AND BUTTON  
OVAL BOWL





# Fenton Crystal.....

In "Fine Cut and Block Pattern"



9150 CY  
SMALL BUD VASE



9102 CY  
2 PC. FAIRY LIGHT



9180 CY  
CANDY BOX



9103 CY  
COV'D SUGAR & CREAM



9106 CY  
SALT & PEPPER



9120 CY  
COMFORT



9157 CY  
4 1/2" VASE



9127 CY  
7" BOWL



# "Daisy and Button" Crystal

Beautiful handcrafted crystal for modest budgets in traditional early American patterns.

*On order blank — page 3, column 2.*



1925 CY  
10 1/2" BOWL



1995 CY  
SLIPPER



1970 CY  
CANDLEHOLDER



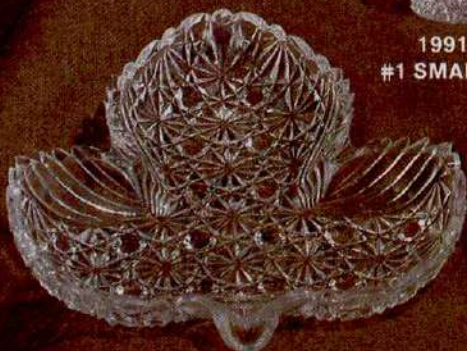
1992 CY  
#2 HAT



1991 CY  
#1 SMALL HAT



1990 CY  
BOOT



1976 CY  
LEAF TRAY



1967 CY  
BELL



# Handpainted Blue Dogwood on Cameo Satin

The blossoms that decorate spring landscapes are now blooming on this Fenton collection. Blue Dogwood on Cameo Satin Glass . . . each piece handcrafted, hand-painted and signed by the artist.

7484 BD  
CANDY BOX



7204 BD  
16" HAMMERED COLONIAL  
LAMP



7488 BD  
TEMPLE JAR



7252 BD  
7" VASE



5169 BD  
DUCKLING



5197 BD  
HAPPINESS BIRD



5162 BD  
BUNNY





# Basket Weave

Three new pieces to complete the collection of this successful pattern . . . and each signed by its artist.

*On order blank — page 3, column 2*

9356 BD  
BASKET WEAVE  
BUD VASE



9324 BD  
BASKET WEAVE VASE



9305 BD  
20" STUDENT LAMP  
BASKET WEAVE PATTERN



9334 BD  
7" BASKET WEAVE  
BASKET



9304 BD  
BASKET WEAVE  
FAIRY LIGHT



9462 BD  
BASKET WEAVE BELL



5163 BD  
SMALL BIRD





# Blue Dogwood by Fenton

Each piece handcrafted . . . handpainted . . . signed by the artist.

On order blank—page 3, column 3.



5165 BD  
CAT



7429 BD  
FOOTED COMFORT



6056 BD  
6" WAVE CREST VASE



7363 BD  
HANDLED BOTTLE



7229 BD  
NUT DISH



9056 BD  
BUD VASE



7312 BD  
HURRICANE CANDLE LAMP  
PEWTER FINISH



7564 BD  
BELL



5161 BD  
SWAN



# "Gentle Fawn"



A reminder of a Mother's gentle touch  
— this soft little fawn is the second in the  
series of handpainted, artist signed collectors pieces—to  
commemorate Mother's Day—1981.

7418 FN

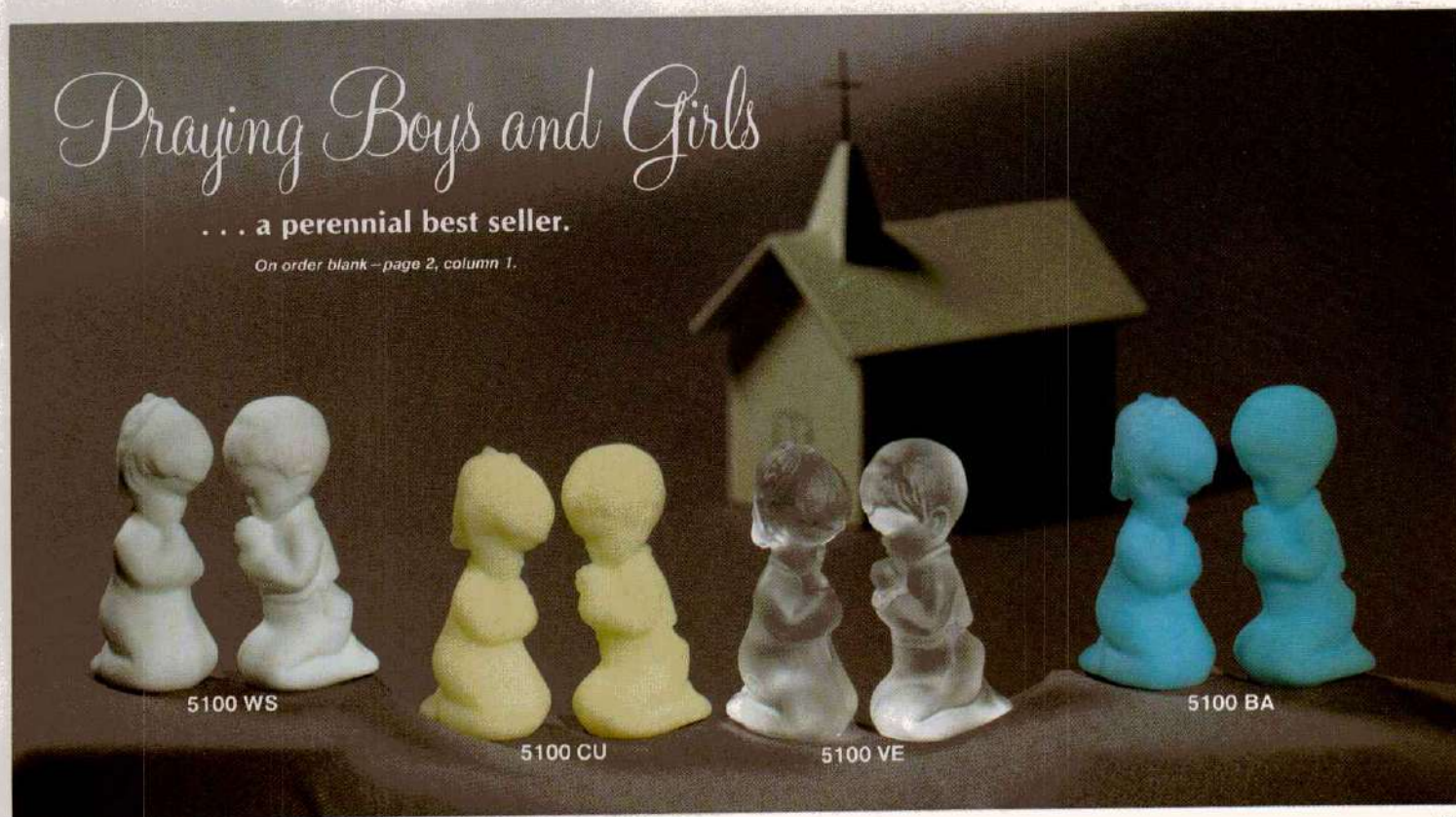
7564 FN

On order blank—page 3, column 2.

# Praying Boys and Girls

... a perennial best seller.

On order blank—page 2, column 1.



5100 WS

5100 CU

5100 VE

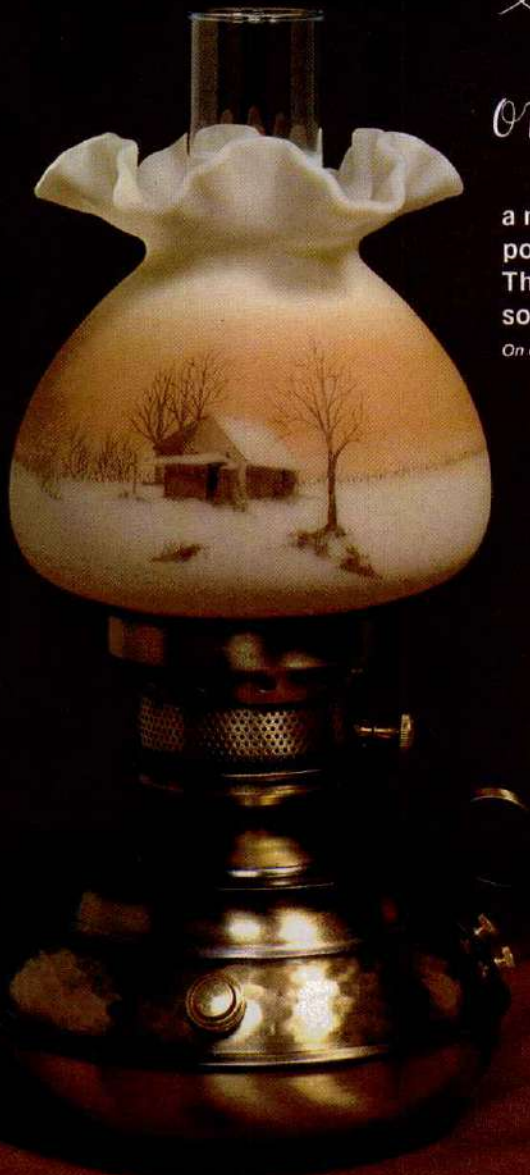
5100 BA



# "Sunset" on Cameo Satin by Fenton

a new dimension in handpainted glassware—a haunting portrayal of the sun setting behind a rustic old barn. This scene creates a gentle, nostalgic feeling. Absolutely beautiful!!!—and each piece signed by its artist.

*On order blank—page 3, column 2.*



7204 SS  
16" HAMMERED COLONIAL LAMP  
SHIPPING WGT.—7½ lbs.



7418 SS  
8" PLATE



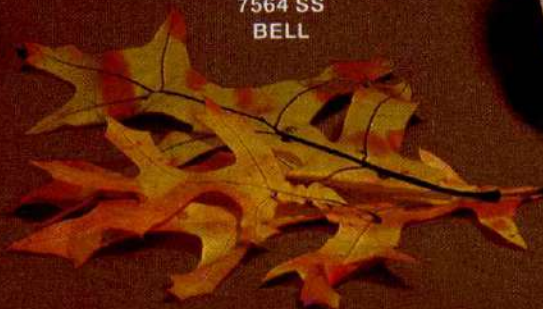
7564 SS  
BELL



7254 SS  
4½" VASE



7300 SS  
2 PC. FAIRY LIGHT







7255 SS  
TULIP VASE



7437 SS  
BASKET



7209 SS  
21" STUDENT LAMP  
SHIPPING WGT. — 10 lbs.



7488 SS  
TEMPLE JAR



# Chickadee Lamps

Delightful little birds bring you a new family of lamps to brighten American homes. Beautifully hand painted on soft cameo glass, each lamp is completely handmade in the tradition of fine craftsmanship by Fenton.

*On order blank — page 3, column 3.*



7503 CQ  
23½" ROCHESTER STUDENT LAMP



7504 CQ  
19" PRINCESS LAMP  
3 WAY SWITCH  
W/NIGHT LIGHT IN LOWER GLOBE





7506 CQ  
HANGING SWAG LAMP

Don't forget to order enough so you  
will have some for your own home!



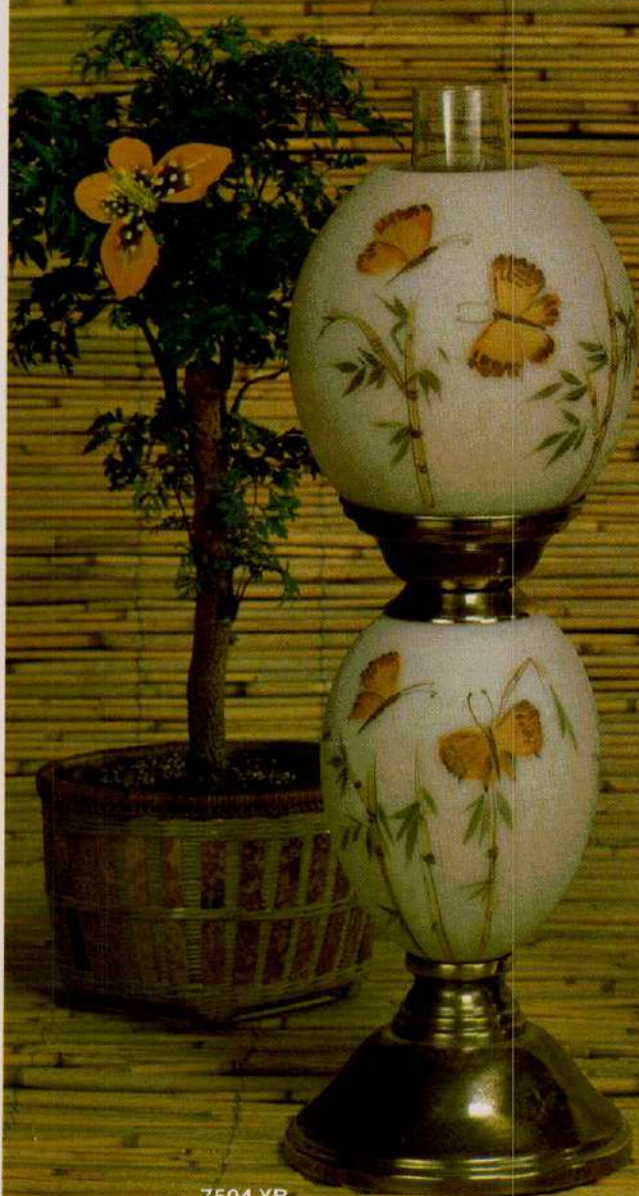
7507 CQ  
25½" FRENCH PROVINCIAL LAMP



# Butterflies and Bamboo by Fenton

..... so right for so many settings. Handsomely made  
and hand painted and signed by the artist.  
Order one of each to sell ..... and one of each to take  
home.

*On order blank - page 3, column 3.*



7504 YB  
19" PRINCESS LAMP  
3 WAY SWITCH  
W/NIGHT LIGHT IN LOWER GLOBE



7507 YB  
25 1/2" FRENCH PROVINCIAL LAMP





*Fenton*

**Special Bell Assortment 0082AS**  
**35 PIECES (1 each of 35 styles)**  
 On order blank—page 3, column 3.



# Mountain Reflections

Fenton's newest and most artistic decoration. So soothing and restful—yet so majestic—as the snow capped mountain slides from the top to splash in the pool below.

To bring beauty into the homes of America, each piece is created and proudly signed by the artist.

*On order blank — page 3, column 3.*



7257 MV  
10" VASE



7564 MV  
BELL



7419 MV  
8" PLATE W/STAND



7503 MV  
23½" ROCHESTER STUDENT LAMP



HANDMADE IN AMERICA . . . .



7506 MV  
HANGING SWAG LAMP



7204 MV  
16" HAMMERED COLONIAL LAMP



7437 MV  
BASKET



7300 MV  
2 PC. FAIRY LIGHT



# American Craftsman Series

## "THE HOUSEWRIGHT"

This is No. 12 and the final edition in the annual Craftsman Plate Series. Made by hand in limited number the moulds will be destroyed on Dec. 31, 1981. These plates commemorate Early American craftsmen and their role in the growth of America.



9681 CN  
81 CRAFTSMAN PLATE  
W/STAND AND BOOKLET

8208 CN  
LITTLE BROWN CHURCH  
CANDY BOX

## Carnival Collectibles by Fenton

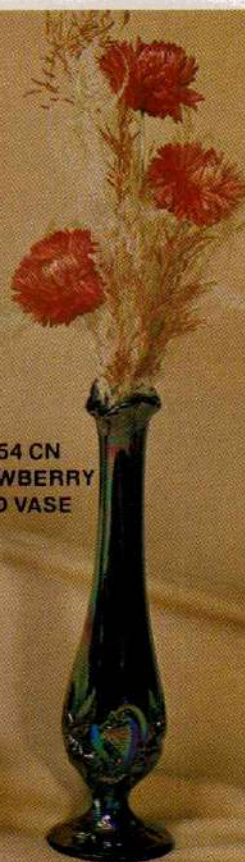
On order blank - page 3, column 3.



3539 CN  
SPANISH LACE  
8½" BASKET



3527 CN  
SPANISH LACE  
FOOTED COMPORT



9454 CN  
STRAWBERRY  
BUD VASE



5171 CN  
BUTTERFLY ON STAND



5169 CN  
DUCKLING



9299 CN  
OWL RING TREE



9465 CN  
STRAWBERRY  
BELL



5101 CN  
KISSING KIDS

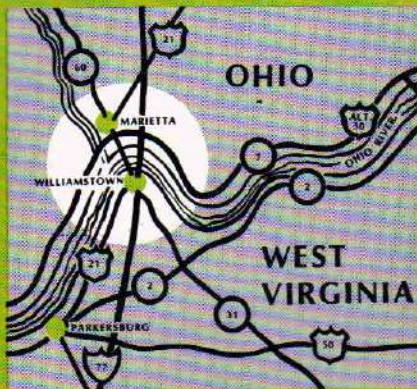


## Come visit us . . .

Each year thousands of visitors come to Mid-Ohio Valley to tour The Fenton Art Glass Company. Whether dealer, tourist, garden club member or school-boy, each is fascinated with the ancient art of glassmaking.

Please accept our cordial invitation to see Fenton yourself . . . soon! We'd like to give you a specially conducted tour. We want you to watch our skilled glass-workers and see them perform their exacting tasks. Then we'd enjoy visiting with you about your shop.

We promise you'll go away with renewed pride and enthusiasm for the Fenton Glass you sell. Won't you let us know when you can come?



**YOU CAN BUY FENTON GLASS . . .** by contacting your Fenton representative. The complete line can be seen in all its attractive colors at your nearest Fenton showroom (marked with an asterisk\*) or at most regional shows.

### Representatives

\*Howard B. Aronow, Inc.  
Room 508, 225 Fifth Avenue  
New York City, New York 10010  
212-683-1523

William P. Becker Associates, Inc.  
4381 Spillway Lane  
Lake Montclair  
Dumfries, Virginia 22026  
703-670-5745  
and

\*Mid Atlantic Gift Center  
Suite 300  
12280 Sunrise Valley Drive  
Reston, Virginia 22091  
703-620-3311

Robert Benson  
16 Amanda Drive  
Rochester, New York 14624  
716-247-3688

Douglas C. Cofelli Associates, Inc.  
P.O. Box 432  
Medford, New Jersey 08055  
609-654-4137

\*Coyne's Giftware Distributing Company  
5900 Wayzata Boulevard  
Minneapolis, Minnesota 55416  
612-544-7755  
and

\*U.M.A.G.A. Trade Center  
Showroom #339  
Minneapolis, Minnesota 55343

John H. Evans Company  
19 Davidson Drive  
Beaver Falls, Pennsylvania 15010  
412-843-2393  
and

\*Columbus Gift Mart  
Showroom B-74  
1999 Westbelt Drive  
Columbus, Ohio 43228  
614-876-3087

Howard Kapper  
P.O. Box 4-2688  
Anchorage, Alaska 99509  
907-279-0310

MacLennan Sales Company  
1830 Maginn Drive  
Glendale, California 91202  
213-245-1337  
and

\*Los Angeles Mart, Suite 309  
1933 South Broadway  
Los Angeles, California 90007  
213-747-3652  
Mail to: Box 4856  
Glendale, California 91202

\*Martin M. Simpson Company  
1562 Merchandise Mart  
Chicago, Illinois 60654  
312-467-8277

\*Martin M. Simpson Company  
Northville Square  
Suite A-180, Lower Level  
133 West Main  
Northville, Michigan 48167  
313-348-7930

\*Martin M. Simpson Company  
Executive Gift Mart - Room 1-121  
6899 Executive Park Drive  
Kansas City, Missouri 64120  
816-231-6101

\*Martin M. Simpson Company  
Indianapolis Gift Mart, Suite 511  
25 W. Maryland  
Indianapolis, Indiana 46225  
317-634-5493

\*Jay Sutton Company  
1090 Denver Merchandise Mart  
Denver, Colorado 80216  
303-572-1614

\*Alan W. Symmes and Associates  
The Center - Bldg. 1  
59 Middlesex Tpk., Room 108  
Bedford, Massachusetts 01730  
617-275-2381 and 2382

\*Thomas and Moore  
2222 Trade Mart  
2100 Stemmens Expressway  
Dallas, Texas 75207  
214-748-2605

The Weikels  
1703 Holbrook, Box 3192  
Greensboro, North Carolina 27402  
919-292-0170  
and

\*Atlanta Merchandise Mart  
Room 10-G-1  
240 Peach Tree Street  
Atlanta, Georgia 30303  
404-525-1184

Scott Williams Enterprise  
2016 NW Blue Ridge Drive  
Seattle, Washington 98177  
206-782-8959  
and

\*Scott Williams Enterprise  
6100 Fourth Avenue, South  
Seattle, Washington 98108  
206-767-6853

Wittkamp & Associates  
Miles P. Wittkamp  
21251 Southwest 84th Place  
Village of Rainbow Springs  
Dunnellon, Florida 32630  
904-489-6040

\*Gregg Giftware, Ltd.  
123 West 7th Avenue  
Vancouver, B. C., Canada, V5Y, 1L8  
604-872-7751

\*W. J. Hughes and Sons "Corn Flower" Ltd.  
102 Tycoos Drive  
Toronto, Ontario, Canada 395  
416-787-1135

\*F. R. Barlow and Sons Pty. Ltd.  
310 Queen Street  
Melbourne, 3000, Victoria, Australia

\*Showroom

## Important Instructions

(please read before placing orders)

This catalog will help you sell more Fenton Glass. Please use it to place your orders between calls by the Fenton salesman. We hope that you will let the catalog be the salesman's assistant and that it will serve you well.

Each shape and pattern offered by Fenton is pictured here. Some pieces are made in several colors. The price list/order blank will list every item and the colors made.

**EASIER RECEIVING AND PRICING**—All Fenton ware is preticketed and contains the retail price, item number and color.

The ware number, color code and item description are also stamped on each carton to facilitate checking in shipments and for easy and accurate inventory control.

We have tried to make our packing as clean and convenient as possible. When you unpack your order, start with carton #1, as we have tried to arrange your invoice in order by carton number and content.

We ask that, when you are unpacking Fenton orders, to be sure that each carton is completely empty when transferring merchandise to the sales floor. Cardboard partitions make it easy to miss hardware and small glass parts packed in the same carton.

**ROUTING OF SHIPMENTS**—We will follow your suggested routing as long as the thru-rate can be protected and service can be arranged with that particular carrier. Otherwise, we will have our traffic department use its best judgment in routing your shipment the best way.

**CLAIMS FOR DAMAGE IN TRANSIT**—All of our shipments are carefully packed by experienced packers in strict accordance with packing methods approved by the various carriers. Should there be breakage or loss in transit, the carrier is liable, and neither you nor The Fenton Art Glass Company is required to suffer a loss. IF DAMAGE IS EVIDENT, POINT THIS OUT TO THE DRIVER AND MAKE A NOTATION ON FREIGHT BILL AS TO SPECIFIC DAMAGE WHEN SHIPMENT IS RECEIVED. It is necessary, however, that you report such damage (including concealed damage) to the carrier in writing within 15 days of delivery and request an inspection report from them showing the extent of the loss. This inspection report becomes the basis for your claim, which should be filed promptly. If you require assistance in filing the claim, we will be glad to help you.

**Should there be damage in a shipment by United Parcel Service (UPS):** If merchandise is received in damaged condition, please report to us **at once**, and **HOLD ORIGINAL CARTON AND MERCHANDISE FOR UNITED PARCEL EXAMINATION. Otherwise, your claims cannot be honored.**

**DISCONTINUED ITEMS**—As previously explained, we frequently drop less popular pieces to make room for new items. Numbers which have been discontinued are then no longer available, and cannot be shipped.

**Refer to back of order blank for conditions of sale.**

**PLEASE REFER TO INVOICE NUMBER AND DATE ON ALL CORRESPONDENCE.**





This will be your catalog for the next two years. Supplements announcing the introduction of new items will be sent to you periodically in 1981 and 1982.



THE FENTON ART GLASS COMPANY, WILLIAMSTOWN, WEST VIRGINIA 26187  
MANUFACTURERS OF AMERICAN HANDCRAFTED GLASS SINCE 1905