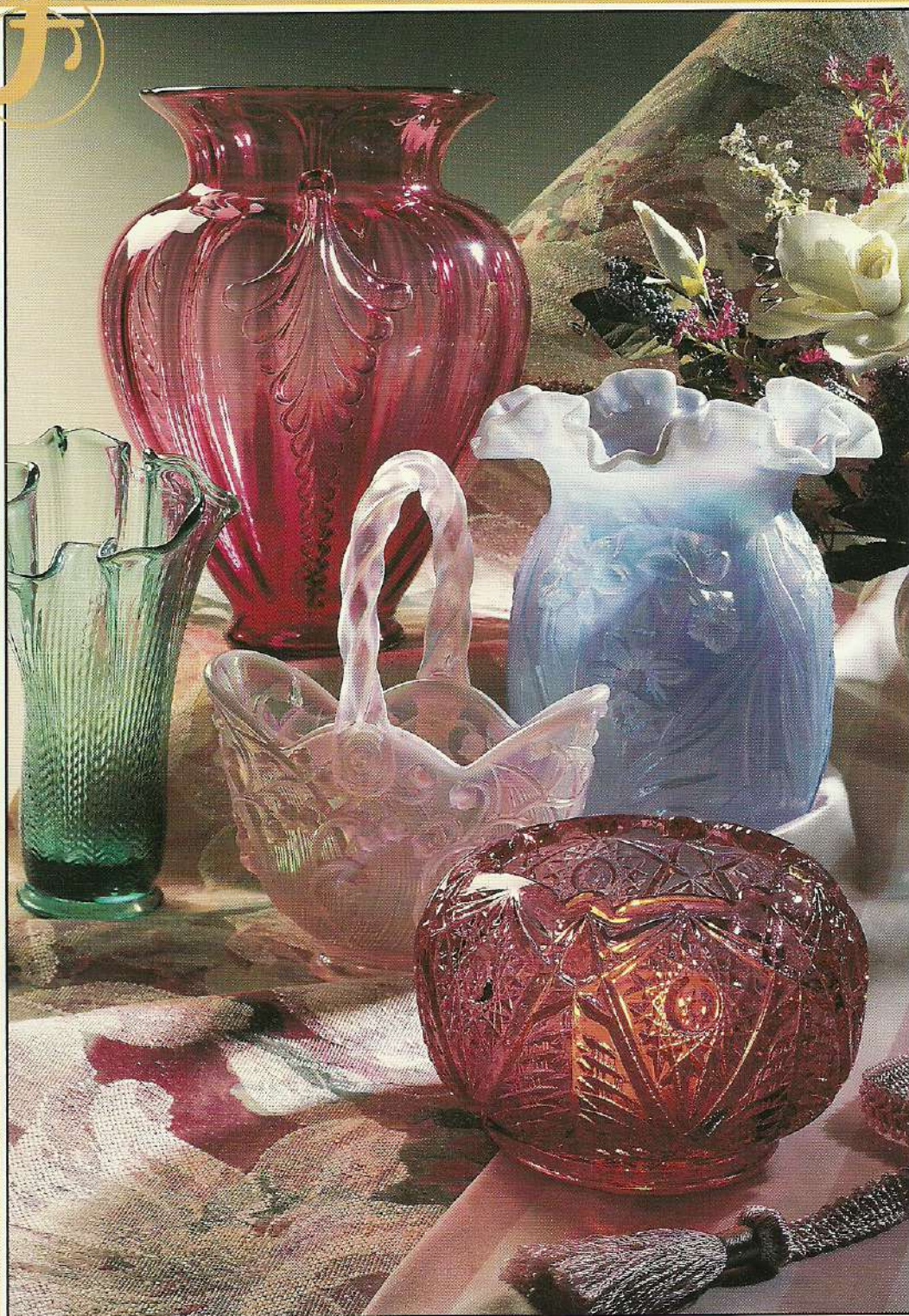


1997 GENERAL CATALOG



F E N T O N

HANDMADE IN THE U.S.A. SINCE 1905

TABLE OF CONTENTS

1 Family Signature Series	26 Pansies on Cranberry
2 - 3 Historical Collection -Topaz Opalescent	27 - 28 . . . Cranberry
4 Medallion Collection/Collectible Eggs	29 Cranberry, Milk Glass and Rose Garden Lamps
5 Designer Series	30 Cranberry Opalescent
6 Amethyst Carnival	31 Rose Garden
8 - 9 Misty Blue	32 Ruby
9 Lilacs on Misty Blue	34 - 35 . . . Anniversary - Language of Love
10 Animal Boxes/Folk Art Boxes	36 Anniversary - Fenton Colors
11 Easter Baskets/Spring Animal Asst.	37 Anniversary - Romance Collection
12 Champagne Satin/Trinket Boxes	38 Birthstone Bears/Calendar Cats
13 Field Flowers on Champagne Satin	39 Guardian Angels/Spring Angels
14 Meadow Beauty	40 Secret Slippers/Slipper Asst.
16 - 18 . . . Dusty Rose	41 Bell Medley /6 1/2" Colored Bells
17 Asters on Dusty Rose Overlay	42 Assortments: Large Figurine Asst./ Swung Vase Asst. /Butterflies
19 Trellis	44 Rose Bowls
20 - 22 . . . Sea Mist Green	45 Candlelighting : Fairy Lights/Welcome Lights/2-way votives
21 Morning Glories on Sea Mist	
22 Plum/ Plum Overlay	46 - 47 . . . Lamps
23 Pansies on Milk	48 - 49 . . . Educational Materials
24 Production Shots	



Aerial
photography
of the Fenton
Art Glass
Company
located in
Williamstown,
WV on the
banks of the
Ohio River.
Photography by
Dick Metzger



The Fenton Family- Back Row:(left to right) Don A. Fenton (Vice-President, Sales), George W. Fenton (President), Mike D. Fenton (Purchasing Manager & Safety Director), Tom K. Fenton (Vice-President, Manufacturing), Randall R. Fenton (Treasurer, Fenton Gift Shop). Middle Row: Wilmer C. "Bill" Fenton (Chairman of the Board), Frank M. Fenton (Historian). Bottom Row: Lynn Fenton Erb (Sales & Marketing Specialist), Christine L. Fenton (Data Processor, Fenton Gift Shop), Shelley Fenton Ash (Graphics Manager, Key Accounts), Nancy Fenton (Director of Design).

FAMILY SIGNATURE SERIES

A family tradition begun in 1905 lives on. Frank Leslie Fenton founded Fenton Art Glass in 1905 as a decorating company. He began producing handmade glass in Williamstown, West Virginia in 1907. An artistic and creative man, F.L. Fenton strove to develop new and unusual colors and treatments to keep Fenton in the forefront of the handmade glass industry.

F.L. Fenton's enthusiasm and pride have been carried down through the second, third and fourth generations of the Fenton Family. The Family Signature Series is comprised of select pieces that represent the glass worker's and glass decorator's finest work.

Numbered and dated 1997, these limited editions* will be inscribed with the signature of a member of the Fenton family who helps carry on the tradition begun in 1905.

DON FENTON

5440 LS
Pitcher, 7 1/2"
Irises on
Misty Blue



SHELLEY FENTON

4751 PI
Vase, 6"
Field Flowers on
Champagne Satin

LYNN FENTON

4648 P9
Basket, 9"
Sweetbriar on
Plum Overlay



MIKE FENTON

7565 X5
Vase, Reverse Melon, 8"
Medallion Collection



FRANK M. FENTON

2040 TP
Fairy Light,
3 Pc, 7 1/2"
Hydrangeas on
Topaz
Opalescent

***Limited to Sales
through April 30, 1997.**

FENTON



HISTORIC COLLECTION ... TOPAZ OPALESCENT

Fenton's Topaz Opalescent, produced first in 1921, is one of a few yellow glasses classified as "Vaseline Glass" by collectors. These yellow glasses, made with uranium, have been produced by American and European factories since the late 1800's.

Their special formulas cause them to glow with a neon brilliance when placed under black light. Fenton's Topaz Opalescent turns creamy white where the glass has been chilled and reheated.

9750 TS
Punch Set,
Punch Bowl on Metal
Base (9" h.) w/ 8 cups

2851 TS
Vase, Wildrose,
8 1/2" - 10"

5150 TS
Vase, Atlantis,
6 1/2"

8248 TS
Nut Dish, Scroll
& Eye, 5"

9048 TS
Punch Cup

1158 TS
Basket, Hobnail, 8 1/2"

9499 TS
Logo, Oval, 3 1/2" w.

HISTORIC COLLECTION...

HYDRANGEAS ON TOPAZ OPALESCENT

Fenton's Hydrangeas on Topaz Opalescent really hits the spot! Hydrangeas achieve their best color through the use of soil amendments -- elements added to improve the shading of the blooms. In the same manner, Fenton has combined color elements to bring

about the best combination for Topaz Opalescent. A stunning collection for an eye-catching display!

7601 TS
Epergne,
5 Pc.,
11 1/2"



0525 AS
Save 4%
12 Pc.
Topaz/Hydrangeas
Assortment

2048 TP
Vase, 9 1/2"



2000 TP
Lamp,
w/Prisms, 20"



2042 TP
Pitcher, 6 1/2"



2033 TP
Basket, 8"



2040 TP
Fairy Light, 3Pc., 7 1/2"
Family Signature Piece (Frank M. Fenton)



9295 TS
Slipper, Rose, 6"



9665 TS
Bell, Beauty, 6 1/2"



FG079 - Counter Card

0526 AS

Save 3%

9 Pc.

Medallion Collection
Assortment



7565 X5
Vase,
Melon, 8"
Family Signature Piece,
(Mike Fenton)



This figurine was born over fire in the creative hands of Fenton Glass Craftsmen. Fired again to a high polish after forming, it features an intricately detailed design that is painted with precise strokes by a skilled artist. The figurine is fired two more times to bring out the high polish of the 22K gold. Truly Medallion Quality.



5258 Y8
Owl, 6"



5147 X9
Mallard, 5"



5160 Z3
Fawn, 3 1/2"



5165 X7
Cat,
3 3/4"



5197 Y5
Happiness
Bird, 6"



5163 Y4
Bird, 4"



5147 Y9
Mallard, 5"



5136 X8
Elephant,
3 1/2"

MEDALLION COLLECTION

True Medallion Quality glass has been achieved through use of 22k gold and repeated firings to bring out a high polish. Featuring three new pieces designed by Robin Spindler, including a Family Signature Vase, a plum Mallard and a black Cat, this updated collection comes complete with wooden bases and Fenton Medallion Collection Seals.

COLLECTIBLE EGGS

LEAF-BASE EDITION

Each egg is handformed by a skilled glass craftsman. The detailed handpainted designs require two painting and firing steps before the artist proudly signs and numbers each egg. A tag with the history of collectible Eggs is included with each gift boxed egg.

0481 AS
Save 5%
15 Pc.
Collectible
Egg
Assortment

5145 7X



5145 7Y



Egg on
Stand, 4"



5145 7T



5145 7V



5145 7W

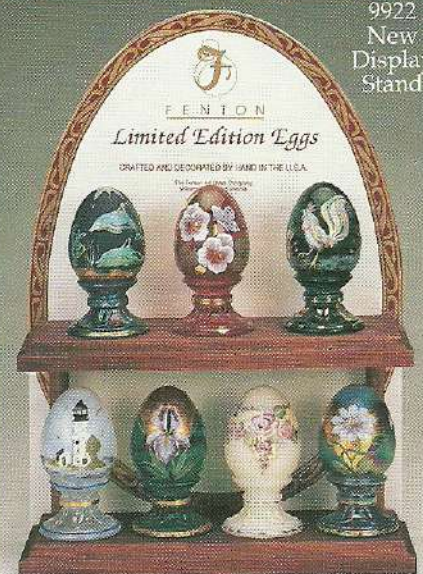


5145 7U



5145 7Z
Exotic
Favrene
Glass, Sandcarved and Handpainted

9922
New
Display
Stand



Limited to 2500
pieces each.
(Assortment orders only
until 1/25/97)



Fenton Decorating Designers (left to right):
Robin Spindler, Martha Reynolds, Kim Plauche, Frances Burton

0527 AS
4 Pc. Designer
Assortment

DESIGNED BY MARTHA REYNOLDS

"Butterflies" by Martha Reynolds, using a more stylistic approach to design, features a favorite Spring symbol on Misty Blue with a Plum ring.

1145 GF
Bell, 6"
"Butterflies"



DESIGNER SERIES

Fenton is proud of its team of talented designers. They study design trends and experiment with new materials and techniques as they strive to bring you fresh, exciting products each season.

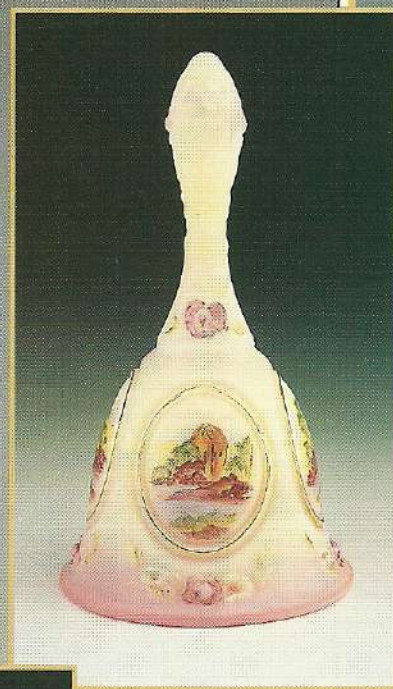
Again this year each designer has responded to the request for a truly Limited Edition offering for bell collectors. Limited to 2500 pieces each, this year's collection shows the fine artistic skills of the glass craftsmen as well as our four Decorating Designers.

Assortment orders
only until 3/1/97

DESIGNED BY FRANCES BURTON

"Forest Cottage" showcases small nature scenes in framed vignettes on a Burmese bell. It was designed by Frances Burton who loves nature scenes on Burmese

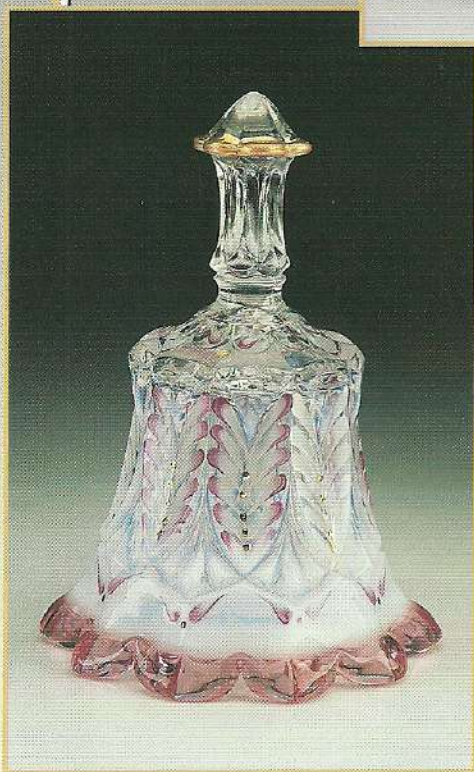
8267 CF
Bell, Medallion, 7"
"Forest Cottage"



DESIGNED BY ROBIN SPINDLER

"Feathers" designed by Robin Spindler. Robin has a wonderful way with stylized elements and her talent is showcased in this beautifully unique bell. It is French Opalescent rung with Dusty Rose, painted and highlighted with 22k gold.

9862 BF
Bell, Whitton, 6 3/4"
"Feathers"



DESIGNED BY KIM PLAUCHE

"Roses on Ribbons" is a delicate romantic design by Kim Plauche. It features Champagne Satin rung with Sea Mist and each piece is highlighted with 22k gold.

4629 AF
Bell, 6 1/2"
"Roses on Ribbons"



F E N T O N



PLUM CARNIVAL

One of the most challenging glasses to produce, Fenton's Plum finds its way into the hearts of collectors by becoming Plum Carnival for 1997. Sought out by carnival aficionados, Plum Carnival gets added appeal with the use of new, stunning moulds and handpainting key figurines.



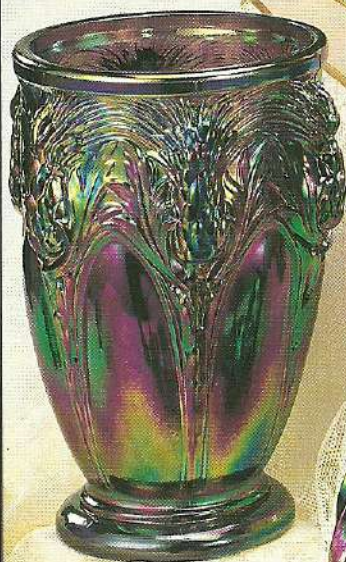
5205 P2
Clowns, 4 Pc. Matched/
Numbered Sets,
Limited to 970 sets,
Handpainting
designed by
Kim Plauche

0528 AS
Save 3%
11 Pc. Plum Carnival
Assortment



6705 PX
Lamp,
Paisley, 20"

8769 PX
Vase, Thistle, 10"



6869 PX
Pitcher,
9 1/2"



5163 P2
Bird, 4"



1535 PX
Basket,
Diamond
Panel,
9 1/2"



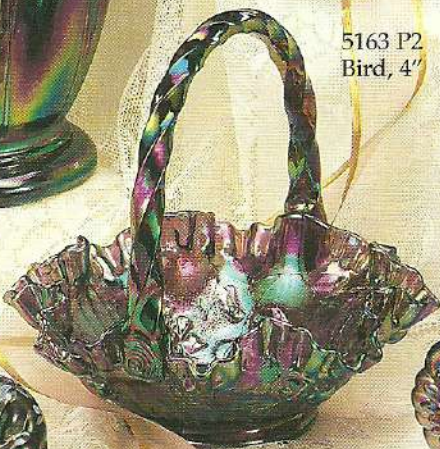
9458 PX
Vase, Swan, 8"



5165 P2
Cat,
3 3/4"



5731 PX
Basket,
Hummingbird, 7 1/2"



5305 PX
Perfume w/Stopper, 5"



9560 PX
Bell, Templebells, 6 1/2"



6780 PX
Candy w/
Cover, 7"





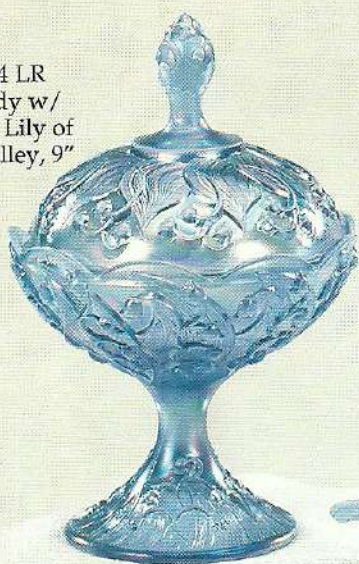
F E N T O N

HANDMADE IN THE U.S.A. SINCE 1905

MISTY BLUE SATIN

Perhaps the softest and most feminine blue from Fenton, Misty Blue Satin speaks volumes in a whisper. Irises have been popular perennials in West Virginia for decades - you can often locate long-abandoned home sites by clumps of Irises remaining over the years. With the addition of handpainted Irises on Misty Blue this velvety collection is complete. Designed by Martha Reynolds.

8484 LR
Candy w/
cover, Lily of
the Valley, 9"



9752 LR
Vase, Daffodil,
7 3/4"



9451 LR
Bud Vase,
Faberge,
7" - 8 1/2"



1535 LR
Basket,
Diamond
Panel, 9 1/2"



8450 LR
Vase, Lily of
the Valley,
7" - 8"



8453 LR
Rose Bowl,
Lily of the Valley,
5 1/2"



8265 LR
Bell, Lily of the
Valley, 6"



5170 LR
Butterfly w/ Stand, 4"



5165 LR
Cat, 3 3/4"



IRISES ON MISTY BLUE SATIN

0529 AS
Save 3%
15 Pc. Misty Blue
Satin/Iris
Assortment

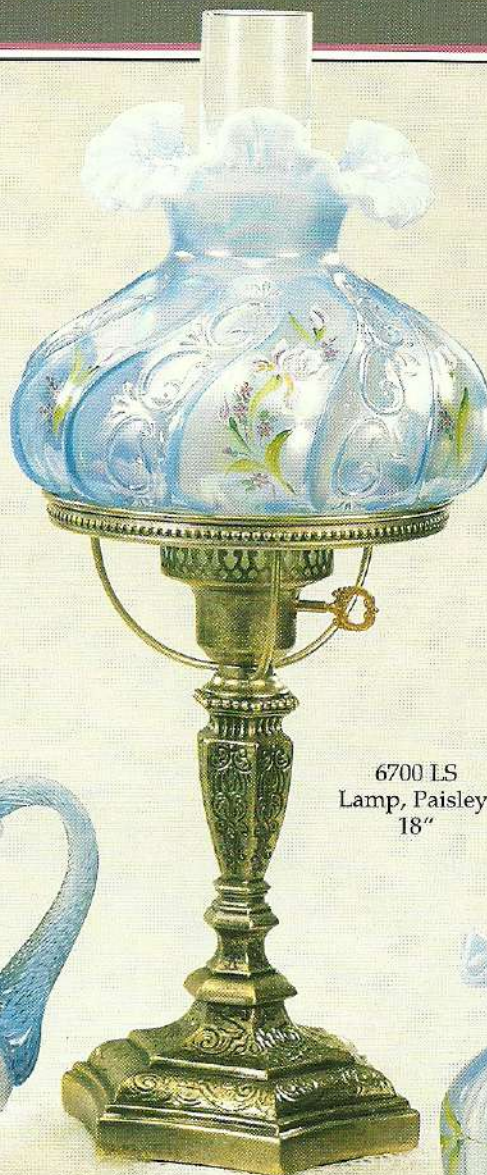
2782 LS
Vase,
Tall Feather,
11"



5440 LS
Pitcher, 7 1/2"
Family Signature
Piece
(Don Fenton)



6700 LS
Lamp, Paisley,
18"



1538 LS
Basket,
8"



1683 LS
Vase, Aurora, 7"



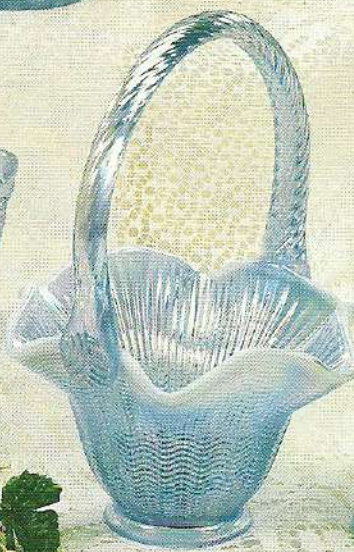
9295 LS
Slipper,
Rose, 6"



5163 LS
Bird, 4"



6830 LR
Basket, Silverton,
7 1/2"



9667 LS
Bell, Aurora, 7"



5151 LS
Bear, Sitting,
3 1/2"



FENTON



ANIMALS & BOXES

FOLK ART ANIMALS

Fenton's top-selling Folk Art collectibles are back for '97 -- in all new colors and decorative patterns. Designed to coordinate with today's top colors, these collectibles also stand alone as lovely works of art. Designed by Robin Spindler, each shape requires air brushing, handpainting and hand rubbed gilding. Limited to sales through 3/31/97.

PASTEL ANIMALS & BOXES

"Don't count your chickens until they're hatched." "Don't put all your eggs in one basket." "Variety is the spice of life." What more can we say? Fenton's country Easter collection is, like any old saying, everlasting.



4680 NJ
Rooster
Box, 8 1/2"

5292 NO
Folk Art
Rooster,
5 1/2"

4683 NU
Bunny
Box, 7"

5186 NE
Hen on Nest, 5"

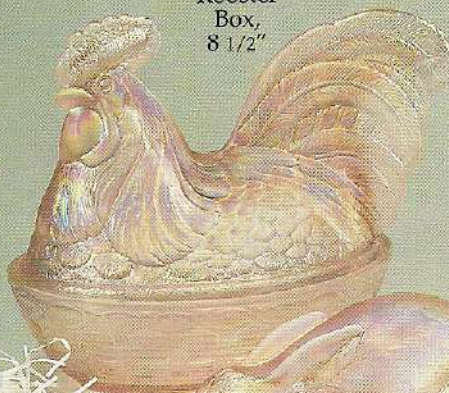
0476 AS
4 Pc.
Folk Art
Assortment

4680 PQ
Rooster
Box,
8 1/2"

0477 AS
Save 3%
16 Pc.
Animal & Box
Assortment



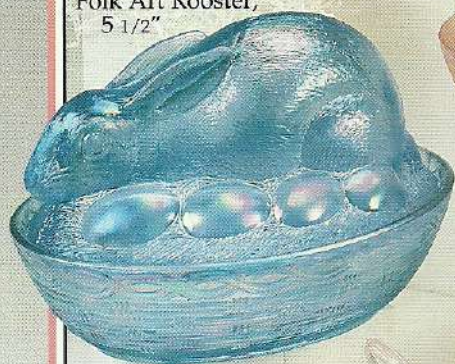
5292 LR
Folk Art Rooster,
5 1/2"



4680 LR
Rooster Box,
8 1/2"



5292 PQ
Folk Art Rooster,
5 1/2"



4683 LR
Bunny Box,
7"



4683 PQ
Bunny Box, 7"



5186 LR
Hen on Nest, 5"

5265 PY
Rooster, 2 3/4"



5275 PY
Bunny, 2 3/4"



5265 LK
Rooster, 2 3/4"



5275 LK
Bunny, 2 3/4"



5186 PQ
Hen on Nest, 5"

BASKETS & ANIMALS

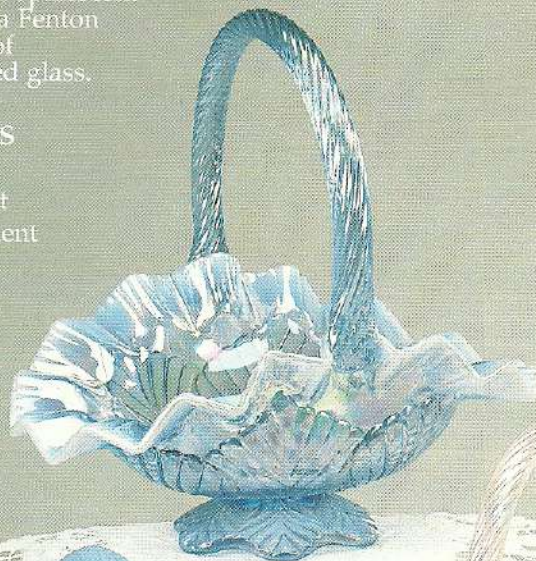
ANIMAL FIGURINES

Fenton's new Bunny and Rooster miniatures add zest to this collection of our most popular figurines.

EASTER BASKETS

New Misty Blue Iridescent and top-selling Champagne Iridescent showcased in four sizes of handmade basket shapes for Easter '97. Cream white edges emerge from our special opalescent formulas; a Fenton hallmark of handcrafted glass.

0479 AS
12 Pc.
Basket
Assortment



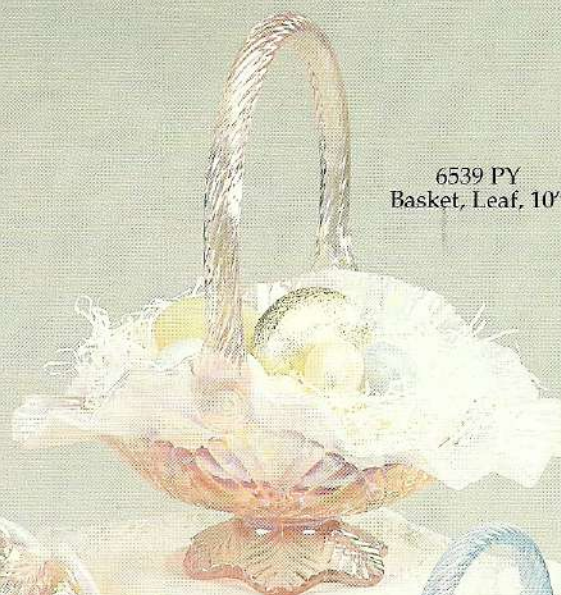
6539 LK
Basket, Leaf, 10"



4634 LK
Basket, Peacock,
8"



4634 PY
Basket, Peacock,
8"



2778 LK
Basket, Strawberry,
6 1/2"



6563 PY
Basket, Footed,
4 1/2"



6558 PY
Basket, Diamond,
4 1/2"



6563 LK
Basket, Footed,
4 1/2"



2776 LK
Basket, Teardrop,
4 1/2"



5162 TJ
Bunny, 3 1/2"

0478 AS
20 Pc. Animal Figurine
Assortment

5165 LE
Cat, 3 1/2"

5275 PY
Mini
Bunny,
2 3/4"

5169 TJ
Duckling,
3"

5165 LR
Cat,
3 1/2"

5148 DK
Mouse, 3"

5275 LK

5162 PD
Bunny, 3 1/2"

5265 LK
Rooster, 2 3/4"

5265 PY
Rooster, 2 3/4"

6539 PY
Basket, Leaf, 10"





0473 AS
12 Pc.
Trinket Box
Assortment

TRINKET BOXES, 4" - 5"



5786 LK

5786 PY

9589 XR

5783 LK

5783 PY

5780 EG

5783 WI

5786 DN

CHAMPAGNE SATIN

A light, neutral color with shimmering presence, Champagne Satin is an opalescent color. A lovely complement for natural tones, it requires two re-heating steps to create its satin luster.

2782 PQ
Vase,
Feather,
11"



0553 AS
Save 3%
13 Pc.
Champagne
Satin
Assortment



8484 PQ
Candy
w/Cover,
Lily, 9"



8437 PQ
Basket, Oval
Lily, 8"

8450 PQ
Vase, Handkerchief,
7" - 8"



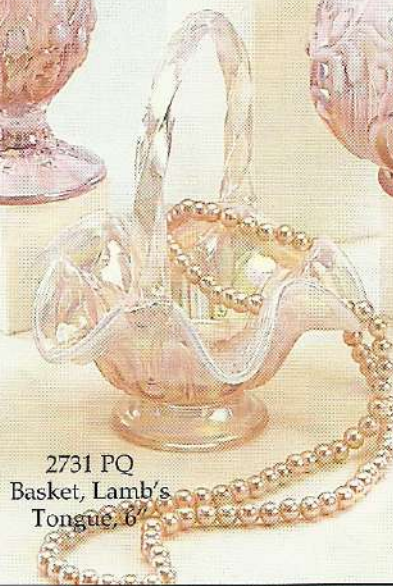
8453 PQ
Rose Bowl, Lily,
5 1/2"



5170 PQ
Butterfly w/ stand, 4"



8265 PQ
Bell, Lily, 6"



2731 PQ
Basket, Lamb's
Tongue, 6"



2931 PQ
Slipper, Paisley, 5"

FIELD FLOWERS ON CHAMPAGNE SATIN

Reminiscent of a warm Summer's eve, Fenton's "Field Flowers" pattern glows on Champagne Satin glass. Classic shapes bring out the iridescent sheen of the glass. Designed by Martha Reynolds to complement today's colors.

8475 PQ
Candleholders,
4"

0472 AS
Save 3%
12 Pc. Field Flowers/
Champagne Satin
Assortment

4751 PI
Vase, 6"
Family Signature
Piece
(Shelley Fenton)

9303 PQ
Lamp, Poppy,
20"

9451 PQ
Bud Vase,
Faberge,
7-8 1/2"

3429 PQ
Comport,
Cactus,
5 1/2"

2948 PI
Basket, 8"

8257 PQ
Vase,
Peacock, 8"

5151 PI
Bear, 3 1/2"

1145 PI
Bell, 6 1/2"

5148 PI
Mouse, 3"

1214 PI
Vase, Melon, 6"



MEADOW BEAUTY

Opalescent glass rung with crisp bands of fresh Sea Mist Green is uniquely Fenton. No other glass company combines the talents of chemists, craftsmen and artists quite like Fenton to create home accessories of collectible quality.

A series of blowing, cooling and reheating steps create the opalescent rib optic pattern on each piece. The delightful garden floral was designed by Robin Spindler.



2719 PD
Lamp,
Student,
20"

0522 AS
Save 3%
8 Pc.
Meadow Beauty
Assortment

3058 PD
Vase, Jack-in-
the-pulpit, 9"

3059 PD
Vase,
Hexagonal,
9"

1219 PD
Basket,
7 1/2"

1212 PD
Pitcher, 7"

3055 PD
Vase, 6"

5165 PD
Cat, 3 3/4"

4629 PD
Bell, 6"

5163 PD
Bird, 4"

5151 PD
Bear,
3 1/2"

5162 PD
Bunny, 3 1/2"





F E N T O N

HANDMADE IN THE U.S.A. SINCE 1905

DUSTY ROSE

Dusty Rose remains the top selling color in the Fenton line. It is a warm home accent that blends well with greens, blues and neutrals. "Priced to Sell" handmade home accessories.

FG068
Brass Base
(for 2929)



2929 DK
Rose Bowl,
8"

9071 DK
Candleholders,
8 1/2"



2789 DK
Rose Bowl, 5"



8623 DK
Rose Bowl, 6"



2705 DK
5" Rose Bowl
w/base
(Gift Boxed)



FG041
Brass Base
(for 2789)

5292 DK
Rooster,
5"



4655 DK
Vase, Daffodil,
7 1/2"

3488 DK
Candy, Cactus,
6 1/2"

FG042
Brass Base
(for 8623)



9537 DK
Basket,
6 1/2"



6563 DK
Basket,
4 1/2"

5290 DK
Slipper, Cat, 6"



5275 DK
Bunny, 2 3/4"



5265 DK
Rooster, 2 3/4"



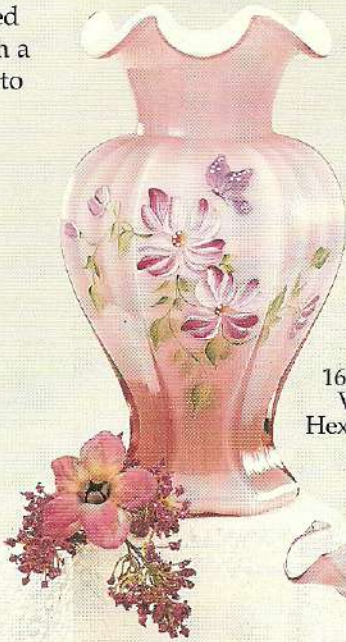
9265 DK
Bell, Butterfly,
7"

ADUSTY ROSE AND ASTERS ON ROSE OVERLAY

Glistening clear Dusty Rose layered over a core of pristine Milk glass. Fenton craftsmen blow this lovely combination and Martha Reynolds designed pretty Asters with a visiting butterfly to complement each piece.



9408 DK
Welcome
Light, 10"



1648 DP
Vase,
Hexagonal,
9"

0531 AS
Save 3%
23 Pc.
Dusty Rose/
Asters
Assortment



1509 DP
Lamp,
18"

1940 DK
Pefume
w/ Stopper,
8 1/2"



1562 DP
Pitcher,
7 1/2"



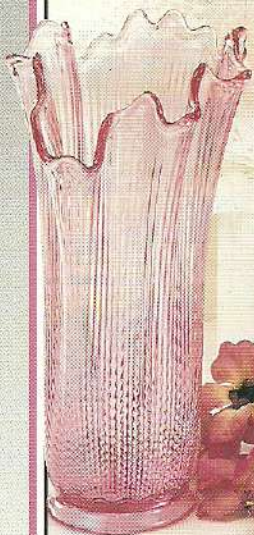
3076 DP
Basket, 8"



1683 DP
Vase, Aurora, 7"



6830 DK
Basket,
Silverton,
7 1/2"



6855 DK
Vase, Handkerchief,
6" - 8"



5170 DK
Butterfly w/
stand, 4"



9596 DK
Votive, 2-way,
4 1/2"



9144 DK
Ringholder, 3"



DUSTY ROSE

The Embossed Rose pattern was introduced into the Fenton line in the 1960's. It was inspired by a large antique rose comport made by the U.S. Glass Company of Pittsburgh, PA. Dusty Rose pieces in the Embossed Rose pattern continue as top-sellers in the Fenton line.



2053 DK
Vase, Drapery,
8"



9237 DK
Basket, Rose, 7 1/2"



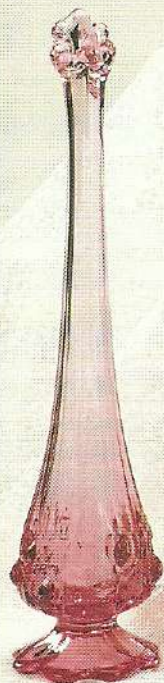
9219 DK
Lamp, Gone
with the Wind,
23"



9223 DK
Comport,
Rose,
6 1/2"



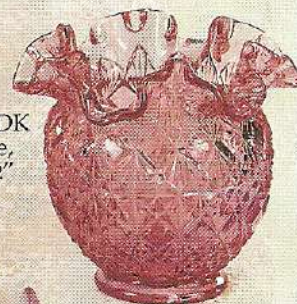
9225 DK
Bowl, Rose, 9 1/2"



9256 DK
Bud Vase, Rose, 11"



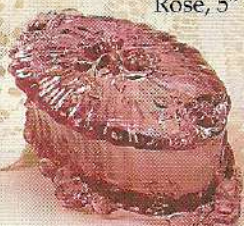
5783 DK
Trinket,
Rose, 5"



9157 DK
Vase,
4 1/2"



9531 DK
Nutdish, Strawberry, 4 3/4"



9295 DK
Slipper, Rose,
6"



9262 DK
Bell, Rose, 6"



5148 DK
Mouse, 3"



HANDPAINTED TRELLIS

0533 AS
Save 3%
9 Pc. Trellis
Assortment

Using a paint formula infused with gold, Martha Reynolds has designed flowers that sprawl happily across the lattice surface. Fired for permanence, they cool to a lovely fuchsia.

A white trellis is captured in French Opalescent glass. Molten Dusty Rose glass is then quickly spun onto the top edge before each piece is fluted and formed by hand.

2793 DX
Lamp,
Diamond
Optic, 18"

7608 DX
Hurricane Lamp, 11"

1703 DX
Lamp,
Gone with
the Wind,
24"

1144 DX
Basket,
Lily, 8"

5136 DX
Elephant, 3 1/2"

5163 DX
Bird, 4"

1145 DX
Bell,
6 1/2"

1129 DX
Vase, Diamond
Optic, 7"

4755 DX
Vase,
4 1/2"

1132 DX
Pitcher, Diamond
Optic, 7"

5165 DX
Cat, 3 3/4"



SEA MIST GREEN

Sea Mist Green brings together the beauty of nature and the fluid lines of Fenton handmade glass moulds in one stunning color statement. Essential as a home decorative accessory, Sea Mist Green creates gifts which are always welcome.

1649 LE
Vase, Feather,
9 1/2"

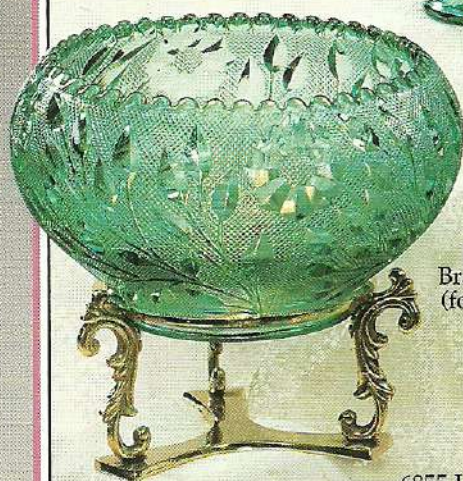


9071 LE
Candleholders,
8 1/2"



9256 LE
Bud Vase,
Rose, 11"

2929 LE
Rose Bowl, 8"



FG068
Brass Base
(for #2929)



6539 LE
Basket,
Leaf, 10"

5136 LE
Elephant,
3 1/2"



6855 LE
Vase, Handkerchief,
6" - 8"



6830 LE
Basket,
Silver-toned,
7 1/2"

2789 LE
Rose Bowl,
5"



FG041
Brass Base
(for #2789)



5220 LE
Pig, 2 3/4"



6761 LE
Bell, Paisley, 7"



5292 LE
Rooster, 5 1/2"



9578 LE
Votive,
2-way,
4 1/2"



MORNING GLORIES ON SEA MIST GREEN

Morning Glories, reminiscent of a simpler time, vine around Fenton's popular Sea Mist Green glass. Strikingly delicate and beautiful, yet familiar and comfortable, Morning Glories will enhance your Fenton collection. Designed by Robin Spindler.

0534 AS

Save 3%

18 Pc.

Sea Mist Green/
Morning Glories
Assortment

1693 L3
Vase, 9"



9408 LE
Welcome Light,
10"



1600 L3
Lamp, 20"



2766 L3
Basket,
8"



Retired



9667 L3
Bell, 7"



2776 LE
Basket,
Teardrop,
4 1/2"



9551 LE
Candy w/
Cover,
6 1/2"



3265 L3
Pitcher, 6 1/2"



5165 LE
Cat, 3 3/4"



5290 LE
Slipper, Cat, 6"

9144 LE
Ringholder, 3"



2731 LE
Basket, Lamb's
Tongue, 6"



5148 L3
Mouse, 3"



5170 LE
Butterfly w/stand, 4"



FENTON



PLUM AND SWEETBRIAR ON PLUM OVERLAY

Take highly collectible Fenton Plum, combine it with a fine layer of Milk Glass and add the skills of a Fenton hand-decorator and you find perfection! Sweetbriar on Plum Overlay creates a feeling of richness and opulence found in the best collectibles. Designed by Frances Burton.

0535 AS

Save 3%

9 Pc.

Plum /Sweetbriar
on Plum Overlay
Assortment

1648 P9
Vase,
Hexagonal,
9"



2800 P9
Lamp,
20"



1562 P9
Pitcher,
7 1/2"



4648 P9
Basket, Melon, 9"
Family Signature,
Lynn Fenton



2787 PL
Basket,
8"



9229 PL
Comport,
Empress, 6 1/2"



1560 P9
Vase, 7"



6558 PL
Basket,
Diamond, 4 1/2"



1789 PL
Vase,
Melon, 6"



5170 PL
Butterfly w/stand, 4"



9578 PL
Votive, 2-way,
4 1/2"



6761 PL
Bell, Paisley, 7"



9295 PL
Slipper, Rose, 6"



PANSIES

An expert craftsman deftly spins a molten ring of Plum on the edge of pristine Milk Glass. Art in motion, he smooths it to an even circle before quickly forming the piece into its final shape.

0532 AS . . . Save 3%
11 Pc. Plum and Pansies on Milk Assortment

Frances Burton has captured the beautiful shadings and slender stems that are the hallmark of America's favorite perennial.



6701 PF
Lamp,
Paisley,
20"



6585 PF
Basket,
10 1/2"



9450 PF
Vase, Melon,
8 1/2"



2739 PF
Comport,
Empress,
6 1/2"



Retired



Retired



9295 PF
Slipper, 6"



5165 PF
Cat, 3 3/4"



1145 PF
Bell, 6"



5148 PF
Mouse, 3"

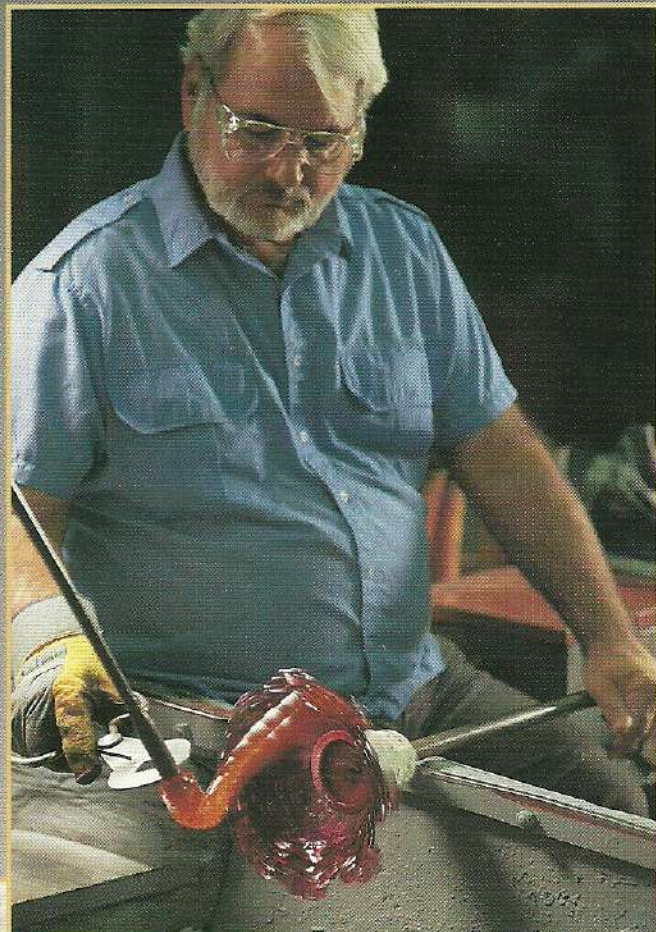
BLOWER



F E N T O N



HANDMADE IN THE U.S.A. SINCE 1905



HAND DECORATOR



HANDLER



FINISHER