



1996 GENERAL CATALOG



F E N T O N

SINCE 1905

AMERICA'S FINEST HANDMADE GLASS IN COLOR



TABLE OF CONTENTS

1 Family Signature Series	30 Plum
2 - 3 Historical Collection - Opaline	31 Handpainted Pansies
4 Medallion Collection	32 Golden Flax on Cobalt
5 Designer Series	32 - 34 . . . Cobalt
6 Collectible Eggs/ Folk Art Boxes	33 Mountain Berry on Gold Overlay
8 Champagne Satin	36 Rose Bowls
9 Meadow Beauty	37 Candle Items: Welcome Lights, Fairy Lights, 2-Way Votives, Candlesticks
10 Vining Garden on Sea Mist Green	38 Anniversary - Fenton Colors
11 - 12 . . . Sea Mist Green	39 Anniversary - Language of Love
13 Kristen's Floral	40 Angels: Heavenly Companions, Guardian Angels
14 Designer Focus - Jon Saffell	41 Birthstone Bears, Calendar Cats
16 Pansies on Cranberry	42 Slippers: Secret Slippers, Slipper Asst.
17 - 18 . . . Cranberry	43 Bell Medley
19 Cranberry Lamps/ Rose Garden & Milk Glass Lamp	44 Assortments: Pets, Butterflies, Salt & Pepper Sets
20 Rose Garden	45 Assortments: Mini Baskets, Bells, Ringholders
21 Red Carnival	46 - 47 . . . Lamps
22 - 23 . . . Cranberry Opalescent	48 - 49 . . . Educational Materials
24 Ruby	
26 - 28 . . . Dusty Rose	
27 Asters on Rose Overlay	
29 Handpainted Trellis	

THE FENTON FAMILY

From the late 1940's, the second generation was at the helm, with Frank M. as president and Wilmer C. "Bill" as vice-president. In the late 1970's Bill assumed the presidency and Frank acted as chairman of the board. The leadership of Fenton was passed to the third generation in 1986, where it remains today. Currently George W., the son of Frank M., is president and joining him are ten other family members.



Back Row: (left to right) Don A. Fenton (Vice-President, Sales), George W. Fenton (President), Mike D. Fenton (Purchasing Manager & Safety Director), Tom K. Fenton (Vice-President, Manufacturing), Randall R. Fenton (Treasurer, Fenton Gift Shop). **Middle Row:** Wilmer C. "Bill" Fenton (Chairman of the Board), Frank M. Fenton (Historian). **Bottom Row:** Lynn E. Fenton (Sales & Marketing Specialist), Christine L. Fenton (Data Processor, Fenton Gift Shop), Shelley Fenton Ash (Graphics Manager, Key Accounts), Nancy Fenton (Director of Design).

FAMILY SIGNATURE SERIES

A family tradition begun in 1905 lives on. Frank Leslie Fenton founded Fenton Art Glass in 1905 as a decorating company. He began producing handmade glass in Williamstown, West Virginia in 1907. An artistic and creative man, F.L. Fenton strove to develop new and unusual colors and treatments to keep Fenton in the forefront of the handmade glass industry.



Handcrafted
in the U.S.A.
since 1905



5357 TE
Vase, 8 1/2"
George Fenton, Third Generation
President

F.L. Fenton's enthusiasm and pride have been carried down through the second, third and fourth generations of the Fenton Family. The Family Signature Series is comprised of a few select pieces that represent the glass worker's and glass decorator's finest work.



3065 DP
Pitcher, 6 1/2"
Lynn Fenton, Fourth Generation
Sales & Marketing Specialist

Numbered and dated 1996, these pieces will be inscribed for a limited time* with the signature of a member of the Fenton family who helps carry on the tradition begun in 1905.



5585 PF
Covered Box, 5"
Shelley Fenton, Third Generation
Graphics Manager, Key Accounts



1563 PD
Vase, Feather, 11"
Nancy Fenton, Third Generation
Director of Design

F E N T O N

A Continuing
Celebration in
Fine Glass

SEE LIMITED EDITION SECTION
ON ORDER BLANK



3076 KT
Basket, 8"
Don Fenton, Third Generation
Vice-President, Sales

* Limited to
Sales
through
April 30, 1996.



HISTORIC COLLECTION

BLUSH ROSE ON OPALINE

The 1996 Historic Collection captures the colorful beauty of a fine opal. The Diamond Lace pattern showcased in this collection was first produced by Fenton in 1948.

To coordinate with this historic pressed pattern, we've selected eight blown items in a Diamond Optic pattern. Each of these is handpainted with Blush Rose, designed by Martha Reynolds.

0435 AS . . . Save 3%
11 Pc. Historic
Assortment

1795 TE
Vase, Tall
Feather, 11"

1705 TE
Lamp, 24"

5367 TE
Pitcher, 6 1/2"

7701 TE
Cruet w/ Stopper, 7"

1146 TE
Vase, Pinch, 7"

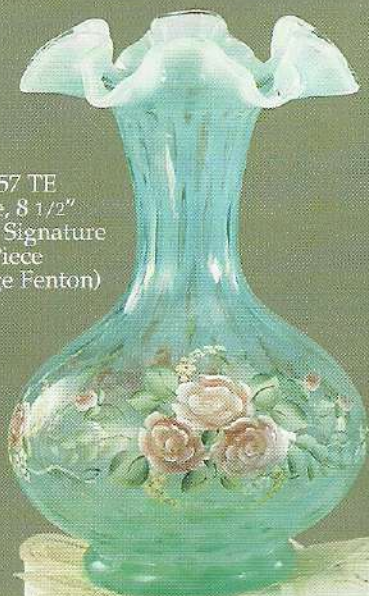
HISTORIC COLLECTION

OPALINE

Opalescent glass requires special cooling and re-heating steps to coax out the creamy white color from the transparent blue formula. Only Fenton creates Historic glass formulas and shapes them by hand.

Jon Saffell designed the second edition of Fenton Limited Edition Miniatures, an epergne in the Diamond Lace pattern, to premier in the 1996 Historical Collection.

5357 TE
Vase, 8 1/2"
Family Signature
Piece
(George Fenton)



4854 TG
Comport, Diamond
Lace, 6 1/2"



4808 TG
Epergne,
Diamond Lace,
10"



4833 TG
Basket, 6"



4835 TG
Basket, Diamond
Lace, 9 1/2"



4806 TG
Mini Epergne, 4 1/2"



9499 TG
Logo, 2 1/2"h.



SEE LIMITED EDITION SECTION
ON ORDER BLANK

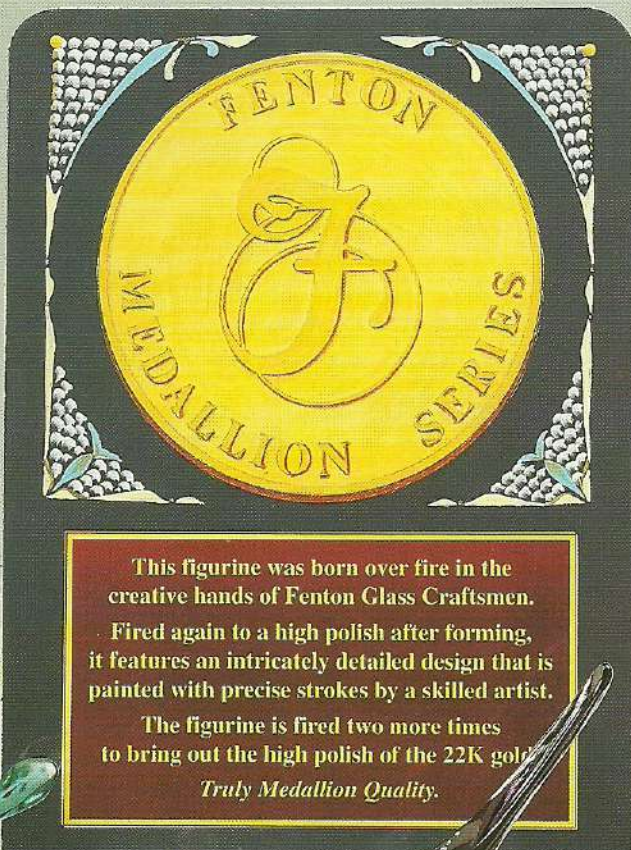
FENTON



MEDALLION COLLECTION

0612 AS . . . Save 3%
8 Pc. Medallion
Collection
Assortment

FG079
Counter Card



Each figurine was born over fire in the creative hands of Fenton glass craftsmen. Fired again to a high polish after forming, it features an intricately detailed design that is painted with precise strokes by a skilled artist. The figurine is fired two more times to bring out the high polish of the 22k gold. Truly Medallion Quality.

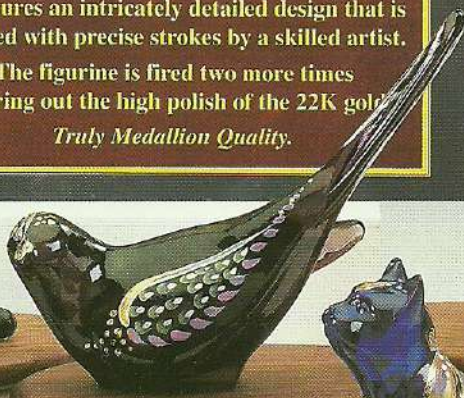
Each piece is accompanied by a wooden base with the Fenton Medallion Collection Seal on the bottom. Wonderful gifts for the man or woman who appreciates fine craftsmanship.



5226 Y6
Fox, 6"
on wooden
base



5160 Y3
Fawn, 3 1/2"
on wooden
base



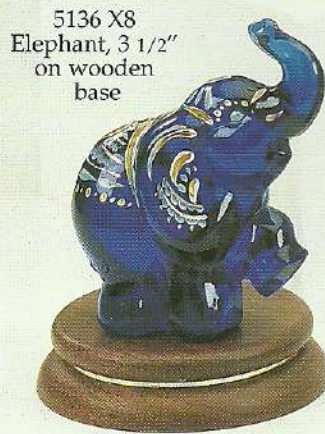
5197 Y5
Happiness Bird, 6"
on wooden base



5258 Y8
Owl, 6"
on wooden
base



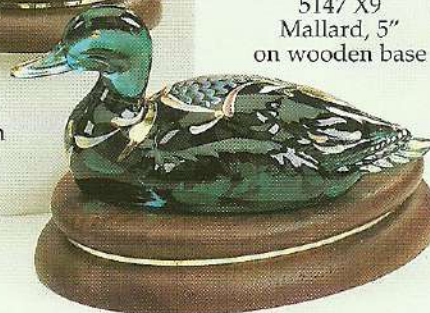
5243 Y7
Cat, 3 1/2"
on wooden
base



5136 X8
Elephant, 3 1/2"
on wooden
base



5163 Y4
Bird, 4"
on wooden base



5147 X9
Mallard, 5"
on wooden base

DESIGNER SERIES

A collection of Limited Edition Bells featuring the fine art of four Decorating Designers from Fenton. Fenton is proud of its team of talented designers. They study design trends and experiment with new materials and techniques as they strive to bring you fresh, exciting products each season. They work closely together providing tremendous energy to the design process.

FRANCES BURTON

Frances' Designer Bell showcases one of her favorite themes; fruit with elegantly painted leaves.



Frances has been active in Decorating Design since 1984 and was promoted to supervisor of the Decorating Department in 1991. While she has little time to design, she still manages to create some of the most exciting products offered by Fenton. In 1995 Frances designed both the "Daybreak" Burmese lamp and the "Butterfly and Floral" reverse painted lamp.



4568 EB
Bell, Gilded Berry, 6 1/2"

ROBIN SPINDLER

The gardenia Robin created for this series is almost three dimensional in depth. It has a soft, matte velvety finish not unlike a living Gardenia.



Robin Spindler joined the team as a designer/trainer in 1995. She has worked at Fenton since 1979 in various capacities. Robin was enthused when asked to help with designing new patterns and training the decorating staff to paint them. Robin loves wildlife, gardening and outdoor experiences. For 1996 she designed the Folk Art boxes and Meadow Beauty.



7562 PP
Bell, Gardenia, 7"

KIM PLAUCHE

Kim prefers to paint florals and her happy spirit is reflected in the Wild Rose design she has created for this collection.



Kim's lively sense of humor keeps spirits up in the Design Department. This high energy designer/trainer began working as a decorator in 1979 and became a trainer 3 years ago. Kim enjoys working with new decorators and encouraging them as they learn to paint on glass.



7667 HW
Bell, Wild Rose, 5 1/2"

0115 PK
4 Pc. Designer Series
Prestack

MARTHA REYNOLDS

Martha's Designer Bell features the raised beading and shaded backgrounds that are two of the signatures of her style.



Martha loves developing new techniques to use in decorating glass. Her latest project is raised paste enamels and we hope to see the results later in 1996.

She has been a Fenton designer for 5 years. In 1995 Martha designed five of the six 90th Anniversary Burmese pieces and four Connoisseur Collection items!



4564 IN
Bell, Floral Medallion, 6"

LIMITED TO 2500 PIECES EACH

SEE LIMITED EDITION SECTION
ON ORDER BLANK

F E N T O N



Folk Art Boxes

4680 NA
Box, Rooster,
8 1/2"

4683 NB
Box, Bunny, 7"

5186 NH
Hen on Nest, 5"

Robin Spindler's love of American Folk Art shines through her designs for these beautiful boxes from Fenton. Using three different decorating techniques, each box evolves from a solid Ivory glass base into a detailed work of art. Air brushing, handpainting, and hand rubbed gilding are required to create each handmade box.

0559 AS
4 Pc. Folk Art Box Assortment

SEE
ASSORTMENT
SECTION
ON ORDER
BLANK

9922
Display Unit

Collectible Eggs LEAF-BASE EDITION

Each egg is handformed by a skilled glass craftsman. The detailed handpainted designs require two painting and firing steps before the artist proudly signs and numbers each egg. A tag with the history of Collectible Eggs is included with each gift boxed egg.

Each Egg on Stand is
4" in Height

5145 F2

5145 F1

5145 F3

5145 F4

5145 F5

5145 F7

5145 F6

LIMITED
TO 2500 PIECES
EACH.

0611 PK
14 Pc. Collectible Egg
Prepack
Includes 2 each of 7
eggs (one of which is
Free - 5145 F2)
plus a display unit.

SEE LIMITED
EDITION SECTION
ON ORDER BLANK

F E N T O N



Donna Robinson
Glass Decorator



CHAMPAGNE SATIN

New for 1996, Champagne Satin fits the color direction in home furnishings. A light, neutral color with shimmering presence, Champagne Satin is an opalescent color. After each piece is pressed, it is allowed to cool slightly. It is then re-heated before the finisher gives it a final flare or crimp. Re-heating the cooled glass causes the edge to strike white. A lovely complement for natural tones, it requires 2 re-heating steps to create its satin luster.

0553 AS 12 Pc. Champagne Satin Assortment

2782 PQ
Vase, Feather,
11"



8484 PQ
Candy w/
Cover, Lily of
the Valley, 9"

8450 PQ
Vase,
Handkerchief,
6"-8"

8453 PQ
Rose Bowl, Lily of
the Valley, 5 1/2"

8437 PQ
Basket, Oval,
Lily of the
Valley, 8"



5170 PQ
Butterfly w/
Stand, 4"



8265 PQ
Bell, Lily of the Valley, 6"



2731 PQ
Basket,
6"



2931 PQ
Slipper, Paisley, 5"

MEADOW BEAUTY

Opalescent glass rung with crisp bands of fresh Sea Mist Green is uniquely Fenton. No other glass company combines the talents of chemists, craftsmen and artists quite like Fenton to create home accessories of collectible quality. A series of blowing, cooling and re-heating steps create the opalescent rib optic pattern on each piece. The delightful garden floral was designed by Robin Spindler.

0427 AS . . . Save 3%
8 Pc.
Meadow Beauty
Assortment

1563 PD
Vase, 11"
Family Signature
Series Piece
(Nancy Fenton)



3215 PD
Lamp, 21"



3058 PD
Vase, Jack-in-
the-Pulpit,
9"



1213 PD
Vase,
4 1/2"



1219 PD
Basket, 7 1/2"



5162 PD
Bunny, 3 1/2"



5163 PD
Bird, 4"



1212 PD
Pitcher, 7"



4629 PD
Bell, 6"

SEE PD ON ORDER BLANK

FENTON



Vining Garden AND Sea Mist Green

Sea Mist Green . . . a soft, silvery green inspired by nature. Vining Garden was designed by Frances Burton to appear as a flowering vine draped gracefully around the glass. She developed a new decorating technique to apply the white and fuchsia enamels in one smooth stroke so each flower looks as nature intended.

0426 AS . . . Save 3%
16 Pc. Sea Mist Green/
Vining Garden
Assortment



1689 FP
Vase,
9 1/2"



6702 FP
Lamp, Paisley,
20"



1133 FP
Basket, 7"



2766 FP
Basket, 8"



2789 LE
Rose Bowl, 5"



3265 FP
Pitcher, 6 1/2"



8450 LE
Vase, 6" - 8"



9667 FP
Aurora Bell, 7"

6006 FP
Salt & Pepper, 2 1/2"



5163 FP
Bird, 4"



FG041
Brass Base
(for 2789)

9295 FP
Slipper, 6"



SEA MIST GREEN



Handmade in
the U.S.A.
since 1905

2929 LE
Rose Bowl,
8"



FG068
Brass Base
(for 2929)

1649 LE
Vase, Feather,
9 1/2"



8623 LE
Rose Bowl,
6"



FG042
Brass Base
(for 8623)



9337 LE
Basket, Leaf, 9 1/2"



9408 LE
Welcome Light,
10"

9578 LE
Votive,
2-way,
4 1/2"



9295 LE
Slipper, Rose,
6"



9531 LE
Nutdish,
Strawberry,
4 3/4"



5170 LE
Butterfly
w/Stand, 4"



2731 LE
Basket, Lamb's
Tongue, 6"



2776 LE
Basket, Teardrop,
4 1/2"

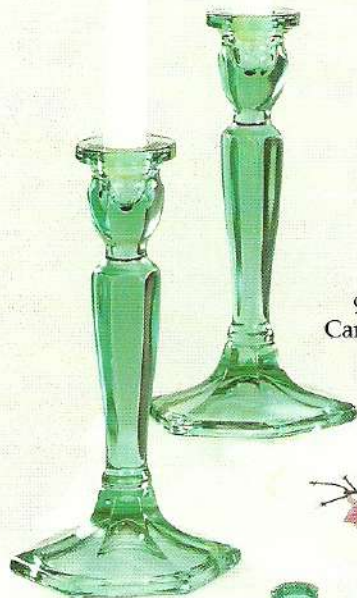
SEE LE ON ORDER BLANK

FENTON



SEA MIST GREEN

Sea Mist Green is a basic in home decorating so we have chosen it to showcase several new country designs. Our large and small Folk Art roosters, cruet, revere bowl, and pitcher are new and tie into that simpler, more classic style that is so popular.



9071 LE
Candlesticks,
8 1/2"



1686 LE
Pitcher, 10 1/2"



2925 LE
Bowl, Revere, 9 3/4"



6761 LE
Bell, Paisley,
7"



9551 LE
Candy w/
Cover, 6 1/2"



1674 LE
Cruet, 7 1/2"



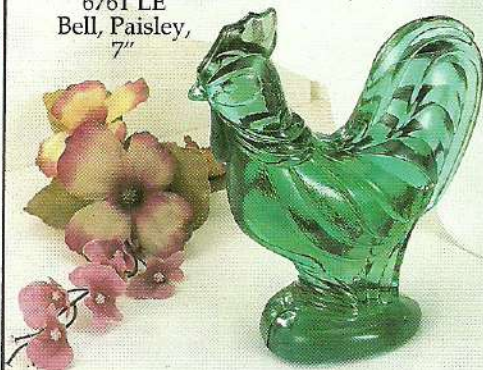
5257 LE
Rooster,
8 1/2"



5186 LE
Hen on Nest,
5"



2775 LE
Basket, Diamond
Fan, 4 1/2"



5292 LE
Rooster, Folk Art, 5 1/2"



5136 LE
Elephant, 3 1/2"



5165 LE
Cat, 3 3/4"



9144 LE
Ringholder, 3"

KRISTEN'S FLORAL

Soft Ivory Satin glass is brought to life with raised pink and peach enameled flowers highlighted with 22k gold. Each piece is painted, fired, painted with gold and fired again. A painstaking process, but well worth it to complete this lovely design created by Martha Reynolds.

0436 AS . . . Save 3%
12 Pc. Kristen's
Floral
Assortment

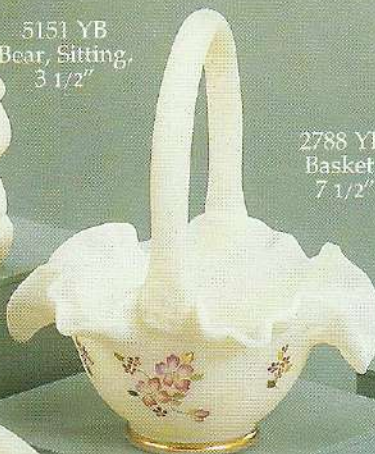
3559 YB
Vase,
Spanish
Lace, 7"



5151 YB
Bear, Sitting,
3 1/2"



2788 YB
Basket,
7 1/2"



2791 YB
Lamp,
21"



3522 YB
Comport, Spanish
Lace, 7 1/2"



8691 YB
Clock, 4 1/2"



7241 YB
Vase, 4"



9295 YB
Slipper, Rose,
6"



9266 YB
Bell, Drape,
4 1/2"



5780 YB
Trinket, Heart, 3 3/4"



3535 YB
Basket, Lily, 7"



5158 YB
Elephant,
3 1/2"



6761 YB
Bell, Paisley,
7"



SEE YB ON ORDER BLANK

FENTON



DESIGNER FOCUS...

Fenton designer JON SAFFELL

Jon Saffell has been designing for Fenton since May of 1994. He has an extensive background in graphic art, sculpting and glass design.



He has always been interested in art and was known for his sculpting abilities in high school. Fostoria Glass Company called him while still a student and asked if he would be interested in a position as model maker on their staff. Jon took the position while continuing his art education at West Liberty College. He designed for Fostoria for 29 years until they sold the company in 1986 and closed the manufacturing facility.

While Jon is proficient in drawing, his favorite art form is sculpture. He works with clay to make a "3 dimensional sketch." He then creates the actual piece by carving solid plaster.

There are very few artists who can successfully design for glass production. The designer must understand how the form will release from the mould as well as how it will appear when transparent. Jon loves the medium as he explains, "Every artist has a favorite medium in which to work and hopefully, to excel. The medium I have chosen as my life's work is glass. Because of its transparent or translucent nature, glass is a particularly difficult medium for which to create designs that are complementary to the material. It is a pleasure to work with the skilled glass artisans at Fenton and to see my ideas and inspirations come to life."

Jon has not been with us long, but he has created several exciting new pieces. His experience in glass design has brought a new dimension to Fenton products and to the speed with which we move from drawing to finished glass.



9408 DK
10" Pineapple
Welcome Light
(See page 37)



9337 LE
9 1/2" Leaf Basket
(See page 11)



5292 LE
5 1/2" Folk Art
Rooster (See page 12)



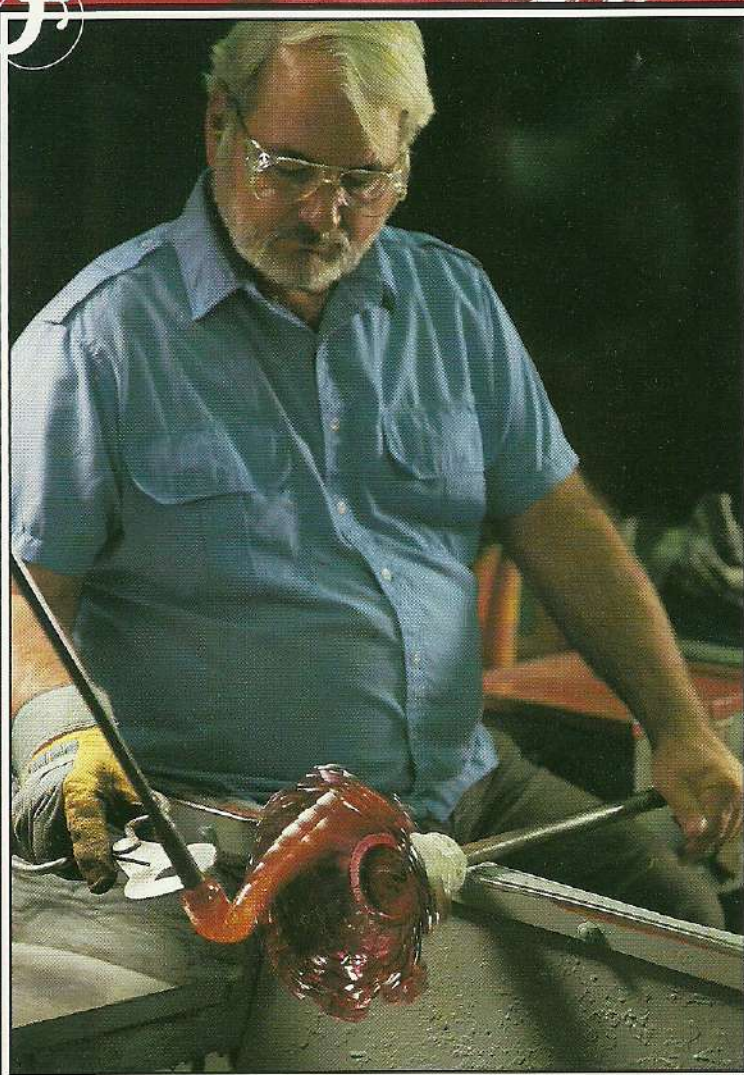
4806 TG
4 1/2" Mini Epergne
(See page 3)

6800 DZ
3 3/4" Mini Punch Bowl Set
(See '96 Sentiments
Brochure, page S1)



F E N T O N

F E N T O N



Ron Bayles, Handler
(Ringer, Finisher)

PANSIES ON CRANBERRY

An added dimension to our most collectible glass. Pure gold pansies with velvety touches of cream and violet. Designed by Frances Burton for all who love Cranberry Glass.

2939 CC
Rose Bowl, 5 1/2"



FG042
Brass
Base

0316 AS ... Save 3%
6 Pc. Pansies on Cranberry
Assortment



1540 CW
Lamp, 23 1/2"



1554 CW
Vase, Rib, 9"

1639 CW
Basket, 8"



1672 CW
Pitcher, Rib, 11"



1685 CW
Vase, Tulip,
7 1/2"



1214 CC
Vase, Melon, 6"



1700 CW
Fairy Light, 2 Pc.



1222 CC
Vase, Swirl, 6"



1557 CW
Vase, Rib, 4"



C

RANBERRY

Cranberry enthusiasts find Fenton's Cranberry to be authentic and exceptional in quality. Made with pure gold formula the way it was done 100 years ago, and fire struck, the rich cranberry hue is heightened when encased in a layer of sparkling crystal.

0418 AS . . . Save 3%
8 Pc. "New" Cranberry
Assortment



1218 CC
Vase,
Feather, 9 1/2"



2750 CC
Vase, Melon, 8"



1353 CC
Vase,
Tulip, 10"

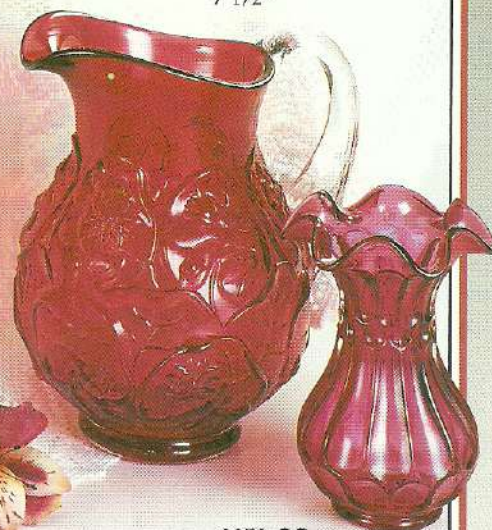


2782 CC
Vase,
Feather,
11"



6701 CC
Lamp,
Paisley, 20"

8464 CC
Pitcher, Waterlily,
7 1/2"



9050 CC
Vase,
Flute & Dot, 5 1/2"



3132 CC
Basket, 8 3/4"



2566 CC
Jug, Daisy, 6"

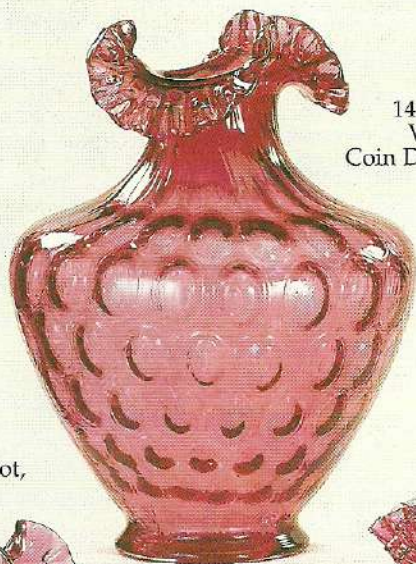
SEE CC ON ORDER BLANK

FENTON



Made with gold ruby in the age old manner

0417 AS . . . Save 3%
11 Pc. Cranberry Top Sellers
Assortment



1443 CC
Vase,
Coin Dot, 10 1/2"



3161 CC
Vase,
Spiral, 11"

1478 CC
Vase, Coin Dot,
8 1/2"



9464 CC
Basket, Jacqueline,
8 1/2"



9442 CC
Bowl,
Jacqueline,
9 1/2"



2762 CC
Basket,
Poppy, 8 1/2"



9752 CC
Vase, 7 3/4"



1432 CC
Pitcher, 6 1/2"



1434 CC
Basket, Coin Dot, 8"



2557 CC
Vase, Daisy, 6"



9126 CC
Rose Bowl, Poppy, 3 1/2"

HANDBLOWN ART GLASS LAMPS



Handmade in
the U.S.A.
since 1905

SEE CC
ON ORDER BLANK

9201 CC
Lamp, Pillar, 30"



3504 CC
Lamp, GWTW, 23"



9218 CC
Lamp, Rose, 20"

SEE EG AND MI ON ORDER BLANK

19



7412 EG
Lamp, Student, 21"



3808 MI
Lamp, Hobnail,
GWTW, 25"

Fenton Lamps . . .
glassmaking
artistry at its finest.
Build your display
around your
Fenton lamps.
They add warmth
to any room and
draw customers to
your displays.
Handblown by the
master craftsmen
at Fenton.

F E N T O N



ROSE GARDEN

0423 AS . . . Save 3%
13 Pc. Rose Garden Assortment

Cottage style with up-to-date details. Notice the crisp, neat bands on each piece as well as the tiny rose-buds sprinkled over the surface. Designed by Frances Burton.

7255 EG
Vase, Tulip, 10"

7429 EG
Footed
Comport, 6"

2791 EG
Lamp, 18"

6585 EG
Basket,
10 1/2"

7451 EG
Vase,
Melon, 6"

7254 EG
Vase, 4 1/2"

5163 EG
Bird, 4"

7484 EG
Candy
Box, 5"

6464 EG
Pitcher, 5 1/2"

4638 EG
Clock,
Victorian, 5"

5151 EG
Bear, Sitting,
3 1/2"

5780 EG
Trinket, Heart,
3 3/4"

5158 EG
Elephant, 3 1/2"

1773 EG
Bell, 6 1/2"

5165 EG
Cat, 3 3/4"

2737 EG
Basket, 7"

9295 EG
Slipper, Rose,
6"

RED CARNIVAL AND DAMASK ROSE ON RED CARNIVAL

Fenton enters the 10th decade with a special collection of historic patterns for those who know Carnival Glass. The Grape and Cable Tobacco Jar made first by Fenton in 1968, was a reproduction of an old Northwood piece (Circa 1910-1915). Other special items include the Ribbon Tie basket, Verlys fish bowl, as well as five handpainted Damask Rose pieces designed by Frances Burton.

0429 AS . . . Save 3%
11 Pc. Red Carnival
Assortment

5258 RN
Owl, 6"

5351 RC
Vase, Melon, 8"

2936 RC
Basket, 8"

9307 RC
Lamp,
Student, 20"

7538 RN
Basket,
Ribbon Tie,
8 1/2"

9188 RN
Tobacco
Jar, Grape
& Cable,
7"

9529 RN
Bowl, Verlys, 9"

9590 RC
Boot, 2 1/2"

9265 RN
Bell, Butterfly,
7"

5182 RN
Hen on Nest, Large, 6 1/2"

5220 RC
Fig, 3"

1231 RN
Basket, Spanish
Lace, 7 1/2"

SEE RC AND RN ON ORDER BLANK

F E N T O N



3308 CR
Lamp,
Hobnail,
GWTW,
25"



1801 CR
Lamp,
Fern, 21"



CRANBERRY PALESCENT

This highly collectible glass was first developed during the Golden Age of Glass between 1860 and 1900. Fenton re-created the formula in 1936 and we continue to offer new ideas in traditional patterns. These patterns are created by covering gold ruby with French Opalescent and placing the molten glass into carved moulds.



1174 CR
Lamp, Student, 22"

0420 AS . . . Save 3%
7 Pc. Cranberry Opalescent
Hobnail Assortment

3346 CR
Basket, 8 1/2"



1155 CR
Vase, 7 1/2"



3861 CR
Rose Bowl, 4 1/2"

3380 CR
Fairy Light,
3 pc.



3348 CR
Basket, 10 1/2"



3869 CR
Oil Bottle w/ Stopper, 5"



3356 CR
Vase, Tulip, 7 1/2"



One of the rare glass treatments that is distinctly Fenton. We proudly offer it in the popular hobnail and in ribbed, twisted rib and fern optic patterns. Once the glass is blown into optic moulds, it is then carefully cooled and reheated causing the coolest sections to turn white when reheated.



3103 CR
Lamp, Rib,
20"

0419 AS ...
Save 3%
8 Pc. Cranberry
Opalescent
Optic
Assortment



1554 CR
Vase, Rib, 9"



1854 CR
Vase, Fern,
9 1/2"



3053 CR
Vase, Tulip, Rib,
11 1/2"



1531 CR
Basket, Rib, 8"



1599 CR
Vase, Rib, 5"



1869 CR
Vase, Fern, 4"



1843 CR
Vase, Fern, 7"



3064 CR
Pitcher, Rib,
8"



RUBY

Rich, Warm, Beautiful. Ruby requires an extra firing to coax the deep gem color from its depths. When a piece is first made it is a golden color called amberina. It is then reheated or struck (as we call it in glassmaking terms) and the ruby color appears. Traditionally a top-seller, it's also perfect for 40th anniversaries, Christmas, and of course, Valentine's Day.

0434 AS . . . Save 3%
12 Pc. Ruby
Assortment



9071 RU
Candleholder,
8 1/2"



9237 RU
Basket, Rose, 7 1/4"



9240 RU
Basket, Rose,
5 1/2"



9101 RU
Lamp, GWTW, 24"



9596 RU
Votive,
2-way,
4 1/2"



6761 RU
Bell, Paisley, 7"



2789 RU
Rose Bowl, 5"



FG041
Brass Base
(for 2789)



5245 RU
Cardinal, 5 1/4"



9295 RU
Slipper, Rose, 6"



2949 RU
Toothpick,
3 1/2"