

*from Fenton ...
a winter wonderland*

The serene tones of
iridized Aquamarine
Opalescent glass are
the perfect canvas for
Kim Barley's latest
handpainted design.

It is sure to evoke
memories of winter's
beauty as depicted in
favorite fairy tales.
Gaze beyond a cluster
of sweet grapes left
on the vine and
behold ... a Winter
Wonderland!



F E N T O N®

Handcrafted American Glass Artistry

www.fentonartglass.com

4751 ZT
Vase, 7 1/4"
\$99.50

5065 ZT
Cat, 5"
\$45.00

Winter Wonderland on Aquamarine

Handpainted by skilled Fenton artists, Winter Wonderland will capture your imagination. The raised crystal ice used in this breathtaking scene creates sparkling texture and remarkable depth. The Aquamarine Opalescent glass has been sprayed with metallic salts for a shimmering iridescent background. The covered Candy Box is a new design by sculptor Suzi Whitaker.



3097 ZT
Basket, 10"
\$99.50

2759 ZT
Rose Bowl/Votive, 3 1/2"
\$59.50

5160 ZT
Fawn, 3 3/4"
\$39.50

Limited Edition Snow Angel



F E N T O N

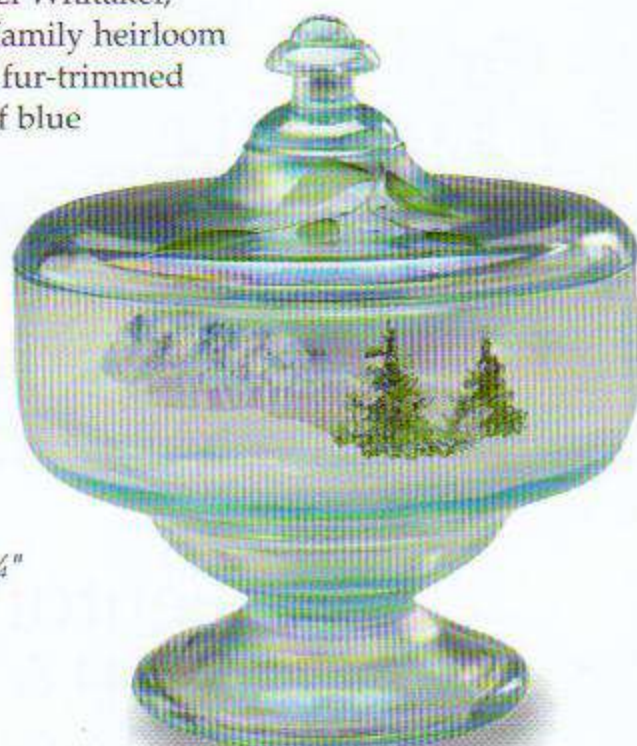
Handcrafted American Glass Artistry

www.fentonartglass.com

A brand new sculpture from Suzi Whitaker, our Snow Angel will become a family heirloom to be displayed with pride. Her fur-trimmed robe recalls the hue of blue sky in winter.



5053 JU
Snow Angel, 7 3/4"
\$79.50
Individually
numbered



4290 ZT
Candy Box, 6", \$99.50
Individually numbered; George Fenton signature

2753 9N
Vase, Handkerchief
10"
\$85.00



Blue Burmese Snowpeople

5940 NL
Snowman
Fairy Light, 7½"
"Drifty"
\$99.50



5268 NL
Snowman, 4"
"Ralph"
\$49.50



5269 NL
Snowlady, 4"
"Rosie"
\$49.50



Could snow be pink and blue? In childhood fantasies and Fenton glass, the answer is "Yes!" Our Blue Burmese glass creates an especially warm glow in the frosty blue of the Snowman Fairy Light, and the Snowman and Snowlady figurines bask in its reflection. All feature Kim Barley's iced snowflake decoration along with her detailed warm winter woollies—knitted scarf, shawl and mittens!

Canaan Valley on Cobalt Blue



6335 9M
Basket, 10½"
\$99.50



4861 9M
Vase, 7½"
\$99.50

The picturesque Canaan Valley of West Virginia is celebrated once again for Christmas 2006. Ice-covered trees and frosty woodlands come to life in this popular handpainted motif designed by Robin Spindler. Each Canaan Valley article features the West Virginia state bird, a bright red male Cardinal, within the design.



5160 9M
Fawn, 3¾"
\$39.50



5980 9M
Fairy Light, 5½"
\$77.50



5041 9M
Blue Jay, 4"
\$35.00

Gilded Harvest on Ruby

Designed by Frances Burton, our new Gilded Harvest decoration on Ruby glass employs textured paints over 22k gold, a technique that provides remarkable depth. A golden pear and purple plum combine with autumn leaves in a splendid still life creation.

The fiery fury of Fenton's furnaces creates a "liquid gold" that is captured forever in the honeyed shades of Autumn Gold. Frances Burton's handpainted motif combines leaves, berries and wheat in an elegant yet vibrant design.

Wheatberry on Autumn Gold



5980 3V
Fairy Light, 5½"
\$99.00



6839 QM
Basket, 10½"
\$99.50



5057 AM
Horse, 4", \$25.00



7087 QM
Box, Prism, 5½"
\$69.50



7737 QM
Shoe, 4½" l.
\$29.50



4353 A1
Vase, Swung
11"-13"
\$95.00



3206 3V
Vase, 9¼"
\$149.00



7689 RU
Vase, Cut Tulip, 8"
\$42.50



6780 RU
Candy Box, Paisley, 7"
\$59.50



5147 3V
Mallard, 5"
\$39.50



F E N T O N

Handcrafted American Glass Artistry

www.fentonartglass.com

Designer Purses



6477 9A
Purse, 3"
\$49.50

6477 8K
Purse, 3"
\$49.50

What better place for life's little treasures than a stylish handbag? Our new Designer Purses are perfect for whatever memories you need to tuck away! Each purse is limited to 2500 pieces.

Sculptor Suzi Whitaker designed the moulds used to make these darling purses, and our quintet of "designing women" created handpainted motifs to grace each selection. Two of the designs are featured here.



4244 JN
Lamp, Petal,
19"
\$279.50



2955 JN
Vase, 9"
\$95.00



5430 JN
Basket,
Ribbed, 8"
\$85.00

Vision on Aubergine

Deep rich Aubergine strikes an elegant note. This warm color was inspired by fashion and then quickly embraced by home decorators. Stacy Williams created a design that captures attention with complex shading. Layer upon layer of sheer color flows fluidly through breeze-touched leaves accented by a pink Kousa pod.



5469 JN
Vase, 7½"
\$65.00

5074 JN
Cat,
Grooming, 4"
\$29.50



New Red Hat for 2006

Designed by Stacy Williams, this festive Ruby hat features a flourish of feathers and a purple hatband. It's perfect for the lovely ladies in your life! Inscribed with the signature of Christine Fenton.

5385 MZ
Hat w/stand, 4½"
\$49.50



Fuzzy wuzzy ... cute and cuddly! Our adorable PJ Babies will simply snuggle their way into your heart. Our delightful doll figurine, made of Opal Satin glass, is clothed in festive red velvet to herald the holiday season.

5151 3H
Bear, 3½"
\$34.50

5151 3R
Bear, 3½"
\$34.50

*PJ Babies
and Friend*

5148 3H
Mouse, 3"
\$29.50

5064 3R
Sleeping Kitten, 3½"
\$29.50

5148 3R
Mouse, 3"
\$29.50

5233 3H
Reclining Bear, 3½"
\$34.50

5228 T6
Doll, 7"
\$59.50

Handpainted Christmas Trees

5556 QS
4"
\$39.50

5563 QS
Stylized, 7"
\$54.50

5535 QS
6½"
\$49.50

Shimmering translucent white trees with icy crystal accents are handpainted with festive berries. A great collection for a table or mantle.

Christmas Bell and Bear

7668 4E
Bell, 6½"
\$59.50

5151 5E
Bear, 3½"
\$39.50

The frosty look of our Opal Mist glass is just the right background for designer Stacy Williams to showcase her talents. Stacy's bell is dated "2006," and her Cuddle Bear is just the sweetest teddy we've ever seen!

5439 NN
Basket, 9"
"Pumpkin Patch"
\$89.50



Halloween

Our Halloween items have so much personality they will make you smile with memories of a childhood long since past. All are handpainted and signed by the artist.



5085 KY
Dog, 4"
"Bull's Eye"
\$39.50

7737 NB
Shoe, 4½" l.
\$32.50

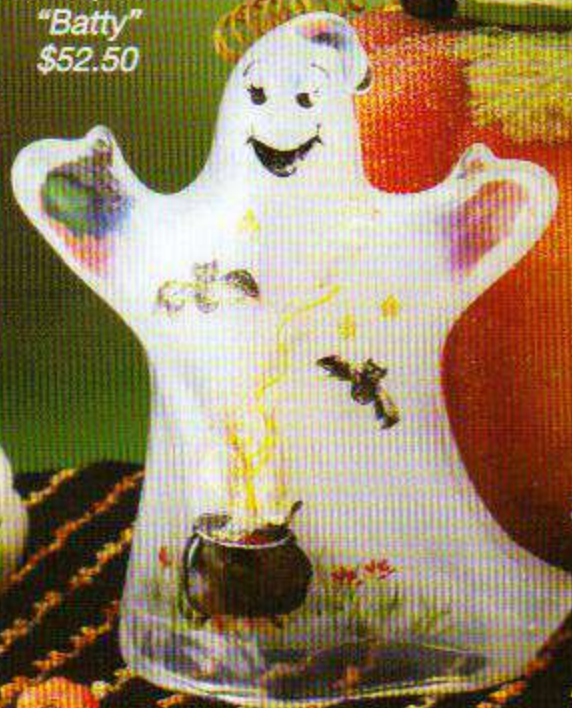


5284 WJ
Witch, 6½"
"Battella"
\$55.00

5151 QL
Bear, 3½"
"Lil' Punkin"
\$37.50



5278 TQ
Ghost, 5½"
"Batty"
\$52.50



5291 YA
Scaredy Cat, 4½"
"Hat-on-Cat"
\$36.50





F E N T O N

www.fentonartglass.com

Our sparkling Emerald Green candle jar conceals a long lasting candle perfectly. Also use it as a candy box ... or even to keep your pet's favorite treats nearby! Finally, it can be used to hold a pretty bouquet of flowers.



Catalog Exclusives



7104 EY
Candy Box/
Candle Jar, 7½"
\$55.00
(Lynn Fenton)

5386 TM
Dragon, 3¼", \$29.50
(Nancy Fenton)

Iridized Emerald Green glass has a unique character. The sparkling intaglio design Candle Jar by Jon Saffell is just right for a long-lived candle. The diminutive Dragon figurine—sculptor Suzi Whitaker's newest creation—is highlighted with glitter to delight any youngster or adult! Each is numbered and inscribed with the signature of a Fenton family member.

Handcrafted with an historic Fenton mould from the 1930s, this beautiful Azure Blue Nut Dish is yours FREE with a Fenton purchase of \$100 at the dealer whose name appears on the front of this catalog. Supplies of this special item are limited.

FREE
with any
\$100 Fenton
purchase



Clip the coupon
and visit your
Fenton dealer
soon!

4388 ML
Nut Dish, 6"
\$37.50 value!