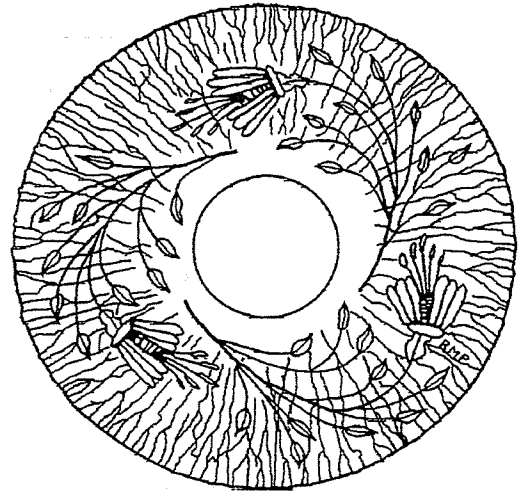


FOUNDED APRIL 21, 1974 IN DENVER, PENNA

STRETCH GLASS SOCIETY NEWSLETTER

OCTOBER, 1999

(CO-) PRESIDENTS' MESSAGE



Dear Members: This was the longest summer on our record books--both personally and environmentally! Ohio suffered from drought causing many agricultural crops to dry up and the urban landscape to lose lawns, gardens, trees and shrubs. Its' effects are still being felt by the lack of fall color in the normally brilliant Ohio hillsides.

Renée lost her Dad in July necessitating unplanned travel and expenses to Oklahoma. A few days after returning, we left on A ROAD TRIP to Houston, Texas! Not even Hades is hotter than Houston in August! To top it all off, we got back into the car (a 4-door Camry) with the two of us, our daughter, our grandchildren (2 and 4) AND our dog and headed out on an 8-hour drive to Oklahoma. Four days later we all piled back into the car and headed back to Houston. Have you ever heard of anyone being such a glutton for punishment?

We both must admit though, the summer wasn't a total wash. We managed to see many family members that we hadn't seen in years. Dave's folks and sisters all live in Houston and we hadn't seen them for a while either. His Mom had just undergone major surgery with a complete knee replacement and lower leg realignment and was faced with a lengthy recovery period.

In between some of the trips, we had the pleasure of seeing a few fellow SGS members. On our way to Texas, we were able to stop for a brief visit with Rex ("eBay") Tatum. It was wonderful seeing you again Rex! Mary Morales (another frequent eBayer) and her stepmother made a trip to our place. Mary and her husband, Nelson, have decided to make career changes and have been selling much of her Stretch Glass to help with expenses until they get going with their new jobs. She had arranged for a couple of Ohio collectors (some of her eBay customers) to meet them here, so we also got a chance to meet two new collectors. We learned that these two had already been "bombarded" with queries about whether they were members of the SGS yet! Hope it's worked!

Speaking of new members, we'd like to extend a very warm welcome to all of you. Fellow members, officers or members of the Board recruited many of you, and we have you all to thank for our growth. You are all testaments to the value of enthusiasm, education and the desire to share your glass. We hope that each and every one of you have an opportunity to attend an SGS Convention because it is absolutely so thrilling to see all of this amazingly beautiful glass and talk to others who share your love of it.

Even if you've been to Marietta, Ohio before you should really get a kick out of our **Y2K Convention!** The dates are **May 4, 5 & 6, 2000**. Our schedule has changed somewhat though from past years, so you'll want to pay special attention to your information packet when you receive it in the mail. Here's a rundown: Thursday the 4th, of course, is Members' Day highlighted by the "Stretch Dash." If you'll be bringing glass to sell, be prepared to begin setting up at 7AM! And, as in the past, **ONLY** those selling glass will be permitted inside the

© Copyright, 1999 -- The Stretch Glass Society. All rights reserved. No material may be reproduced, in whole or in part, in any form whatsoever without written permission of the Executive Board.

room for the set-up. If you are planning to BUY glass as well as sell, you will be asked to join the other anxious buyers in the Lobby at 9:45AM. The doors will open at 10AM and ALL BUYERS will "dash" for the pieces they must have. At approximately 11AM--or, following the first wave of "dashers"--set-up for displays can begin. Also on Thursday will be an afternoon seminar and we're working on a special evening tour.

If you can ONLY attend one day, make it Friday the 5th. This will be the **action-packed** day! Starting off will be the Club Display Presentation. Bill Crowl will be one of the featured display contributors again this year with his magnificent collection of Fenton Tangerine Stretch. We thought that a natural compliment of tangerine would, of course, be cobalt blue Stretch. This display will consist of examples from Central, Diamond, Fenton and Vineland glass companies. If you would like to bring or send any examples of either of these colors, please contact us so there won't be a lot of duplication.

For Friday's lunch, we're arranging a Trolley Tour/Picnic and on our return, will be our Glass ID session. **FROM 4 TO 6PM WE WILL PACK OUR GLASS so that all tables are cleared. The BANQUET will be aboard the Valley Gem Sternwheeler.** She will be docked at the pier south of The Lafayette for boarding at 7PM. The dinner cruise should take approximately two hours, so bring a sweater or jacket; it could get breezy on the Ohio River!

Saturday the 6th, will be a short convention day with the Business Meeting and Elections beginning at 9AM and immediately following will be our Y2K Whimsey Auction. The remainder of the day will be your opportunity to visit area antique malls and shops. Many of us will be congregating Saturday evening for an informal last meal together, so if you won't be heading for home until Sunday the 7th, please join us!

Tickets will be required for the Trolley Tour/Picnic (limited #) and for the Banquet Cruise, so when you get your packet in the mail, get your reservations and payment returned as soon as possible! Also in your packet will be detailed information for reserving your guestroom at The Lafayette. Not all guestroom rates are the same and if you have a tendency to become claustrophobic, be sure to tell the hotel! Remember that this IS a river boat era hotel and we think that when they added "indoor plumbing" to the individual room, they ended up with just enough room for a bed and dresser! Of course, not all of the rooms are of this size, but you may want to get your room reservation in early too!

October is looking pretty busy. Joanne Rodgers invited us to participate in the Western Reserve Depression Glass Show and Sale over the weekend of the 15th. We'll be taking some glass and some books to sell, but we'll also set-up a display about the Stretch Glass colors and lines including a video showing the stretch-making process. If any of you will be in the area of Broadview Heights (a Cleveland suburb), we'd love to have you stop by to say hello. Are you listening Gary & Cheryl, Sandy, Tom & Jean, Jim & Barbara, Paul, Les & Roxanne, Jim & Pam, and Paul & Nancy?

We're also trying to get Jan Reichling to visit us this month on her way to visit Westmoreland authority, Charles West Wilson, in Pennsylvania. In fact, any of you passing by our way are invited to visit us...as long as we get a phone call giving us a couple of hours to remove the layers of dust!

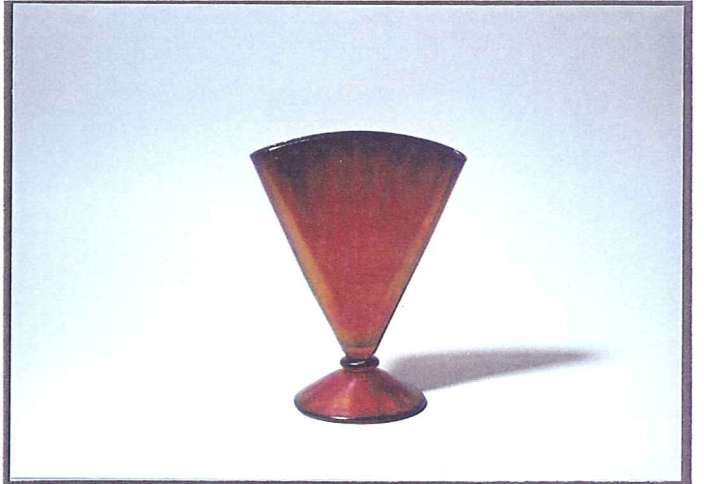
The last weekend of the month, Dave will be participating in his annual International Turf Workshop in Titisville, Florida and, naturally, Renée must go to keep him in line (well okay, to visit all the Orlando area shops/malls). Unfortunately, Dave must return to Ohio on Sunday, but Renée will be cavorting about the Florida highways and byways headed for Naples. All Florida members--this is fare warning! Sometime the first week of November, you just may get a phone call from her.

As you all know, the terms of all current Officers and three Board members expire THIS year. This is YOUR opportunity to contribute your "two bits" to the direction of the Society. Remember, the *longest* you will have to hold office is two terms (we made certain of that)! Please contact us if you want more information.

One final note--whether you will be attending the convention in Marietta or not, we would like to have YOUR input of topics, questions, concerns, or suggestions that you may have about the Society that we can add to the General Business Meeting Agenda. If there is anything that you would like to have us discuss, please let us know by sending us a letter or an e-mail stating your topic and your opinion on the subject. We will contact you to confirm it with you. We appreciate your help!

Renée and Dave Shetlar

STRETCH GLASS SOCIETY OFFICERS			
CO-PRESIDENTS:	Dave & Renée Shetlar 35 Vandeman Avenue Delaware, OH 43015-1723	SECRETARY/EDITOR:	Janet R. Reichling 1085 Taunton Court Schaumburg, IL 60193
VICE-PRESIDENT:	John Madeley 595 North 12 th Street St. Charles, IL 60174	TREASURER:	Calvin Hackeman 8965 Olde Mill Run Road Manassas, VA 20110
BOARD OF DIRECTORS			
HISTORICAL INFORMATION:	Stephanie Leonard, MA/2000	ADVERTISING/PROMOTION:	Helen Jones, VA/2001
NEWS/TECHNICAL INFORMATION:	Arna Simpson, MD/2000	WAYS/MEANS:	Jim Steinbach, OH/2000
	CONVENTION/SHOW:	Joanne Rodgers, OH/2001	
DUES: Twenty-two dollars (\$22) annually for each family -- payable to the Treasurer on April 1st			



Fenton

Vase

7 3/4" H x 6 7/8" D

Fenton

Vase

8 1/2" H x 7 3/4" D

Fenton

Fan Vase

8 1/2" H x 6 3/8" W

Imperial

Vases

4 1/2", 8 1/2" 10 3/4" & 13 1/2" H

Fenton

Vase

8 1/4" H x 5 1/2" D

Fenton

Vase

8 1/4" H x 7 1/2" D

Fenton

1504A Dolphin Bowl

4" H x 6 1/2" D

Fenton

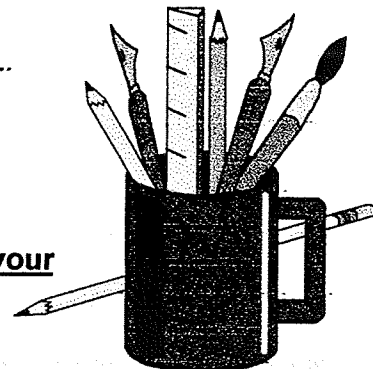
604 Aquarium Bowl

5 3/4" H x 9 1/4" D

From the Secretary/Editor's Desk

Jan Reichling

*We wish to extend our sympathy and prayers to the Burl Page Family.....
One of our Stretch Glass Members, Burl Page passed away on
July 18,1999.....he was almost 96 years of age.*



WELCOME TO OUR RENEWING MEMBERS....Thanks. Please add them to your Membership List:

William Cottrill, 615 Weber Avenue, Daytona, FL 32114 , Billcott@aol.com

Mildred Coty, 121 W. 12th Street, Parkersburg, WV 26101 -- 419-862-2405

Giulia L. Crispell, 3696 Edgemount, Troy, MI 48084 -- 810-649-5848

Gordon L. Freeman, 4158 E. Saxony Drive, SE, Grand Rapids, MI 49508 -- 616-455-2978

Darlene A. Johnson, Rt. 3 Box 33A, Phillipsburg, KS 67661 – 785-543-6550
or kldaj@ruraltel.net – (darlin-clem)

William and Doris Mahan, 3479 Cabaret Street, Port Charlotte, FL 33948 -- 813-766-0641

Casey Teppo, PO Box 1552, Superior, WI 54880 -- 715-392-9609

John & Mary Walther, Rt. 23, P.O. Box 25, Main Street, South Egremont, MA 01258 , Redbarn@bcn.net

CHANGE OF ADDRESS or TELEPHONE NUMBERS:

John & Pat Shockley, 1324 N. Roosevelt, Liberal , KS 67901 – 316-624-1124

Rex Tatum – New Area Code: -- 225-642-0977

Still available are commemorative pieces from the 1997 and 1998 conventions....15 "first quality" (1997) of the blue square dolphin comport are available and 8 "seconds" (1998) of the wisteria dolphin handled tray are available. Please contact Dave and Renee Shetlar, if you are interested.

News/Technical Information

Arna Simpson

From Eldon and Ramona Schroeder of East Dundee, IL

How did you get started collecting stretch glass, what was your first piece and where did you find it?



We were looking for various patterns of Depression Glass dinnerware for my sister while on vacation. In Kentucky we stopped at a one man antique shed. He didn't have what we were looking for, but put a black light on a Fenton topaz handled server and that was our first piece.

What is your favorite color in this glass and do you collect other colors, too?

We have collected all colors, but are partial to pink with wisteria is a close second.

Have you been to a SGS convention? Would you consider coming to Marietta next spring?

We have been to several conventions and plan to go again next year. It's always a great time to see friends and all the beautiful displays.

Tell us about your hobbies and other things you collect?

We have always enjoyed antiques and looking in shops as we travel. A number of pieces of furniture and glassware in our home are from parents and grandparents. We are interested in family history and our genealogies. Eldon enjoys gardening – mostly flowers and fruit. We enjoy traveling and have had some tours out of the country in recent years. And we love to spend time with our children and grandchildren.

Let us know about your family and do they share your love of stretch glass?

We have three married children and seven grandchildren, 2nd grade to 8th grade. Our son lives in Palm Desert, CA (a great place to spend February). Our daughters are in Seattle, WA and Grosse Pointe Woods, MI. They appreciate the antiques they have and enjoy our glass having chosen some favorites, but their time and energy is with their families right now.

Why did you join the Stretch Glass Society, is the Society meeting your needs to learn more about Stretch Glass, and do you have any ideas on how we can improve?

We joined to learn more about Stretch Glass. The Newsletter has been a big help. We love the pictures and line drawings for identifying. A big "thank you" to all involved in producing a great publication.

Ama, has been given permission by Frank Fenton to print some questions and answers published in a 1975 Newsletter, two follow.

Is it true that each glass company that made Stretch Glass had their own formula for the process or was it a "trade secret" and is it still considered so?

I don't know..... I assume that each had their own formula but you people have read the books, even Mr. Freeman I think talks about it, the people who write about Frederick Carder tell you about itthe salts of iron or tin or platinum or gold or silver, each one says some different kind of material .. strontium. There are any numbers of different metallic salts that will create an effect and I suppose we have some where there might have been a mixture of tin and iron. I don't remember our ever having using any gold, at any time, we can eliminate that from consideration. I don't think we ever used any gold in our "dope" as we called it. We used to call it "dope". So the mixture can vary, could be from company to company. I think we all tried to keep it secret, not tell anybody else just what was in there. There's a certain aura of mystery about it, you know, if you don't say anything to anybody else about it.

Was it more expensive to make Stretch Glass that pattern Carnival Glass. Were the iridizing chemicals used on Stretch the same as used on Carnival?

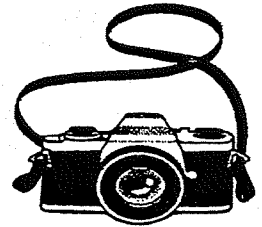
I think the iridizing chemicals would have been the same. Perhaps there might be more iridizing chemicals or more different ones used on Stretch. They are not always the same. You may use one chemical spray for this color and a different chemical spray for another color. And it may depend upon the base glass that you are working with. If you're making what we think of as a marigold color, that had to have a different spray to get the marigold color on crystal, than the spray on what you call white Carnival, or white Stretch, which is also on crystal, so it has to be a different spray, the difference is in the contents of the spray.

The question as to whether it was more expensive to make Stretch than pattern Carnival Glass – it would be today in our factory, more expensive to make Stretch because we pay more attention to defects. I think that we would have more defects showing up in a piece that had less pattern than a piece that was heavily

patterned. So that our loss, which is a very important part of the cost of any production, would be greater with Stretch than it would be with Carnival. On that basis I'd say that the Stretch would be more expensive, however, back when they made it, it looks to me like everything went, whether it was Stretch or Carnival.

RED, RED, RED!! The Stretch Glass Convention 1999 -- John Madeley

What a fabulous color page...I have stared at it multiple times as I have put it together. You are looking at some very unusual, rare RED stretch glass!! Our thanks to Bob Jones for the wonderful photograph of Bill Crowl....."Lookin good Bill" !!! Of course, Bill is holding two very rare pieces of red stretch glass.....the dolphin comport (Plate 169 - \$1,200.00 – "American Iridescent Stretch Glass) and the dolphin bowl (plate 130 - \$1,850.00 – "American Iridescent Stretch Glass). Are you RED with envy! Don't expect to find these pieces during your casual hunts...but then one never knows!



Bill Crowl displayed and presented his extensive RED Stretch Glass Collection at the 1999 SGS Convention. What a treat it was! Bill has been collecting stretch glass for over 30 years. According to Bill, "It was easy to find then, I knew what it was, but I couldn't sell it, so I kept it". Red is among one of his personal favorites, but so is tangerine and aquamarine. Per Bill, "Imperial and Fenton both offered red, but the shapes and color of each are distinctive. Thanks, Bill

Christmas is coming.....So, scour those "For Sale" ads.....

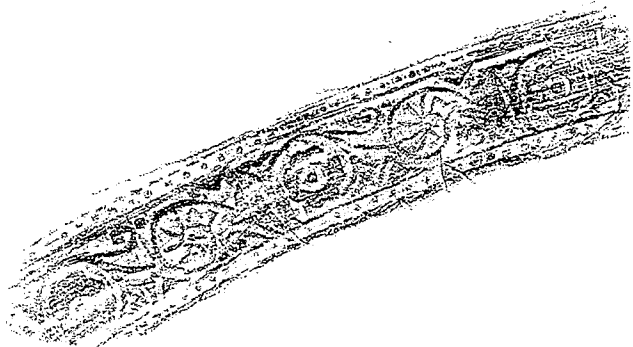
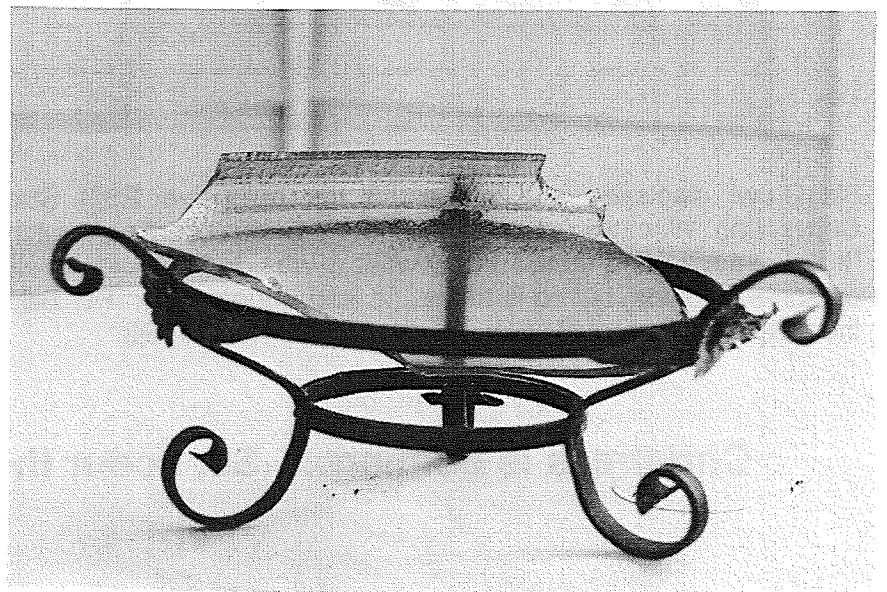
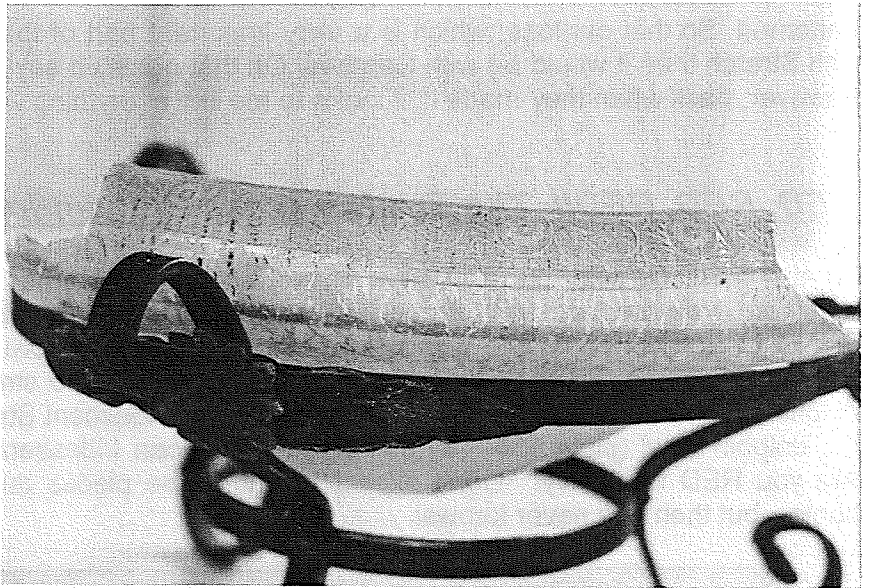
Does anyone have a Celeste Blue Bowl that goes in the wrought iron stand in these pictures? The bowl/stand and matching 10 1/2" Fenton candlesticks belong to a friend who received them from her mother who died a year ago. The bowl was broken by her husband who feels even worse about it than my friend. She would be delighted if she could buy a replacement bowl, and would probably buy a bowl and stand if just a bowl can't be located.

Description:

Stand - 3 1/2" high at top ring and 1 3/4" high at bottom ring; inside diameter of top ring 7 3/4", inside diameter of bottom ring 1 3/4".

Bowl - Because there were no large pieces to reassemble, size is an approximation. Might be 4 1/2" deep, 8 1/2" inside diameter. Cupped rim with gold stripe on inside about 1" below rim. Outside top rim had stripe about 3/4" wide comprised of alternating flower in circle and "snail-like figure" with narrow stripe right below band. Excellent iridescence inside and out. If you can be of assistance, please let me know.

Joanne Rodgers
1221 Andrews Avenue
Lakewood, OH 44107



For Sale:

**Pat Call, 34 Lovell Road, Stratham, NH 03885-2218 - 603-778-0660 or pjcall@mediaone.net
Shipping Extra – Priority Mail – Insured - Satisfaction Guaranteed**

REFERENCE: Madeley/Shetlar - "American Iridescent Stretch Glass"

Color	Description	Plate	Price
Jade Green	US Glass – footed, cupped bowl, 7" x 4", like sherbet shown but turned in.....	Plate 690	\$45.00
Jade Blue	Northwood – covered candy, pointed top	Plate 590	\$110.00
Jade Blue	Northwood – rolled rim bowl, 12" wide	Plate 514	\$75.00
Crystal (White)	US Glass – center handled tray, very good iridescence	Plate 705	\$30.00
Iris Ice (White)	Imperial – 3 perfect sherbets, Chesterfield, excellent iridescence	Plate 399	\$16.00/ each
Persian Pearl (White)	Fenton - Single #314 candlestick, weak iridescence	Plate 232	\$6.00
Marigold	Small pedestal tray, 5.25 D, super stretch and iridescence, tiniest nick underside of foot, n/h. bought specifically for its color		\$19.50
Celeste Blue	Fenton – Plate for crackers/cheese, super stretch and iridescence	Plate 210 Without decor	\$20.00
Celeste Blue	Fenton - #318 candlesticks	Plate 233	\$29.00/pr
Blue	Northwood - #636 covered candy, small size, excellent iridescence	Plate 591	\$32.00
Celeste Blue	Fenton - #314 candlesticks	Plate 232	\$15.00/pr
Blue	Northwood – Colonial candlesticks, 8.5" some gold (worn) around octagonal foot	Plate 601	\$55.00/pr
Blue Ice (Smokey)	Imperial - engraved floral pattern underplate for cheese/crackers. See Imperial Glass by Archer, pg. 95 – design similar to cut #13		\$40.00
Blue Ice (Smokey)	Imperial - center handled tray – excellent iridescence	Plate 417	\$35.00
Velva Rose (pink)	Fenton - #407 footed creamer	Plate 254	\$38.00
Velva Rose (pink)	Fenton - diamond optic small fan vase, # 567, fair iridescence	Plate 348	\$18.00
Florentine Green	Fenton – paneled vase, 13.5" tall, -there is no stretch to this, to me it's Ice Green Carnival	Plate 344	\$95.00
Florentine Green	Fenton - # 857, melon ribbed bowl, 11", good iridescence, a couple of "cut-off tails" in bowl	Plate 147	\$50.00
Florentine Green	Fenton – single Florentine candlestick, 8.5"	Plate 242	\$20.00
Florentine Green	Fenton - #743 base to footed puff box, excellent iridescence, makes a good mint dish until the lid shows up	Plate 307	\$20.00
Florentine Green	Fenton - bud vase	Plate 342	\$15.00
Topaz	Northwood – 6" optic rays plate	Plate 581	\$9.00
Red	Fenton - 7.5" ,shallow, cupped, deep ruby bowl, iridescence inside only and excellent, similar to bowl shown in plate 105, base chip.....so	Plate 105	\$35.00

I would like to share a letter I received from Pat Call, not because of the compliments, but to share her sentiments regarding the SGS Newsletter. WE DO, with the input and assistance from many, have a wonderful Newsletter. I do encourage you to contribute, in whatever way you can. IT DOES MAKE A DIFFERENCE and remember, I just edit and format, that is my duty as Secretary/Editor. (I also wear trifocals!!!!). YOU contribute and each of us deserves to get what we paid for... even For Sale Ads. Some of you have written that you truly enjoy the Newsletter and I am grateful for thatthanks!!! So "orders from headquarters"enjoy the RED Stretch Glass profile and the Newsletter. The following is from Pat:

Dear Jan,

I just had to write to compliment you on the SGS Newsletter. Of all the bulletins we receive, from various clubs, this is one of the very best...because it is uncluttered, easy to read, with just the right amount of graphics. You do a wonderful job with the format.

I've actually dropped my membership in one organization because the information was so hidden among the frills, flowers, scrolls, borders and varying sizes of print, I was exhausted trying to pick out what was information, what was advertising, what was "jokes".....etc. You get the idea....

While I don't wish to take anything away from those who contribute by writing articles and sharing information, the format makes all the difference in whether all that hard work is read!

In addition, I want to thank you for the way you formatted my ad. That made it clear, concise and easy to read.

Kudos to you Gal! You do a super- good job.

Darlene A. Johnson, Rt. 3 Box 33A, Phillipsburg, KS 67661 – 785-543-6550 or kldaj@ruraltel.net – (darlin-clem)

WILLING TO TRADE:

Fenton's #923 nut cup in Celeste Blue for a mayonnaise of the same color and mold

Fenton's #923 nut cup in Florentine Green for a mayonnaise of the same color and mold

NEED:

An iridized Aquamarine ladle.....does anyone have one??

Unusual Shapes and Colors – One Piece or a Collection
Stretch Glass Bought and Sold

William Crowl, 1500 Avery Street, Parkersburg, West Virginia 26101
304-422-5042

EXCLUSIVE SALE FOR SGS MEMBERS ONLY

A CHRISTMAS GIFT

FROM ME, TO YOU, TO ???

No Bidding - No Shopping - If you want it, you can buy it!

Contact: Rex Tatum, 1120 Suarez Drive, St. Gabriel, LA 70776 - 225-642-0977 or
Email: breve44@aol.com

Shipping and Insurance at my discretion. It ranges from \$4.50 minimum to \$8.50 maximum per piece....discounts for more than 1 item.

Plate #	Color/Colors	Description	Price
DIAMOND GLASS WARE COMPANY			
59	Green	Candy Jar, ¾ lb., 8 panels, curved top, 8 1/8" high	30.00
60	Green, Pearl	Candy Jar, 1 lb., 8 panels, curved top, 9" high	30.00
63	Blue (pair)	Candlesticks, 8"	49.00 pair
63	Blue (pair) with enamel	Candlesticks, 8"	49.00 pair
66	Harding Blue	Candlestick/Vases 9 ½" high	20.00 each
67	Blue with flowers	Candlestick/Vases 9 5/8" high	70.00 pair
82	Pearl	Vase, round, 4 3/8" wide, 4" high	30.00
FENTON ART GLASS COMPANY			
146	Yellow, Blue	Bowl, #847, Melon Rib, flared, cupped, 9 ½" wide	55.00
147	Green	Bowl, #857, Melon Rib, wide flared, 11" wide	55.00
173	Green	Comport #260, wide flared, 6 ¾" wide	45.00
184	Pink	Salver, #1043, 7 ¾" wide, 2 ½" high, (like Adam's Rib)	39.00
185	Blue	Salver, #1043, 7 ¾" wide, 2 ½" high, (like Adam's Rib)	39.00
206	Yellow	Handled Server, round, 10 ½" wide, 5 ¼" high	55.00
212	Green, Blue	Candy Jars, #8 with lid, ½ lb., 7 ¾" high	30.00
213	Blue, Pearl	Candy Jars, #9 with lid, ¾ lb., 9" high	35.00
219	Yellow, Pearl	Candy Jars, #635 with lid, ½ lb., scarce shape, 8 ¼" high	40.00
220	Green, Blue	Candy Jars #636 with lid, 1 lb., 10" high	39.00
232	Blue, Yellow, White	Low Candlesticks, #314, 1 5/8" high, 4" base	22.00 pair
233	Pink, Blue, Green	Low Candlesticks, #318, 2 ¾" high, 4 3/8" base	39.00 pair
234	Pink	Low Candlesticks, #317, 3 ¾" high, 5" base	49.00 pair

236	Pink, Blue	Low Candlesticks, #316, 3 3/8", 4 1/4" base	49.00 pair
242	Blue	Candlesticks, #449, 8 5/8" high	60.00 pair
243	Blue	Candlesticks, #349 10 1/2" high	75.00 pair
317	Pink, Green	Vase #61, flared, 6" wide, 6 1/4" high	49.00
318	Blue	Vase #1502 (NOT optic) , cupped, 5 1/5" high	35.00
322	Green, Marigold	Vase #621, cupped, 8 3/8" high	49.00
356	Green, Pink	Vase #847, fan, Melon Rib, c 8 3/8" w, 5 3/4" high	40.00
IMPERIAL GLASS COMPANY			
359	Blue/Green ("ice")	Bowl, round, optic, 12 wide panels, 8 1/4" wide, 3" high	39.00
360	White	Bowl, flared optic, 12 wide panels, 9" wide, 3 1/4" base	39.00
364	White	Bowl, flared optic, 16 wide panels, 9 3/4" wide, 2 1/4" high	49.00
399	Blue/Green ("ice")	Sherbet, #600, "Chesterfield", 4 1/4" wide, 3 1/4" high	22.50
417	Blue Smoke	Server #664, handled, 10 1/2" wide, 4 1/4" high	39.00
417	Marigold – Cut	Server, #664, handled, 10 1/2" wide, 4 1/4" high – floral cut	45.00
417	Marigold – Cut	Server, #664, handled, 10 1/2" wide, 4 1/4" high – rare triangle cut	59.00
422	White	Mayonnaise Set #4460, bowl and plate, 10 optic panels	40.00
447	Blue Smoke	Basket, #300, star burst sink (bottom) 9 3/4" high, 5 3/4" wide	60.00
LANCASTER			
478	Amber	Bowl, flared, 3-footed base, 9" wide, 3" high ("marigold")	30.00
NORTHWOOD			
518	Russet	Bowl, #669, flared, 8" wide, 3 1/4" high	40.00
520	Blue	Bowl, #662, cupped, 28 optic rays, 7 5/8" wide, 3 1/2" high	49.00
525	Blue, Yellow, White	Bowl, #648, deep, flared, 10 1/4" wide, 4 5/8" high	40.00
526	Blue, Russet	Bowl, #692, flared, straight sides ("V" bowl) 9 1/2" wide, 3 1/2" high	40.00
530	Blue	Bowl, #663, flared, 28 optic rays, 9 5/8" wide, 3 1/4" high	40.00
535	Blue	Bowl, #697, (c, 7" w version) CHOOSE – flared, cupped, rolled?	29.00
536	Russet	Bowl, #649, rolled rim, 11 1/2" wide, 3 1/4" high	45.00
540	White	Bowl, #677 (?) heavy, footed, flared, 10 3/4" wide, 4 3/8" high	35.00
551	Russet	Comport #654, straight/flared, footed, gold trim 8 5/8" wide	25.00
552	Russet	Footed Comport, #656 c. 7 1/2" wide – CHOOSE – flared, cupped, rolled?	29.00

572	Blue, Green	Comport, #637, flared, cupped, 21 ribs, 5 ½" wide, 7" high	55.00
574	Blue, Topaz	Comport, #637, nearly flat, scarce shape, 21 ribs, 8 3/8" wide	90.00
599	Blue	Candlesticks #658, 6 sided, 6 7/8" high, 4" base	55.00 pair
600	Blue, Topaz	Candlesticks #657, 6 sided, 8 ½" high, 4 3/8" base	70.00 pair
601	Yellow	Candlesticks, #695, "Colonial", 6 sided, 8 ¾" high, 3 7/8" base	70.00 pair
616	Blue	Mayonnaise Set (bowl and plate), #621 flared, ground marie	39.00
UNITED STATES GLASS COMPANY			
642	Light Blue/Green	Bowl, heavy, shallow, flared rim, ground foot, 11 5/8" wide	45.00
647	White, Blue, Yellow	Bowl, #314, flared, 4 fluted panels, ground foot, 10 ½" wide	39.00
648	Blue	Bowl, #314, deep, flared, ground foot, smooth rim 8 ¼" wide	39.00
668	White, Blue, Yellow	Bowl, #314, low foot, flared rim, 4 fluted panels, 10" wide	45.00
677	White, Blue, Yellow	Comport, large version, flared, ball stem, 8 ¼" wide, 7" high	60.00
683	White	Comport, high footed, flared, cupped, 7 ½" wide, 4 5/8" high	35.00
701	Blue, White, Yellow	Plate #8076, open work rim, 12 ½" wide ("brides bowl")	70.00
706	Green	Server, #310, handled, scalloped, 6 panels, 10" wide, 4" high	55.00
732	Blue, Yellow	Vase #179, (see plate 323), "hat shape" small, 9" wide, 3 ½" high	55.00
740	Blue***, White, Yellow	Vase #179 footed, flared, cupped *** blue with black trim	29.00

In addition to the above catalogued list:

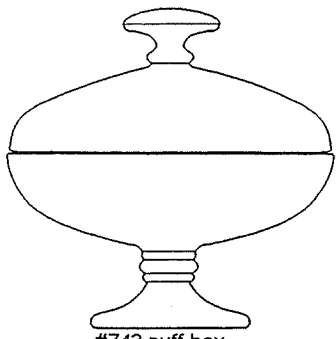
I have 32 pieces of NORTHWOOD Jade Blue items including BOWLS (rolled paneled, cupped, 5 ½" to 11"), CANDLESTICKS (both sizes), COMPORTS (footed, ribbed), CANDY JARS (with lid, 1 extra lid)

Covered Bonbons in Blue, Green, Yellow, White

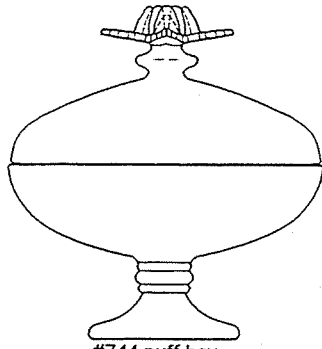
Sherbets sets of 6 and 8 -- Blue, Green, White, Yellow

11 Bobeche's -- yellow only and

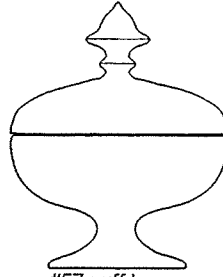
over 200 PLATES in all sizes, shapes, colors, -- sets of 2,4,6,8, as well as singles, upon request.



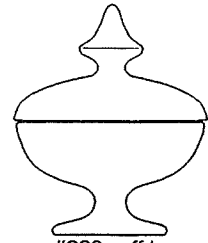
#743 puff box



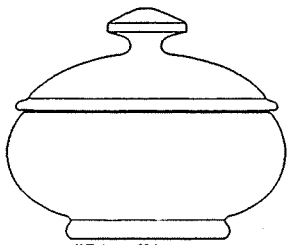
#744 puff box



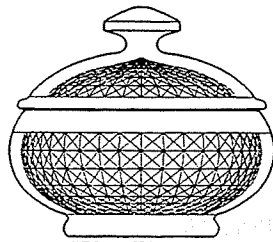
#57 puff box



#??? puff box



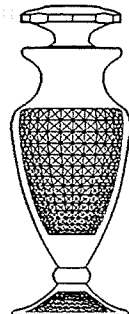
#54 puff jar



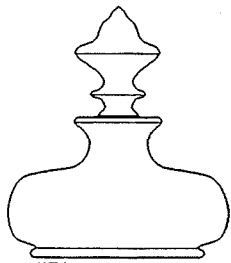
#53 puff jar



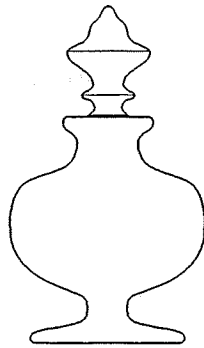
#54 cologne



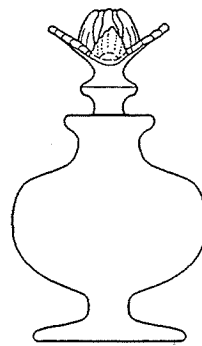
#53 cologne



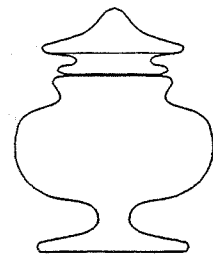
#59 cologne



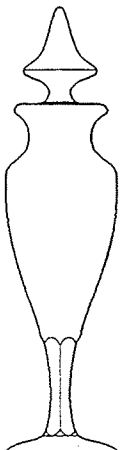
#56 cologne



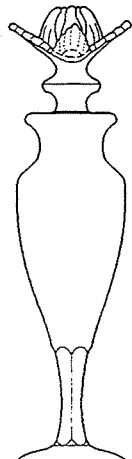
#56 cologne w/flower top



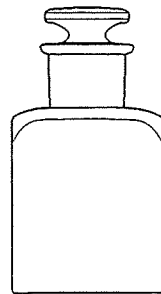
#60 bath salts jar



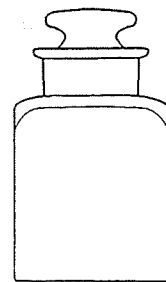
#55 cologne



#55 1/2 cologne



#16 bathroom jar



#17 bathroom jar

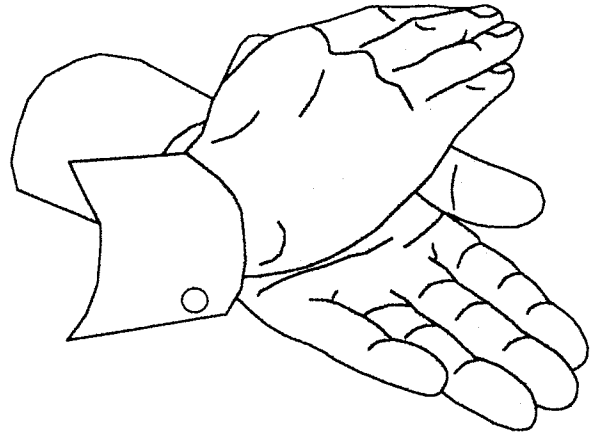
"American Iridescent Stretch Glass"

by John Madeley and Dave Shetlar is a REALITY!!!

You may purchase your signed copy by one of the authors for \$22.00, which includes shipping and handling.

Make your check or money order payable to John Madeley

**Send to:
The Authors
P.O. Box 901
Hampshire, IL 60140**



ENJOY!!! -- Thanks John and Dave

THE STRETCH GLASS SOCIETY is a national organization designed to stimulate interest in American stretch glass produced from 1916 through 1935. The members share information on the manufacturers and designs of stretch glass. Members are entitled to the newsletter produced quarterly, SGS Member Directory, and may attend the annual Convention and Show held in April.

Through its membership, the Stretch Glass Society can answer most questions concerning the origin, names and colors of stretch glass. May we acquaint you with the makers - Fenton, Northwood, Imperial, Diamond, U.S. Glass, Vineland, Lancaster, Jeannette and Central? At the annual show, you can see colors such as: blue, green, topaz, pink, russet, wisteria, red, tangerine, opaque blue, opaque black, opaque yellow, opaque white and many more!

Annual dues are \$22.00 per year. Please send this membership form and check made out to the STRETCH GLASS SOCIETY and mail to:

**STRETCH GLASS SOCIETY
P.O. BOX 573
HAMPSHIRE, IL 60140**

rev. 07/99

THE STRETCH GLASS SOCIETY is a national organization designed to stimulate interest in American stretch glass produced from 1916 through 1935. The members share information on the manufacturers and designs of stretch glass. Members are entitled to the newsletter produced quarterly, SGS Member Directory, and may attend the annual Convention and Show held in April.

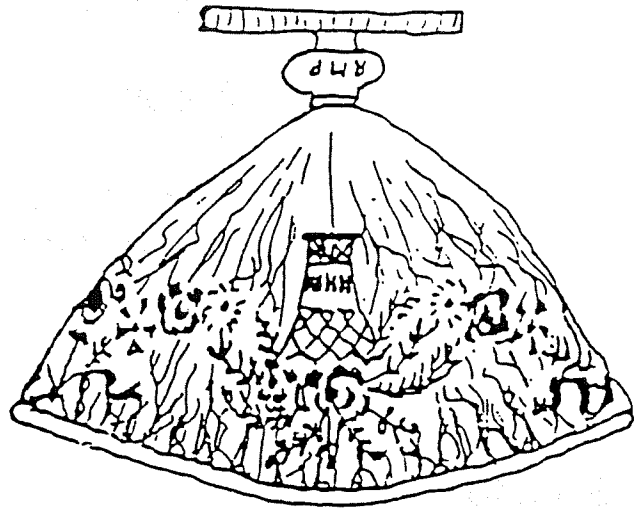
Through its membership, the Stretch Glass Society can answer most questions concerning the origin, names and colors of stretch glass. May we acquaint you with the makers - Fenton, Northwood, Imperial, Diamond, U.S. Glass, Vineland, Lancaster, Jeannette and Central? At the annual show, you can see colors such as: blue, green, topaz, pink, russet, wisteria, red, tangerine, opaque blue, opaque black, opaque yellow, opaque white and many more!

Annual dues are \$22.00 per year. Please send this membership form and check made out to the STRETCH GLASS SOCIETY and mail to:

**STRETCH GLASS SOCIETY
P.O. BOX 573
HAMPSHIRE, IL 60140**

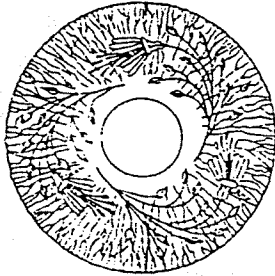
rev. 07/99

.....
.....
FIRST CLASS MAIL



Janet R. Reichling - Sec/Editor
Stretch Glass Society
1085 Taunton Court
Schamburg, IL 60193

MEMBERSHIP FORM
FOR THE



STRETCH GLASS SOCIETY
(Founded April 21, 1974 - Denver, PA)

Mr./Mrs./Ms. _____
(please print full name)

(complete mailing address)

City State Zip

*Phone _____

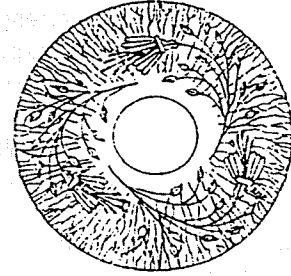
Signature _____

(please return to address on reverse)

*Phone numbers will be published in the SGS Member Directory
(available to members only), unless notified to do otherwise.

I learned about the SGS through (circle one):
ANTIQUE TRADER DAZE GLASS DIGEST
DEALER OTHER

MEMBERSHIP FORM
FOR THE



STRETCH GLASS SOCIETY
(Founded April 21, 1974 - Denver, PA)

Mr./Mrs./Ms. _____
(please print full name)

(complete mailing address)

City State Zip

*Phone _____

Signature _____

(please return to address on reverse)

*Phone numbers will be published in the SGS Member Directory
(available to members only), unless notified to do otherwise.

I learned about the SGS through (circle one):
ANTIQUE TRADER DAZE GLASS DIGEST
DEALER OTHER