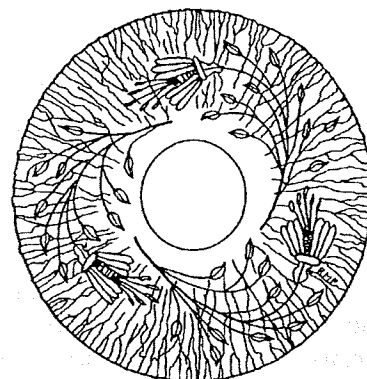


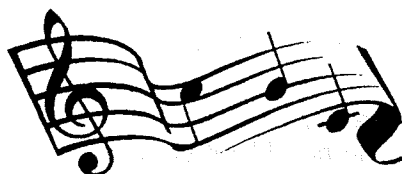
FOUNDED APRIL 21, 1974 IN DENVER, PENNA

STRETCH GLASS SOCIETY NEWSLETTER

April, 2000



(Co-) Presidents' Message



Dear Members: We feel like Jimmy Durante 'cause we want to sing "**Thanks For the Memories**," but we're afraid Mrs. Calabash AND Mr. Durante would role over in their resting places if we tried. And besides, we really aren't going to be going anywhere! If all goes well, we will be your next Secretary/Editors.

Yes, it's going to take the both of us to handle the duties after the wonderful job that Jan has done (be sure to check out her contributions in this, her final, Newsletter as Editor!). But, never fear, Jan's talents won't be lost to us. She has agreed to serve on the Board of Directors. Arna Simpson wanted to retire from her Board position, but we have been so pleased with her contributions that we just couldn't let her go and thankfully, she has agreed to stay on for another term! One other Board member, however, will be stepping down. Stephanie Leonard, whose mother suffers from Alzheimer's, is going to spend more time contributing to the care and attention that her mother needs. We want to thank Stephanie for her years of work on the Board and wish her well with her family responsibilities.

And finally, our Vice-President and Treasurer are bidding farewell this year, too. John Madeley, who has also served on the Board and Calvin Hackeman have asked not to have their names placed in nomination. Both have done exemplary jobs and we hate to see them go, but wish them well. We hope that all of the officers and board members leaving their positions with the Society will continue their support and involvement with Stretch glass and with the SGS. Hopefully, after a little rest, they will consider serving the Society again in some capacity. We thank each one of them!

Now, on with the slate of nominees for the Y2K elections. Oh, sorry, we don't have room here, but look elsewhere in this issue for the nominees that we have so far for: **President, Vice-President, Secretary/Editor, Treasurer, Director of Historical Information, Director of News and Technical Information and Director of Ways and Means.**

In one respect, we believe we should apologize for the "nearly all ads" January issue of the NL, but we were sure everyone would want to have as much information as was available about the 2000 souvenir and convention that we may have gone just a little over-board. On the other hand, if you didn't rush to find your checkbook after seeing the color page, you must be colorblind! Personally, we are trying to figure out how we are going to manage to buy our limit of **Souvenir Comports**, bid on one or more pieces in the **Whimsey Auction** AND how many **Raffle** tickets we can afford!

If you didn't send in your Souvenir Order Form by the March 31st deadline, you have missed the chance to get this wonderful comport at our discounted rate. However, if there are any comports remaining after all of the orders are filled, they will become available to the membership on a first-come-first-serve basis at a higher price (not yet determined).

As for the **Raffle Ticket Order Form** or the **Whimsey Auction Absentee Bid Form**, you practically have until the convention to mail them in. The raffle tickets will be sold throughout the convention with a last chance push just before the drawings on the Valley Gem Sternwheeler. For those of you who didn't want to pull your newsletters apart for the order forms, you should all have received your Special Convention Mailer by now. The mailer was designed specifically for you to have all the information you need to participate in the convention activities of your choice.

© Copyright, 2000 -- The Stretch Glass Society. All rights reserved. No material may be reproduced, in whole or in part, in any form whatsoever without written permission of the Board of Directors.

As you may have noticed, there was also a newly designed **Membership Form** in your packet. We did this so that everyone, new and long-time members alike, could have a look at it and hopefully, complete the optional questionnaire and use the form when sending in their dues (seeing as how they are due on April 1st).

We would also like to encourage each of you to duplicate (black/white is fine) the Membership Form we have included with this newsletter. If you keep a few copies in your vehicle you can be prepared to offer information about the SGS—at the drop of a hat—to any dealer or buyer of stretch that you may come across during your outings. Each and every one of you are ambassadors for the Stretch Glass Society and we look to you all in helping to educate collectors and dealers about this glass that we have grown to love. Who knows, perhaps there will come a day when no one will be found to say, “Oh yes, I know what stretch glass is, it’s that glass that’s stretched way out, right?” Oh come on, we can dream can’t we!

Well, our stretch glass finds since Christmas has been few and far between. We had an interesting find though in late February. Dave spotted a small oval plate that looked like it was clear glass with a delicately stretched iridescent surface. He thought, could it be Jeannette? Renee, however, thought, no, it looks more like Imperial’s iridescence. In fact, when we got it in good light at home, it was actually pink glass delicately iridized.

What do you think it was? Send us a note and give us your answer. The first one to correctly identify this little plate will be appropriately recognized. The dimensions are: 6.25”x4.50”base and 9”x7.25”width across the top.

In the last newsletter, we made some comments about encouraging visitors to see your glass. Since that time, we had a visit by Gary Senkar in February. If you haven’t met Gary, he “specializes” in Imperial Art Glass (=Jewels) and likes to “dabble” in Free Hand and other fine Imperial glass. Unfortunately, we have found that Gary has much the same tastes that we all have on eBay! Gary showed up on our doorstep carting a plastic box full of goodies. He had attended the J&J Auction of carnival glass, but had also brought some of his recent purchases of Art Glass. We oohed and aahed at the little basket (#68) that was a very light wisteria, not the normal, darker pearl amethyst – a real unusual color! Speaking of pearl amethyst, he also pulled out a small #18 vase that has to be the best that Imperial could do! It reflected every deep color of the rainbow! Well, we wiped off the drool marks and handed the pieces back. Gary then made a quick tour of our glass to see our newer purchases (sorry Gary, you’re not in the running on the little pink oval tray). We hope that Cheryl can make it in the next visit.

Dave also made it out to California on a speaking trip February 28 & 29. After a couple of e-mails, he realized that he was going to be within an hour’s drive from the Walns. Fortunately, Nancy and Phil extended an offer for a bed for the night, so a visit was arranged. After battling the infamous LA traffic jams, Dave arrived about 8pm (Ohio time, Dave was at 11pm!). A quick tour of the house had to be interrupted for a trip to the local Mexican restaurant! THEN the real tour began! Nancy and Phil have taken instruction from Kitty and Russell Umbraco (they’re in the San Francisco area) on how to deftly wind a wire around the bases of plates and shallow bowls so that they can be easily hung on the walls. Makes quite a display. Dave’s eyes were immediately drawn to a swirl optic Northwood bowl in a wide-flared, cupped shape (the normal is a slightly rolled rim) and a large Diamond blue crackle bowl.

Stretch Glass Society Officers

CO-PRESIDENTS: Dave & Renée Shettlar
35 Vandeman Avenue
Delaware, OH 43015-1723

SECRETARY/EDITOR: Janet R. Reichling
1085 Taunton Court
Schaumburg, IL 60193

VICE-PRESIDENT: John Madeley
595 North 12th Street
St. Charles, IL 60174

TREASURER: Calvin Hackeman
8865 Olde Mill Run Road
Manassas, VA 20110

Board of Directors

HISTORICAL INFORMATION: Stephanie Leonard, MA/2000
NEWS/TECHNICAL INFORMATION: Arna Simpson, MD/2000

ADVERTISING/PROMOTION: Helen Jones, VA/2001
WAYS/MEANS: Jim Steinbach, OH/2000

CONVENTION/SHOW: Joanne Rodgers, OH/2001

DUES: Twenty-two dollars (\$22) annually for each family -- payable on April 1st

Virtually every room has stretch glass on surfaces and in cabinets. In Dave's assigned bedroom, the Walns' opaque collection was located. He immediately set to trying to coax some of their U.S. Glass opaque yellow pieces out of the cabinets. He then discovered a round, opaque yellow plate. We just knew that there HAD to be plates in the opaque yellow or green, but we had theorized that they would have the rays (like plate 697 in the stretch glass book) which are present on all the bowls seen so far. Well that theory is shot! The plate was heavy, completely round and had a ground bottom.

A trip to their other "spare" bedroom revealed wall to wall class cabinets filled with all kinds of goodies. This is where they keep their Imperial and we again began to pull out all kinds of nice pieces. We found a piece that was made from the same mold as the Gary Senkar piece described above. HOWEVER, this piece was OPALESCENT crystal glass with heavy marigold iridescence. From a distance, I thought it was a Diamond piece! The vase shape had been pinched in and pulled up straight, a unique shape for Imperial. After leaving as many fingerprints as he could, Dave found two more unique pieces in the master bedroom. Here, two Northwood comports were discovered. They were both made from the Northwood #666 mold (see plate 575 in the stretch glass book) – one had a cupped in top and the other flared straight out, resembling a giant martini goblet! The martini shape reminded Dave that he was still on Eastern Standard time and it was time to dream of stretch glass.

The next morning, he discovered that the "Stretch Glass Fairy" had left some pieces in his bathroom, but when he tried to pick them up to put into his suitcase, he found out that they were all stuck down with some kind of "gum"!! If you have never visited a California glass collector, apparently this sticky putty is used to stick down valuable pieces so that they don't walk off in an earthquake.

The next morning, Dave toured the glass one last time and coaxed Nancy and Phil to make a pile of glass to be photographed. Hopefully, some of the pieces that have been described above will be included in a future newsletter. It's always great to learn of new pieces! After seeing all the great glass, we hope to save our nickels and dimes in order to make a longer trip to the West Coast – watch out Russell and Kitty!

Renée and Dave Shetlar

NOMINATIONS FOR THE SGS, 2000



PRESIDENT – _____

(Please write in your name if you are willing to serve in this position)

Return this sheet to Joanne Rodgers, 1221 Andrews Avenue, Lakewood, OH 44107

VICE-PRESIDENT

Serrill (Bebe) Geisler

SECRETARY/EDITOR

Renée Shetlar/ David Shetlar

CO-TREASURERS

Phil and Nancy Waln

DIRECTOR/HISTORICAL INFORMATION

Arna Simpson

DIRECTOR/NEWS & TECHNICAL INFORMATION

Janet Reichling

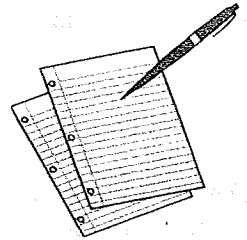
DIRECTOR/WAYS & MEANS

Jim Steinbach

For more information on the duties of any of the above positions, please see the SGS Constitution and By-Laws.
(y2kNominations)

JAN REICHLING AND HER GLASS!!

This is my last issue of the Stretch Glass Society Newsletter as the Secretary/Editor. Dave and Renee Shetlar will assume the responsibilities for the publication of the SGS Newsletter beginning with the July 1, 2000 Stretch Glass Society Newsletter. I can't believe it has been almost 5 years since I began publishing the Newsletter. Every issue has been like a new movie....I got to see the Sneak Previews first! Yes, it is time consuming; waiting for information, and deadlines, but I always wanted to publish a quality, newsworthy Newsletter. As most of you have indicated over the months, the line drawings and color pages has been a winner! And hopefully with the Sale Ads, some of your collections have flourished. But now I will be on the other endreceiving the SGS Newsletter, and may I add, with much anticipation. I have accepted the position of the News/Technical Director and most likely will be "contacting YOU" for information for a column I want to publish in each upcoming Stretch Glass Newsletter. MY SINCERE THANKS TO ALL OF YOU WHO HAVE CONTRIBUTED THESE PAST YEARS.



Now, a little, about me and my glass and the activities surrounding glass. I know most of you in one way or another, personally or by mailing your Newsletter, but I decided to do a profile on "Jan Reichling" and her glass for my final issue. I have been collecting antique glass, furniture and linens for years. The beauty of wood, from primitive too ornate has always been a passion! I even collect unusual wood bowls (black locust, spalted apple, spalted tulip, burl oak and maple, box elder, wild cherry, rain tree, osage orange and maple or whatever) and some Papago (Tohono O' Odham) Native American baskets.... Almost all the furniture in my home is older and reflects various time periods...the good old mix and match mode.

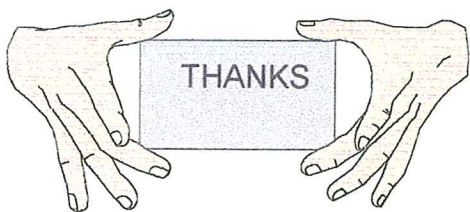
I have also accepted the position of Recording Secretary for The 20-30-40 Society (effective January 1, 2000), a local glass club in Illinois. Some of you may even attend the renown 20-30-40 Annual Show and Sale sponsored by the 20-30-40 Society in March each year. Between Board Meetings and Club Meetings, alternating each month, it is a great time with friends and glass.

As with the most of you, Stretch Glass is not your only collection. Although, I believe Stretch Glass had a strong emphasis for me for quite a while, I have and continue to "hunt" other glass. Of the EAPG period (Early American Pattern Glass), I collect Button Band and Ruby Stained Nail, both made by the Ripley & Co between (circa 1886 to 1892). Of the Elegant Glass period, both Fostoria's Brocaded Acorn (Oakleaf and Oakwood - all colors) and Cambridge's Etch 704 (all colors) collections began years ago. The Etch 704 was a collection even before Stretch Glass. For fun and use, I collect a Depression Glass Pattern called S-Pattern by MacBeth Evans. Various small elegant collections have been started and continue to grow. I especially have taken a fondness to Robert Held's Art Glass....it is stretched, iridized and beautiful. Some collections are being sold and new ones are being acquired as I write.

My current passion is Westmoreland's Cut and Cased Glass, produced around 1915 to 1930. It has been a unique experience to say the least. Some, not all, glass blanks were manufactured by other companies and provided to Westmoreland to decorate. Decorating houses were abundant in those days (shops and home), so the identification process is challenging. I contribute articles occasionally for the Westmoreland Newsletter. And, I have had the pleasure of visiting Charles West Wilson, author of *Westmoreland Glass*, twice this past fall in Mechanicsburg, PA. He was a gracious and informative host! Beautiful, beautiful glass! I hope to do a major presentation on Westmoreland Cut and Cased next spring in PA. I may need a van by then!!

In August at the 20-30-40 Meeting, I will start a presentation with my Fenton Stretch Perfumes and everyone is being asked to bring a perfume, powder, etc. to add to this presentation. Fun ahead!

The color page reflects a few of my favorite pieces/lines of Stretch Glass. Of course, there is no way to include it all, but there is a way for you to see it....feel free to visit any time.



"JAN REICHLING AND HER GLASS"

As I took these pictures, I knew I wanted to "cut and paste" for an arrangement to happen! Some pictures are better than others are, but I am learning, have a way to go, but without a doubt, I wanted to share with you a few pieces of glass that I find interesting, uncommon, and beautiful. With all that said, it is time for a new camera, dropping it did not help!!

At the top of the page are two **Jeannette** Amber Marigold Bowls. The intensity of the stretch is rich, thick, and stunning. They may just be bowls, but what bowls! I still see them at malls, markets and even eBay, but not as brilliant. So, keep your eyes open! *I look at them and see sunsets!!*

The **Fenton** #604 Ruby (Red) Punch Bowl and Base have an overwhelming presence! It is difficult to tell by the picture, but both are stretched; note the rich red rim on the bowl. The Punch Bowl Base was a recent purchase and yes, they are scarce to find.

The **US Glass** (Mandarin Yellow) Opaque Yellow Vase is so different than most stretch pieces. It is 12 inches tall and the decoration (on both sides of the vase) with black trim depicts a man and woman in a charming garden setting. Always look at opaque pieces...all colors; you never know when one will be stretched.

This picture displays three Cobalt Blue pieces. Cobalt Blue was not abundantly produced and is highly collectible. Pictured is a **Diamond** BonBon, a #891 **Fenton** (Royal Blue) Vase and **Central** Candlesticks (yes, I have a pair!).

Here we have **Fenton's** Tangerine color; highly sought after today. Pictured is the # 200 Guest Set and the #2 Cream and Sugar Set. I am particularly fond of both these styles. Other colors in this line/style offer the Cobalt Blue handles on both pieces. *They truly are elegant!*

The **Northwood** Topaz Pitcher and Tumbler (there is a set of four with coasters) are not easily found and are sought by Carnival and Vaseline Collectors. You can still find the Blue Pitcher and Tumblers. Blue/Harding Blue **Diamond** Adam's Rib is one of my all time favorites! Here is the Vase and the Pitcher with the Handled Tumbler.

Next, is **Imperial's** Marigold Milk. Pictured is the Round Cupped Bowl and the #553 Electric Lamp Shade. I have never considered hanging this lampshade! I think you can tell I like Orange!!

Last but not least, is **Northwood**. Both pieces have the 12-sided foot with Tree Bark and are referred to as the Flattened Cake Stand. One is Marigold and the other is Pearl. These pieces can be found in Blue and Topaz, but Pearl and Marigold are more difficult to find.

OK, I ran out of room on this page for more pictures.....maybe Dave and Renee will let me do this again, but I think Dave and Renee have some great ideas for future Newsletters. Please keep in touch, I can be reached at JRStretch@aol.com.

WELCOME TO OUR NEW MEMBERS....Please add them to your Membership List:

Gregory and Helen Ferguson, 3146 Acushnet Avenue, New Bedford, MA 02745

CHANGE OF ADDRESS:

Jennifer Helm, PO Box 25741, Alexandria, VA 22313, - 703-628-2821

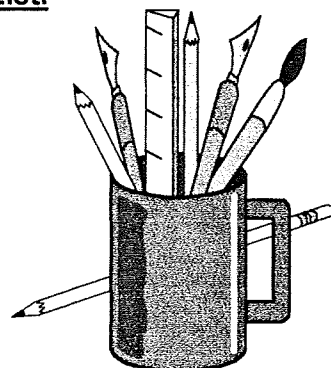
Email: jenne@compulsivecravings.com

Mary J. Henry, 2021 Campground Road, Penn Run, PA 15765 – 724-479-9763

Jacqueline Rice, PO Box 472221, Tulsa, OK 74147-2221

Middleton's Email address: d1mj1m@jps.net

Nancy Lou Costello -- new phone number -- 321-728-7730



-
- ♦ My thanks to those who responded to the request for a Northwood Topaz Guest Set Glass. We have two happy people.
 - ♦ Again, if anyone finds one: I am looking for a Lancaster Stretch Crystal with Blue Flowers Handled Server. (See Plate 494 – American Iridescent Stretch Glass) JRStretch@aol.com or call 847-895-0182.
-

Advertising/Promotion

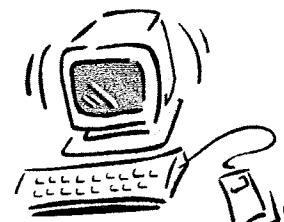
Bob and Helen Jones

For those of you that have access to the Internet:

VISIT The Stretch Glass WebSite at:

<http://members.aol.com/stretchgl>

Bob and Helen Jones have taken this project under their wings and have produced and are maintaining this effort. **Enjoy and explore** the Home Page, Calendar of Events, What is Stretch Glass?, The Identification of Stretch Glass by Shape, The Colors of Stretch Glass, Join the Society, and A Pictorial Story, the Making of a Piece of Stretch Glass! *Bob and Helen, it is greatly appreciated.* Any comments, suggestion, questions.....Email: Stretchgl@aol.com



We would like to thank the Fenton Art Glass Collectors of America for offering a free ad promoting our upcoming convention in their Newsletter, *The Butterfly Net*. Fenton made so much of the beautiful stretch glass we collect; perhaps you would like to join the Fenton Collectors. Membership is \$20.00 per year and \$5.00 per year for each associate membership (for persons residing in the same household. Children under age 12 are free. Their annual convention (which may have stretch glass for sale) will be held in August 2000. For details, phone 304-375-6196

Payment may be sent to: **FAGCA, 702 West Fifth Street, PO Box 384, Williamstown, WV 267187.**

NOTICE

**Your Membership Dues of \$22 Must Be Paid to be Eligible to
Participate in the 2000 SGS
RAFFLE DRAWING and WHIMSEY AUCTION**

Dues may be mailed directly to *either*:

Calvin Hackeman, Treasurer
8865 Olde Mill Run Road
Manassas, VA 20110-6132

OR

The Stretch Glass Society
P.O. Box 573
Hampshire, IL 60140

Darlene Johnson of Colorado mentioned that she was flipping through the March 7, 2000 issue of Family Circle Magazine and couldn't believe her eyes! On page 109 is a green stretch glass fan vase. Did anyone see it? If someone can make a copy or send the original, I will make sure it is included with our Historical Records. If by chance any other Stretch Pieces are included in Ads, etc. and you see them, please forward them to the Secretary/Editor.....they make a nice display for Convention.

Unusual Shapes and Colors – One Piece or a Collection

Stretch Glass Bought and Sold

William Crowl, 1500 Avery Street, Parkersburg, West Virginia 26101
304-422-5042



Sold on eBay in March

Congratulations to the High Bidder
and Seller

UNUSUAL AND SCARCE

VASELINE (Topaz) STRETCH GLASS
MUSTARD-JELLY COVERED JAR

NOT PICTURED IN BOOK, NOT
MARKED, MEASURES 4 3/8" HIGH
AND 3 1/2" DIAMETER.

HAS OPENING FOR SPOON,
COLLAR BASE AND NO DAMAGE.
LID IS 3 PIECE MOLD, BASE IS 2
PIECE MOLD

95
AND BIDDING

FAN
VASE
Early 20th century.
The lustrous original
vase was made by Fenton
Art Glass of West Virginia,
as is the reproduction.
Height 8 1/2".
(G2225R) \$52.00
Special Offer (G2235R)
Set of 2 \$79.95

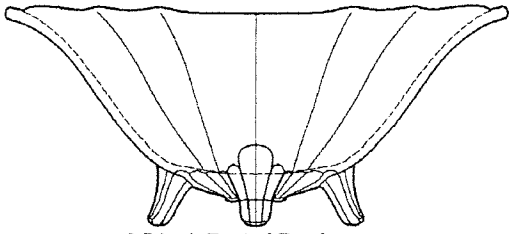
Rex Tatum writes:

This picture appeared in the Metropolitan
Museum Gift Store catalogue on page 33
with the following caption:

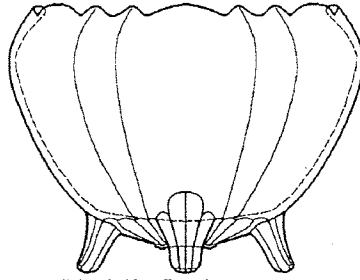
Early 20th Century. The lustrous
ORIGINAL

Vase was made by Fenton Art Glass of
West Virginia, as is the reproduction.

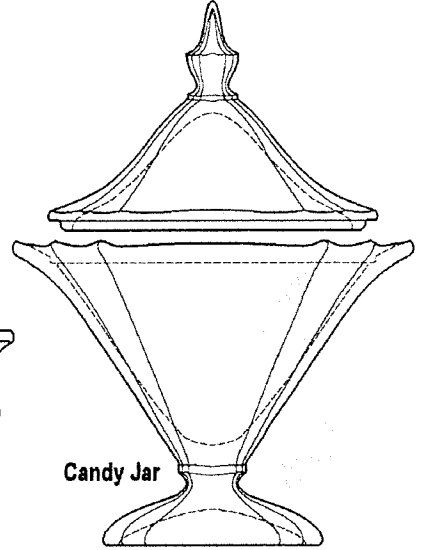
We know Fenton made reproductions, but
what is interesting is that an ORIGINAL
is being sold. Rex saw it with his own eyes,
for sale, when he recently visited the
Museum.



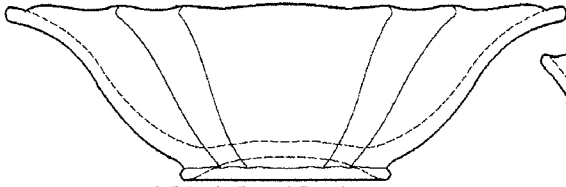
8.5-Inch Footed Bowl



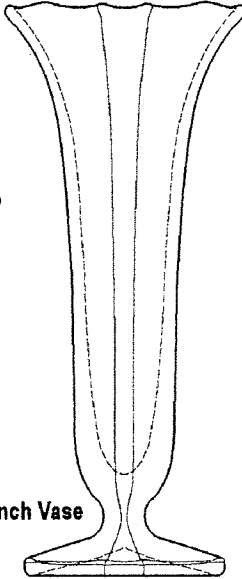
6.5-Inch Nut Bowl



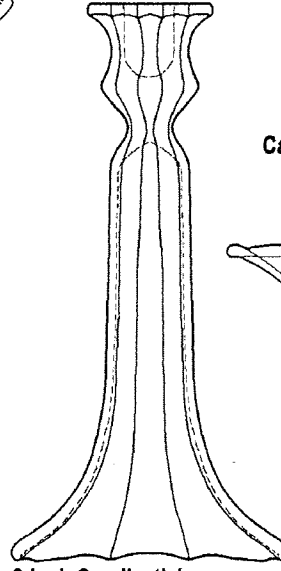
Candy Jar



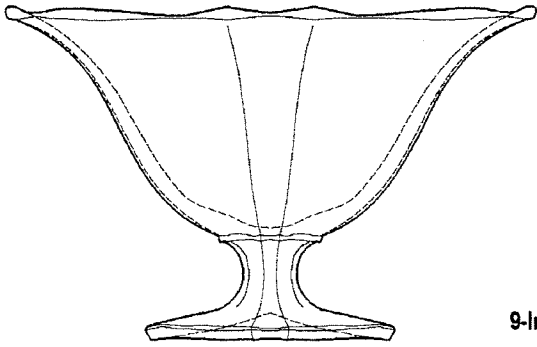
9.5-Inch Flared Bowl



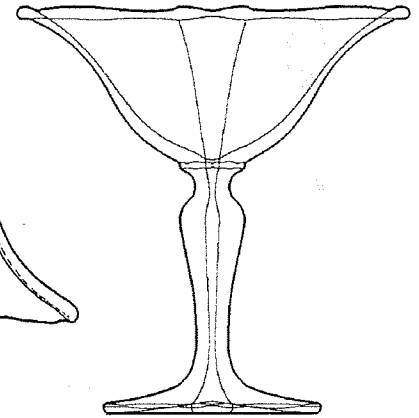
9-Inch Vase



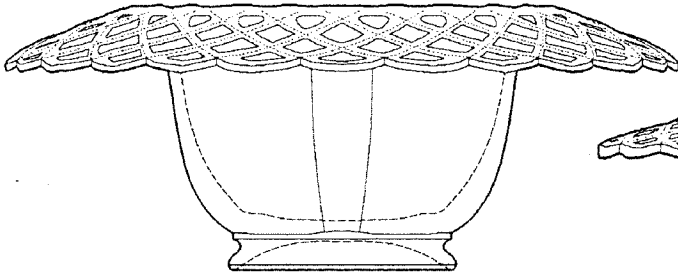
9-Inch Candlestick



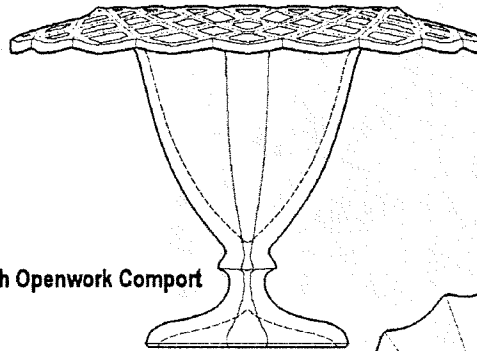
9-Inch Low Foot Comport



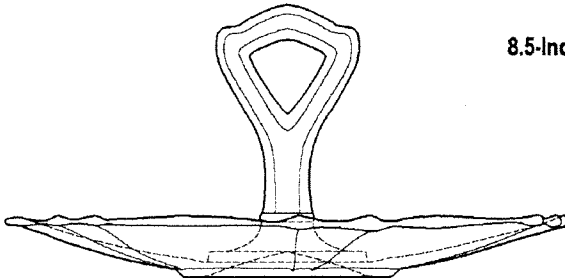
6.5-Inch High Foot Comport



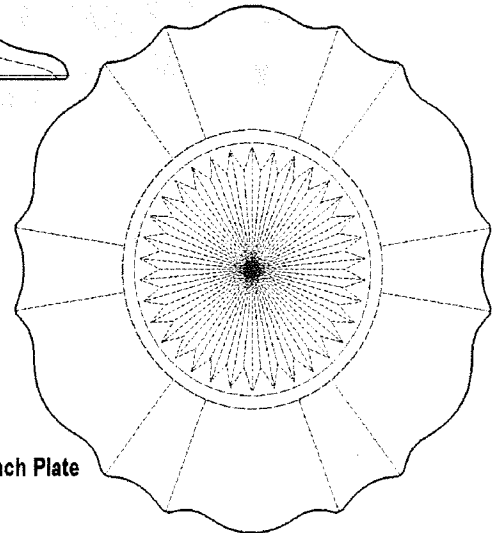
11-Inch Openwork Bowl



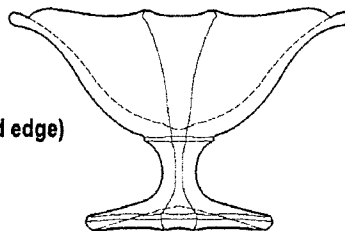
8.5-Inch Openwork Comport



10-Inch Handled Cake Plate



8-Inch Plate



6-Inch Low Foot Comport

U.S. Glass #310 Line

(has four sets of external rays and scalloped edge)

Duties of the SGS President

ARTICLE IX -- DUTIES:

1. Carry out the intentions as set forth in the Preamble of this Constitution,
2. To preside at all meetings of the Society,
3. To appoint necessary committees as permitted by this Constitution and by-laws here or hereinafter adopted, subject to approval of the Executive Board.
4. The President's duties shall be limited or expanded by directive of the Executive Board.
5. Vacancies of offices of Vice President, Secretary-Editor, or Treasurer may be filled by appointment by the President subject to the approval of the Executive Board.
6. In the event of a vacancy in the office of a Director, the President shall appoint to fill that vacancy, subject to the approval of the Executive Board, to serve until an election is held at the next Annual Meeting of the Society.
7. **The President shall be ex-officio member of the Executive Board and in the event of a tie in voting, shall then be entitled to vote.**

Section A -

1. The President shall call, at least, one meeting of the Executive Board immediately prior to the Annual Convention, but sufficiently in advance so that all pertinent business may be discussed and finalized.
2. Special meetings of the Executive Board may be called by the President and must be called by the Secretary-Editor upon written request of the majority of the Executive Board.

Section B -

1. All Presidents shall be active and participating members of the Executive Board for one (1) year after the expiration of their terms of office.

NON-SPECIFIED DUTIES

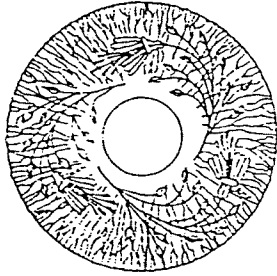
1. Call for Executive Board to review Constitution and bylaws by special communication (either verbal or written) three months prior to Convention. Proposed amendments to be sent, in writing, to President for inclusion in agenda.
2. Prepare Executive Board Meeting Agenda and distribute, if possible, two weeks prior to meeting (per Parliamentary Procedures).

Board Agenda -

- | <u>TOPIC</u> | <u>DISCUSSION TIME (#MIN.)</u> |
|--|--------------------------------|
| Constitution/Bylaws Amendment Review | |
| Old Business - Minutes, Reports from Secretary, Treasurer, & Directors | |
| New Business - Nominations | |
| Convention City Vote | |
3. First day of Convention, appoint two-person committee as Auditing Committee for Treasurers' records.
 4. Prepare Agenda for General Business Meeting (write out amendments for Board Members to make Motions) (per Parliamentary Procedures).

Welcome	
Benediction/Prayer	
Approval of Previous Year's Minutes	
Treasurer's Report	
Old Business	
New Business	
Adjourn	
 5. Write "President's Message" for quarterly SGS Newsletter and submit to Editor by 15th of the month prior to distribution (i.e. January, April, July and October).

MEMBERSHIP FORM
FOR THE



STRETCH GLASS SOCIETY
(Founded April 21, 1974 - Denver, PA)

Mr./Mrs./Ms. _____
(please print full name)

(complete mailing address)

City State Zip

*Phone _____

Signature _____
(please return to address on reverse)

*Phone numbers will be published in the SGS Member Directory
(available to members only), unless notified to do otherwise.

I learned about the SGS through (circle one):
ANTIQUER TRADER DAZE GLASS DIGEST
DEALER OTHER

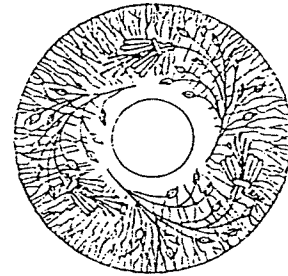
THE STRETCH GLASS SOCIETY is a national organization designed to stimulate interest in American stretch glass produced from 1916 through 1935. The members share information on the manufacturers and designs of stretch glass. Members are entitled to the newsletter produced quarterly, SGS Member Directory, and may attend the annual Convention and Show held in April.

Through its membership, the Stretch Glass Society can answer most questions concerning the origin, names and colors of stretch glass. May we acquaint you with the makers - Fenton, Northwood, Imperial, Diamond, U.S. Glass, Vineland, Lancaster, Jeannette and Central? At the annual show, you can see colors such as: blue, green, topaz, pink, russet, wisteria, red, tangerine, opaque blue, opaque black, opaque yellow, opaque white and many more!

Annual dues are \$22.00 per year. Please send this membership form and check made out to the **STRETCH GLASS SOCIETY** and mail to:

STRETCH GLASS SOCIETY
P.O. BOX 573
HAMPSHIRE, IL 60140

MEMBERSHIP FORM
FOR THE



STRETCH GLASS SOCIETY
(Founded April 21, 1974 - Denver, PA)

Mr./Mrs./Ms. _____
(please print full name)

(complete mailing address)

City State Zip

*Phone _____

Signature _____
(please return to address on reverse)

*Phone numbers will be published in the SGS Member Directory
(available to members only), unless notified to do otherwise.

I learned about the SGS through (circle one):
ANTIQUER TRADER DAZE GLASS DIGEST
DEALER OTHER

THE STRETCH GLASS SOCIETY is a national organization designed to stimulate interest in American stretch glass produced from 1916 through 1935. The members share information on the manufacturers and designs of stretch glass. Members are entitled to the newsletter produced quarterly, SGS Member Directory, and may attend the annual Convention and Show held in April.

Through its membership, the Stretch Glass Society can answer most questions concerning the origin, names and colors of stretch glass. May we acquaint you with the makers - Fenton, Northwood, Imperial, Diamond, U.S. Glass, Vineland, Lancaster, Jeannette and Central? At the annual show, you can see colors such as: blue, green, topaz, pink, russet, wisteria, red, tangerine, opaque blue, opaque black, opaque yellow, opaque white and many more!

Annual dues are \$22.00 per year. Please send this membership form and check made out to the **STRETCH GLASS SOCIETY** and mail to:

STRETCH GLASS SOCIETY
P.O. BOX 573
HAMPSHIRE, IL 60140