

MAKERS OF AMERICA'S FINEST GLASS IN COLOR

How to Use This Catalogue

Keep this catalogue on your desk or in your purchase file. It is designed to make it easier for you to place orders for Fenton Glass and to identify the different pieces when you receive your shipment.

As we add new patterns and colors to our line we will send new catalogue pages to be inserted. You will always have a complete record of what is being offered. Please take care of this catalogue—it is valuable to you—and to us

Our price list is also a handy order form—you may use it as an order blank if you wish. Enter quantity of each color in the unshaded space opposite the items you desire. A shaded space indicates the item is not made in that color.

Our colors are shown on the next page, except Ivy—shown on page 11. Shapes and patterns are then shown on the following pages in black and white.

Your suggestions and comments for improving this catalogue are always welcome.

The Fenton Art Glass Company



OFFICES AND FACTORY: WILLIAMSTOWN, WEST VIRGINIA

Nº 5677

PEACH CREST

Cased glass. Gold ruby inside; milk glass outside. Applied crystal edge. Illustrated here in the lovely Tiara pattern.

BLUE OPALESCENT

Fenton's Opalescent glass combines opacity and transparency in one piece. Our Hobnail glass is outstanding because it is made in opalescent colors.

FRENCH OPALESCENT

A combination of milk glass and crystal—shown to beautiful advantage in the Diamond Lace pattern.

CRANBERRY OPALESCENT

Shown above in Hobnail; at right in Coin Dot. An early American color sometimes imitated but never reproduced exactly without using gold ruby glass. Fenton is the only plant in America making gold ruby.

AQUA CREST

Milk glass with a transparent light blue edge. Made with crimped edges in the Victorian mode.

IVY

Fusing milk glass with a deep green overlay producing a beautiful opaque green having a gloss and brilliance that cannot be achieved any other way. Shown on page 11.



GREEN OVERLAY

Cased. Opal inside; green outer layer. Fused together to produce a delicate shade.

CRANBERRY OPALESCENT

Gold ruby cased with French opalescent glass. Gold ruby is not a stain or a decoration but is actually embodied in the glass and is obtained by the addition of coin gold to the glass batch.

BLUE OVERLAY

Opal covered with light blue—shown in the Tiara pattern with crystal cover.

YELLOW OVERLAY

A reverse treatment with yellow inside and milk glass outside. The colors are actually reversed from those shown in illustration.

EMERALD CREST

Milk glass with a sparkling green crimped rim.

SILVER CREST

Shown in black and white beginning on page 14, milk with crystal edge.



The Beauty and Charm
of

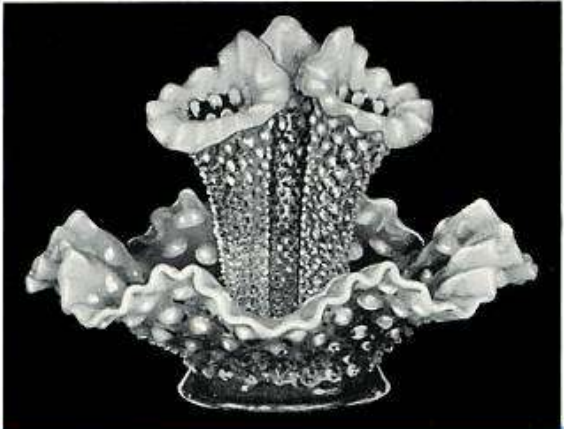
HOBNAIL

by
Fenton



No. 389
Rose Bowl
DISCONTINUED

No. 389
3" D. C. Vase



No. 389
4 piece Miniature Epergne Set



No. 389
13" Ftd. Cake Plate



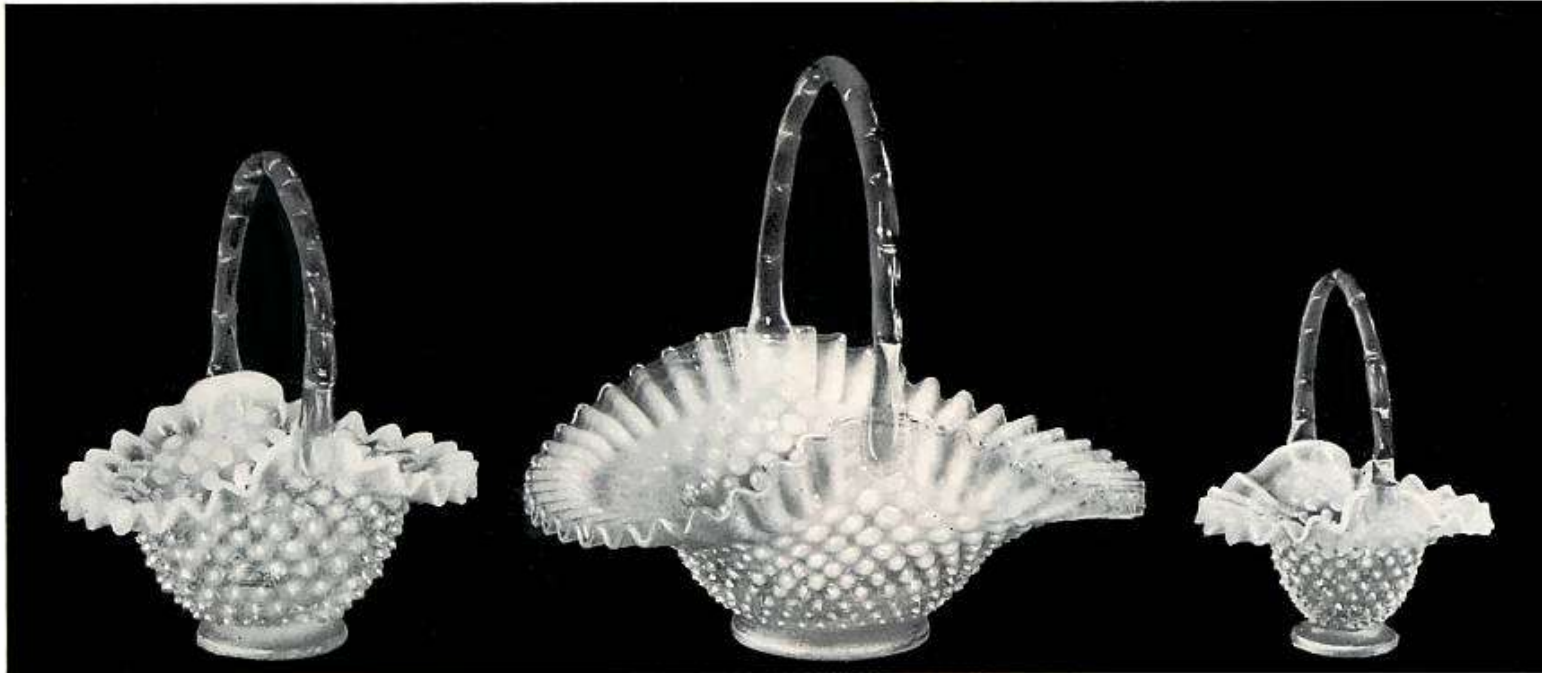
No. 389
6" Bonbon

No. 389
5" Hdl. Bonbon

No. 389
4" Hdl. Bonbon

No. 389
Oval Ash Tray

No. 389
Fan Ash Tray



No. 389
7" Hdl. Basket

No. 389
10" Hdl. Basket

No. 389
4 1/2" Hdl. Basket



No. 389
Slipper

No. 389
Miniature Vase

No. 389
7" Bowl

No. 389
Miniature Cornucopia

No. 389
No. 2 Top Hat



No. 389
Cornucopia

No. 389
9" Bowl

No. 389
Cornucopia



No. 389
3 pc. Mayonnaise Set



No. 389
5½" Hdl. Basket



No. 389
3 pc. Jam Set



No. 389
11" Ftd. Bowl



No. 389
Salt and Pepper Set
w/Chrome Tops



No. 389
No. 3 Sugar and Cream Set

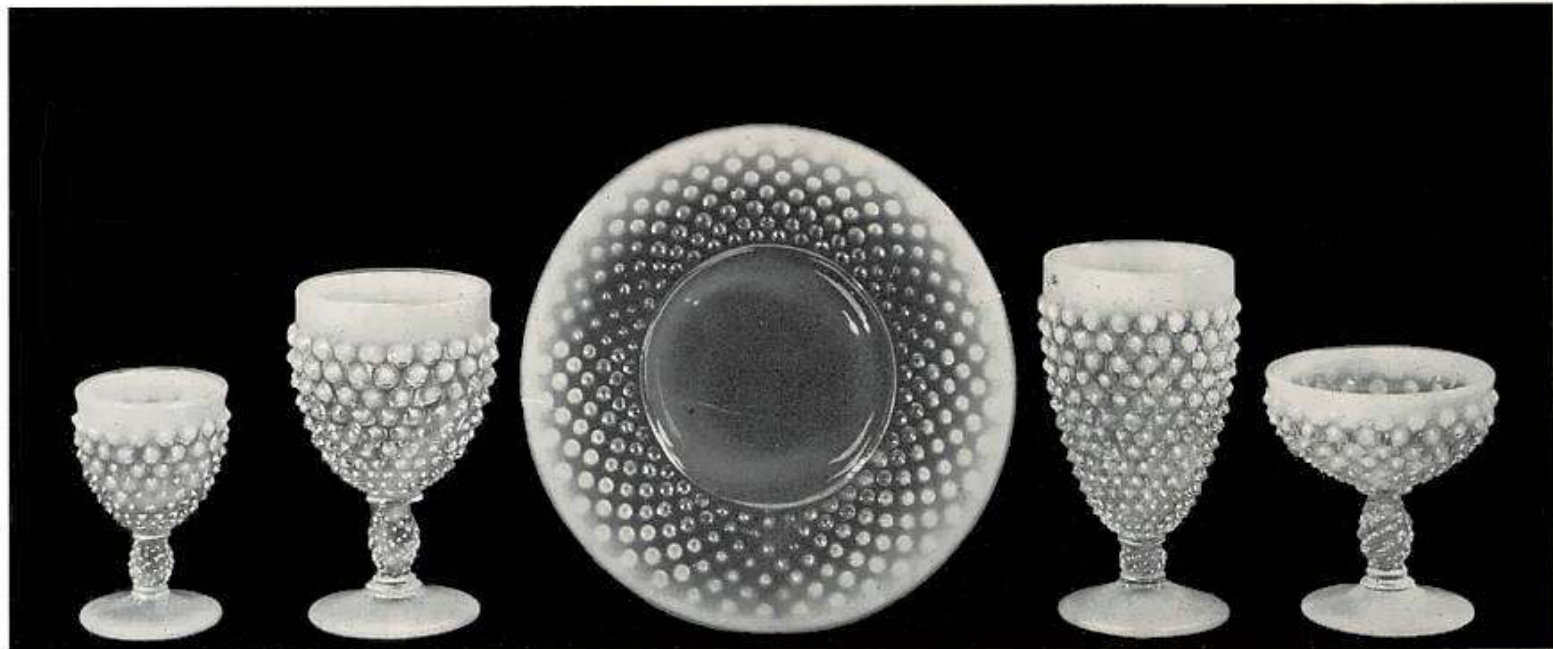


No. 389
Individual Sugar and Cream Set

No. 389
Oil

No. 389
Mustard & Spoon

No. 389
Sugar and Cream Set



No. 389
Wine

No. 389
Goblet

No. 389
8" Salad Plate

No. 389
Ftd. Ice Tea

No. 389
Sherbet



No. 389
4 1/2" Vase



No. 389
5" Vase



No. 389
6" Vase



No. 389
Ftd. Cvd. Candy Jar



No. 389
5 1/2" Vase



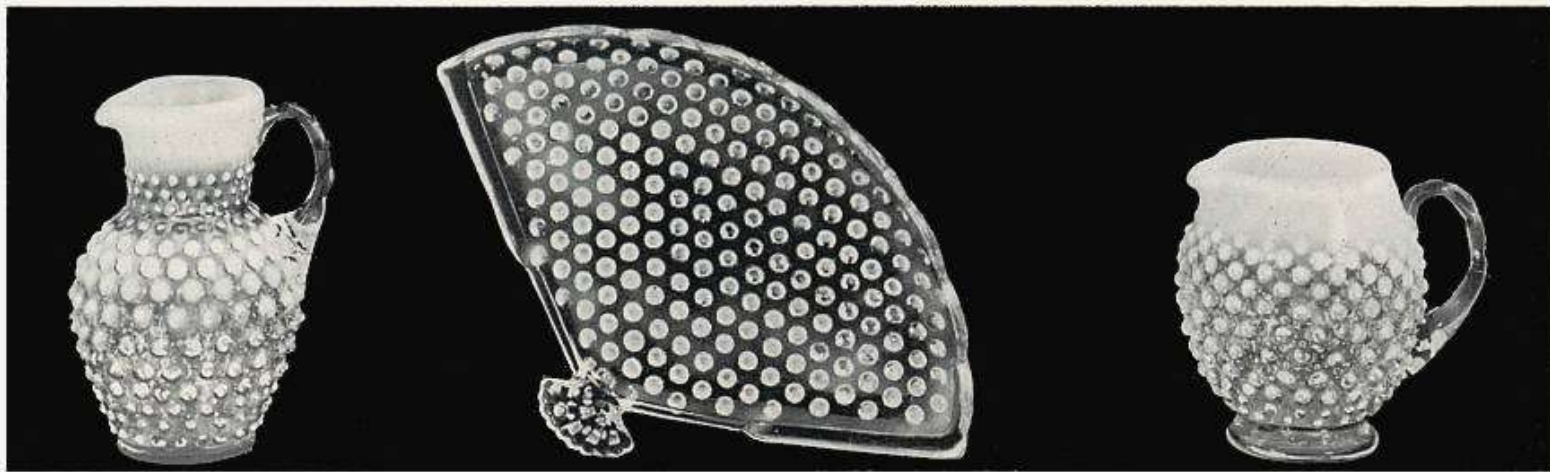
No. 389
6 1/4" Ftd. DC Vase
Also in 4" and 8" sizes



No. 389
6 1/4" Ftd. Fan Vase
Also in 4" and 8" sizes



No. 389
8" Vase



No. 389
5 1/2" Hdl. Jug

No. 389
10 1/2" Fan Tray

No. 389
4 1/2" Hdl. Jug

125

165



No. 389
9 oz. Tumbler

No. 389
12 oz. Tumbler

No. 389
80 oz. Jug

No. 389
5 oz. Tumbler

No. 389
Squat Jug

40
60
110
530

354

354

200



No. 389
Candleholder

*20.00
Cranberry*

No. 389
11" Bowl

*2.35
Cranberry 2.75*

No. 389
Candleholder



No. 389
3 piece Vanity Set

*3.95
4.50
Cranberry*

DISCONTINUED
No. 389
Handled Decanter

No. 389
Cruet

*2.00
2.75
Cranberry*



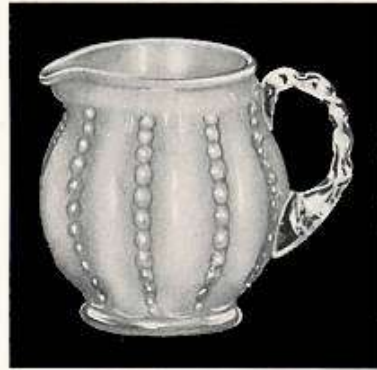
Ivy

a new
exciting
color
in
Crests
and
Overlays

*by
Fenton*



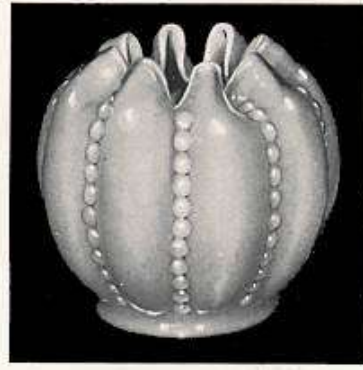
No. 711 ^{2.50}
5" Vase
Also 4" Vase ^{1.65}
_{2.25}



DISCONTINUED



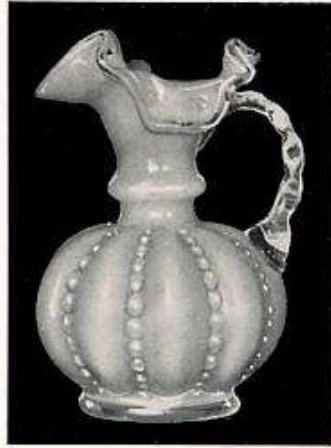
No. 711 ^{1.00}
Miniature Vase ^{1.50}



No. 711 ^{2.75}
4" Rose Bowl
Also 5" Rose Bowl ^{3.00}



No. 711 ^{2.50}
6" Vase
Also 5 1/2" and 8" sizes ^{3.00}



No. 711 ^{5.75}
6" Hdl. Jug
Also 5 1/2" and 8" sizes ^{3.75}



No. 711
9" Vase



No. 711
9" Hdl. Jug



No. 711
Covered Candy Box



No. 711
5 1/2" Bottle



No. 711
3 piece Vanity Set



No. 711
7" Bowl



No. 711
7" Hdl. Basket



No. 711
10 1/2" Hdl. Basket



No. 1924
5" Vase

1.40
1.65

No. 1924
5" Hdl. Basket

1.65
2.25

No. 1924
Top Hat

1.40
1.65

No. 1924
Hdl. Creamer

No. 203
4 1/2" Vase

1.40



No. 1925
6" Hdl. Basket

3.25
3.50



No. 1925
6" Vase

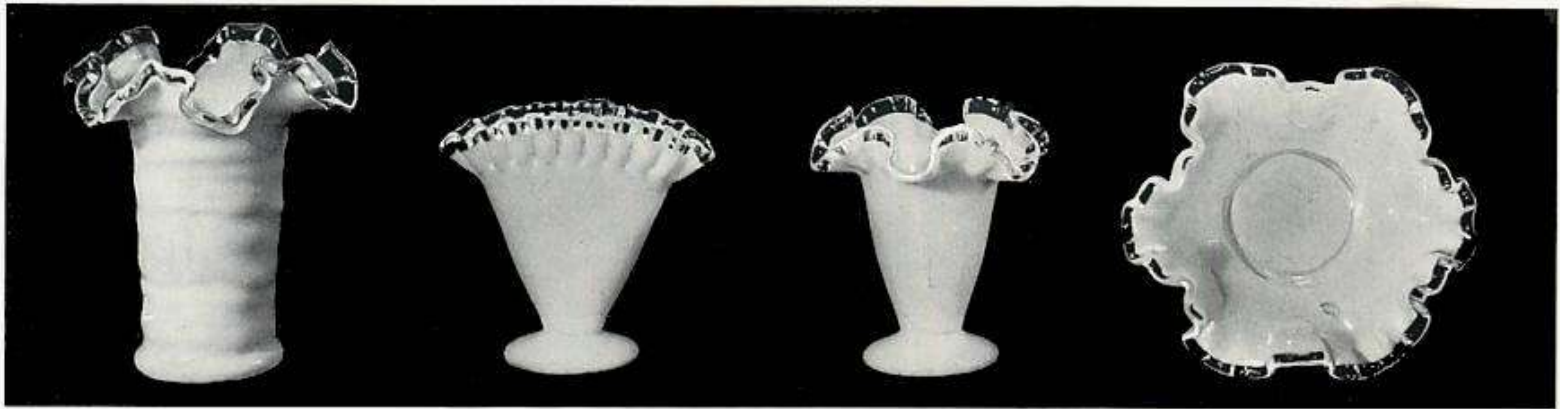
2.15



No. 194
8" Vase
Also 6" and 11" sizes

2.15
1.50

THESE THREE ITEMS ARE
ILLUSTRATED IN IVY



No. 187
6½" Vase 225

No. 36
4½" Fan Vase 50

No. 36
4½" DC Vase 50

No. 36
5½" Bonbon 200



No. 186
8" Vase 225

No. 1523
Candlesticks 100

No. 36
6¼" Fan Vase 140

No. 36
6¼" DC Vase 100



No. 951
Cornucopia

No. 1522/951
6 pc. Epergne Set
(Includes Candlesticks) *6.50*
No. 1522
4 pc. Epergne Set
(Does not include Candlesticks)

No. 951
Cornucopia *65*



No. 680
Candleholder

No. 680
8½" Flared Bowl

No. 680
Candleholder *1.35*

No. 680
3 pc. Console Set



No. 680
2 Tier Tid-bit Tray

Handwritten mark



No. 680
3 Tier Tid-bit Tray

Handwritten mark



No. 1515
Pineapple Goblet



No. 1515
Pineapple Sherbet

CONTINUED

CONTINUED



No. 680
Cup and Saucer

2.25



No. 680
Sugar

2.00



No. 680
Cream

1.50



No. 680
Footed Nut Dish

1.75



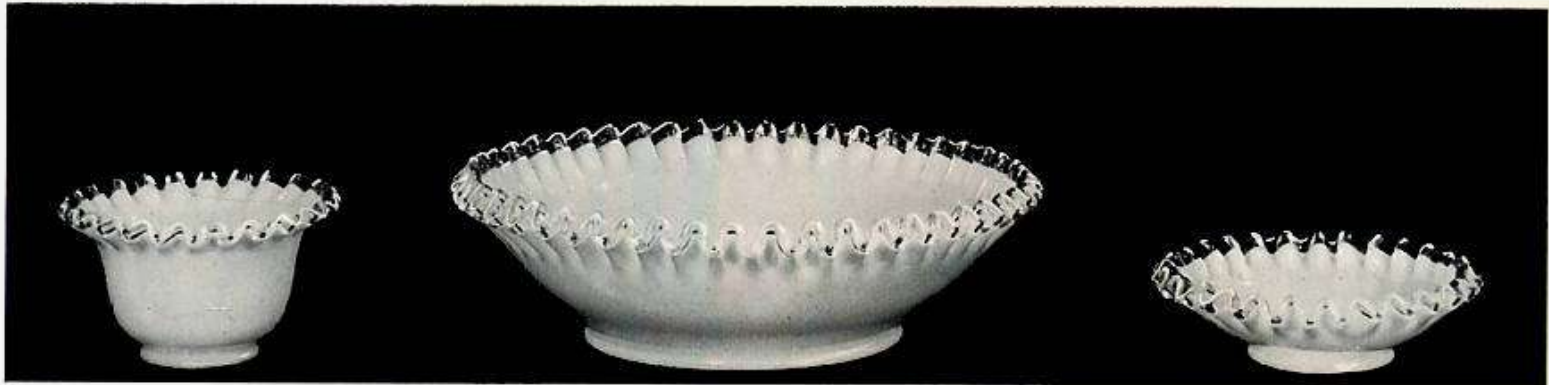
No. 680
Sherbet

1.00



No. 680
Footed Comport DC

1.45



No. 680
Deep Dessert 110

No. 680
10" Salad Bowl 975

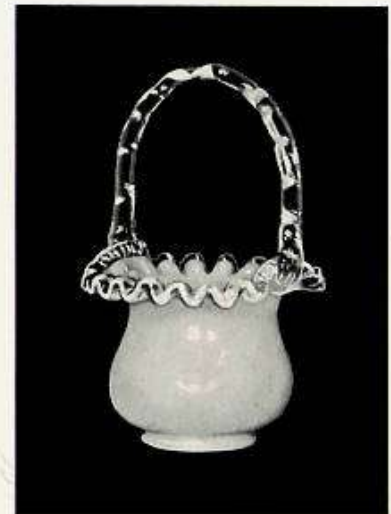
No. 680
Dessert 750



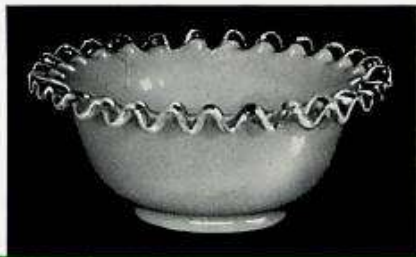
No. 680
Oil 105



No. 680
8 1/2" Plate 140
Also in 5 1/2", 6 1/2", 10" & 12" sizes

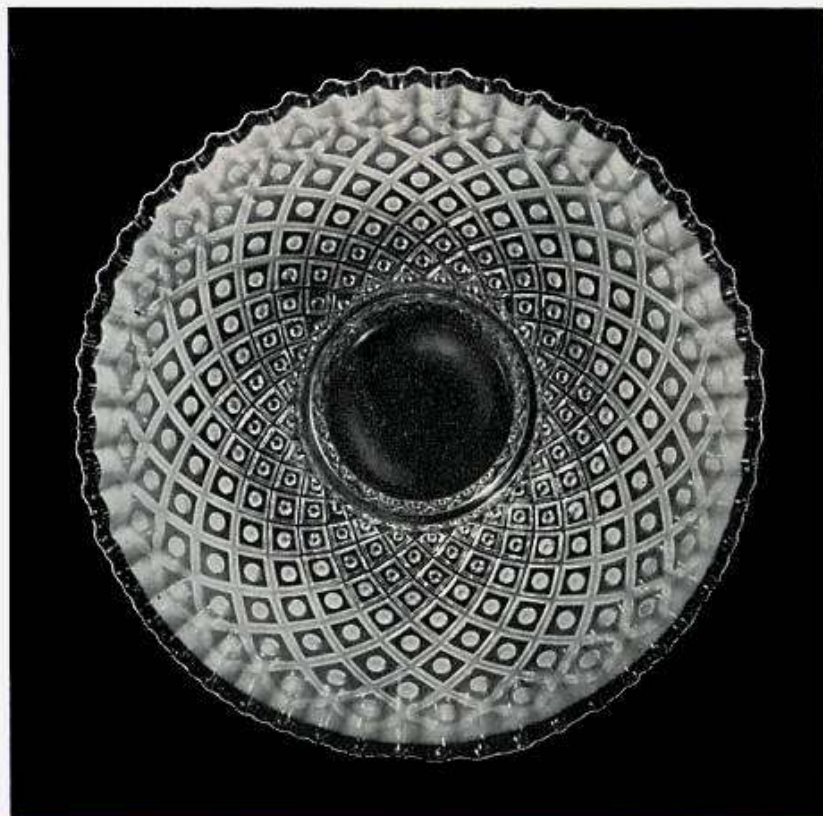


No. 680
5" Handled Basket 250

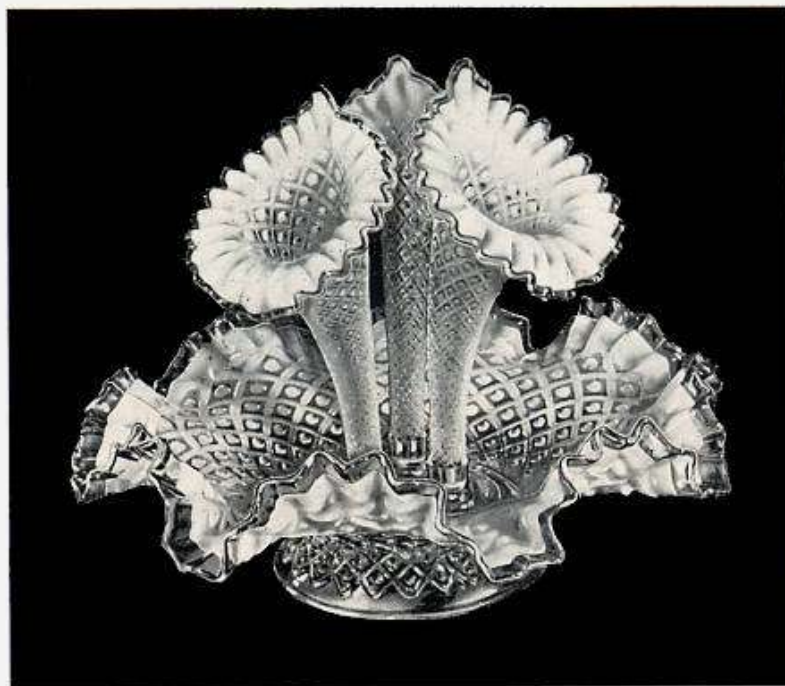


No. 680
Soup 135

Diamond Lace



No. 1948
14" Cake Plate
Also No. 1948-A
11" Cake Plate (No Crest)



No. 1948
4 piece Epergne Set



No. 1948
12" Bowl



DISCONTINUED
 No. 1948
 Cornucopia Candlestick
 Also in 1948 (with Crests)

No. 1948-A
 4 piece Epergne Set
 Apartment Size

No. 1948-A
 Cornucopia Candlestick
 Also in 1948 (with Crests)
DISCONTINUED



No. 1948
 Low Candlestick

No. 1948
 9 1/2" Bowl

No. 1948
 Low Candlestick

No. 1948
 3 piece Console Set



No. 1948
Ftd. DC Comport

2.75



No. 1948
6 1/2" Ftd. Fan Vase



No. 1948
6 1/2" Ftd. DC Vase



No. 1948
8 1/2" Ftd. Plate

2.25



No. 1948
Ftd. Cov. Comport

2.75



1948-A
10" Bowl

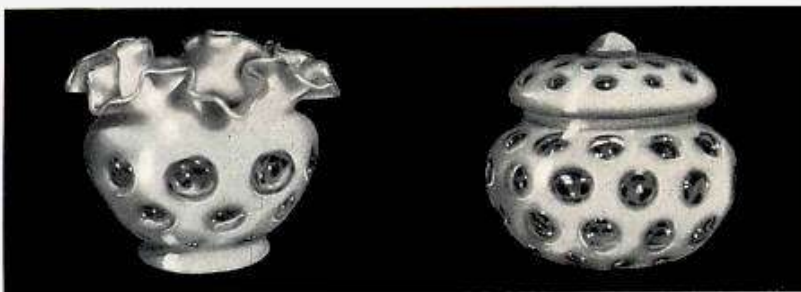
2.25



No. 1948-A
10" Silver

DISCONTINUED

Coin Dot



No. 203
4½" Vase

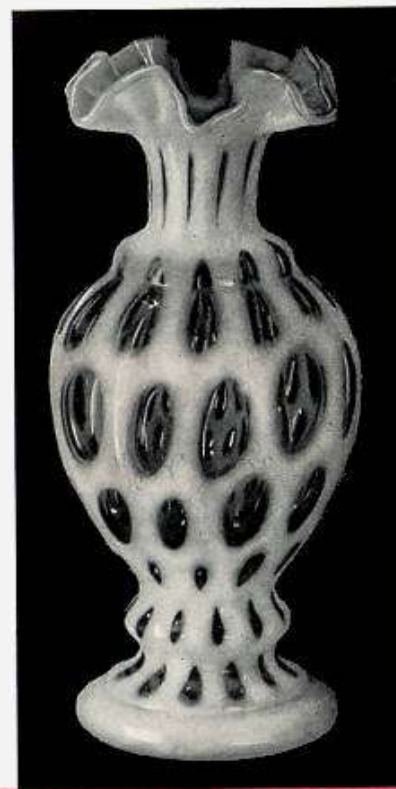
No. 91
Cov. Candy Jar



No. 1924
Creamer

No. 1924
5" Hdl. Basket

No. 1924
Top Hat



No. 194
11" Vase
Also 6" and 8" sizes



No. 194
11" Hdl. Vase
Also 6" and 8" sizes

Handwritten notes:
2/2/81
2/2/81



No. 203
7" Bowl

Handwritten notes:
125
825



No. 1522
Cov. Candy Jar

Handwritten notes:
4/2/81
4/3/81



No. 814
8" Hdl. Bottle
Also 208 - Cruet (7" size)

Handwritten notes:
250
300
2/2/81
2/2/81



No. 201
5" Vase

Handwritten notes:
250
300



No. 189
10" Vase



No. 1934
DISCONTINUED



No. 1353
8½" DC Vase

300/500



No. 201
DISCONTINUED



No. 1925
6" Vase
Also 8" Vase



No. 203
7" Hdl. Basket

100/300



No. 1925
6" Hdl. Basket

215/325



No. 1522
10" Hdl. Basket

*4.50
ex. 5.00*



No. 1522
10" DC Bowl

*3.00
3.50*



No. 92
3 piece Vanity Set

*5.00
6.00*



No. 1524
Candleholder

*1.50
2.50*



No. 1353
10 oz. Tumbler

*1.50
1.50*

No. 1353
70 oz. Jug

*4.50
6.00*



No. 680
3 Tier Planter

80



20
No. 389
15 piece Punch Set w/handled bowl, flared bowl,
or crimped bowl, plate, 12 cups and ladle



110

No. 389
7" Handled Bonbon

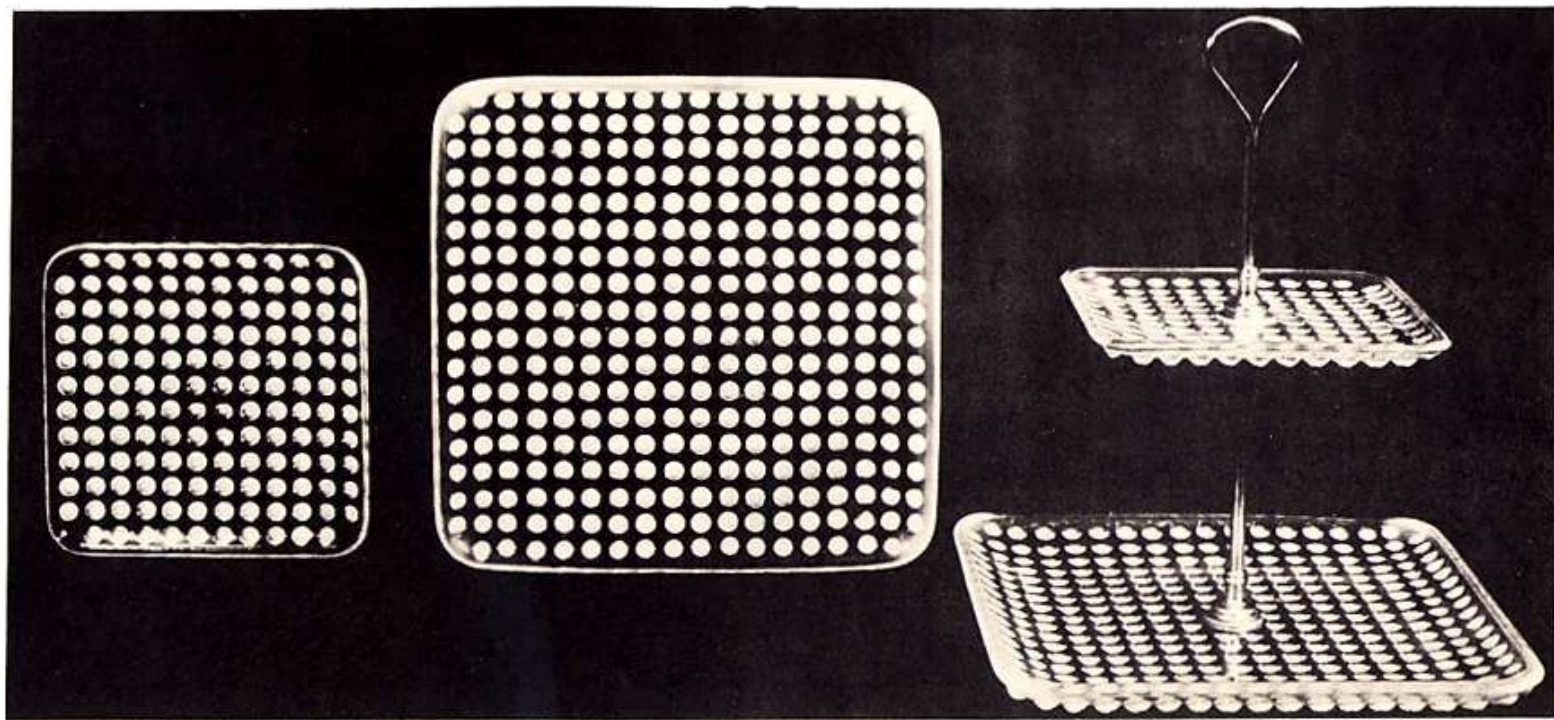
No. 389

7 piece Condiment Set (includes: individual sugar and cream set, oil, mustard and spoon, salt and pepper, plus tray with chrome handle)

800

No. 389
8" Handled Oval Bonbon

110



No. 389
6 1/2" Square Plate

110

No. 389
11" Square Plate

110

No. 389
Two Tier Tid-Bit Tray



No. 1925
6" Vase Spiral
w/Opal Ring

400

No. 1925
5" Vase Spiral
w/Opal Ring

400

No. 203
4 1/2" Vase Spiral
w/Opal Ring

140

100



No. 3005
11" Vase Spiral
w/Opal Ring

50

No. 4516
8 1/2" Vase Spiral
w/Opal Ring

325

No. 194
8" Vase Spiral
w/Opal Ring

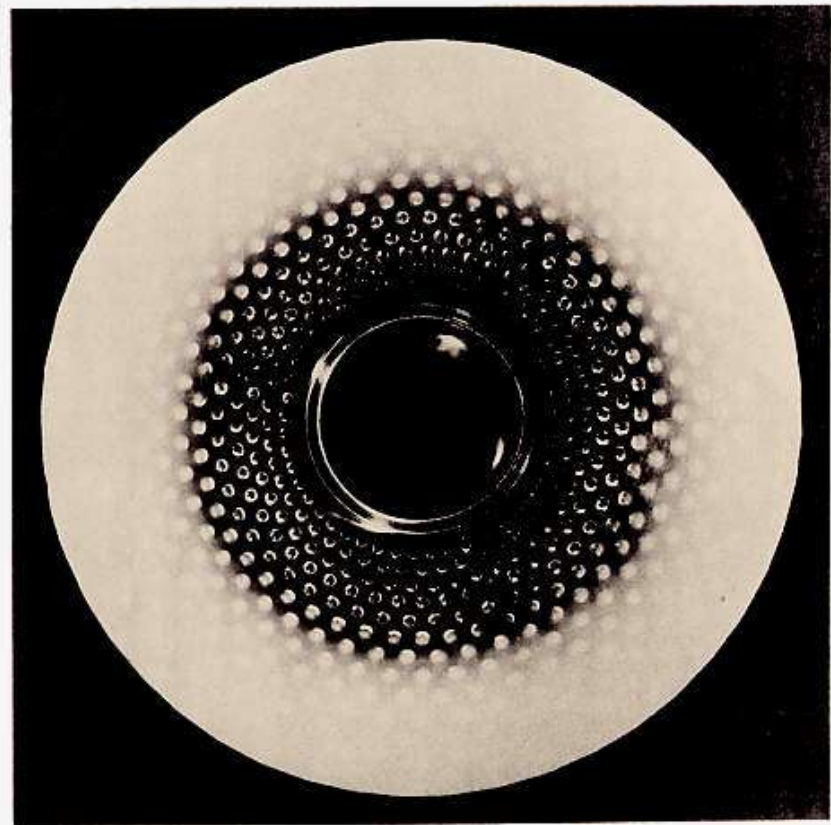
20

No. 3004
9 1/2" Vase Spiral
w/Opal Ring



No. 1948
2 Piece Footed Epergne Set

400



No. 389
16" Torte Plate

500

NEW ITEM ILLUSTRATIONS

The Fenton Art Glass Company

WILLIAMSTOWN, WEST VIRGINIA



No. 389
Goblet—Square



No. 389
Sherbert—Square



No. 389
Wine or Cocktail
Square



No. 389
Dessert—Square



No. 389
Cup & Saucer
Square



No. 389
Low Covered Candy Jar



No. 1728
4 Piece Square Ash
Tray Set





No. 170
2 piece Hurricane Lamp
Snow Crest



No. 1721
8 1/2" Pinch Vase (6 Pt.
Crimp—Fine Crimp)
Snow Crest



No. 1720
7 1/2" Pinch Vase
Honeycomb Overlay and
Diamond Satin



No. 1721
8 1/2" Pinch Vase (Fine
Crimp—6 Pt. Crimp)
Honeycomb Satin and
Honeycomb Overlay



No. 1923
Top Hat (4 1/2" High—5 1/2"
Wide)
Snow Crest



No. 1921
Top Hat (7" High—9 1/2"
Wide)
Snow Crest



No. 3005
7 1/2" Vase
Snow Crest



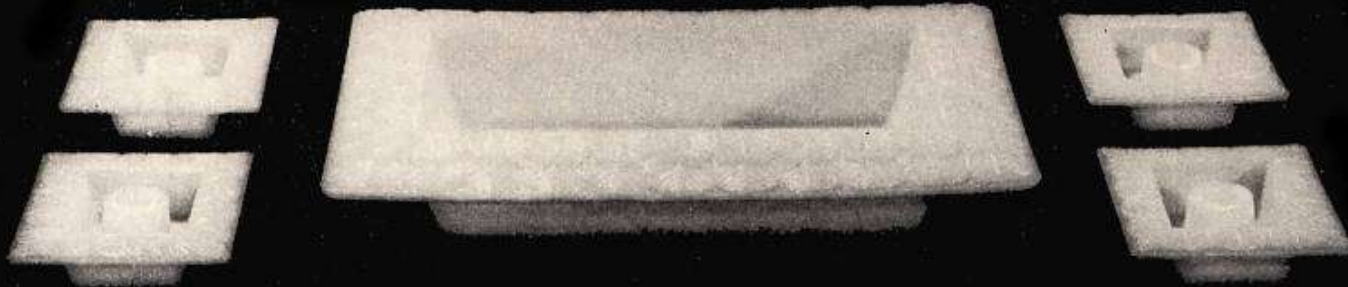
No. 401
Pot and Saucer



No. 400
Pot and Saucer



No. 1729
Pipe Ash Tray



No. 752
5 Piece Console Set

51