

Fenton

LAMP SUPPLEMENT 1969

7400 DV
Mariners Lamp
20" High
Shipping Wt. 9 lbs.

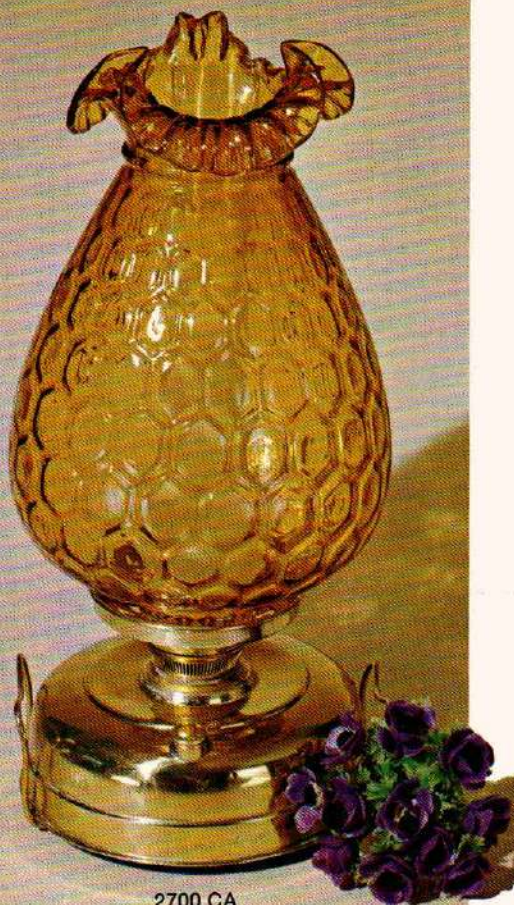
FENTON HANDMADE LAMPS

...for both beauty and tradition

Fenton handmade lamps are attractive reproductions of traditional "showplace" lamps of the past century. Light a few in your display areas and leave some burning in your shop window at night. Their softly glowing light casts a warm spell on their surroundings and draws attention to them.

Each distinctive Fenton Lamp is handblown and handfinished in the finest tradition of glass craftsmanship. The accessory fittings are of the finest quality brass. Each Fenton Lamp bears the Underwriters' Laboratory Seal as well as the Good Housekeeping Seal of Approval. These will help you in selling the lamps by reaffirming their quality.

This year we have added a beautiful and unusual lamp with a choice of three Fenton glass shades. The Mariner's Lamp (the handpainted Violets in the Snow shade illustrated on the cover is one example) is an adaptation of the oil burning Mariner's lamp popular in New England during the 19th century. The base is solid brass and is made specially for Fenton. There is nothing on the market like it. You will find it a lovely addition—and a selling one—to your lamp and glass display.



2700 CA
Mariners Lamp
20" High
Shipping Wt. 9 lbs.



The 3604 OP Boudoir Lamp and the Hobnail Courting Lamps (3792 MI—Oil and 3793 MI—Electric) are illustrated on page 32 of the Catalog.

THE FENTON ART GLASS COMPANY
Williamstown, West Virginia 26187



9208 MI
Rose Student Lamp
19" High
Shipping Wt. 9½ lbs.



9208 CB
Rose Student Lamp
19" High
Shipping Wt. 9½ lbs.



9208 CA
Rose Student Lamp
19" High
Shipping Wt. 9½ lbs.



2700 RO
Mariners Lamp
20" High
Shipping Wt. 9 lbs.



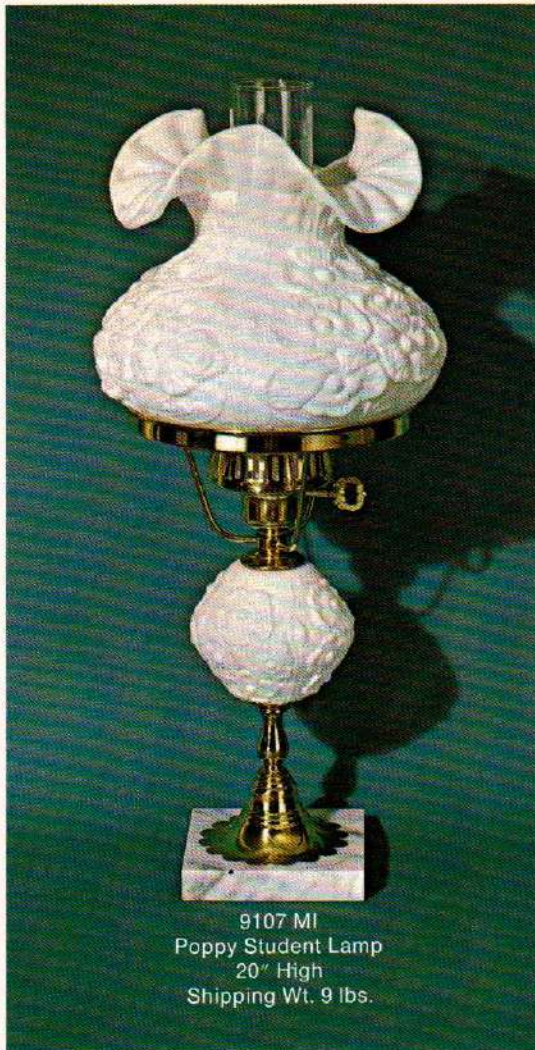
9109 MI
Crimped Poppy
Double Ball Lamp
23" High
Shipping Wt. 11½ lbs.

9109 CA
Crimped Poppy
Double Ball Lamp
23" High
Shipping Wt. 11½ lbs.

9109 CG
Crimped Poppy
Double Ball Lamp
23" High
Shipping Wt. 11½ lbs.



9208 CG
Rose Student Lamp
19" High
Shipping Wt. 9½ lbs.



9107 MI
Poppy Student Lamp
20" High
Shipping Wt. 9 lbs.



9108 MI
Poppy Double Ball Lamp
21½" High
Shipping Wt. 9½ lbs.



1410 RO
Thumbprint
Student Lamp
20" High
Shipping Wt. 12 lbs.



1408 RO
Thumbprint
Student Lamp
19½" High
Shipping Wt. 9 lbs.

1408 CA
Thumbprint
Student Lamp
19½" High
Shipping Wt. 9 lbs.

1408 CG
Thumbprint
Student Lamp
19½" High
Shipping Wt. 9 lbs.



9207 MI
Rose Double Ball Lamp
22" High
Shipping Wt. 11 lbs.



3707 CR
Hobnail Student Lamp
19" High
Shipping Wt. 9½ lbs.



3707 MI
Hobnail Student Lamp
19" High
Shipping Wt. 9½ lbs.