

# F

## FENTON

1994  
Limited Edition  
Collectibles

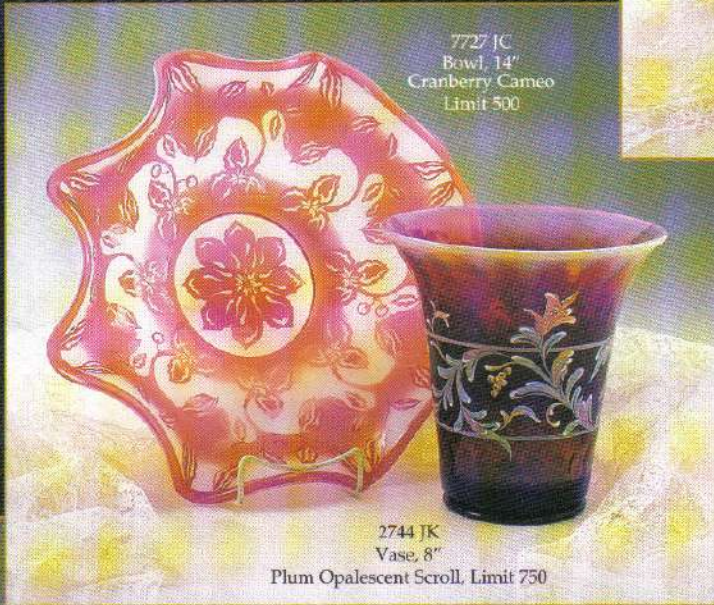
The Connoisseur Collection . . .  
Fenton's commitment to the production of  
rare and unusual glass treatments.

### *Burmese Pitcher - "Lattice Rose"*

The Queen of Art Glass, made only by Fenton. Made with pure gold. Burmese shades from creamy yellow to salmon - pink. Frances Burton designed a coralene lattice pattern to highlight roses which feature heavily sculptured petals and delicate pink centers. Limit 750.

### *Cameo Cranberry Bowl*

This delicate mouth blown bowl is the joint creation of Martha Reynolds and Richard Delaney. It is made of French Opalescent glass layered with pure gold ruby which is carefully carved away to reveal the creamy opalescence below. Truly a masterpiece of art! Limit 500.

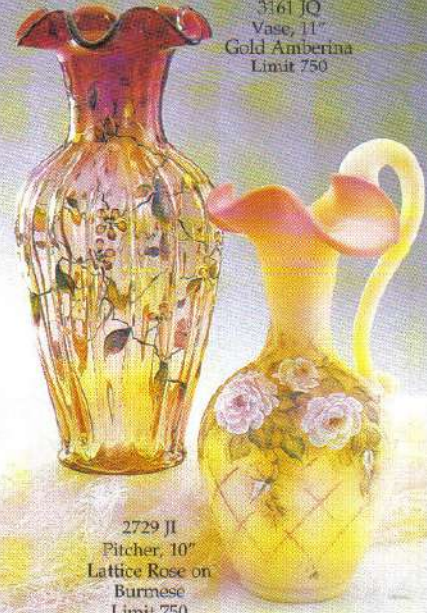


7727 JC  
Bowl, 14"  
Cranberry Cameo  
Limit 500

2744 JK  
Vase, 8"  
Plum Opalescent Scroll, Limit 750

### *Gold Amberina Vase*

Martha Reynolds' twining floral design features highly glazed enamels to complement the glossy Amberina vase. Skilled glass workers begin with gold ruby and carefully wrap amber around it to create the unique shading in each piece. Limit 750.

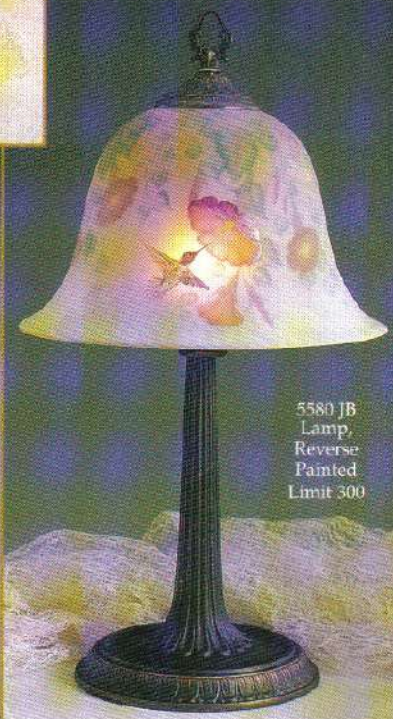


3161 JQ  
Vase, 11"  
Gold Amberina  
Limit 750

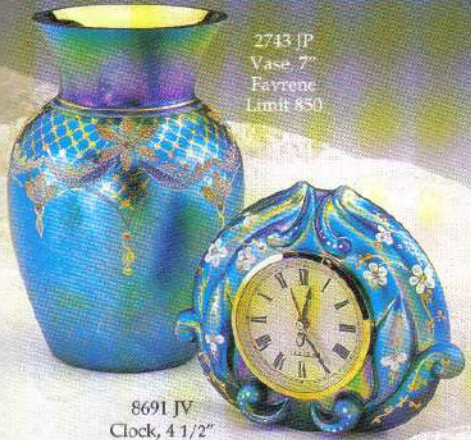
2729 JI  
Pitcher, 10"  
Lattice Rose on  
Burmese  
Limit 750

### *Plum Opalescent Vase*

By special request for Fenton collectors - temperamental Plum Opalescent. Made with gold, this formula resists developing even color throughout. When properly struck, its regal purple shades to soft cotton white. The elegant scrollwork was designed by Martha Reynolds. Limit 750.



5580 JB  
Lamp,  
Reverse  
Painted  
Limit 300



2743 JP  
Vase, 7"  
Favrene  
Limit 850

8691 JV  
Clock, 4 1/2"  
Favrene, Limit 850

### *Favrene*

Favrene was prized by glass lovers of the early 1900's. The glass formula contains silver which must be gently coaxed to the surface by reheating in a special atmosphere. The vase pattern was designed by Martha Reynolds and features coralene flowers highlighted with a matte gold lattice work. Each vase is handpainted by a single artist. The 22K gold interior is then applied, fired, and polished to a sheen. Limit 850.

The clock pattern was designed by Frances Burton who has used raised gold and enamels to create a surface texture on this special glass. Limit 850.

### *Reverse Painted Lamp*

Frances Burton has captured the lovely hummingbird in 3 dimensional art by painting both the inside and outside of the delicate bell shade.

Each lamp is painted and fired in 3 steps over a period of days. Intense colors flowing through the glass are balanced by whisper light shading that blends from blue to pink to yellow. Limit 300.



# FENTON

## 1994 Historical Collection

### A LIMITED EDITION OFFERING

(This color in these moulds will be produced only through November 1994.)

### Stiegel Green Stretch

The Stiegel Green color developed in 1933 is combined with the stretch glass treatment so popular from the 1920's. Stretch glass is produced by spraying with metallic salts and carefully reheating to a satin finish. Most pieces are then flared or crimped in some way causing the iridescent skin to "stretch." Nine new items have been added for second half, six of which are handpainted with a beautiful floral called "Wind Flowers". These pieces are handpainted and then have a ground glass sprinkled on the pattern for texture and dimension.

Refer to 1994 Limited Editions Price List to Order.



5562 SS Jug, 8"



7601 SS 5 Pc. Epergne Set, 13"



5560 SS 5 Pc. Water Set



5554 SS Comport, 5 1/2"



5561 SS Goblet, 6 1/2"



5553 SS Vase, Jack in the Pulpit, 7"



9799 SS Logo, Fenton, 5" w.



5555 SS Basket, Ftd., 7"



5551 SS Basket, Ftd., 9"





2799 SS  
Box, w/ Lion  
Cover, 5" w.

*Stiegel Green  
Stretch  
an exotic glass treat  
ment from the past*

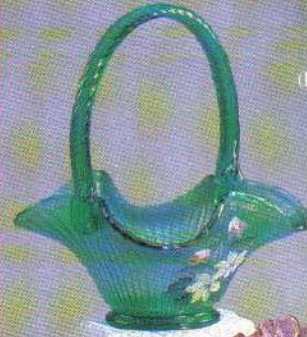
*Family Signature  
Series*

The Family Signature Series is comprised of a few select pieces that represent the glass worker's and glass decorator's finest work. Dated 1994, the two special pieces at right will be inscribed for a limited time with the signature of a second generation member of the Fenton Family.

Save 3%  
0739 AS  
10 Pc. "New"  
Stiegel Green  
Stretch  
Assortment  
(Refer to order  
blank for make-  
up.)



4602 SS  
Urn w/ Cover,  
13"



2767 ST  
Basket, 8"  
Handpainted  
Stiegel Green  
Stretch,  
(Inscribed with the  
signature of  
Bill Fenton,  
Chairman  
of the  
Board.)



1568 CW  
Pitcher, 6 1/2"  
Handpainted  
Cranberry  
(Inscribed with  
the signature of  
Frank M. Fenton,  
past President  
and Chairman of  
the Board.)

2773 SS  
Bowl, Open Edge, 8"



4802 SS  
Epergne, 2 Pc.  
Diamond Lace



5559 ST  
Vase, Handkerchief,  
8"



2759 ST  
Rose Bowl, 3 1/2"



9667 ST  
Bell, Aurora, 7"



4381 ST  
Candy w/Cover,  
5 1/2"



5259 ST  
Sparrow, 5"



5526 SS  
Candlesticks,  
4"

The items shown below were part of collections that were limited in one of the following ways:

- a) Limited to One Year Production - Historical Collection
- b) Limited by Number - Connoisseur Collection, Eggs or Designers Series
- c) Limited to Production by a Certain Date - Valentines, Easter, Christmas Collectibles and Family Signature
- d) Not Limited - Retired from the General Fenton Line

**F E N T O N**



*While Supplies Last!*  
 Limited Quantities Still Available on  
 these Limited Editions.

Handmade  
 in the U.S.A.  
 in the  
 Age Old Manner

