



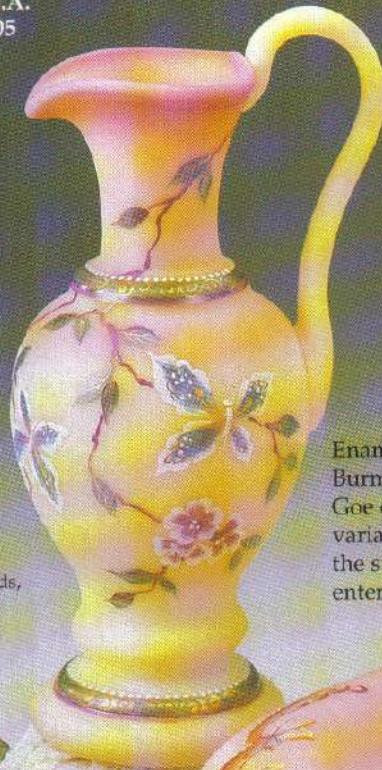
F E N T O N

1995 90th Anniversary
Historical Collection

Burmese

Burmese was the name given to this lovely glass treatment in 1885 by its creator Frederick Shirley, of the Mt. Washington Glass Company in New Bedford, Massachusetts.

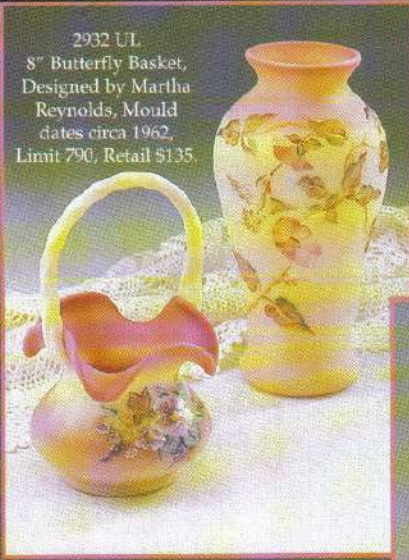
Handmade
in the U.S.A.
since 1905



2968 UN
10" Cherry Blossom Pitcher,
Designed by Martha Reynolds,
Mould dates back to 1948,
Limit 790, Retail \$175.

Shirley's formula calls for uranium and gold as the basic coloring materials. Uranium gives the glass its fluorescent yellow color. The glass is cooled slightly in the process of handblowing and when the edges are reheated for further shaping, the gold particles in the glass join with each other and grow in size, causing the color of the reheated edges to change to the lovely pink typical of this highly desired glass.

Enamored with the soft translucent beauty of Burmese, Fenton Glass chemist Charles W. Goe experimented with innumerable formula variations over a period of many years. With the success of these experiments, Burmese entered the Fenton line in 1970.



2932 UL
8" Butterfly Basket,
Designed by Martha Reynolds, Mould dates circa 1962,
Limit 790, Retail \$135.

2955 UU
9" Hummingbird Vase,
Designed by Martha Reynolds, Mould purchased from Chicago Art Glass in 1991. Inscribed with Fenton family signatures,
Limit 790, Retail \$150.



Designed by Frances Burton, Mould dates back to 1959,
Limit 300,
Retail \$495.

7502 UQ
33" Daybreak Pillar Lamp



2909 UK
10 1/4" Vintage Border Bowl & Base,
Designed by Martha Reynolds, Mould dates back to 1980, Base is dark Plum glass,
Limit 790, Retail \$150.





**1995
Connoisseur Collection
Fenton's Commitment to
the Production of Rare
and Unusual Glass
Treatments.**

Favrene Ginger Jar
Martha Reynolds designed a matte enamel floral to contrast with the metallic shimmer of Favrene in this 3-piece Ginger Jar. Pure silver in the molten glass is coaxed to the surface when the piece is reheated after being blown. The gas and oxygen mix, temperature and timing must be perfectly balanced to achieve the rich silvery finish. The color was originated by L.C. Tiffany as Blue Favrite.



2950 VN
8 1/2" 3 Pc. Ginger Jar,
Limit 790, Retail \$275

Victorian Art Glass Pitcher

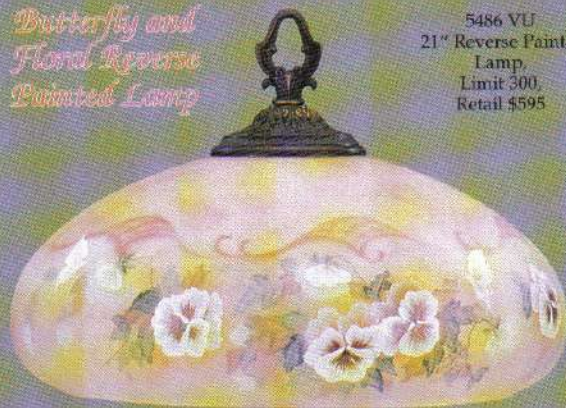
Four glasses are combined to make one dramatic art glass pitcher. Fenton craftsmen take pure gold ruby, cover it with milk glass and then layer it again with Celeste Blue. All three layers must expand and contract compatibly or the

piece will shatter. A crystal ring and handle are deftly applied to the blown pitcher before it is iridized. Martha Reynolds' lilted floral drifts over the surface to complete the piece.



2796 ZM
9 1/2" Pitcher, Limit 490,
Retail \$250

**Butterfly and
Floral Reverse
Painted Lamp**



5486 VU
21" Reverse Painted
Lamp,
Limit 300,
Retail \$595

Fenton has used an original Handel mould to create our 1995 Reverse Painted Lamp. Frances Burton designed the Butterfly and Floral pattern using techniques developed by the Handel Company. When lit, the decoration appears 3-dimensional as the elements, including a delicate butterfly, begin on the outer surface and end on the inside.

Royal Purple Amphora

Royal Purple is created by layering Cobalt glass over pure gold ruby to achieve the deep rich color. Martha Reynolds used gleaming cherries high-

lighted with gold and ivory to complement the polished brass stand and deep purple color.



2947 US
10 1/4" Amphora w/ Stand,
Limit 890, Retail \$195



7691 WF
7" Aurora Vase, Limit 890,
Retail \$125.

Wild Rose Vase

Wild Rose appeared in the Fenton line for a brief 2 years in 1961 and 1962. The gold infused rose formula is layered over milk glass to achieve its beautiful coloration. Martha Reynolds has embellished it with delicate painted roses.

Limited Editions



FENTON

Family Signature

The Family Signature Series is comprised of a few select pieces that represent the glass workers' and glass decorator's finest work. Numbered and dated 1995, the pieces at left will be inscribed for a limited time with signature of two third generation Fenton family members.

Handpainted Trellis and Crested Baskets

French Opalescent glass edged with color. Molten colored glass is quickly spun onto the top edge before each piece is fluted and formed by hand. The Trellis pattern captures a white trellis in blown glass. Designed by Martha Reynolds, each is handpainted with a gold based paint for a rich vining fuchsia floral.

Two sizes of crested baskets are also available with a Cobalt Blue edge.
-1160 IQ - 8 1/2"
-1159 IQ - 6"



1554 S9
9" Vase,
Inscribed with
the signature of
Don Fenton
(Vice-
President,
Sales)



1567 CW
7" Vase, Inscribed
with the signature of
George Fenton
(President)

Save 3%
0891 AS
2 1/2" Trellis Assortment
Refer to order blank for
assortment make-up.



3830 IM
Basket, 10 1/2"



1129 DX
Vase, 7"



2793 DX
Lamp, 18"

1160 IH
Basket,
8 1/2"



1159 IM
Basket, 6"



1160 IM
Basket, 8 1/2"



3830 IH
Basket, 10 1/2"



1143 DX
Vase, 4"



5163 DX
Bird, 4"



1145 DX
Bell, 6 1/2"



1144 DX
Basket, Lily, 8"



5165 DX
Cat, 3 3/4"



1132 DX
Pitcher, 7"



1159 IH
Basket, 6"



FENTON

While Supplies Last

Limited Quantities Still Available on these Limited Editions

The items on this page were part of collections that were limited in one of the following ways:

- a) Limited to One Year Production - Historical Collection, Carnival
- b) Limited by Number - Connoisseur Collection, Eggs, Christmas
- c) Limited to Production by a Certain Date - Valentines, Easter,
- d) Not Limited - Retired from the General Fenton line.

**Handmade
in the
U.S.A.
since 1905**

