



2782 DD
Vase, Berries, 11"
(Limit 1250), \$195.00

BURMESE

Three beautiful hand-painted patterns on gold infused Burmese glass. Robin Spindler created a new version of the fish motif which was popular from 1855 to 1900. Martha Reynolds's elegant Queen's Bird design features a stylized bird and floral highlighted with 22k gold. Frances Burton created the serenity of a water floral. The shimmering dragonfly is applied over raised paste to achieve its dimensional quality.



9855 EV
Vase, Cut-Back, 7 1/2", (Limit 1250),
\$195.00, Mould designed by Jon Saffell.

REVERSE PAINTED POPPIES

Frances Burton designed the Poppies lamp using techniques developed by the Handel Company around the turn of the century. The authenticity of this method can be seen inside the shade where each element is painted and fired resulting in sharp, clear permanent colors that cannot be chipped off. A classic work of art.



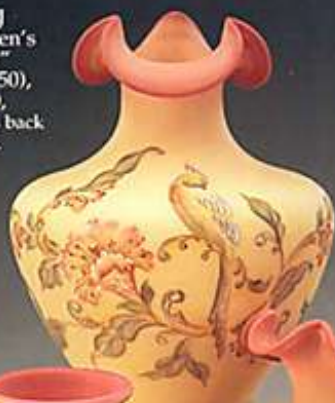
6805 EA
Lamp,
Reverse
Painted,
(Limit 400),
\$750.00

Height to top
of finial: 33"
Width
of shade: 17"

BERRIES ON WILD ROSE

Wild Rose first appeared in the Fenton line in 1961. The gold infused rose formula is layered over Milk Glass to achieve its beautiful coloration. There is only a brief moment when the formulation flashes a true Wild Rose before turning brown. Martha Reynolds has re-developed the lost art of raised paste decorating adding texture to each berry.

3254 QJ
Vase, Queen's
Bird, 11"
(Limit 1350),
\$250.00,
Mould dates back
to 1935.



2960 WQ
Pitcher,
Dragonfly, 8"
(Limit 1450),
\$165.00,
Mould
designed by
Jon Saffell.



9866 TR
Vase, Trout, 8"
(Limit 1450), \$135.00,
Mould designed by Jon Saffell.



FAVRENE CUT-BACK

Favrene was first developed by L.C. Tiffany as Blue Favrite. The formula contains pure silver which is coaxed to the surface through a series of cooling and reheating steps. The mould was designed by Jon Saffell and the lily pattern which is framed by deeply cut borders was designed by Martha Reynolds.

MANDARIN RED

Mandarin Red is a Fenton formula used first in 1933. It is a heat sensitive glass designed to show gentle striations where the colorants react to applied heat causing variation in color from piece to piece. Kim Plaque has designed a 22k gold filled chrysanthemum pattern to coordinate with the cast brass lid.



6584 CD, Box w/lid, Mandarin, 7"w.
(Limit 1250), \$150.00, Mould
originated at the Handel company and
was purchased in 1991.

THE CONNOISSEUR COLLECTION...

FENTON'S
COMMITMENT TO
THE PRODUCTION
OF RARE AND UNUSUAL
GLASS TREATMENTS



REFER TO PAGES 2 & 3 OF THE GENERAL CATALOG FOR ADDITIONAL HISTORIC PIECES

HISTORIC COLLECTION... OPALINE

After receiving many requests for new guest sets and tumble ups, Fenton recreated the deco-styled set. It will be available in Blush Rose along with the bell, basket and Cactus patterned cruet for the remainder of 1996.



1180 TE
Tumble-up Set, 2 Pc., 6"
\$99.50

Guest sets were popular in the 1920's for keeping fresh water at bedside. Fenton produced three styles including this one with its distinctive art deco bands. The sets were also called night sets because of their bedtime use or "tumble-ups" because the upside down tumblers kept flies out of the water.



1147 TE
Basket, 8",
\$65.00

4568 TE
Bell, 6 1/2", \$35.00

3463 TG
Cruet w/stopper,
Cactus, 6 1/2", \$75.00



8257 PQ
Vase,
Peacock, 8",
\$32.50



3429 PQ
Comport,
Cactus, 5 1/2",
\$25.00



8475 PQ
Candleholders, 4", \$39.50

CHAMPAGNE SATIN & MEADOW BEAUTY

A few additional items to freshen this top selling look.

REFER TO PAGES 8 & 9 OF THE GENERAL CATALOG FOR ADDITIONAL CHAMPAGNE SATIN AND MEADOW BEAUTY PIECES



5151 PD
Bear, 3 1/2", \$22.50

5165 PD
Cat, 3 3/4", \$22.50

FAMILY SIGNATURE SERIES

Numbered and dated 1996, the pieces at right will be inscribed for a limited time with the signature of a third generation Fenton Family member. The vase is made of Spruce Green, handpainted with a white magnolia, and inscribed with the signature of Tom Fenton, Vice-President, Manufacturing. The basket is made of rich Cranberry Pearl glass, handpainted with a Starflower pattern and signed by Mike Fenton, Purchasing and Safety Manager.

4759 SE
Vase, 10",
\$80.00,
Inscribed with the
signature of
Tom Fenton.



3127 NG
Basket, 7 1/2", \$75.00
Inscribed with the
signature of
Mike Fenton

Limited to Sales
through
October 31, 1996.

3076 DP
Basket, 8",
\$75.00



1648 DP
Vase,
Hexagonal, 9",
\$85.00

1683 DP
Vase, Aurora, 7",
\$57.50

3127 KT
Basket,
7 1/2",
\$69.50



1683 KT
Vase,
Aurora, 7",
\$57.50

3065 KT
Pitcher, 6 1/2",
\$60.00

HANDPAINTED OVERLAY GLASS IN DUSTY ROSE AND GOLD

Colored glass layered over a core of Milk glass . . .
created by the master glass craftsmen at Fenton,
then handpainted and signed by the artist.



HANDMADE IN THE
U.S.A. SINCE 1905

HISTORIC COLLECTION ... MULBERRY

0450 PK
5 Pc. Mulberry
Prepack



5581 MD
Lamp, 21",
Evening Blossom
w/Ladybug,
(Limit 500), \$495.00,
Lampshade mould
acquired from Chicago
Art Glass in 1991, first
appeared in Fenton line
in 1995.

The exotic Mulberry glass color was first made in 1942, but it was sold for only six months because of production difficulties. The color was reintroduced to the Fenton line after additional experimentation and development work in the late 1980's. Mulberry is a handblown, cased glass which fades from a deep burgundy to rich blue. It is formed by covering a gold ruby core with blue glass using a special glass-making technique to create the subtle color transition. The rich Mulberry color is glass craftsmanship at its finest.

Each piece is handpainted and signed by the artist and features one of two decorations. A precious hummingbird darts among old fashioned Wild Roses designed by Martha Reynolds and a sweet ladybug works her garden magic among the Evening Blossom flowers designed by Robin Spindler.

1671 MD
Pitcher, 7 1/2",
Evening Blossom
w/Ladybug,
(Limit 1250), \$95.00,
Mould dates back
to 1960.

STRICTLY
LIMITED
AND
NUMBERED



1689 MS
Vase, 9 1/2",
Hummingbird
and Wild Rose,
(Limit 1250),
\$95.00,
Mould
acquired in
1991 from
Chicago
Art Glass.



1531 MS
Basket, 8", Hummingbird and Wild Rose,
(Limit 1250), \$95.00, Mould dates back to 1962.



2750 MS
Vase, Melon Herringbone, 8",
Hummingbird & Wild Rose,
(Limit 1250), \$85.00,
Mould first appeared in Fenton line in 1994.

