

HISTORIC COLLECTION... RUBINA VERDE

Rubina Verde is a historic glass that shades from ruby (rubina) to green (verde). It was named by Hobbs, Brockunier & Company circa 1886, but variations of the color have been made over the past 100 years.

The process for making Rubina Verde begins with gold ruby on the end of a blowpipe which is then cased with Sea Mist Green. This process requires great skill and planning by the caser who prepares the glass for blowing to achieve the shading from red through the green color below it. The piece is formed by blowing the molten gob into the final forming mould and is then finished in some way by crimping and handling.

The decoration was designed by Martha Reynolds. Note the dragonfly hovering close to the flower.

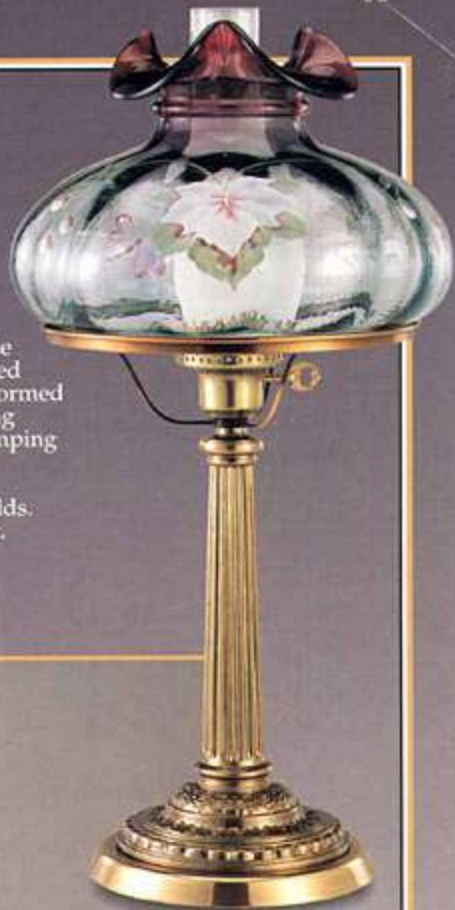
HANDMADE IN THE U.S.A.
SINCE 1905



1581 BW
Box, Melon,
5 1/4"
(Limit 1750)
\$135.00



7458 BW
Vase, Melon, 11"
(Limit 1750)
\$135.00



1507 BW
Lamp, 24"
(Limit 650)
\$495.00



7565 BW
Vase, Reverse
Melon, 8"
(Limit 1750)
\$95.00



7139 BW
Basket, Melon, 7 1/2"
(Limit 1750) \$99.00



3066 BW
Pitcher, 6"
(Limit 1750)
\$95.00



The blocker blows the first air bubble into the molten gob of gold ruby and Sea Mist Green cased glass.



Strictly
Limited
and
Numbered

FENTON



THE CONNOISSEUR COLLECTION . . .

FENTON'S COMMITMENT TO THE PRODUCTION OF RARE AND UNUSUAL GLASS TREATMENTS

FENTON FAVRENE

Favrene art glass was first developed in the late 19th century. This beautiful iridescent blue had been made experimentally in Bohemia and Italy, but it was Louis C. Tiffany who made it popular worldwide as Blue Favrite. In 1904 Frederick Carder produced a similar glass at Steuben which he named Blue Aureen. Our Fenton Favrene contains cobalt and precious metals and must be worked under exacting conditions of both heat and oxygen to coax out the base color.

SANDCARVED FAVRENE DAISY VASE

The floral sandcarved design on the vase was designed by Martha Reynolds and is highlighted with 22k gold paint. The vase features a brass-lacquered mount with a removable cap. The mould for this vase was purchased from Imperial Glass in 1983.

8807 FR
Vase, Daisy, w/lid, 9"
(Limit 1350)
\$295.00

Each year Fenton carefully selects a small grouping of art objects - - unique in design and made in exotic glass treatments and limited in number. Sure to please those who have the expert knowledge and discriminating taste to appreciate the finest in art glass.



BURMESE FENCED GARDEN BASKET

The Fenced Garden decoration was designed by Robin Spindler and is highlighted with crushed glass ice, which has been fused to the glass for a permanent sparkle, and 22k gold. The mould was new in 1996 and was designed by Jon Saffell.

7632 BQ
Basket, Burmese, 11 1/2" (Limit 1750) \$160.00



2961 BY
Vase, Trillium, 9 1/2",
Features 11 Fenton
Family Signatures
(Limit 1750)
\$195.00

BURMESE TRILLIUM VASE

The beautifully detailed Trillium pattern was designed by Robin Spindler. Inscribed with the signatures of 11 Fenton family members, the vase is made from a mould that was first used circa 1932.

BURMESE

Burmese was the name given to this exotic glass treatment in 1885 by its creator Frederick Shirley, of the Mt. Washington Glass Company in New Bedford, Massachusetts. Shirley's formula calls for uranium and gold as the basic coloring materials. Uranium gives the glass its fluorescent yellow color. The glass is cooled slightly in the process of

handblowing and when the edges are re-heated for further shaping, the gold molecules join with each other and grow in size, causing the color of the reheated edges to change to the lovely pink typical of this highly desired glass.

After years of experimentation by Fenton chemist Charles W. Goe, Burmese entered the Fenton line in 1970.



HANDMADE IN THE U.S.A.
SINCE 1905

SCENIC FLORAL REVERSE PAINTED LAMP

Designed by Frances Burton, the reverse painted shade has been painted in the manner developed by the Handel Company. The sheer, clean color is achieved by painting and wiping steps. Look inside. No overall spray muddies the purity of the pink floral.

Fenton does not have a mould large enough to create this impressive 18" shade. We requested this shade from Davis-Lynch, a WV producer of hand-blown lighting fixtures. It is satin finished and handpainted in multiple painting and firing steps by the artisans at Fenton.

7939 BJ
Lamp, Reverse Painted, 24 1/2"
(Limit 550)
\$750.00



OPALINE FLORAL VASE

This vase has been hand-blown of Opaline glass which has been chilled and reheated to achieve its translucent character. The highly-detailed handpainted pattern was designed by Martha Reynolds. The mould was first used circa 1947.



FRENCH OPALESCENT "TRANQUILITY" VASE

This exciting vase is made of French Opalescent glass which has been fired all over to create the sheer white translucency. The handpainted pattern, designed by Robin Spindler, is highlighted with 22k gold paint to create the golden archway. The mould was new in 1996 and was designed by Jon Saffell.

9866 FX
Vase, Square, 8"
(Limit 1500),
\$135.00



2965 UD
Vase, Opaline
Floral, 9"
(Limit 1500)
\$95.00

WILD ROSE PITCHER

Wild Rose first appeared in the Fenton line in 1961. The gold infused rose formula is layered over Milk Glass to achieve its beautiful coloration. There is only a brief moment when the formulation flashes a true Wild Rose before turning brown. The handpainted tea rose pattern was designed by Kim Plauche'. The mould was first offered in the '40's in the coin dot pattern.



8966 ZJ
Pitcher, Wild Rose, 6 1/2" (Limit 1350)
\$175.00



EACH PIECE IS NUMBERED AND
INCLUDES A CERTIFICATE OF AUTHENTICITY

FENTON



HISTORIC COLLECTION... TOPAZ OPALESCENT

Three additional pieces to add to this year's Historical Collection. The handpainted Hydrangeas fan vase is made from one of the earliest Fenton moulds which was first used circa 1927. It is a Family Signature Series piece and will be inscribed with the signature of Tom Fenton, a third generation family member and Vice-President of Manufacturing. It is limited to sales through October 31, 1997 and the other two pieces will be available for the remainder of 1997.

REFER TO PAGES 2 & 3 OF THE GENERAL CATALOG FOR ADDITIONAL TOPAZ PIECES.

9550 TP
Fan Vase, 8"
Family Signature
Piece (Tom Fenton)
\$75.00



2919 TS
Basket, Paneled
Grape, 5 1/2"
\$32.50

5197 TP
Happiness Bird, 6"
\$35.00

REFER TO PAGES 26 & 27 OF
THE GENERAL CATALOG FOR
ADDITIONAL CRANBERRY PIECES.

CRANBERRY

Five exciting new pieces to add to your Cranberry collections. Fenton's top-selling color, Cranberry is made with pure gold in the formula just as it was done 100 years ago.

0925 AS
Save 3%
8 Pc.
Assortment

3559 CC
Vase, Spanish
Lace, 8"
\$55.00

4758 CC
Vase, 8 1/2"
\$59.50

1506 CC
Bowl
w/base, 6"
\$105.00

7139 CC
Basket,
Melon, 7 1/2"
\$65.00

2996 CY
Crystal Base,
4 1/2"
\$20.00

1589 CC
Box w/lid, 5"
\$99.50



9799 FO
Logo, 5" w., \$25.00



FENTON

HANDMADE IN THE U.S.A.
SINCE 1905

The Fenton Art Glass Company
700 Elizabeth Street, Williamstown, West Virginia 26187
(304) 375-6122, FAX (304) 375-6459