



2005 JUNE  
SUPPLEMENT



*Glassworkers and their families enjoy a summer picnic in this early twentieth-century photo.*



## Centennial Collection

The countdown to our 100th birthday culminates with the final installment of the Fenton Centennial Collection, wherein two family members select a piece to reflect their personal preferences in glassmaking artistry. The year 2005 completes the collection with two special selections from third generation members, Nancy and George Fenton. Each piece will be numbered and inscribed with the family member's signature in addition to bearing the Centennial Collection logo. **Limited to sales through 11/15/05.**

### "Manuscript Floral" Favrene Amphora

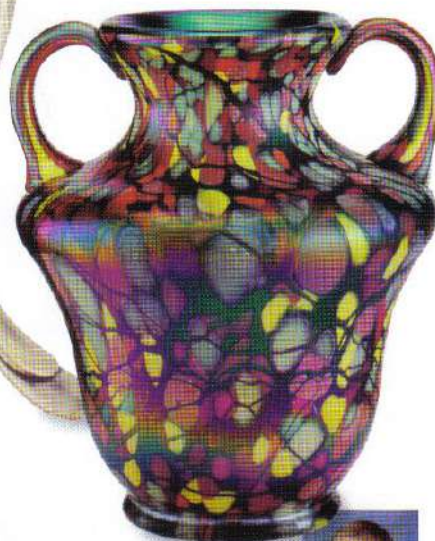
Nancy's favorite glass color is Favrene, and her favorite vase shape is the amphora. At the inception of the Centennial Collection she staked her claim! The result is a spectacular piece that bears a Frances Burton vining floral motif adapted from an image of a 16th century etched gold pitcher Nancy found while researching antiques. Favrene glass is made with silver that is coaxed to the surface in a special reheating process. When sprayed with metallic salts it develops a silvery-blue satin luster.

### "Myriad" Mosaic Vase

George Fenton honors our past and celebrates the future with this unique art glass creation utilizing an original mould shape from the 1920s that is on trend for today with its retro style. Mosaic glass begins with Black glass covered in opaque glass chips and reheated; due to the random nature of the chip application, no two pieces will be the same, making each a unique example of the glassmakers' artistry. A true art glass creation that exemplifies the Fenton family commitment to carry a 100-year glassmaking tradition through generations to come.



4177 ZH  
Amphora, 14 1/2"  
"Manuscript Floral" Favrene  
Nancy Fenton  
Director of Design



4354 1N  
Vase, 6 1/2"  
"Myriad" Mosaic  
George Fenton  
President



F E N T O N

Handcrafted American Glass Artistry

*"Floral Filigree"  
Burmese Lamp*

Inspired by a completely new Lamp shape developed for the Platinum Collection, designer Stacy Williams created the intricate "Floral Filigree" motif, based on a 16th century manuscript design of florals and scrollwork. The past meets the present in this beautiful Burmese Lamp that glows with warmth and blushes rose from the addition of pure gold to the formula.



6604 ER  
Lamp, 21 1/2"  
(Limit: 1000)



4356 ER  
Basket, 8 1/2"  
(Limit: 1950)



The 2005 Showcase Dealer Fall Exclusive is a Burmese Basket designed to match the "Floral Filigree" Burmese Lamp. This exclusive piece is individually numbered and limited in sales to authorized Fenton Showcase Dealers. Each Basket will be inscribed with the signature of Scott Fenton and feature the 100th Anniversary backstamp.

*2005 Platinum Collection*

Showcasing the best of Fenton Art Glass—past, present and future.

Each piece has been carefully selected to highlight a distinctive Fenton glass color, specific decorating style, or an aspect of glass artistry that has made Fenton the premier U.S. glass manufacturer today. Each piece bears the 100th anniversary logo, is individually numbered and strictly limited.

*"Burmese Beauty"*

L. G. Wright first brought the moulds for this reproduction of a Victorian epergne to Fenton in the 1940s to see if it could even be made; Frank Fenton accepted the challenge and the rest is history! Handcrafting six individual pieces of glass to both fit together and match in color and amount of striking is a testament to the skill of the Fenton craftsmen. Pure gold in the formula creates a blush of rose, while uranium gives Burmese its yellow hue. A dazzling centerpiece with 100 years of history.



6610 BR  
Epergne, 18 1/2"  
(Limit: 1250)

*"Tuscan Fields"  
on Lotus Mist Burmese*

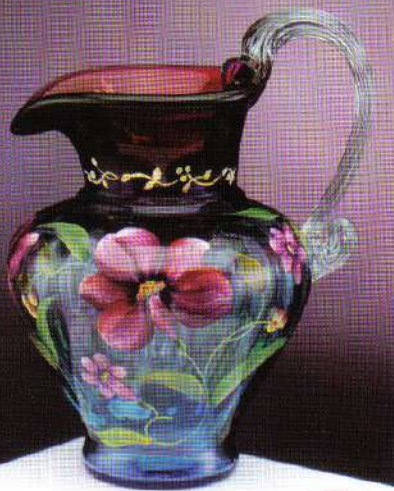
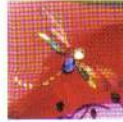
Recalling the warmth of the Tuscan countryside, Robin Spindler created a sheltered valley design, rich with accents of 22k gold. Carefully handpainted on a field of Lotus Mist<sup>®</sup> Burmese glass, this three-part Fairy Light features a special base handcrafted of gently folded glass. Lotus Mist Burmese is a color unique to Fenton, inspired by George Fenton and developed by chemist Wayne King. The addition of pure gold to the formula results in a blushing rose hue.



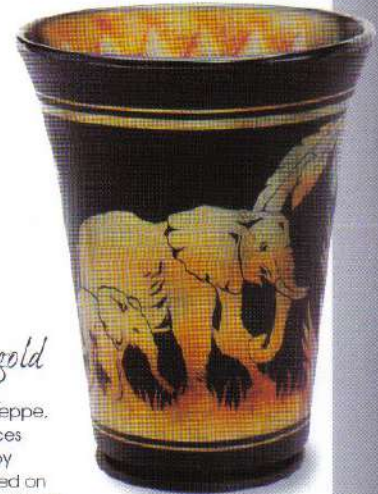
7501 HY  
Fairy Light, 3 pc., 7 1/2"  
(Limit: 1950)

### "Dragonfly Dalliance" on Mulberry

Mulberry glass is formed when a bud of pure gold Ruby is covered with Azure Blue and carefully blown to shade from magenta to blue, a most difficult art glass treatment. Designer Kim Barley added a touch of whimsy and mystique to her vivid floral and berry pattern—a 22k gold dragonfly, sparkling with Swarovski crystal accents, perches just inside the rim of the pitcher. Each handpainted pitcher is accented with highlights of 22k gold.



3287 5W  
Pitcher, 7 1/2"  
(Limit: 1000)



### "Elephant Walk" on Black Marigold

Inspired by the rugged beauty of the Maasai Steppe, the habitat of African elephants, designer Frances Burton created this tribute to a mother and baby elephant walking through grasslands, sandcarved on Black Marigold glass. The Vase shape is an early Fenton design from the 1920s, with a fascinating diamond-patterned interior that showcases the Marigold iridescence, while the elephant relief is captured in rich copper tones.

2744 E6  
Vase, 8"  
(Limit: 1250)

### Butterfly Koi

The long flowing fins of the Butterfly Koi are resplendent in the silver shimmer of Favrene glass. These prized fish are the most elegant of the Koi family yet also the most hardy. The sculpture of Jon Saffell captures their graceful beauty.



5276 FN  
Fish, 5"  
(Limit: 2500)

### "Cabernet Blush" on Blue Burmese

This vase shape was designed by Jon Saffell, handcrafted in Blue Burmese. Pure gold in the formula causes a delicate blush of pink on gorgeous Blue Burmese, enhanced with Frances Burton's luscious "Cabernet Blush" design. Handpainted and highlighted with accents of 22 karat gold, each piece is a testament to a century of glassmaking in the age-old tradition.



4355 XP  
Vase, 8"  
(Limit: 1950)

### "Hobstar" Aquamarine Opalescent Punch Bowl

Using moulds acquired from Indiana Glass, Fenton has transformed Aquamarine Opalescent glass into a functional and elegant work of art. Aquamarine Opalescent glass is pressed into a hobstar pattern mould to create the shape, then iridized and reheated to a satiny finish. The eight-quart Punch Bowl comes with four matching tumblers.



4270 9N  
Punch Bowl Set, 12" dia.  
(Limit: 1250)

4272 4Y  
Tumbler, 4 1/2"

*Platinum Collection*



4251 ZJ  
Vase, 8 1/2"  
(Limit: 1950)

*"Pansy Sunrise" on Rosalene*

Inspired by the crisp perfection of pretty pansies peeking through the early morning dew, designer Stacy Williams created "Pansy Sunrise", a delicate motif embellished with accents of 22k gold. The secret to Rosalene is the pure gold in the formula which allows the glass to blush from cool white to a lovely pink wherever it has been chilled and reheated. (Limit: 1950)

*"Lacquer Red" Ginger Jar*

Glass as it was meant to be—resplendent, ravishing and very, very red! Milk glass is covered in deep rich Ruby, and then handcrafted into a classic Ginger Jar shape. Framed with a Black glass cap and base, dark as ebony, its simple elegance needs no further embellishment. (Limit: 2500)

2950 UM  
Ginger Jar Set, 8 1/2"  
(Limit: 2500)



3488 CK  
Cactus Candy Box, 6"

*Chocolate*

Rich Chocolate glass ranges in color from a deep mocha shade to a milky cocoa color, and no two pieces are ever the same. Dating back to 1907 at Fenton, Chocolate glass is a collector favorite, specially reissued to celebrate our 100th anniversary. Five new shapes have been created for Chocolate aficionados to celebrate. Each piece bears the 100th Anniversary backstamp and is offered only throughout 2005.

*Art Book*



FG973  
Coffee Table Art Book  
11" x 11"

(hardcover with dust jacket and signed by a Fenton family member.)



5150 CK  
Vase, Atlantis  
6"



6410 CK  
Turkey Box, 5 1/2" w.



5147 CK  
Mallard, 5"



6848 CK  
Duck Box, 6 1/2" w.

*100th Anniversary Logo*



8998 XB  
Logo, 3 1/4"  
(Black Carnival)



F E N T O N

Handcrafted American Glass Artistry

The Fenton Art Glass Company, 700 Elizabeth Street, Williamstown, WV 26187  
304-375-6122, FAX 304-375-6459, [www.fentonartglass.com](http://www.fentonartglass.com)