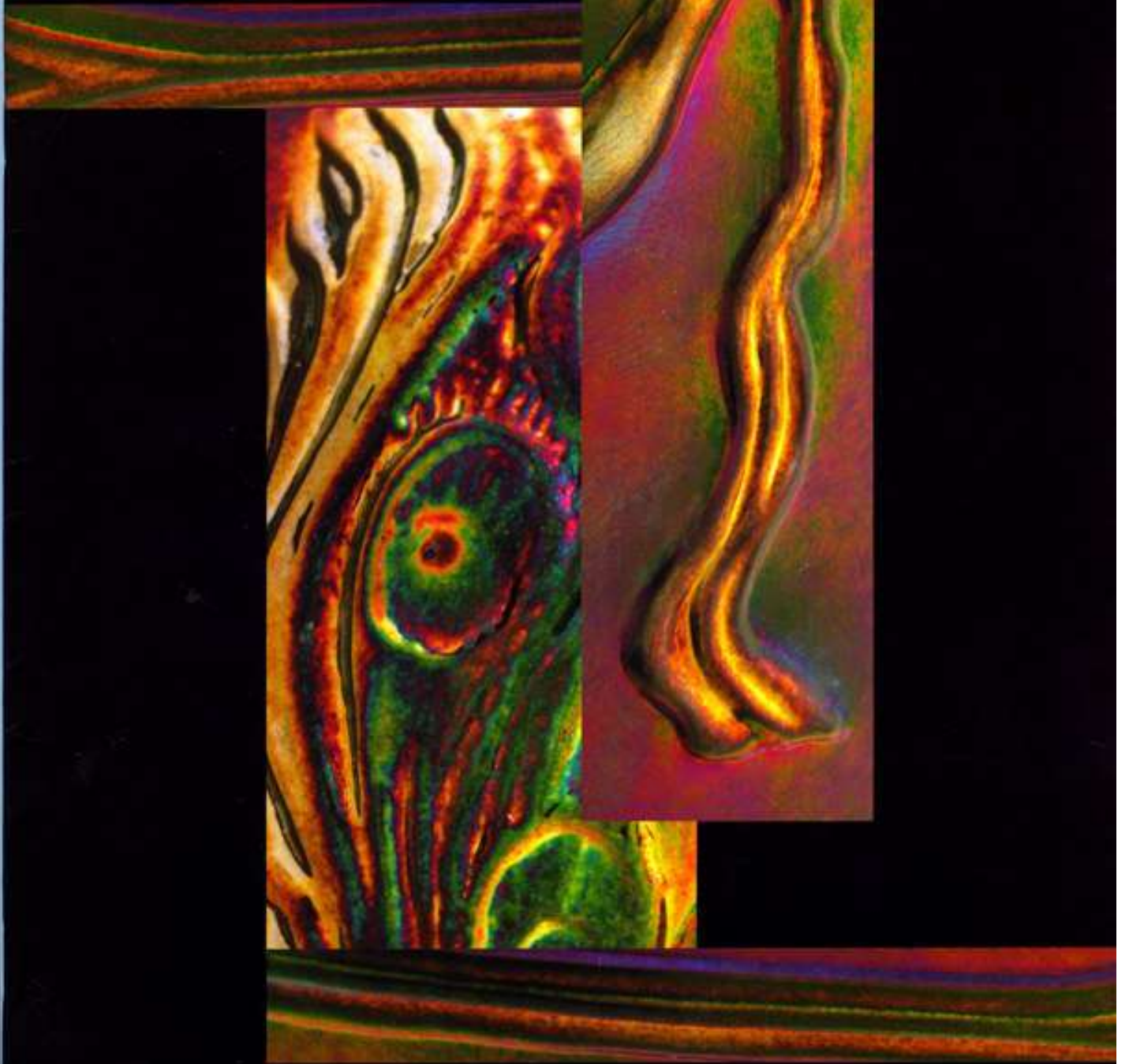


2007 CATALOG



F E N T O N<sup>®</sup>

*Handcrafted American Glass Artistry*

# A Century of Manufacturing Excellence

For nearly two centuries, the Ohio Valley has been the epicenter of America's top glass manufacturers. Cities large and small on both sides of the Ohio River have been home to factories which made the crystal and colored glassware for our nation's tables.

In the 1890s, two corporate conglomerates headquartered in Pittsburgh—the National Glass Company and the United States Glass Company—owned and operated most of the glass plants which produced decorative and utilitarian glassware in distinctive colors. During the first decade of the Twentieth Century, however, several individual entrepreneurs sought to found and operate independent glassmaking organizations.

One such entrepreneur was Frank Leslie Fenton. At age 25, he and two of his brothers formed the Fenton Art Glass Company. Within a short period, they were creating and designing innovative new products, such as "Iridescent Ware," that changed the direction of much of the glass tableware industry.

From 1905 until mid-1948, Frank L. Fenton was the driving force of our firm. When he passed away, his sons—Frank M. Fenton and Wilmer C. "Bill" Fenton—took control of the company. They were a great team, and their foresight and leadership, extending nearly four decades, firmly established Fenton's position as America's foremost manufacturer of handmade colored art glass.

Today, Fenton Art Glass continues to be family-owned and managed, as members of the third- and fourth-generations hold key positions at our plant near the Ohio River in Williamstown, West Virginia. These family members share a passion for glass and, in concert with the skills of many talented employees, look forward to the challenges of glass-making in 2007 and beyond.



Front row: Shelley Fenton, Ash, Christine Fenton, Nancy Fenton, and Lynn Fenton Erb; Back row: Randy Fenton, Mike Fenton, George Fenton, Tom Fenton and Scott Fenton.

*Dear Fenton Customer,*


*On January 2, 1907, the Fenton Art Glass Company produced its first items in glass at our plant in Williamstown, West Virginia. My grandfather, Frank L. Fenton, and my great uncles John Fenton and Charles Fenton were then in charge of various aspects of the business. They were ably assisted by our first factory manager, Jacob Rosenthal, who had helped recruit a workforce of experienced, skilled glassworkers.*

*The talents and dedication of all of these persons marked the start of the traditions of excellence that are now so firmly associated with Fenton glass. As we developed our new products for 2007, all of us at Fenton Art Glass paused to reflect upon the efforts of those who began this enterprise as well as those who have sustained and nurtured it over the years. As always, every article of Fenton glass bespeaks our pride in the craftsmanship of the designers and skilled artisans who make these products possible.*

*Our Horizons and Studio collections for 2007 mark new directions for us, as we seek to adapt and change in keeping with emerging trends in a highly-competitive marketplace. We will continue to cherish the strong personal relationships and the appreciation for the beauty and value of our products that characterize the Fenton brand.*

*George W. Fenton*

George W. Fenton  
President

 **FENTON**  
Handcrafted American Glass Artistry

[www.fentonartglass.com](http://www.fentonartglass.com)

# Horizons

DESIGNS FOR A  
NEW GENERATION



FENTON®

Handcrafted American Glass Artistry

[www.fentonartglass.com](http://www.fentonartglass.com)

2

# Horizons

DESIGNS FOR A  
NEW GENERATION

## Asian Art on Aubergine

designed by Stacy Williams

Simple, yet elegant ... the graceful  
art of the Orient effortlessly spans  
centuries ... perfectly expressed  
today with matte gold patina  
on sanded glass.



## Streamside on Blue Burmese

designed by Frances Burton

A summer breeze stirs wispy  
wildflowers ... as they bask in warm  
sunshine over water ... pure gold  
in the glass creates the soft pink ...  
the matte finish is a delight to touch.

A. 7742 KC  
Vase, 11 1/2"  
Inscribed with  
the signature of  
George Fenton

B. 4277 WS  
Vase, 11 1/2"

## Designs for a new generation

A. 8803 40  
Vase, Triangle, 16"

B. 2994 HW  
Vase, 8 1/2"



A



B

### Ginkgo Leaves on Lotus Mist Burmese

designed by Stacy Williams

The winds of Fall stir leaves  
into swirling motion ...  
a matte finish is the perfect  
background for this expression  
of nature's beauty.

**F FENTON**  
Handcrafted American Glass Artistry  
[www.fentonartglass.com](http://www.fentonartglass.com)

### Climbing Clematis on Madras Pink

designed by Stacy Williams

Tall, slender, triangular ... the three-dimensional  
look of the decoration is created by handpainting  
on the interior ... whimsical, yet dramatic.

## Sail Away on Indigo Blue

designed by Kim Barley

Triangular, tall, slender ...  
sandcarved sailboats accented  
with handpainting slide smoothly  
on a sea of Indigo Blue.



A



B

## Opalescent Big Dots French Opalescent and Indigo Blue

Decidedly contemporary in shape ...  
moody blue tones and classic opalescent  
glass combine ... absolutely "spot on"  
for today's trends.

A: 8803 H4 - Vase,  
Triangle, 16"

B: 8199 Q1 - Vase,  
Big Dots, 10 1/2"

# Retro Glamour

Ring Pitchers:  
French Opalescent with  
Fern Green, Indigo  
Blue, or Madras Pink

Go retro and relive the 1920s,  
an Age of Elegance in glass ...  
jet black handles combine with  
bold colors ... the unmatched  
perfection of blown glass.



B



C



A

- A. 6892 Q4 - Pitcher, Indigo Blue, 9"
- B. 6892 H1 - Pitcher, Madras Pink, 9"
- C. 6892 6K - Pitcher, Fern Green, 9"

# Horizons

DESIGNS FOR A  
NEW GENERATION

6 Asian Trees  
on Burmese

designed by Robin Spindler

Graceful saplings rejoice in the  
spring sun as they bear their first fruit ...  
this simple Asian style is uplifted with  
22k gold accents.



Autumn Night  
on Black Satin

designed by Robin Spindler

The crispness of Autumn and the depth of night  
... captured forever in an entirely new decorative  
technique ... airbrushed colors are masked  
and sandcarved to reveal the background.



Red Sparkle  
Milk Glass,  
mica and  
Ruby glass

Contemporary in shape,  
with a hint of retro style ...  
flecks of mirror-like mica  
are trapped between  
layers of white and  
ruby red glass ... sure to  
make a statement.



A. 6885 BY  
Vase, 12 1/2"

B. 4558 HC  
Vase, 6 1/4"

C. 4362 6T  
Vase, 11 1/2"



Studio  
FENTON



 **FENTON**  
*Handcrafted American Glass Artistry*  
[www.fentonartglass.com](http://www.fentonartglass.com)

# Studio

FENTON

A bold new direction for Fenton Art Glass. Under the leadership of Dave Fetty, our team of talented artisans has revived hot glass decorative methods from the distant past and developed and mastered new techniques all their own. Each of these dramatic vases will be embossed with the personal stamp of Dave Fetty.

## Myriad Mist

designed by Dave Fetty

Multi-colored glass frit is trapped between layers of French Opalescent glass. Blown to shape in a special mould called a "paste mould," this vase must be carefully reheated to shape the neck and to create the milky opalescence.

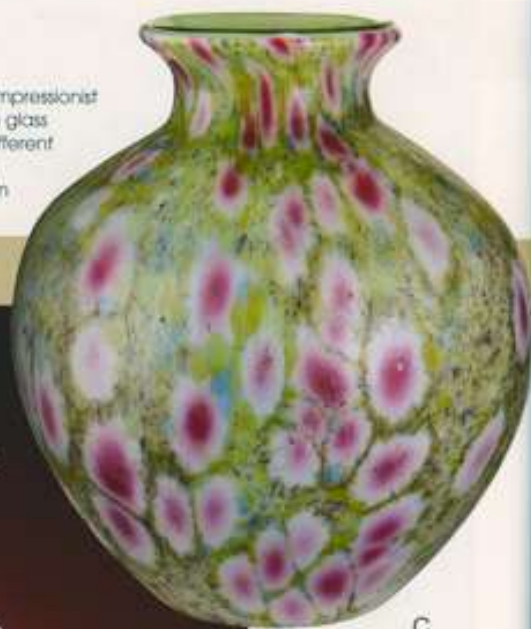


A

## Monet's Garden

designed by Dave Fetty

An innovative technique captures the French Impressionist in today's art glass. An inner layer of light green glass is covered with Milk Glass and rolled through different colors of finely crushed glass. When the vase is reheated, gold ruby glass develops into random pink "flowers" that are sure to delight.



C



B

## Mosaic Swirl

designed by Dave Fetty

An inner layer of crystal is covered with vivid ruby glass before being rolled through a meticulously prepared mixture of six different colors of crushed glass called frit. An applied thread of ruby glass is pulled and twisted before the vase is blown to its final shape.

A. 6882-46 - Vase, 8 1/2"  
Limit: 750

B. 7749-24 - Vase, 13"  
Limit: 750

C. 8964-37 - Vase, 7"  
Limit: 950

Connoisseur Collection



A

 **F E N T O N**<sup>®</sup>  
*Handcrafted American Glass Artistry*  
[www.fentonartglass.com](http://www.fentonartglass.com)

## Penguins on Ebony Favrene Temple Jar

designed by Kim Barley

One of our newest glass color treatments comes alive with whimsical Penguins created by meticulous sandcarving of the glass. The artist's design must be adapted to the curved surface of the glass, and the processes of masking and sandcarving are both time-consuming and expensive.



B

A. 4250 D9 - Lamp, 19"  
Limit: 750

B. 7707 CH - Temple Jar, 6"  
Limit: 1500

C. 6449 K2 - Vase, 13"  
Limit: 1500

D. 5339 FL - Ewer, 8 1/2"  
Limit: 1500

## Paisley Mystery Vase

designed by Frances Burton

Satin-finished Aubergine glass is the perfect canvas for Frances' adaptation of Paisley, one of today's strongest decorating trends. Traditional colors and intricate details blend beautifully with metallic touches, adding authenticity. Note the delicate flowers within the larger Paisley forms.



C

## Floral Cameo on Blue Burmese

designed by Robin Spindler

This graceful ewer with an applied ribbed handle reflects the classic proportions of the Greco-Roman tradition. Robin's highly-detailed floral motif contains tiny raised pearls of enamel to create the look of a cameo. Accents in 22k gold add the finishing touches to this piece.



D

A (Shown on previous page)

## Spring Sunshine on Burmese Lamp

designed by Stacy Williams

This gently rounded shade is made with classic Fenton Burmese glass. Pure gold in the formula creates the pink blush. Stacy's stylized floral motif sweeps over the surface and is layered with a sheer gold veil. An antique-style border completes this elegant design.

2007 Connoisseur Collection

## Effusion Lamps from La-Tee-Da!

### La-Tee-Da

Fenton Art Glass and La-Tee-Da have teamed up to present a signature set of high quality effusion lamps. La-Tee-Da is recognized for providing wonderfully aromatic oils that burn cleanly to clear the air. Two industry leaders bring you colorful unique bottles with an inviting selection of scents.

#### 0159 AS

8 Pc. La-Tee-Da Assortment

- A. P004 RE - Baby Window Optic, Rosalene, 5 1/2"
- B. P008 N8 - St. Rib, Aubergine, 7 1/2"
- C. P007 BR - Swirl, Burmese, 5 1/2"
- D. P008 RU - St. Rib, Ruby, 7 1/2"

#### 0161 AS

Six Shooter  
Fragrance Assortment



E

#### 0160 AS

8 Pc. La-Tee-Da Assortment

- E. P005 NE - Zipper, Aubergine, Iridized, 6"
- F. P006 AQ - Honeycomb, Gold, Iridized, 5 1/2"
- G. P005 AQ - Zipper, Autumn Gold, Iridized, 6"
- H. P006 RN - Honeycomb, Ruby, Iridized, 5 1/2"

#### 0162 AS

Top 12  
Fragrance Assortment (16 oz.)



F

G

H

# Fenton Carnival Glass: Yesterday and Today

In October 1907, the fledgling Fenton Art Glass Company entered the marketplace with an exciting new line of glassware. Called "Iridescent Ware," this new product featured vivid, changing metallic hues on a highly-patterned pressed glass articles. The glassware was popular from 1908 to about 1915, and Fenton's "Iridescent Ware" enjoyed great success, even being exported to many countries around the world.

By the 1950s, this glassware was being eagerly sought by American collectors. Stories abounded that the glass had been used for prizes in midway games, and the phrase "Carnival glass" was coined. Collector clubs were formed, and there has been great interest ever since. When Fenton resumed production of iridescent glass in 1970, we decided to call it "Carnival glass" and we have done so ever since.

The secret—both in 1907 and now—of Fenton Carnival glass is the special spray of metallic salts on the glass while it is very hot. Using today's technology, Fenton glass technologists have rediscovered the striking vivid effects of some of the sprays first used in 1907. We continue to make Carnival glass by hand, the "old-fashioned" way, and we never cease to marvel at the rainbow of colors and the interesting hues.

Fenton Art Glass is among the world's foremost producers of handmade colored art glass, and our Carnival glass is second to none. We regard the enthusiasm of today's collectors as a great tribute to company founder Frank L. Fenton, who first ventured into the marketplace with "Iridescent Ware" a century ago.

EXCLUSIVE DESIGNS

SUPERIOR FINISH

ORIGINATORS OF IRIDESCENT WARE

## THE FENTON ART GLASS CO.

MANUFACTURERS AND DECORATORS OF  
TABLEWARE AND NOVELTIES

WILLIAMSTOWN, W. VA.



Company letterhead, ca. 1910, proclaimed us "Originators of Iridescent Ware."

The press shop headed by Elmer Gossman (dark shirt, second from right) was likely making No. 1124 (Butterfly and Berry) pitchers and tumblers about that time.



A spray of metallic salts creates the vivid iridescence.

# Carnival



FENTON®

Handcrafted American Glass Artistry

[www.fentonartglass.com](http://www.fentonartglass.com)

## Carnival Glass 2007

To celebrate the centennial of Carnival glass, we have rediscovered and improved much of the original chemistry and techniques for iridizing glass. We salute the past and mark our place in the present with a panoply of Carnival glass colors in a wide variety of shapes—from the classic to the contemporary. These pieces are surely the heirlooms of the future.



A



D



B



C



E

- A. 6513 3Z - "Bowl, Grape & Vine, 11"  
 B. 4391 9E - Vase, Peacock, 10"  
 C. 8180 9E - Urn, Dancing Ladies, 9 1/2"  
 D. 4265 3Z - Water Set, Pineapple, 8 1/2";  
 4267 3Z - Tumblers (2), 4 1/2"  
 E. 6540 UR - Candy Box, Grape Leaf 6 1/2"

\* Stand not included



- A. 8237 KU - "Bowl, Heart/Vine, 8 1/2"
- B. 4257 KU - Vase, Hobstar, Floral, 6 1/2"
- C. 4395 4Q - Rose Bowl, Grape/Cable, 3 1/4"
- D. 4185 KU - Vase, Mayflower, 9"
- E. 4386 RC - "Bowl, Butterfly & Tulip, 12" dia.
- F. 4601 KZ - Punch Bowl Set,  
Panel Grape, 9 1/2"; Punch Cup, 2" (8 w/set)
- 4642 KZ - Punch Cup

\* Stand not included



**F** **FENTON**<sup>®</sup>  
*Masters of American Glass Artistry*  
[www.fentonartglass.com](http://www.fentonartglass.com)

0183 AS  
 9 Pc. Carnival  
 Assortment

## Designer Figurines

The design team has stepped out of the box for this year's selections! Four wonderfully individual figurines to express the personalities of our talented team.

Hawaii stirs in Robin's heart so Dobie is her boy, Frances is as gentle and elegant as Francine's floral, Stacy is whimsical and sweet like Duffy, and Stylin' Stella walks the walk and talks the talk in Kim's snappy shoes!



Designers: (l to r) Frances Burton, J.K. (Robin) Spindler, Stacy Williams, and Kim Barley. These talented designers love the challenge of creating new styles of art to pique your interest.



B



A



C



D

**0164 AS**  
8 Pz. Designer Figurines  
Assortment

A. 5087 BH - "Dobie" Dolphin,  
4" (Robin Spindler) Limit: 2500

B. 5226 BF - "Francine" Fox, 5"  
(Frances Burton) Limit: 2500

C. 5056 BL - "Duffy" Dinosaur,  
3 1/2" (Stacy Williams) Limit: 2500

D. 5148 BU - "Stylin' Stella" Mouse,  
3" (Kim Barley) Limit: 2500

**FENTON**  
Handcrafted American Glass Artistry  
[www.fentonartglass.com](http://www.fentonartglass.com)

## Four Seasons Mary Gregory Pitchers

Our quartet of talented decorating designers have done it again! Pitchers for all seasons! Four outstanding examples of a contemporary collector's classic—the delightful details of Mary Gregory-style handpainting on vivid Fenton glass colors. The mould for this pitcher originated at the Fostoria Glass Co. in Moundville, West Virginia, about 70 years ago, and this is the first time we have used it since it was recently acquired from the Indiana Glass Co.

0165 AS  
4 Pc. Four Seasons Assortment



A

- A. 8164 G6 - "First Recital"  
Spring Pitcher, Emerald Green, 4 1/4"  
(Designed by Kim Barley)
- B. 8164 D5 - "Fore!" Summer Pitcher,  
Aubergine, 4 1/4"  
(Designed by Robin Spindler)
- C. 8164 CU - "Helping Daddy"  
Fall Pitcher, Ruby, 4 1/4"  
(Designed by Frances Burton)
- D. 8164 EB - "New Friend"  
Winter Pitcher, Cobalt, 4 1/4"  
(Designed by Stacy Williams)



B



C



D

## Antiques of Tomorrow

During the Victorian Era, colored art glass combined with elegant metal fixtures became the height of fashion. Working with importers, Fenton has commissioned the creation of intricately-designed fixtures reminiscent of Pairpoint silver. Note the careful attention to piercing, open work, and even the most minute details on the handles. These pieces are truly the "Antiques of Tomorrow."

### AUBERGINE

A. 7710 KF - Creamer/Sugar, Inverted Strawberry, w/stand, 9 $\frac{1}{2}$ " l.

B. 4109 K6 - Aubergine, Stretch Bowl w/stand, 13 $\frac{1}{2}$ " dia.

C. 4501 N8 - Aubergine, Opalescent Rose Bowl, w/stand, 7 $\frac{1}{2}$ " dia.

D. 5410 N8 - Aubergine, Opalescent Double Fairy Light, w/stand, 9 $\frac{1}{2}$ " l.

Stands also sold separately:

FG808 - Vanity Tray, 12 $\frac{1}{2}$ " l. (not shown)

FG809 - Bowl Stand, 13 $\frac{1}{2}$ " l.

FG810 - Cherub Stand, 9 $\frac{1}{2}$ " l.

FG811 - Rose Bowl Stand, 7 $\frac{1}{2}$ " l.



0166 AS  
8 Pc. Antiques  
Assortment



**F** FENTON<sup>®</sup>  
Handcrafted American Glass Artistry  
[www.fentonartglass.com](http://www.fentonartglass.com)



F



H



G

**RUBY**

E. 4109 RL - Ruby Stretch Bowl  
w/stand, 13 1/2" dia.  
(shown on pg. 18)

F. 7710 RU - Creamer/Sugar,  
Inverted Strawberry,  
w/stand, 9 1/2" l.

**RUBY OPALESCENT**

G. 4501 U7 - Rose Bowl,  
Rib Optic, w/stand, 7 1/2" dia.

H. 2505 U7 - Double Fairy Light,  
Daisy Optic, w/stand, 9 1/2" l.



C

## Glass Messenger 2007 Subscriber Exclusives

Designer Frances Burton delved into the history of Persian art and soon became inspired to create the highly-detailed motifs that now grace our 2007 Subscriber Exclusives. Handcrafted in our vibrant new Indigo Blue color, this Fenton Art Glass pair is a wonder to behold. Those who subscribe to the Glass Messenger will be delighted to add these to their collections.

**EXCLUSIVES**

- A. 4370 KL - Candy Box,  
Persian Tent, 8 1/2"  
Christine Fenton Signature
- B. 5158 KL - Elephant, Persian Tent,  
3 1/2", Randy Fenton Signature

**GLASS MESSENGER MATERIALS**

C. FG170 - Glass Messenger display  
(includes one current issue, 15  
recent issue copies, and one pack  
of FG208 Rack Card (20 cards))

D. FG086 - Annual Subscription  
(Four issues + FREE binder with  
initial order)

E. FG119 - Postcards (Pack of 100)



D



E

Subscriber Exclusives limited  
to sales through November 30, 2007



A

B

## Vision on Aubergine



**F E N T O N**

Handcrafted American Glass Artistry

[www.fentonartglass.com](http://www.fentonartglass.com)

# The Jewel-like Beauty of Aubergine

## Vision on Aubergine

Layers of sheer color create the complex shading in Stacy Williams' "Vision" motif on our regal Aubergine glass. The fluid leaves and a pink Kousa pod are perfect complements to the elegant color of the glass.

- A. 4302 JN - Lamp, Dome, 15"
- B. 8155 JN - Vase, Square, 7 1/4"
- C. 5158 JN - Elephant, 3 1/2"
- D. 3470 JN - Candy Box, Colonial, 5 1/2"
- E. 5215 JN - Squirrel, 2 1/2"
- F. 6529 K6 - Vase, Colony, Swung, 10"-12"
- G. 8143 JN - Pitcher, 7"

**0167 AS**  
9 Pc. Vision on Aubergine Assortment



B



C



A



F



E

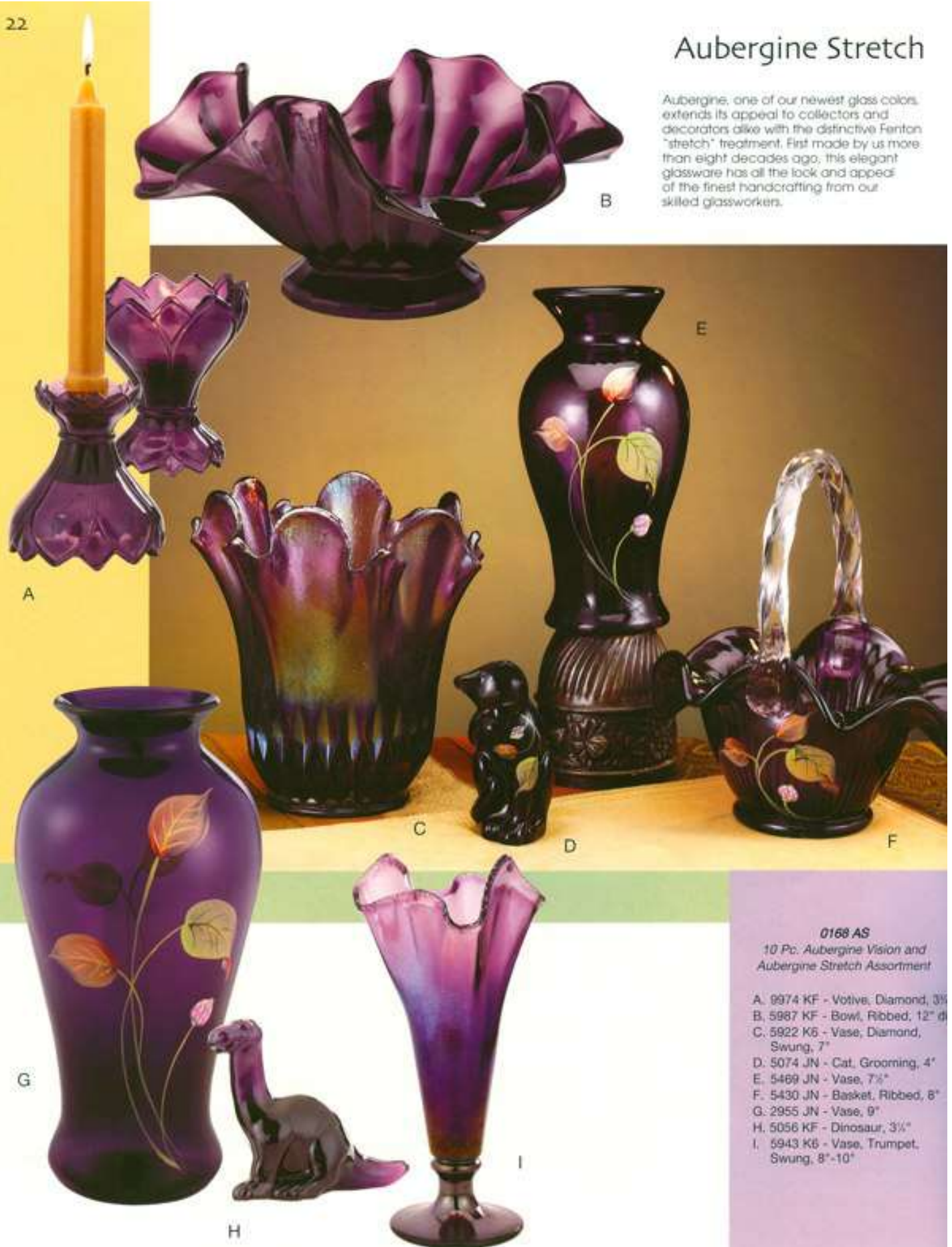


G

D

## Aubergine Stretch

Aubergine, one of our newest glass colors, extends its appeal to collectors and decorators alike with the distinctive Fenton "stretch" treatment. First made by us more than eight decades ago, this elegant glassware has all the look and appeal of the finest handcrafting from our skilled glassworkers.



### 0168 AS

10 Pc. Aubergine Vision and  
Aubergine Stretch Assortment

- A. 9974 KF - Votive, Diamond, 3 1/2"
- B. 5987 KF - Bowl, Ribbed, 12" d
- C. 5922 K6 - Vase, Diamond, Swung, 7"
- D. 5074 JN - Cat, Grooming, 4"
- E. 5469 JN - Vase, 7 1/2"
- F. 5430 JN - Basket, Ribbed, 8"
- G. 2955 JN - Vase, 9"
- H. 5056 KF - Dinosaur, 3 1/2"
- I. 5943 K6 - Vase, Trumpet, Swung, 8"-10"



0169 AS  
7 Pc. Autumn Gold  
Assortment

## Autumn Gold

New selections, including a delightful Dinosaur figurine, in this popular color are sure to capture the hearts of Fenton collectors as well as those who decorate with our glass. Stacy Williams' "Vision" motif transcends the seasons with its versatility and rich beauty.

- A. 4244 CW - Lamp, Petal, 19"
- B. 8155 CW - Vase, Square, 7 1/2", **Scott Fenton Signature**
- C. 5056 AM - Dinosaur, 3 1/4"
- D. 5987 A2 - Bowl, Ribbed, 12" dia.
- E. 4366 AM - Pitcher, 10"
- F. 3470 CW - Candy Box, Colonial, 5 1/2"
- G. 4338 AM - Basket, Dot-Rib, 7"



A



B



C



D

E

F

G



FENTON®

Handcrafted American Glass Artistry

[www.fentonartglass.com](http://www.fentonartglass.com)

## Golden Pods on Red Stretch

Inspired by the look of flowers from the Art Nouveau period, Kim Barley created this simple, yet exciting and elegant handpainted floral motif. Sweeping strokes and sheer colors reflect the artistry of Fenton's talented decorators.

### Red Stretch

All the fire of Fenton's furnaces is captured in this vivid red glass, reminiscent of our initial production in the 1920s. After being iridized with a spray of metallic salts, the glass is brought to its final shape. This process creates the "stretch" look so popular with collectors and decorators.

A



D



B



C



E



F



G

### 0170 AS 7 Pc. Red Stretch Assortment

- A. 8155 AF - Vase, Square, 7 1/2"
- B. 8155 RL - Vase, Square, 7 1/2"
- C. 5363 AF - Songbird, 3 1/4"
- D. 4329 RL - Bowl, Footed, 8 1/2" dia.
- E. 4179 UR - Vase, Heritage, 5 1/2"
- F. 6529 RL - Vase,  
Colony, Swung, 10"-12"
- G. 4198 AF - Basket, 7 1/2"  
Lynn Fenton Signature

**FENTON**  
 Handcrafted American Glass Artistry  
[www.fentonartglass.com](http://www.fentonartglass.com)

## Ruby Opalescent

A recent addition to our palette of glass colors, this new hue is REALLY RED! Special ingredients in the glass batch are needed to make opalescent glass. During the production process, the molten glass must be briefly chilled and then reheated in order to create the opalescent effect. These two lamps are triumphs of the glassmaker's art.

At Fenton, we continue to make our glass the "old fashioned" way, by hand, using tools and techniques that are essentially unchanged from those of a century ago.



A



B

A. 3304 U7 - Lamp,  
 Gone with the Wind,  
 Hobnail, 23"

B. 6797 U7 - Lamp,  
 Student, Spiral, 18"

Nowhere else in America can one find the range of glassmaking skills that are used daily at Fenton Art Glass.

Working with molten glass at nearly 2000° F, these talented artisans work in teams to produce pressed and blown glassware in a wide range of shapes and colors.

Generations of Americans have welcomed Fenton glass into their homes or have presented Fenton products as gifts.

Upholding the traditions of one of America's oldest industries, Fenton glassworkers take great pride in their craftsmanship. They make glass the "old fashioned" way, by hand, using tools and techniques that have seen little change since Fenton Art Glass produced its first items in 1907.



Studio Artist Blocking  
prior to Blowing Glass

Decorator



## The Artistry of Fenton



Ringer



Handler



Finisher



Indigo Blue



 **FENTON**  
Handcrafted American Glass Artistry  
[www.fentonartglass.com](http://www.fentonartglass.com)

A



## Indigo Blue

A timely color with global appeal, this deep, natural blue can be seen worldwide in beautifully handmade fabrics. Translated into lustrous Fenton glass, Indigo Blue imparts a lively personality.



**0630 AS**  
7 Pc. Cherry Blossoms  
on Indigo Blue  
Assortment

- A. 4244 4B - Lamp, 19"  
(Shown on previous page)
- B. 8155 4B - Vase, Square, 7 1/4"
- C. 4290 4B - Candy Box, 6"
- D. 2777 4B - Basket, 8"
- E. 4558 4B - Vase, 6 1/2"
- F. 5363 ZW - Songbird, 3 1/2"
- G. 5983 4B - Vase, Trumpet, 7"
- H. 1995 ZW - Slipper, 6" L
- I. 1889 4B - Vase, 13"
- J. 5987 ZW - Bowl, Ribbed, 12" dia.
- K. 4264 4B - Pitcher, Paneled, 5 1/2"



**FENTON**

Handcrafted American Glass Artistry

[www.fentonartglass.com](http://www.fentonartglass.com)



## Cherry Blossoms on Indigo Blue

Nothing signals the arrival of Spring more than the sweet scent of cherry blossoms. Designed by Kim Bailey, this fresh handpainted pattern reflects the simplicity of Asian style.

## Underwater Dream on Aquamarine Stretch

A special piece from designer Frances Burton captures the mystery and majesty of the ocean's depths.

- A. 5087 ZW - Dolphin, 4"
- B. 4558 3U - Vase, 6 1/4"
- C. 4353 N2 - Vase, Swung, 11"-13"
- D. 1699 3U - Vase, 13"
- E. 4290 3U - Candy Box, 6"
- F. 5983 3U - Vase, Trumpet, 7"
- G. 2777 3U - Basket, 8"
- H. 8155 3U - Vase, Square, 7 1/2"
- I. 4264 3U - Pitcher, Paneled, 5 1/4"

### 0631 AS

7 Pc. Tranquil Sea on Indigo Blue Assortment

## Tranquil Sea on Indigo Blue

Kim Bailey's fondness for all things aquatic is well-expressed in her fanciful depiction of a school of fish in the depths of the sea. Blue and gold tones blend beautifully, and "bubbles" lend a whimsical touch.



# Madras Pink



A



FENTON®

Handcrafted American Glass Artistry

[www.fentonartglass.com](http://www.fentonartglass.com)



Robin Spindler's intricate handpainted design uses layers of sheer color and a special sponge treatment to create just the right burnished effect.



## Meadow Berry on Madras Pink

**0629 AS**  
5 Pc. Meadow Berry on  
Madras Pink Assortment



**0627 AS**  
10 Pc. Madras Pink Assortment

- A. 8155 P6 - Vase, Square, 7 1/2" (Shown on previous page)
- B. 4320 PJ - Candy Box, Rib, 4"
- C. 8656 PJ - Vase, Daffodil, 7 1/2"
- D. 9295 PJ - Slipper, 6" l.
- E. 5086 PJ - Hummingbird, 4 1/2"
- F. 5074 P6 - Cat, Grooming, 4"
- G. 4290 P6 - Candy Box, Footed, 6"
- H. 4353 PJ - Vase, Swung, 11"-13"
- I. 6839 P6 - Basket, Panel, 10 1/2"
- J. 4329 PJ - Bowl, Footed, 8 1/2"
- K. 5987 PJ - Bowl, Ribbed, 12" dia.
- L. 4366 PJ - Pitcher, 10"
- M. 4264 P6 - Pitcher, Panel, 5 1/2"



## Figurines and Impulse



FENTON®

Handcrafted American Glass Artistry

[www.fentonartglass.com](http://www.fentonartglass.com)

These six fun and funky figurines are "retro." A blast from the past! Those bright pink and green colors in Kim Barley's handpainted decoration will have Fenton collectors feelin' groovy!

- A. 5084 5W - Rooster, 3 1/2"
- B. 5021 8A - Pig, 4"
- C. 5163 5C - Bird, 4" L
- D. 5142 5D - Raccoon, 3 1/2"
- E. 5162 5L - Bunny, 3 1/2"
- F. 5063 5M - Hippo, 3"

**0634 AS**

18 Pc. Flower Power Assortment

## Flower Power

Head for fun in the sun with the new Fenton Beach Babies! These whimsical handpainted animal figurines feature designer Kim Barley's emphasis on all the fun details. Check out those polka-dot bikinis, the sandals, the painted toenails, and those wonderfully expressive eyes... and sunglasses, of course! Get a Beach Baby for your honey! Each assortment of Beach Babies comes with fifteen colorful "towels" (printed on card stock) to aid retailers in their displays.



## Beach Babies

- A. 5220 VT - Pig, 2 1/2"
- B. 5063 VP - Hippo, 3"
- C. 5148 YC - Mouse, 3"
- D. 5233 VL - Bear, Reclining, 3 1/2"
- E. 5151 VC - Bear, 3 1/2"
- FG516 - Beach Towels (15pk.)

**0635 AS**

16 Pc. Beach Babies Assortment



## Natural Animals

By popular demand, we've revived a Fenton concept from the past and taken it one step further. Each Natural Animal figurine is meticulously handpainted by a Fenton artist and has the added attraction of a Swarovski gemstone. So, they're all dressed up and ready to go!

- A. 5363 E1 - Songbird, 3 1/4"
- B. 5274 C6 - Frog, 2 1/4"
- C. 5136 FH - Elephant, 3 1/4"
- D. 5074 AZ - Cat, Grooming, 4"
- E. 5066 PU - Hummingbird, 4 1/4"

0625 AS  
10 Pc. Natural Animals Assortment



## Fenton Foals

Several Fentons fell hard for sculptor Suzi Whitaker's new figurine mould, so each of these adorable youngsters bears the signature of a Fenton family member. As you can see, each Fenton Foal sports its own color and a distinctive handpainted decoration as well.

0636 AS  
12 Pc. Fenton Foals Assortment

- A. 5057 DU - Gold, 4" (Nancy)
- B. 5057 DJ - Black, 4" (George)
- C. 5057 DP - F. Green, 4" (Shelley)
- D. 5057 DW - Aubergine, 4" (Mike)
- E. 5057 DG - Madras Pink, 4" (Lynn)
- F. 5057 DQ - Indigo Blue, 4" (Scott)



## Angels

35

Whether you need a guardian angel for a special boy or girl or a keepsake gift for a special friend, a Fenton Angel is the perfect choice. These Angels will be treasured forever by those who receive them.

- A. 5034 FJ - Angel, Mini, 5" (Pink)
- B. 5034 FW - Angel, Mini, 5" (Fern Green)
- C. 5014 QR - Angel, Boy, 6 1/2"
- D. 5014 QQ - Angel, Girl, 6 1/2"



## Exotic Butterflies

Fenton fans will be all aflutter over this bevy of beautiful butterflies. Designed by Kim Bailey, each is decorated with rich, sheer metallic gold paint and a sprinkle of glitter to add to their character.

**0632 AS**  
10 Pc. Exotic Butterflies Assortment

- A. 5296 MV - Ruby, 3"
- B. 5296 AB - Indigo Blue, 3"
- C. 5296 Q7 - Gold, 3"
- D. 5296 H9 - Black, 3"
- E. 5296 ND - Fern Green, 3"



## Treasure Boxes

Store an assortment of life's special treasures—precious mementos and cherished memories—in a handcrafted functional Treasure Box.

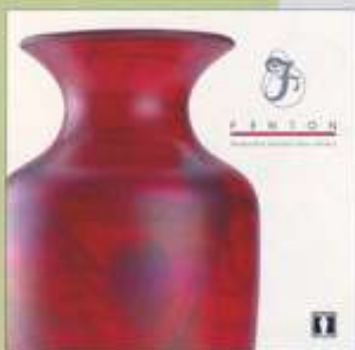
**0633 AS**  
6 Pc. Treasure Box Assortment

- A. 5033 JRI - Elephant, 4"
- B. 5061 JQ - Cat, 4 1/2"
- C. 9486 ZL - Templebells, 5" dia.
- D. 6606 JT - Ribbed Heart, 4" w.
- E. 5786 LB - Hummingbird, 4" w.
- F. 6877 ZW - Art Nouveau, 4" dia.



## Coffee Table Art Book

FENTON: Handcrafted American Glass Artistry  
 Fenton glass as you've never seen it! Breathtaking full-color images of the finest examples of glass craftsmanship, artfully presented with all-new commentary. Our 176-page hardback book contains splendid color photos of the 100 "very best" Fenton products from our earlier days to the present. The signature of a Fenton family member is in each book.



A. FG973  
 11" x 11" Coffee Table Art Book  
 (hardcover with dust jacket)

## Glass Messenger

Fenton's Quarterly Newsletter



B. FG170  
 Glass Messenger  
 Point of Purchase Display  
 (Includes: 1 current issue,  
 1 pack of FG206, and  
 15 recent issue copies)

See page 19 for Glass Messenger details

## Videos and DVDs



C. FG141  
 Consumer,  
 VHS (22 min.)

FG146  
 Continuous Loop  
 VHS (2 hr.)

D. FG142  
 Consumer,  
 DVD (22 min.)

Experience Fenton  
 Tour of the  
 Fenton Factory



E. FG209  
 The Joy of  
 Collecting Fenton  
 Glass VHS  
 (15 minutes)

## History Books



F. 9908  
 Fenton Glass  
 First 25 Years (PB)

G. 9982  
 Fenton Glass  
 Second 25 Years  
 (PB)

H. 9956  
 Fenton Glass  
 Third 25 Years (PB)



I. FG947 (PB)  
 FG948 (HB)  
 Fenton Glass  
 Especially for QVC

J. FG100  
 Fenton Glass  
 The 1980s Decad  
 (PB)

K. FG911  
 Fenton Glass  
 The 1990s Decad  
 (PB)

L. Fenton  
 Logo T-Shirt  
 FG064 - L  
 FG065 - XL  
 FG062 - XXL



M. FG207  
 Logo Pen



N. FG031  
 Fenton Logo Bags  
 (package of 30)



N



O. 8599 E3  
 Glass Fenton Logo  
 Round, 3 1/2"

P. FG037  
 Logo Sign, Acrylic



P

## Educational Materials and Products



Q. FG960  
 2007 Catalog  
 w/Price List  
 (Retail)

R. FG085  
 General Postcard  
 (Pack of 100)



## 2007 Fenton Catalog

S. 9903  
 Basket Handler's Sign  
 (no charge)

T. 9972  
 Made in USA Sign  
 (no charge)



S

R

T

# Fenton Sales Representatives and Showrooms \*

The Fenton Art Glass Company  
700 Elizabeth Street, Williamstown, WV 26187  
304-375-6122 Fax: 304-375-6459  
www.fentonartglass.com

## EAST

### Ivystone Group

Office and Showroom:  
301 Commerce Dr.  
Exton, PA 19341  
610-524-6400  
800-327-9036  
Fax: 610-524-6429

customerservice@  
ivystonegroup.com  
and

\*Rockwood Green Plaza  
10134 Hull Street Rd., Suite C  
Midlothian, VA 23112  
804-745-0104

### C. F. Archer Associates

2976 Perse Rd.  
Lafayette, NY 13084  
Phone/Fax: 315-677-3263  
cfaa22@earthlink.net

### \*BrassSmith House

Northeast Market Center  
1000 Technology Park Dr., Rm. 408  
Billerica, MA 01821  
978-528-5741  
800-777-5743  
Fax: 978-528-5747  
kabjork@rcn.com

### J. F. Hukill, Inc.

P.O. Box 23127  
Lexington, KY 40523  
859-576-2743  
Fax: 859-263-5359

### The Weikels

P.O. Box 4125  
Greensboro, NC 27404-4125  
336-292-0170  
Fax: 336-299-7498  
weikels@att.net  
and

\*Atlanta Gift Mart  
230 Spring Street NW, Suite 1215  
Atlanta, GA 30303  
404-525-1184  
Fax: 404-525-7214

## MIDWEST

### Coyne's & Co.

**Gift Connection, U.S.A.**  
7400 Boone Ave., North  
Brooklyn Park, MN 55428  
763-425-8666  
800-336-8666  
Fax: 763-425-1653  
salesdpt@coynes.com  
and

\*Coyne's & Co.  
U.M.A.G.A. Trade Center  
Orange Suite 339  
10301 Bren Road West  
Minneapolis, MN 55343  
(Use Phone Number Shown Above)

### \*Mid America Sales and Marketing

Kansas City Merchandise Mart  
6800 West 115 St., Suites 167 and 171  
Overland Park, KS 66211  
913-491-1184, 913-345-8844  
800-341-6692  
Fax: 913-345-8496, 877-246-7375

### \*Simpson Marketing, Inc.

1524 Merchandise Mart  
Chicago, IL 60654  
312-467-6277  
800-621-5943  
Fax: 312-467-0727  
simpson-m@msn.com

## SOUTHWEST

### \*SMI Associates

2100 Stemmons Freeway  
Suite 1610, Dallas Trade Mart  
Dallas, TX 75207  
214-741-7424  
800-541-7429  
Fax: 214-741-7434  
smiassociates@sbcglobal.net

## NORTHWEST

### \*Dick Gibson & Associates

Pacific Market Center  
6100 4th Ave. South, Suite 553  
Seattle, WA 98108  
206-762-1404  
800-828-4608  
Fax: 888-711-5005  
dga@dickgibson.com

## WEST

### Peddlers Too

1478 35th Ave.  
San Francisco, CA 94122  
415-564-4352  
Fax: 415-682-7530  
jimpedr2@sbcglobal.net

### The Newcombs, Inc.

P.O. Box 765  
Pacific Palisades, CA 90272  
800-245-5522  
Fax: 310-454-4418  
www.thenewcombs.com  
and

### \*505 LA Mart

1933 S. Broadway  
Los Angeles, CA 90007  
Phone: 213-746-4545  
Fax: 213-746-0098

### For Ohio:

Linda Beachy, 330-343-0688

### For Western Pennsylvania:

David Battaglia, 724-543-5876

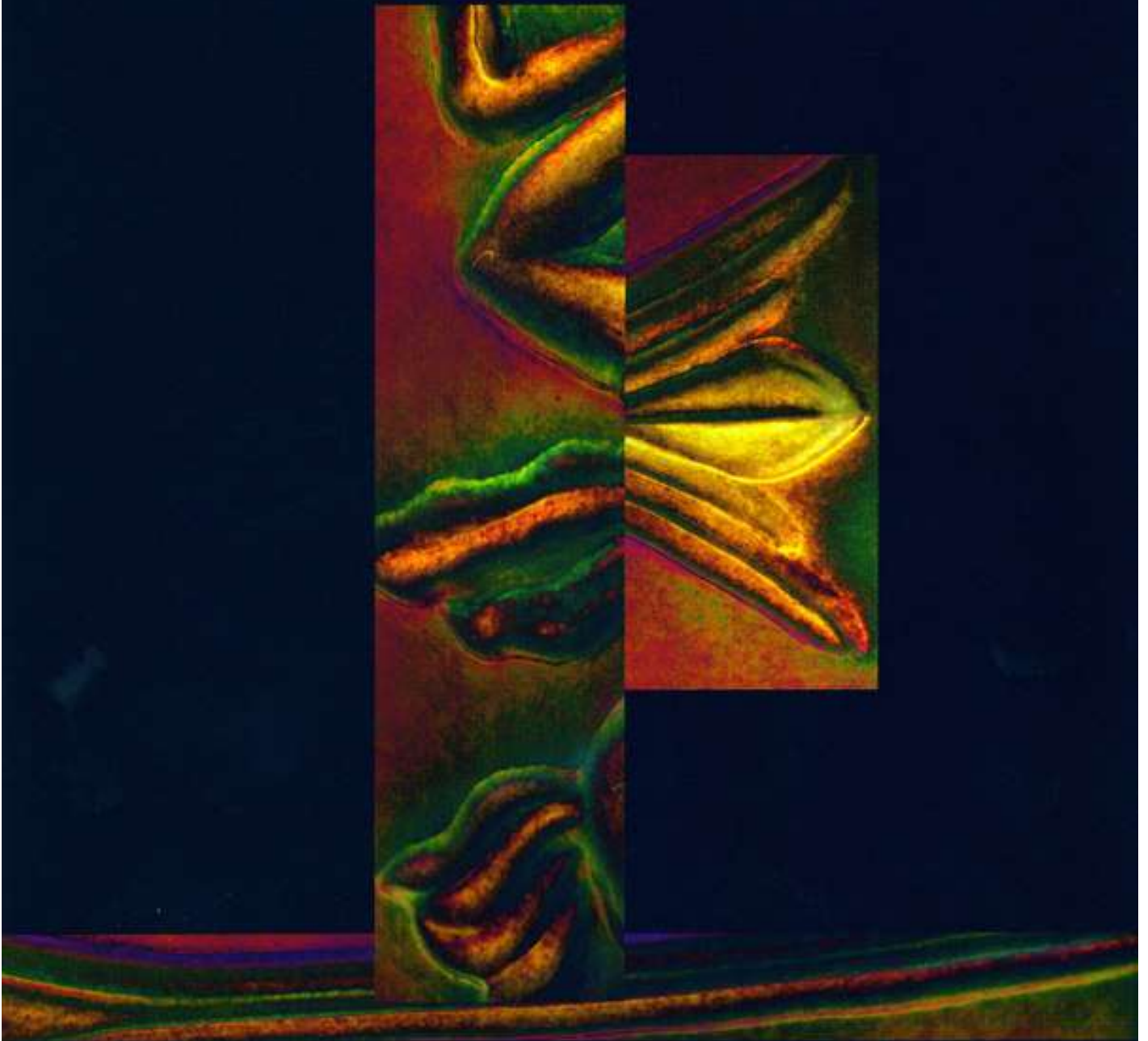
### For West Virginia:

Grace Fenton, 740-236-8272



F E N T O N®

Handcrafted American Glass Artistry



The Fenton Art Glass Company, 700 Elizabeth Street, Williamstown, WV 26187  
304-375-6122 · [www.fentonartglass.com](http://www.fentonartglass.com)

