



**Stretch Glass Produced at Vineland Flint Glass Works**  
will be the topic of our *stretch out* discussion on  
**Thursday, March 14, 2024**  
at 8 pm Eastern, 7 Central, 6 Mountain & 5 Pacific Time.  
All are welcome to join this Zoom meeting  
Come share in the discussion and show unusual stretch glass.

Even though the Discussion will be led by those who Zoom in to share their stretch glass,  
photos of the glass will be available on our website,  
[stretchglassociety.org](http://stretchglassociety.org) one week preceding the call.  
Further information is available on our email: [info@stretchglassociety.org](mailto:info@stretchglassociety.org)

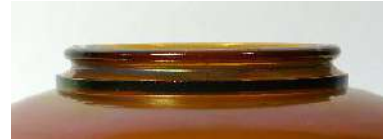
Many who have joined our discussions are thanking us  
for identifying their recent purchase.



Vineland appears to have used a limited number of molds to make their stretch glass.



4 3/8" base, flat, sharp edge, narrow collar



3 3/8" base, rounded, narrow collar



2 7/8" base, rounded, narrow collar



4 3/8" base, flat, sharp edge, very narrow collar



U.S. Glass #179 vase, 4 3/8" base, round edge, two-ring collar

Vineland Flint Glass Works  
Vineland, N. J.  
No. 15. Old Gold







amber slag





dark  
red brown

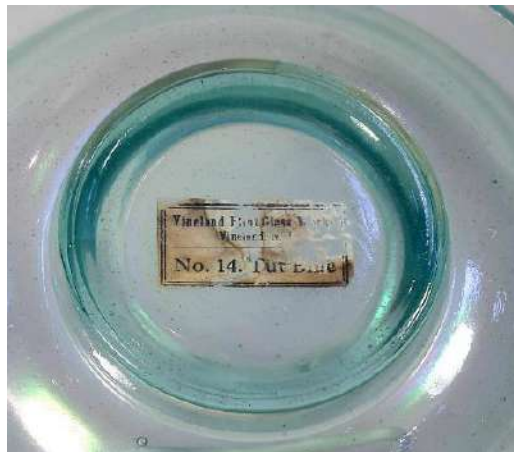


red  
brown



green  
brown

# Tut Blue Variations in Color!





blue slag





# light cobalt blue



# dark cobalt blue



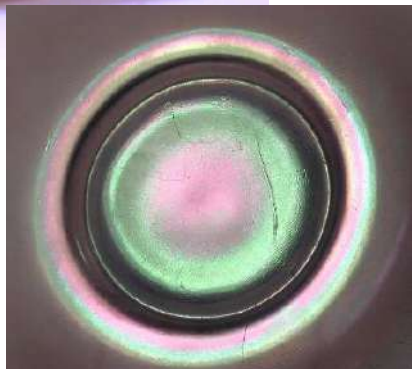




purple

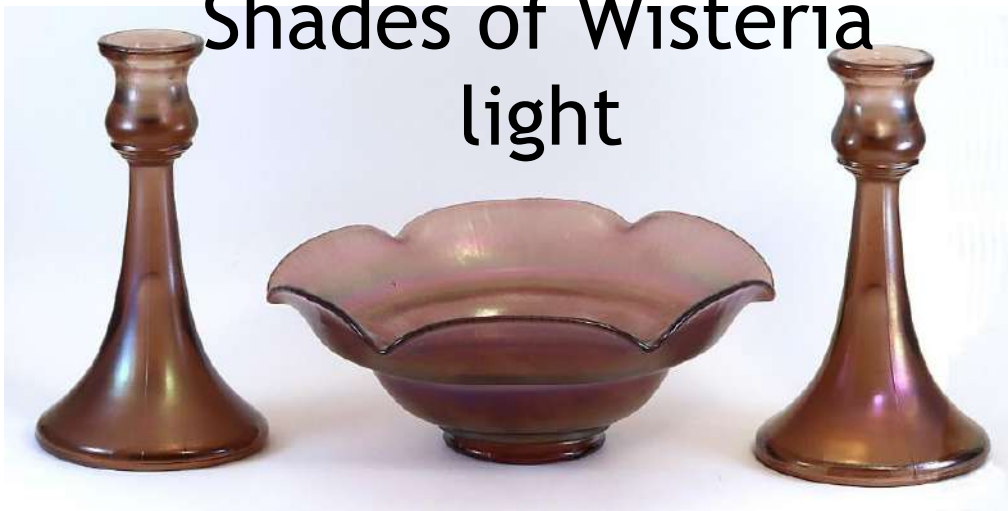


inside base



inside bowl

Shades of Wisteria  
light



medium



dark



# more wisteria







# Pearl





pale green



marigold on milk



pink?

